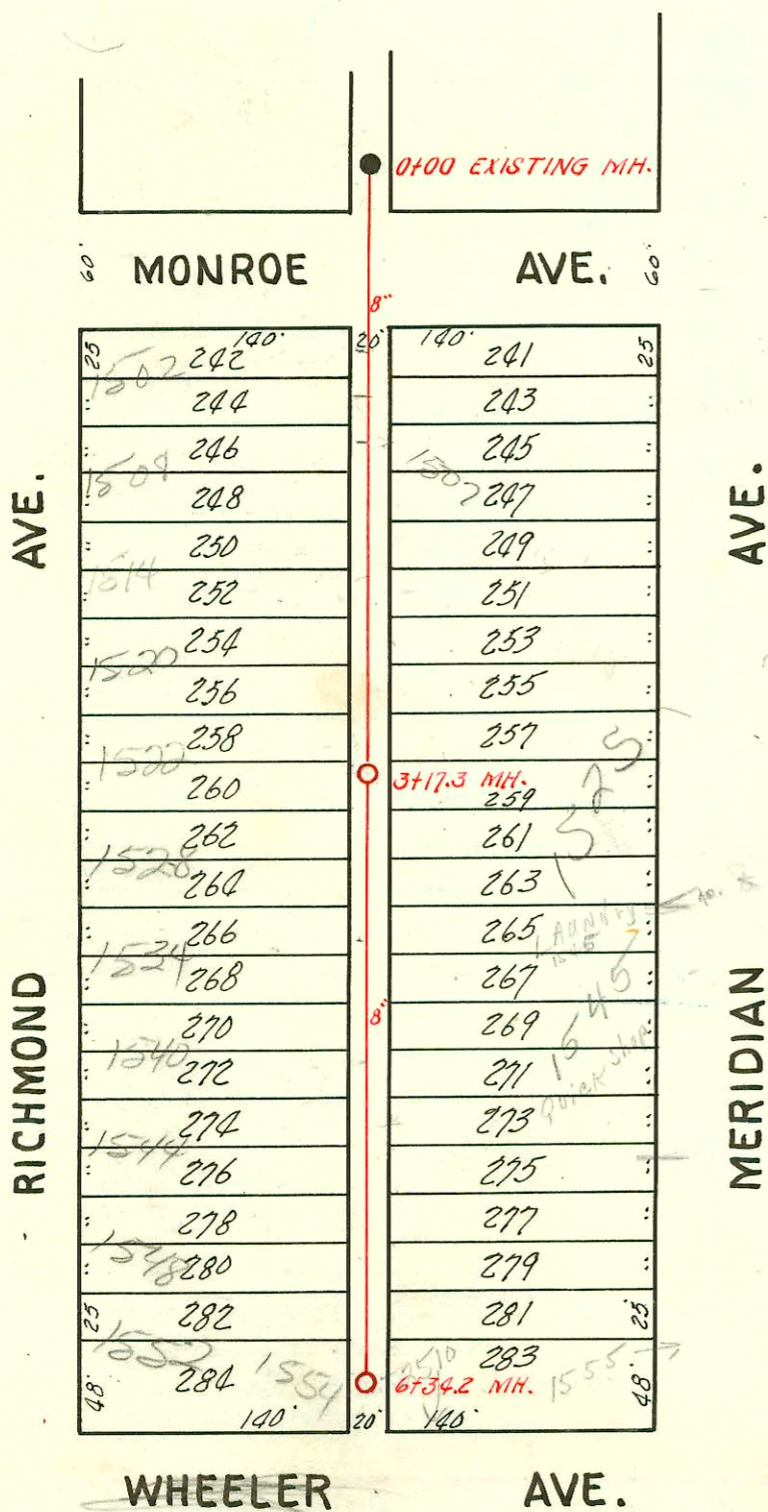


2001-00307-2/12/01-2628 S Mason Terr - RD Campbell  
 4" SCH 40 Donut, on msmt, Trap installed, ITWIN CO, 2V22  
 1 Fernco to clay @ house

**LAT. 34, S. S. N° 20**  
 W. B. CARTER — MARCH, 1953  
 BK. N° JF. 65 — PROJ. NO. C22-13  
 SCALE 1" = 100'



2002-01498-5/28/02-1534 S Richmond- Bucks Backhoe- Fernco 1' from main, W/E (old tap) 213.6' N of MH 6+34.2 (4+20.6) 1H45; 1H22, ITWIN CO  
 1 Fernco @ house - 4" 40 PVC - shallow.

**LAT. 9, SUB. B, S. S. #21**  
 W. B. CARTER — MARCH, 1953  
 BK. NO. JF. 64. — PROJ. NO. C23-3

WHEELER AVE.  
 Harry

CONSTRUCTION RECORD

SERVICE RECORD

LINE NO.

LINE NO.	STATION	ELEVATION		Depth	MANHOLE	4-INCH "Y" BRANCHES		No. of Permit		House Number		DATE OF PERMITS		
		Ground	Grade			North West	South East	North West	South East	North West	South East	North West	South East	
2.	0+0	95.8	86.40	9.4	0+00 Exist'g MH.		0+91.8		14635		2659 Classen		9-5-61	
	1+0	96.0	86.50	9.5		1+08.4 1+26.3 1+88.6	Conn. 1+26.3		#4542 #4541 #2001-06307 4774	2634 2639 2649 see next p.		3-20-53 2-12-01 4-10-53		
	2+0	96.1 96.2	86.60 86.61	8.5 9.6			2+18.5							
	3+0	94.9	86.70	8.2		2+51.3 3+08.8 +80.3	+48.3		#4528 #16869 #6693 5617	2624 2618 2610 2610			3-25-53 3-28-63 10-14-53 7-9-53 11-12-51	
	4+0	94.5 94.4	86.80 86.82	7.7 7.6		4+17.7	4" Stub W.		5140-7 3265	2602 R R			9-3-91 12-5-56	
3	0+0	95.4	87.00	8.4	0+00 Existing MH.	Conn. 0+75.5	Conn. 0+72.5		10266 #4491	2644 2640 2633			2-21-84 3-18-53	
	1+0	95.2	87.10	8.1		1+36.1	1+33.1		#4464 #4615	2640 2627 2634			2-6-53 3-25-53	
	2+0	94.5 94.3	87.20 87.24	7.3 7.1		2+01.9 2+55.4	2+52.4		#4570 #4589	2628 2622 2619			3-25-53 3-25-53	
	3+00	94.3	87.30	7.0		3+21.0 +89.4	3+18.0 +86.4		#4701 #4709 #4612	#21613 #2611 #2610			3-31-53 4-2-53 3-25-53	
	4+0	94.4	87.40	7.0		4+70.4	4+67.4 +96.7		#4766 #4702	2609 2601			3-25-53 3-31-53	
	5+0	94.7 94.7	87.50 87.50 out in	7.2 7.0		5+12.8	Y North Y South		18594 #4703 #4704	1717 R 1711 R			6-25-67 3-31-53	
	6+0	94.5	87.80	6.7		6+28.0			#49024 #4726 #5931 4576	2604 R Rose Man 1705 R			10/05/67 4-6-53 5-23-53	
		94.3	87.85	6.5		6+49.2								
		0+0	94.2	87.50	6.7	0+00 Existing MH.	Conn. 0+04.2	0+07.2		#203	2049 Rose Man			3-8-54
		1+0	94.5	87.60	6.9		0+76.6 1+55.1 +94.3			#4764 #4763	2639 2633 Rose Man			4-8-53 4-8-53
	2+0	94.4 94.2	87.70 87.80	6.7 6.4		2+54.6 4" Stub NE.			#4762 #4801	2627 Rose Man			4-8-53 4-18-53	
						4" Wyes Y West Y East								
	0+0	108.8	102.55	6.3	0+00 Existing MH.	0+96.5	0+93.5		#4759 #204	1522 R Richmond			5-11-53 2-24-54	
	1+0	107.8	102.65	5.2		1+20.9 1+45.8 +66.5	1+17.9 +42.8		#4720 #4359 285	1346 R Richmond 1507 Meridian			4-12-55 4-2-55 2-21-54	
	2+0	107.9	102.75	5.2		1+93.2 2+46.9 2+70.6 2+94.7	+90.2 +43.9 +67.6		#2365 #497 #6376	1514 R Richmond 1519 R Meridian 1522 R Richmond			10-27-54 3-21-56 7-14-54 9-9-53	
	3+0	107.5 107.4	102.85 102.87	4.7 4.5		3+13.1 3+45.7 3+70.1 +94.0 4+20.1	3+10.1 3+42.7 +67.1 +91.0		#1502 #7287 #2002-51498 #201	1528 R Richmond 1534 R Richmond			10-14-80 12-29-53 5-28-02 2-24-54	
	4+0	107.3	102.95	4.3		4+43.8 4+70.8 4+97.2	+40.8 +67.8 +94.2		#202 #10144 #3389	1540 R Richmond 1545 R Meridian			2-24-54 8-21-68 6-2-67	
	5+0	106.8	103.05	3.7		5+19.2 5+43.5 5+70.8 5+94.3	5+16.2 +40.5 +67.8 +91.3		#17227 #6856 #17483	1548 R Richmond			7-1-93 11-2-53	
	6+0	106.6 106.5	103.15 103.19	3.4 3.3		6+15.1 6+12.1			#5522	1552 R Richmond			6-15-53	

#4753 - at Nanning 11/20/81 (12' 50" Prop Line)  
 #4765 - Dip - 2625 Classen - 4-8-53 - Joe McDonald  
 #203 - Dip at 5+09.2 - 1546 S. Richmond - 2-24-54 - Reynolds Pkly. Co., Inc.  
 #B50 - Top - 2510 W. Harry - 9-25-63 - Bradford Pkly. - (6+29.2)  
 #B1695 - Top - 2640 S. Hydraulic - 7-24-64 - A. S. Pkly. - (17 61.8)  
 Re. = 5108-8250 spur for pit 7-24-64 - A. S. Pkly. 2640 S. Hydraulic