

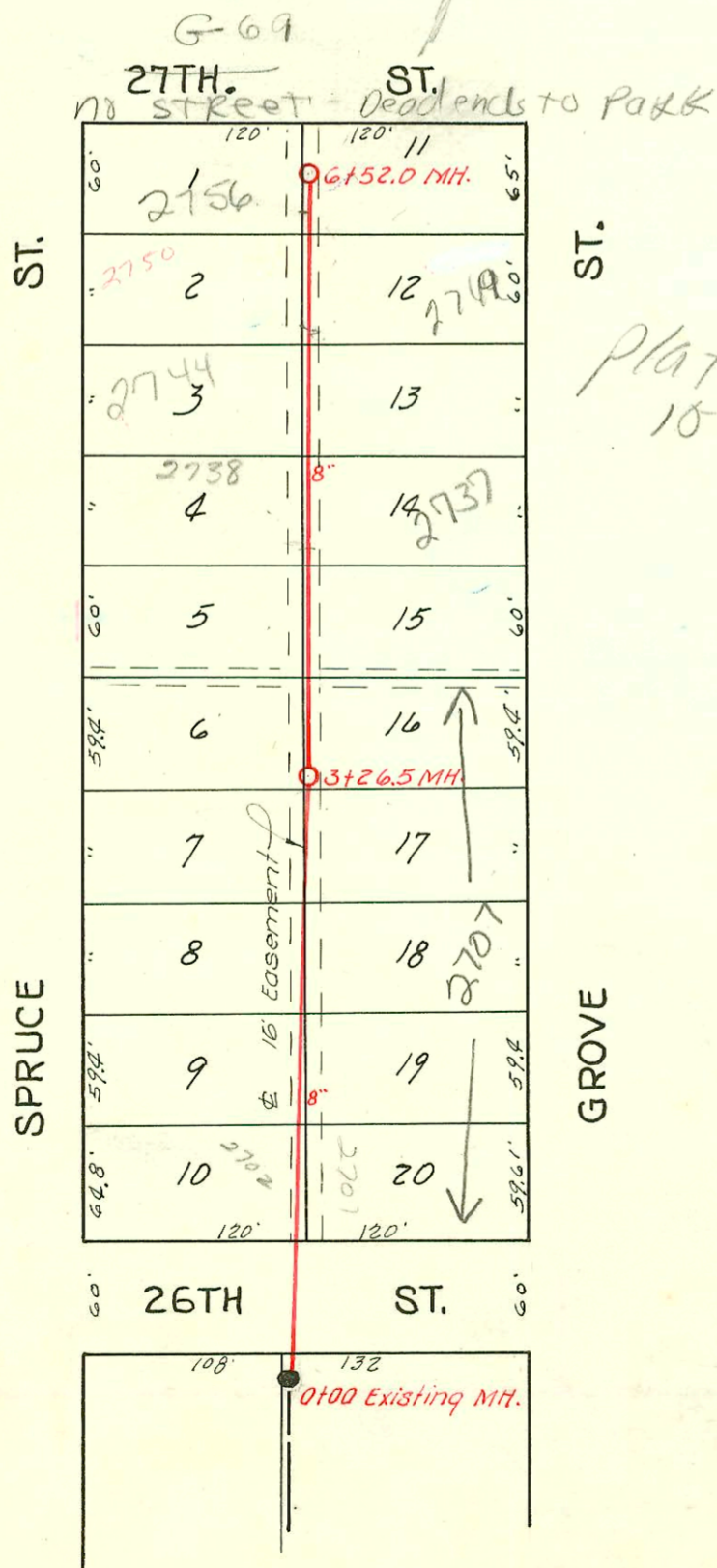
LAT. 32, D.C.S.# 2, S.S.# 12

W. B. CARTER

JULY 3, 1953

Book Jt. 70,

PROJ. NO. C23-23



Plat 1031

2002-03453-1212012-2707 N Grove - Glover Ent - 4" PVC 1/22, tied to claytile
 2002-00095-1/10/02-2756 N Spruce - Wichita EXC - 24' of MH 6+52 (6+28) Replaced last 6' on low end, 4" 90 SKH 40 PVC, 2V22, Predco Saddle

LAT. 32, DIST. T, S. S.# 12

W. B. CARTER

JULY 3, 1953

Book J.H.K. Misc.

PROJ. NO. C23-9

CONSTRUCTION RECORD

SERVICE RECORD

Line #3

Line #4

Lat. 32, D.C.S. 2, S.S. #12

Lat. 32, Dist. T., S.S. #12

Line #1

Line #2

BUILDER'S INC. PRIVATE SANITARY SEWER

NOV. 2, 1954

BK. J. 64, 4-25

STATION	ELEVATION		Depth	MANHOLE	4-INCH "Y" BRANCHES		No. of Permit		House Number		DATE OF PERMITS	
	Ground	Grade			North West	South East	North West	South East	North West	South East	North West	South East
0+0	96.7	90.72	6.0	0+00 = 9+98 in Line 1 End of 6" lead at W.L. Minn. 2-0+81.0		4" SCH 40 CO 0+42.8		2001-02715 #5620	2314 S. R. Manness		10-29-01 6-22-53	
1+0	96.9	90.82	6.1	End of 6" lead at W.L. Minn. 2-1+25.0		0+95.4	#939	#5619	2308 S. Manness		3-18-54 5-13-54 6-22-53	
	97.1	90.86	6.2			1+32.0						
0+0	98.5	91.25 91.33 out 91.53 in	7.2 7.0	0+00 = 14+24.7 in line 1	Y NORTH	Y SOUTH		#6966	1916 S. Lawrence		11-27-55	
1+0	98.4	91.55	6.8	0+81.5		0+91.5						
						1+30.4						
2+0	98.3	91.65	6.7			1+84.6						
	97.8	91.72	6.1	2+68.0		2+33.4						
						2+30.4						
						(4" stub W.)						
0+0	141.6	131.30	10.3	0+00 Exist'g MH.								
1+0	143.7	131.40	12.3									
2+0	143.2	131.50	11.7									
	144.6	131.54	13.1	2+41.5	6" PVC 6" stub West		2003-00502 2987		1908 R. see pg Lawrence 130	bottom 2-24-53 2-22-57		
0+0	150.7	136.00	14.7	0+00 Exist'g MH.	Y West	Y East						
1+0	150.1	136.30	13.8			0+99.4						
						1+02.4						
						1+61.4		#5740	2702 S. Lawrence		7-8-53	
2+0	150.8	136.60	14.2			2+23.4		#5741	2708 N. Lawrence	2707 N. R. ext seen	12-20-02 2-13-56	
						2+83		#5742	2714 N. R. Lawrence		7-8-53	
3+0	150.7	136.90	13.8			2+80		#5743	2720 N. R. Lawrence		7-8-53	
						3+26.5						
						3+39		#5789	2726 N. R. Lawrence		7-13-53	
						3+93		#5788	2732 N. R. Lawrence		7-13-53	
4+0	151.1	137.20	13.9			4+48.5		#5789	2738 N. R. Lawrence	2737 N. R. Lawrence	2-27-85 8-28-53	
5+0	151.9	137.50	14.4			5+04.6		#5789	2744 N. R. Lawrence		7-13-53	
						5+68.8		#6116	2750 N. R. Lawrence	2749 N. R. Lawrence	3-4-97 8-13-53 8-28-53	
6+0	152.4	137.80	14.6			6+30.7		#6117	2756 N. R. Lawrence	2755 N. R. Lawrence	11-10-02 8-12-53	
	152.2	137.96	14.2	6+52		6+27.7		2002-00095	next pg			
					Y WEST							
0+0		135.56	8.3	0+00 Exist'g MH.								
1+0	144.6	136.56	8.0									
	145.6	137.19 out 139.31 in	8.4 6.3	1+63.0								
2+0	145.6	139.43	6.2			1+77.0		#2325	908 S. Oliver		10-22-54	
3+0	145.7	139.83	5.9			2+38.0		#2326	908 S. Oliver		10-22-54	
						3+44.0		#2327	908 S. Oliver		10-22-54	
						3+84.0		#2328	908 S. Oliver		10-22-54	
	146.9	140.19	6.7	3+90.0				#12116	902 S. Oliver		1-7-69	
0+0	144.6	138.20	6.4	0+00 = 1+63 in Line #1		0+83.0		#2330	908 S. Oliver		10-22-54	
1+0	144.9	138.60	6.3			1+94.0						
2+0	145.0	139.00	6.0			2+46						
	144.4	139.22	5.2	2+55.0								
3+0	144.1	139.40	4.7			3+15.0						
						3+91.0						
4+0	144.7	139.80	4.9			4+27.0						
						4+62.0						
						4+94.0						
	144.6	140.20	4.4	5+00								

#C-12116 Sep. 902 S. Oliver 1-13-69 Highlands Huddleston (M. H. Jap) 3+90) C.W. & G. Co.
 #5540 - Sep. - 902 S. Oliver - 6-12-53 - Richard L. Jap, Jr. #6966-1916 E. Lawrence - 12-55 -
 #5792 - Sep. - 2744 N. Lawrence - 7-13-53 - Baker P. Co.
 #6294 - Sep. - 2731 N. Oliver - 8-28-53 - Baker P. Co. (4" off main about 10' W of S. prop line)
 #6298 - Sep. - 2755 N. Oliver - 8-28-53 - Baker P. Co.
 #6296 - Sep. - 2743 N. Oliver - 8-28-53 - Baker P. Co. - Repair 6-29-59
 #2329-2331-86- Jap(?) 908 S Oliver - 10-22-54 Home P. Co.