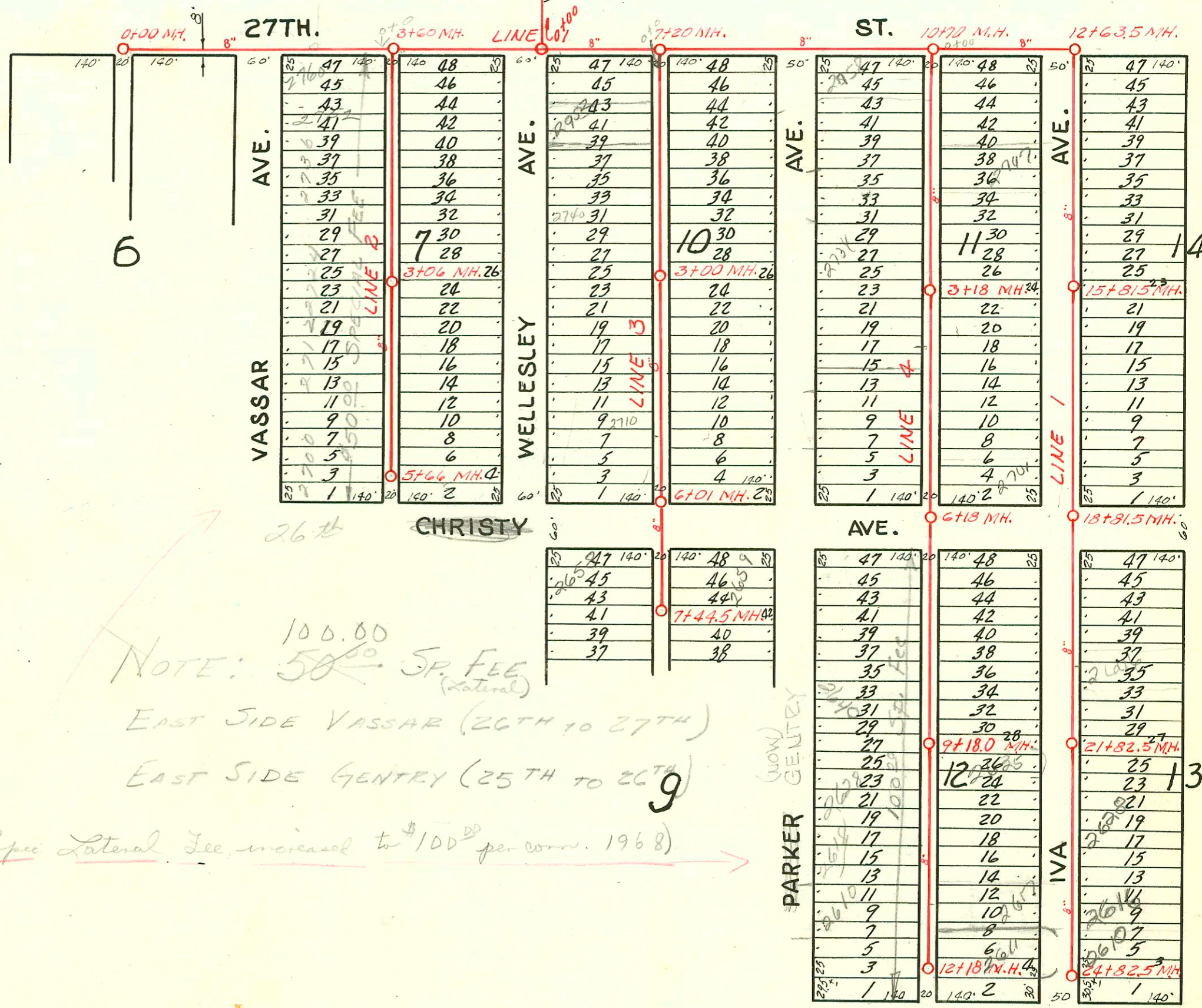


Backner School  
3530 E 27th

	GROUND	GRADE	CUT	M.H.
0+00	166.64	162.50	4.14	0+00
1+06	167.20	163.49	3.71	1+06

Caution: Grades not City Datum



NOTE: 100.00  
50<sup>00</sup> SP. FEE (lateral)  
EAST SIDE VASSAR (26TH TO 27TH)  
EAST SIDE GENTRY (25TH TO 26TH)

Spec Lateral Fee increased to \$100<sup>00</sup> per conn. 1968

- Rec # 19809 \$50.00 spec fee pd. International Paper & Long Bell Div 2628 Gentry 3-20-59
- #9749 tap - 2628 Gentry - Hensley Enterprises 3-20-59 10+08.5
- 9437 Tap 2618 Gentry Phipps 4-24-59 10+96.5
- Rec # 28149 - \$50<sup>00</sup> Special fee pd. Realty Contr. - 8-17-59 - 2760 N. Vassar  
(See plat # 11222 - 2760 N Vassar - Tap - Hensley Enterprises 8-17-59)
- Rec # 29911 - 50<sup>00</sup> spec. fee paid - Frank Weidner 9-16-59 2712 N. Vassar
- 11222 Tap 2760 N Vassar Hensley 8-27-59 2+79
- 11435 Tap 2712 N Vassar Reynolds 9-16-59 4+73
- 11774 - tap - 2650 N. Gentry - Joe McDonald - 11-2-59 spec. fee 50<sup>00</sup> paid - Rec # 31193 11-2-59
- 11775 - tap - 2634 N. Gentry - Joe McDonald - 11-2-59 spec. fee 50<sup>00</sup> paid - Rec # 31193 11-2-59
- 12025 - tap - 2600 N. Gentry - Advance Bldg. 12-2-59 (12+02)  
Rec # 32433 paid 12-2-59 spec. fee 50<sup>00</sup> 2600 N. Gentry - Advance Bldg.
- \$50.00 spec. fee - Rec # 4036 - 2610 Gentry - Jack Caldwell, Inc. 11-2-67
- Tap # C 5643 - 2610 Gentry - Al Henning - 11-7-67 (11+58)
- \* 100<sup>00</sup> Special Fee - Rec # 91955 - 2752 N. Vassar - R.O. Arnold & Son 5-27-71

SWR 2003 01802 7/9/03 3530 E 27th St S. (Backner School Bldg) R+C Cont

PART OF COLLEGE CREST ADDN.  
PRIVATE SANITARY SEWER  
Booked July 22, 1953  
DESIGNED BY K.O. TAYLOR C.E, 3-26-53

CONSTRUCTION RECORD

SERVICE RECORD

STATION	ELEVATION		Depth	MANHOLE	4-INCH "Y" BRANCHES		No. of Permit		House Number		DATE OF PERMITS	
	Ground	Grade			North West	South East	North West	South East	North West	South East	North West	South East
0+0	157.0	152.60	4.4	0+00								
1+0	157.4	153.00	4.4									
2+0	157.8	153.40	4.4									
3+0	158.0	153.80	4.2									
4+0	158.0	154.04	4.0	3+60								
5+0	158.1	154.20	3.9									
6+0	158.0	154.60	4.4									
7+0	160.5	155.00	4.5									
8+0	163.0	155.40	7.6									
9+0	163.6	155.98	8.1	7+20								
10+0	163.6	159.55	4.0									
11+0	165.8	160.71	5.1									
12+0	169.0	162.16	6.8									
13+0	176.0	163.61	12.4									
14+0	176.6	164.63	12.0	10+70								
15+0	178.0	164.75	13.2									
16+0	176.0	165.15	10.8									
17+0	174.0	165.40	8.6	12+63.5	12+98		#6553		2758			9-26-53
18+0	174.0	165.55	8.4		13+49.8		#6556		2752			9-26-53
19+0	173.0	165.95	7.0		14+06.8		#6557		2746			9-26-53
20+0	172.5	166.35	6.1		14+70		#6558		2740			9-26-53
21+0	172.0	166.67	5.3	15+81.5	15+30.2							
22+0	171.8	166.75	5.0		15+93.5		#6560		2728			9-26-53
23+0	171.0	167.15	3.8		16+51.1							
24+0	171.6	167.55	4.0		17+08.2							
25+0	172.0	167.87	4.1	18+81.5	17+68.3							
26+0	172.2	167.95	4.2		18+28.5							
27+0	173.5	168.35	5.1		19+54.5		#6565		2658			9-26-53
28+0	174.6	168.75	4.8		20+17.5		#6566		2652			9-26-53
29+0	175.2	169.07	6.1	21+82.5	20+81.3		#6567		2646			9-26-53
30+0	175.2	169.18	6.0		21+44.7		#6568		2640			9-26-53
31+0	176.0	169.78	6.2		22+08.2		#6569		2634			9-26-53
32+0	176.2	170.38	5.8		22+74.5		2603-CO062 #6570		2628 R			3-12-53 9-26-53
33+0	176.2	170.87	5.3	24+82.5	23+38		#6571		2622			9-26-53
34+0	176.2	170.87	5.3		24+03.7		#6572		2616			4-4-53
35+0	176.2	170.87	5.3		24+67		2603-CO031 #6573		2610 R			2-18-53 9-26-53
36+0	157.8	154.00	3.8	0+00=3+60 in Line 1	0+29		#4277		2759			2-28-53
37+0	159.3	155.60	3.7		0+79.2		#4278		2753			2-28-53
38+0	161.0	157.00	4.0		1+51.6		#4279		2747			2-28-53
39+0	163.2	158.40	4.8		2+12.8		#4300		2741			2-28-53
40+0	163.2	158.40	4.8		2+70.8		#4301		2735			2-28-53
41+0	163.4	159.90	4.0	3+06	3+32.4		#4302		2729			2-28-53
42+0	167.5	162.70	4.8		3+93.5 ok		#4303		2723 R			5-3-51 2-28-53
43+0	172.0	166.20	5.8		4+48.8		#4304		2719			2-28-53
44+0	174.0	168.50	6.5	5+66.0	5+10.5		#4305		2714			2-28-53
45+0	174.0	168.50	6.5		5+59.5		#4306		2701			2-28-53
46+0	162.0	155.80	6.2	0+00=7+20 in Line 1	0+36.3	0+33.3	#4307	#5853	2758	2759		2-28-53
47+0	164.0	158.13	5.9		0+102.1	0+99.1	#4308	#5854	2752	2753		12-12-46 7-21-53
48+0	165.6	160.46	5.1		1+62.8	1+59.8	#4309	#5855	2746 R	2747		2-28-53
49+0	167.9	162.80	5.1	3+00	2+20.7	2+17.7	#4310	#5856	2740	2741		2-28-53
50+0	171.2	164.00	7.2		2+84	2+81	#4311	#5857	2734 R	2735		2-28-53
51+0	172.5	165.20	7.3		3+38.0	3+35.8	#4312	#5858	2728 R	2729		2-28-53
52+0	173.0	166.40	7.6		3+95.7	3+92.7	#4313	#5859	2722 R	2723 R		2-28-53
53+0	173.5	166.80	6.7	6+01	4+56.6	4+53.6	#4314	#5860	2716 R	2717		6-25-53
54+0	173.0	166.40	7.6		5+17.3	5+14.3	#4315	#5861	2710 R	2711		2-28-53
55+0	173.5	166.80	6.7		5+75.2	5+72.2	#4316	#5862	2700 R	2701		3-27-50 2-28-53
56+0	173.0	166.40	7.6	6+01	4+91.3	4+88.3	#2000-45 #5863		2658	R. Tiedtows		1-18-00 7-21-53
57+0	173.5	166.80	6.7	L.H. 7+44.5	7+39.5	7+08	#5864	931947	2652	Gentle		7-21-53

See page 136 for line #4

Line #1

Line #2

Line #3

Tap 2642 2700 N. Vance Road 11-13-58 57.57  
 Tap 2643 2718 N. Vance Road 11-13-58 47.14  
 Tap 2644 2747 N. Vance Road 11-13-58 37.45  
 Tap 2645 2736 N. Vance Road 11-13-58 14.83  
 Tap 2646 2707 2657 Leaky Turkey 1-13-59 7+08-see above

#6561 - Tap - 2722 gwa  
 #6562 - Tap - 2716 gwa  
 #6563 - Tap - 2710 gwa  
 #6564 - Tap - 2700 gwa  
 #6565 - Tap - 2734 gwa  
 #6795 - Tap - 2609 gwa - 10-29-53 - Headygath Oly Co.  
 #6802 - Tap - 2651 gwa - 10-29-53 - Headygath Oly Co.