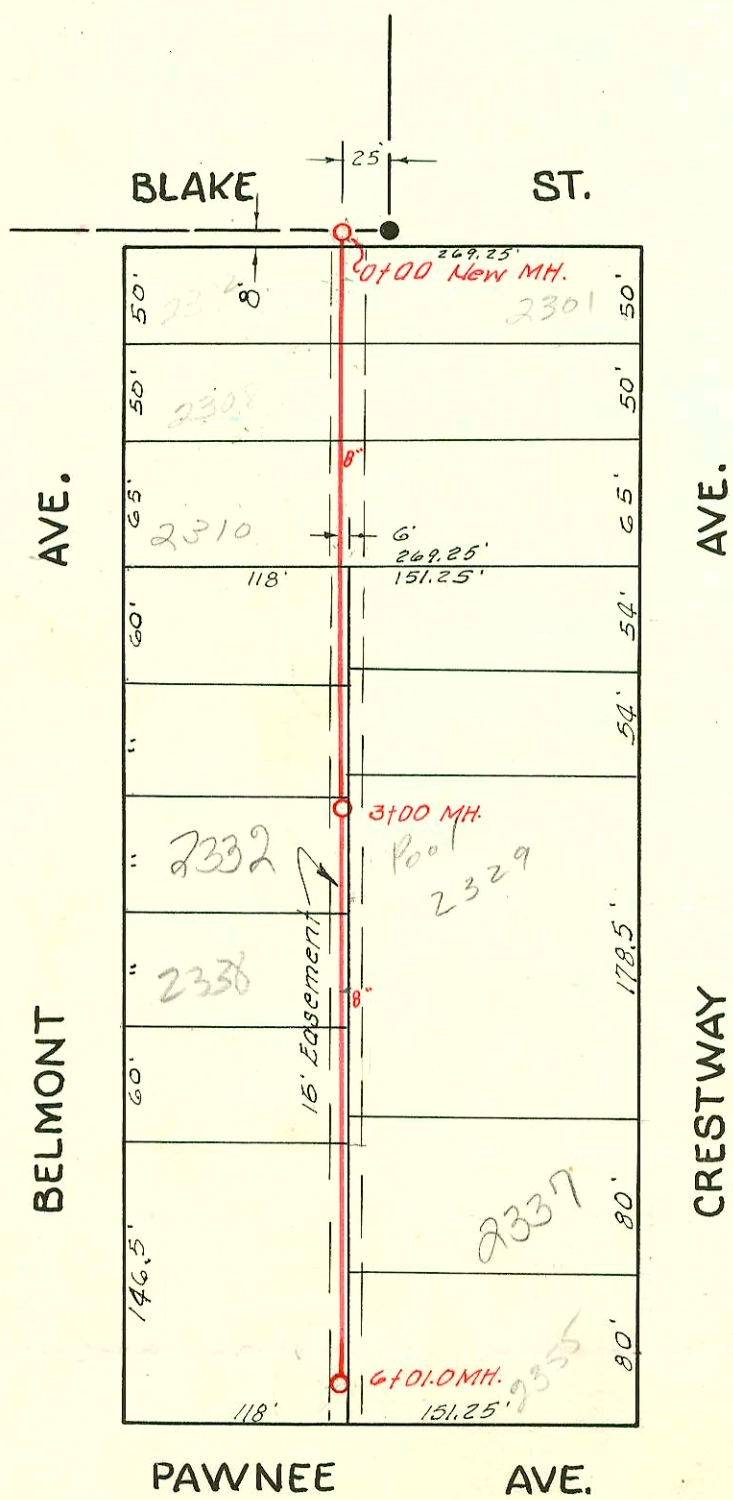


LAT. 2, DIST. T, S.S.# 20

W. B. CARTER , JULY 29, 1953

BOOK NO. JT. 62 , PROJ. NO. C23-31



2003-02148-8/18/03-2332 Belmont- Wichita Exc-  
1 twin co, 1 fernco, 1V45, 1H22, donut into good  
wye, 33' sof with 300 (3+33)

LAT. 3, SUB. 6, W.I.S.

W. B. CARTER , AUG. 7, 1953

BK. JT. 65 , PROJ. NO. C23-18

CONSTRUCTION RECORD

SERVICE RECORD

STATION	ELEVATION		Depth	MANHOLE	4-INCH "Y" BRANCHES		No. of Permit		House Number		DATE OF PERMITS			
	Ground	Grade			North West	South East	North West	South East	North West	South East	North West	South East	North West	South East
0+0	124.7	120.53	4.2	0+00 EXIST'G MH.										
1+0	124.3	120.63	3.7		1+49.0	1+46.0								
2+0	124.3	120.73	3.6		2+12	2+89	C52337	C54409	2607 Hood	2603 Payne	11-6-75	3-25-76		
	124.1	120.76	3.3	2+31.0										
3+0	124.3	120.83	3.5		2+38	2+34.8	C52338	C54410	2608 Hood	2607 Payne	11-6-75	3-25-76		
					2+62.5	2+59.5								
4+0	124.6	120.93	3.7		3+11.0	3+08.0	C52339	C54411	2612 Hood	2621 Payne	11-6-75	3-25-76		
					3+59.0	3+56.0								
4+0	124.4	120.98	3.4	4+50.5	4+10.0	4+07.0	C52340	C54412	2620 Hood	2629 Payne	11-6-75	3-25-76		
					4+60.5	4+57.5	#6738	#9447	2638 Hood	2637 R	10-21-53	6-11-97		
5+0	124.5	121.03	3.5		5+09.5	5+06.5	#6737	#5907	2644 Hood	2643 R	10-21-53	6-28-53		
					5+58.0	5+55.0	#6736	#27002	2650 Hood	2649-R	10-21-53	2-6-91		
6+0	124.4	121.13	3.3		6+09.0	6+06.0	#6735	#5980	2656 Hood	2655 Payne	10-21-53	7-29-53		
					6+60.0	6+57.0	#2059	#2070	2662 Hood	2661 Payne	9-20-54	9-20-54		
	124.9	121.20	3.7	6+72.0										
0+0	124.7	119.70	5.0	0+00 EXIST'G MH.										
1+0	124.6	119.80	4.8		1+60.0	1+57.0	#2069	#2049	2682 Payne	2681 Salina	9-20-54	9-20-54		
2+0	125.0	119.90	5.1		2+19.0	2+16.0	#5968	#5981	2688 Payne	2687 Salina	7-29-53	7-29-53		
					2+30.0									
3+0	125.2	120.00	5.2		2+57.0	2+54.0	#5969	#5982	2691 Payne	2690 Salina	7-29-53	7-29-53		
					3+19.0	3+16.0	#5970	#5983	2694 Payne	2693 Salina	7-29-53	7-29-53		
4+0	125.4	120.10	5.3		3+65.0	3+62.0	#5971	#5984	2696 Payne	2695 Salina	7-29-53	7-29-53		
					4+19.5	4+16.5	#5972	#5985	2698 Payne	2697 Salina	7-29-53	7-29-53		
5+0	125.2	120.20	5.0		4+69.0	4+66.0	#5973	#5986	2699 Payne	2698 Salina	7-29-53	7-29-53		
					5+20.5	5+17.5	#5974	#5987	2699 Payne	2698 Salina	7-29-53	7-29-53		
6+0	125.3	120.30	5.0		5+68.5	5+65.5	#5975	#5988	2699 Payne	2698 Salina	7-29-53	7-29-53		
					6+20.0	6+17.0	#5976	#5989	2699 Payne	2698 Salina	7-29-53	7-29-53		
	125.7	120.39	5.3	6+91.0										
0+0	132.4	118.32	14.1	0+0 New M.H.	0+42.0	0+39.0	#4055	#480	2392 Belmont	2301 So. Crestway	9-1-65	4-7-58		
1+0	134.0	118.62	15.4		0+72.0	0+69.0	#7150	#7151	2308 Belmont	2307 Crestway	12-3-53	12-3-53		
2+0	135.7	118.92	16.8		1+53.0	1+50.0	#7373	#7373	2317 Crestway	2317 Crestway		1-8-54		
					2+12.0	2+09.0	#6211	#147	2320 S. Belmont	2319 Crestway	8-18-53	2-19-54		
3+0	136.2	119.22	17.0	3+00	2+76.0	3+19	#6210	#146	2326 S. Belmont	2323 Crestway	8-18-53	2-19-54		
					3+32.0	3+47.0	#6209	#6065	2332 S. Belmont	2329 Crestway	8-18-53	8-6-53		
4+0	135.5	119.52	16.0		3+96.5	4+77.0	#6208	#6066	2338 S. Belmont	2335 Crestway	8-18-53	8-6-53		
					4+53.0	5+65.0	#6207	#6066	2342 S. Belmont	2339 Crestway	8-18-53	11-19-79		
5+0	134.3	119.82	14.5		5+11.2	5+84.0	#6005	C25384	2348 Belmont	2355 Crestway	9-17-53	11-19-79		
6+0	132.7	120.12	12.6	6+01.0										
0+0	125.8	120.54	5.3	0+00 EXIST'G MH.										
1+0	125.7	120.57 out	5.1	0+32.6										
	125.7	120.77 in	4.9											
2+0	125.7	120.84	4.9											
3+0	125.7	120.94	4.8											
	125.7	120.98	4.7	2+42.7										
4+0	124.8	121.04	4.2											
4+0	124.8	121.14	3.7											
	124.8	121.19	3.6	4+46.0	6" Stub South	#7467			2658 Salina		1-29-54			

Line # 1

Line # 2

Lot 3, Sub. G, W. I. S.

HENRY ROE CLOUD SCHOOL PRIVATE SANITARY SEWER BK. OF 68, UTILITY CONT. INC. Jan. 7, 1954

2002-01770-626103-2619 N Salina-Redd. Rootr-4" PVC 40-4" Wye repair 86' N of MH 2+30(3+16) 14" fall, shallow 4" twin co@ house, 1H22, no alley

2001-00091-16101-2631 N Salina-Semple-4" SCH 40 -Tied to claytile 2' from main - (TWIN) CO

2358-top-2355 Crestway-3-16-54 Time Pllg.-(5+65)

#2050 top-2661 Salina-9-20-54 Home Pllg.  
#2071 top-2662 Payne-9-20-54 Home Pllg.  
2449 top-2653 Woodland-2/21/57 One of field  
#11857 top-2310 S. Belmont-Joe McDonald 11-13-59 (1+56)  
#27002-2644 N. Payne-RD Campbell-3/6/51-Repair-No record of measurements