

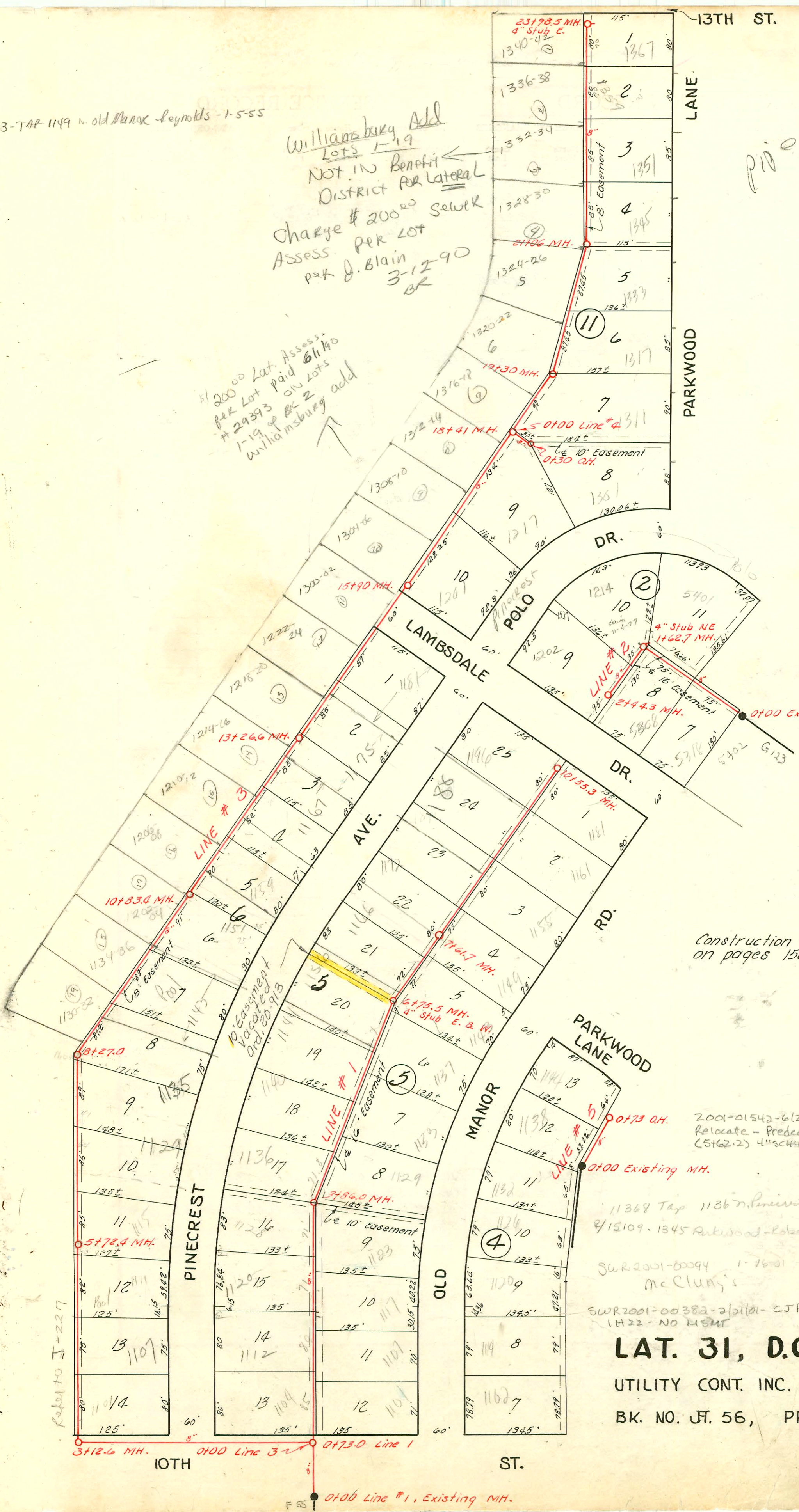
# 3093-TAP-1149 N. Old Manor Reynolds - 1-5-55

Williamsburg Add  
Lots 1-19  
NOT IN Benefit  
District for Lateral  
Charge \$ 200.00 Sewer  
Assess. per Lot  
Per J. Blain  
3-12-90  
BR

51 200.00 Lat. Assess.  
per Lot paid 6/1/90  
# 29393 on Lots  
1-19 of R 2  
Williamsburg add

G-150 A

Pine Lined



Construction Record shown  
on pages 150 & 151.

11-44

2001-01542-6/22/01-1144 N Pinecrest - Polo  
Relocate - Preco 113.54 SW MH 6775.5  
(5162.2) 4\"/>

11368 Tap 11367 Pinecrest Phipps 9-1-59 MH 3486  
8/15/09-1345 Parkwood - Robert Buckley 21406.0 N  
Sur 2001-00094 1-16-01 1143 N Pinecrest -  
McClung's  
SWR 2001-00382-2/21/01 - CJ Pray - Install 1 TWIN CO  
1H22 - NO HSM

**LAT. 31, D.C.S. # 2, S.S. # 12**  
UTILITY CONT. INC., AUG. 29, 1953  
BK. NO. JT. 56, PROJ. NO. C23-14

Refer to J-227

F 55 0106 Line #1, Existing MH.

CONSTRUCTION RECORD

SERVICE RECORD

STATION	ELEVATION		Depth	MANHOLE	4-INCH "Y" BRANCHES		No. of Permit		House Number		DATE OF PERMITS			
	Ground	Grade			North West	South East	North West	South East	North West	South East	North West	South East	North West	South East
Line # 1 0+0	199.6	186.75	12.9	0+00 Exist'g MH.										
1+0	199.6	188.71	10.9	0+73.0	1+04.0	1+01.0	#4552	#6769	1104 N. Pinecrest	1101 N. Pinecrest	5-2-55	10-24-53		
2+0	200.2	188.81	11.4		1+85.7	2+40.0	#2934		1120 N. Pinecrest	1117 N. Pinecrest	6-3-59	10-30-56		
3+0	200.1	188.91	11.2		2+64.7	3+18.7	#493		1123 N. Pinecrest	1123 N. Pinecrest		4-1-54		
4+0	200.5	192.02	8.5	3+86.0	3+36.7	4+08.7	#287		1129 N. Pinecrest	1118 N. Pinecrest	7-13-54	3-4-54 Replaced 13" low end - 11/22, 11/45		
5+0	201.7	192.12	9.6		4+82.7	4+99.7	#1552		1133 N. Pinecrest	1133 N. Pinecrest	6-22-56	7-22-54		
6+0	202.8	192.22	10.6		5+52.7	5+83.7	#1328		1156 N. Pinecrest	1156 N. Pinecrest	3-11-57	3-11-57		
7+0	204.6	195.00	9.6	6+75.5 (4" stub E. & W.)	6+25.0	7+28.7	#1747		1156 N. Pinecrest	1156 N. Pinecrest	3-11-57	8-12-54		
8+0	205.2	195.03	10.2		7+28.7	7+31.7								
9+0	205.9	197.89	8.0	7+61.7	8+56.7	8+53.7	#513		1155 N. Pinecrest	1155 N. Pinecrest		4-3-59		
10+0	208.1	198.04	10.1		9+29.0	9+26.0	#2322		1161 N. Pinecrest	1161 N. Pinecrest		11-1-54		
10+0	209.6	198.14	11.5		9+90	10+11.0								
	210.0	198.19	11.8	10+55.3										
Line # 2 0+0	211.5	202.57	8.9	0+00 Exist'g MH.	0+33.8		#2339					7-2-55		
1+0	211.0	202.67	8.3		1+06.7	1+03.7								
	209.7	202.73	7.0		1+62.7	1+74.8	9715		1214 N. Pinecrest	1214 N. Pinecrest	11-22-83			
	209.7	202.93	6.8	1+62.7	2+39.7	2+39.7	#31084		1302 N. Pinecrest	1302 N. Pinecrest	3-21-72			
2+0	209.5	202.97	6.5		2+44.3									
	209.3	203.01	6.3	2+44.3										
Line # 3 0+0	199.2	187.24	12.0	0+00 = 0+73 in Line # 3										
1+0	197.6	187.34	10.3											
2+0	195.1	187.44	7.7											
3+0	193.1	187.50	5.6											
	193.0	187.55	7.5				#25304		1101 N. Pinecrest	1101 N. Pinecrest	5-11-90	4-11-57		
	193.0	187.75	5.3	3+12.6			#4352							
4+0	193.0	187.84	5.2											
5+0	193.3	187.94	5.4											
	193.1	188.01	5.1	5+72.4			#404		1115 N. Pinecrest	1115 N. Pinecrest	4-3-56			
6+0	193.2	188.04	5.2				#6967		1128 N. Pinecrest	1128 N. Pinecrest	11-50-55	10-8-68		
7+0	195.4	188.14	7.3				#10843							
8+0	196.9	188.24	8.7				#21084		1129 N. Pinecrest	1129 N. Pinecrest	9-9-63	10-8-68		
	197.1	188.27	8.8	8+27.0			25102		1135 N. Pinecrest	1135 N. Pinecrest	6-18-56			
	197.1	188.47	8.6				25482		1143 N. Pinecrest	1143 N. Pinecrest	4-9-55			
9+0	198.0	188.54	9.5				25209		1151 N. Pinecrest	1151 N. Pinecrest	4-23-90	9-5-63		
10+0	200.1	188.64	11.5				#107		1200 N. Pinecrest	1200 N. Pinecrest	4-11-90			
	201.1	188.72	12.4	10+83.4			25103		1210-12	1210-12	4-11-90	3-24-55		
	201.2	192.02	9.2				25104		1214-6	1214-6	4-23-90	6-3-55		
12+0	202.4	192.12	10.3				25210		1218-20	1218-20	6-7-90			
13+0	203.5	192.22	11.3				25485		1222-24	1222-24	6-7-90			
	203.8	192.26	11.5	13+26.6			25486		1300-02	1300-02	6-7-90			
14+0	204.2	192.32	11.9				25487		1308-70	1308-70	4-11-90			
15+0	204.2	192.42	11.8				25211		1312-74	1312-74	4-11-90			
	204.0	192.51	11.5	15+90.0			25509		1316-18	1316-18	6-8-90	8-29-53		
16+0	204.0	192.52	11.5				25510		1320-22	1320-22	4-23-90			
17+0	203.5	192.62	10.9				25510		1324-26	1324-26	4-11-90			
18+0	205.5	192.72	12.8				25212		1328-30	1328-30	6-8-90			
	206.9	192.76	12.1	18+41.0			25510		1345	1345	4-11-90	11-25-85		
19+0	208.0	196.06	11.9				25511		1332-34	1332-34	6-8-90			
	208.4	196.09	12.3	19+30.0										
20+0	208.4	196.16	12.2											
21+0	208.7	196.26	12.4											
	209.1	196.27	12.8	21+06.0										
	209.1	200.00	9.1											

This project continues on page 151

- # 7165 - 1181 N. Old Manor - top Joe Mc Donald 12-4-53
- # 6650 - top - 1181 N. Old Manor - 10-7-53 - Joe Mc Donald
- \* # 1147 - 4" stub NW Manhole # 627 - 1214 N. Pinecrest - 6-9-54 Eugene
- # 2118 - top - 5308 Lambdale - 7-27-54 Prof. Farrell
- # 1644 - top - 1181 N. Pinecrest - 8-3-54 Joe Mc Donald
- # 4229 top - 1177 N. Pinecrest - 4-12-55 - J. R. Landmann
- # 5197 top - 1176 N. Pinecrest - 6-13-55 - Reynolds
- # 6760 - top - 1143 N. Old Manor - 10-20-53
- # 6925 - top - 11547 N. Pinecrest - Arthur
- # 3000 - top - 5401 Solo - Arthur Ray - 11-9-56 (1+751.7)
- # 5000 - top - 5401 Solo - Arthur Ray - 11-9-56 (1+17.2)
- # 5818 top - 1111 N. Pinecrest - 12-5-57
- # 701 top - 1112 N. Pinecrest - 11-13-54 1485 line 1
- 9126 top - 1107 N. Pinecrest - 1-16-59 Callison (4+41.1)