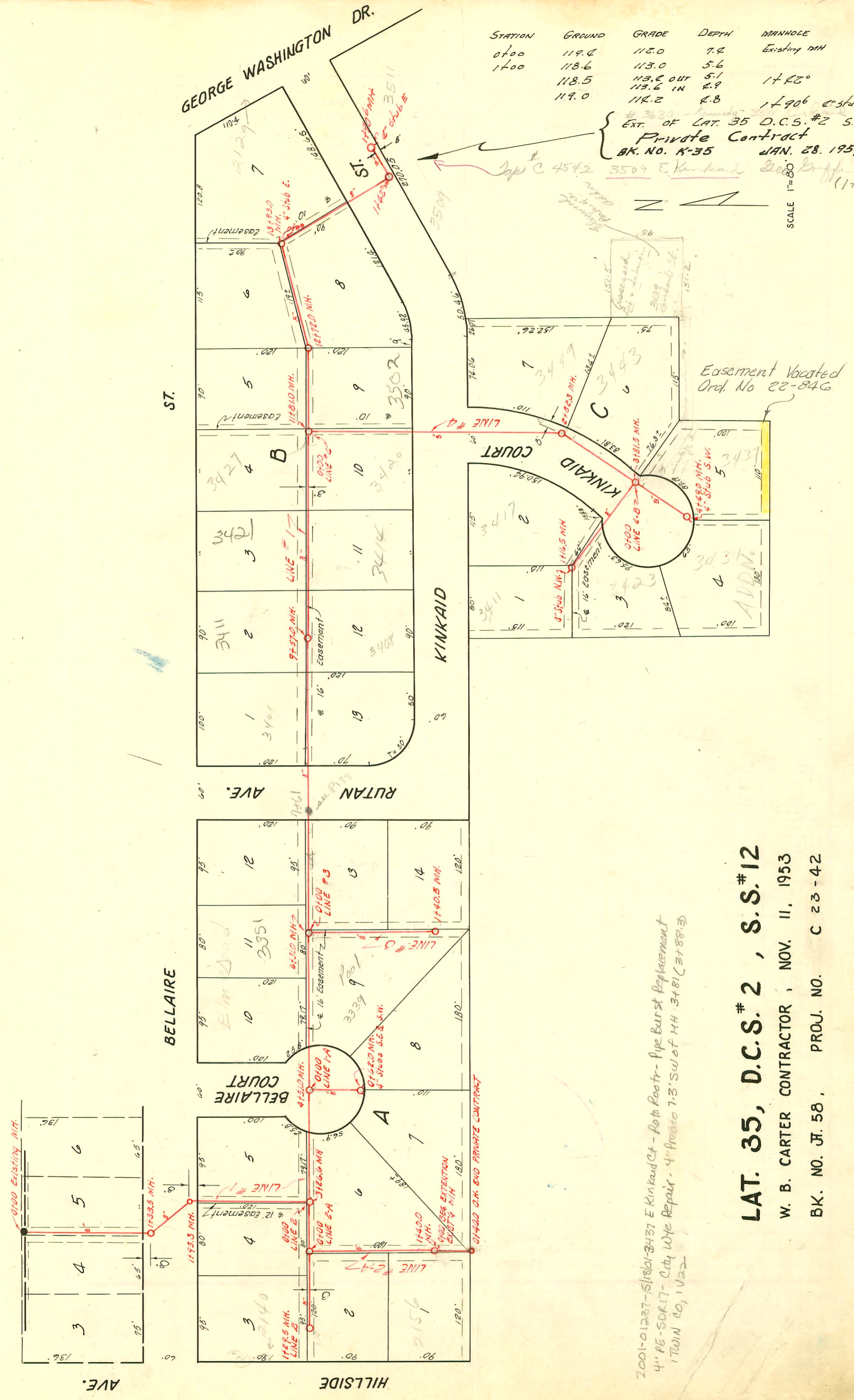


STATION	GROUND	GRADE	DEPTH	MANHOLE
0+00	119.4	112.0	7.4	Existing MH
1+00	118.6	113.0	5.6	
	118.5	113.0 OUT	5.1	1+25°
	119.0	113.6 IN	4.9	1+906 2" stub E
		114.2	4.8	

3630 - Kennedy
 EXT. OF LAT. 35 D.C.S. #2 S.S. 12
Private Contract
 BK. NO. K-35 JAN. 28, 1957.
 3509 E. Kinkaid

SCALE 1"=80'



2001-01237-5/15/01-3437 E Kinkaid Ct - Photo Root - Pipe Burst Replacement
 4" PE-SDR17 - City Wye Repair - 4" Pedro 7.3' SW of MH 3481 (3788-3)
 1 TWIN CO, 1 V22

LAT. 35, D.C.S. # 2, S.S. # 12
 W. B. CARTER CONTRACTOR, NOV. 11, 1953
 BK. NO. JF. 58, PROJ. NO. C 23-42

CONSTRUCTION RECORD

SERVICE RECORD

STATION	ELEVATION		Depth	MANHOLE	4-INCH "Y" BRANCHES		No. of Permit		House Number		DATE OF PERMITS		
	Ground	Grade			North West	South East	North West	South East	North West	South East	North West	South East	
LINE NO. 1 0+0	100.0	96.05	4.0	0+00 Exist'g MH.									
1+0	100.2	96.15	4.0										
	100.1	96.20	3.9	1+38.5									
	99.8	96.25	3.5	1+95.3									
2+0	100.0	96.27	3.7										
3+0	99.7	96.38 out 96.48 in	3.3 3.2	3+26.6									
					3+44.5			#4682	335 Bellair			2-9-55	
4+0	100.1	96.55	3.5										
	100.4	96.60	3.8	4+51.0									
5+0	101.2	96.65	4.6		5+11.0			#4258	3215 Bellair			4-19-55	
					5+97.5			#1820	3351 Bellair			8-1-54	
6+0	101.4	96.75	4.7										
	101.4	96.79	4.6	6+31.0									
					6+76.0			#1130	3357 Bellair			6-9-54	
7+0	102.6	96.85	5.8										
8+0	107.0	96.95	10.0		8+31.0	8+34.0		23975 #2015	3401 B Bellair			9-28-54 9-15-54	
9+0	114.1	97.05	17.1		9+33.0	9+36.0		#597	3411 E Bellair			4-12-54	
	118.9	104.11 out 104.11 in	21.8 14.3	9+57.0									
10+0	122.9	104.04	18.9		10+17.0	10+20.0		#7442	4373 Bellair	3415 Bellair	3414 Bellair	1-21-54 2-26-54	
11+0	124.8	104.14	20.7		11+07.6			13639		3427 Bellair		11-21-60	
						11+13.6							
12+0	120.9	108.23 out 108.00 in	16.7 12.9	11+81.0	12+00	12+03.0		#573		3502 E Kirhard		4-8-54	
	120.1	108.06	12.0		12+92.0	12+95.0		#652	4373	3511 Bellair	3510 E Kirhard	11-17-59 10-29-54	
	117.5	108.36	9.1	12+72.0									
13+0	117.5	108.46	9.0		13+93.0	(4" stub East)		13709		2129 Kirhard		12-27-60	
	117.6	108.84	8.8										
LINE NO. 1-A 0+0	100.4	96.71	3.7	0+00=4+51 in Line #1				S.W. #263		3327 Bellair		3-3-54 ✓	
	99.8	96.77	3.0	0+62.0	(4" stub S.E. & S.W.)			S.E. #264		3323 Bellair		3-3-54	
LINE NO. 2 0+0	99.7	96.48	3.2	0+00=3+26.6 in Line #1				#217		3409 Bellair		9-25-54	
	99.5	96.54	3.0	0+55.0				#2797		3440 S Bellair		11-29-54	
1+0	99.5	96.58	2.9										
	99.4	96.61	2.8	1+29.5									
LINE NO. 2-A 0+0	99.5	96.64	2.9	0+00=0+55.0 Line #2	Wyes West 0+07.5	Wyes East 0+19.0		#7040		3150 S Bellair		11-23-53	
					0+52.0	1+15.0		#7041		3150 S Bellair		11-23-53	
1+0	98.3	96.74	1.6										
	98.7	96.78	1.9	1+40.0									
LINE NO. 3 0+0	101.4	96.89	4.5	0+00=6+31.0 Line #1				#3524		2119 J Bellair		2-18-55	
					0+23.0	0+20.0		#3525		3153 Bellair		2-19-55	
1+0	102.3	96.99	5.3										
	101.8	97.03	4.8	1+40.5									
LINE NO. 4 0+0	121.0	108.00	13.0	0+00=11+81.0 in Line #1									
1+0	118.4	108.40	10.0			1+96.0							
2+0	117.2	108.80	8.4			2+60.5		1567		3447 Bellair		7-21-56	
	116.1	109.13	7.0	2+82.3		2+92.3							
3+0	116.3	109.20	7.1			7th St. Top		22348		3439 Kirhard		3-18-71	
	116.6	109.53	7.1	3+81.5	(8" stub East)	4th St. SDRIT 3+88.0		2051-0127 #6496		3437 B Kirhard	see next PS	5-18-51 11-9-53	
				10 - Per City Crew									
4+0	116.7	109.60	7.1		4+49.0	(4" stub S.W.)		3224 #6497		3431 S Kirhard		6-2-53 11-12-53	
	118.1	109.80	8.3										
LINE NO. 4-B 0+0	116.6	110.00	6.6	0+00=3+81.5 in Line 4				#4851		3447 Kirhard		5-17-55	
					0+67.0	0+64.0							
1+0	121.8	110.40	11.4					57489 12798		3411 E R Kirhard		7-14-74 5-26-60	
	122.3	110.46	11.8	1+16.5	(4" stub N.W.)								
					West	East							
LINE NO 2A EXTENSION 0+0		96.82		0+00=1+400 in Line 2-A O.H. 0+40.0				#4280	#7140	3200 S Bellair	2200 L Nelleide		1-26-56 7-2-55

#2423 - Tap - 2150 So. Rutan - Vaughn Olmby - 11-3-54 7575 Tap 3403 Kirhard
 #6919 - William O. Boyer - 3321 Bellair - 11-11-53 Tap 2254 Tap 2254
 #1094 - Tap - 3501 Bellair - 6-1-54 - Farrell Pkg. Co. Building Pkg. - tap (1+32) Jan 2A
 #2113 - Tap - 3329 Bellair Court - Simmons Olmby - 9-27-54
 #3533 - Tap - 2147 S. Rutan - 2-18-55 - Gasco
 #5694 - Tap - 3409 Kirhard St - 6-3-53 - Dale Pkg. Co.
 5024 Tap - 108 E. Kirhard - 7-75-57
 #6091 Tap - 3420 S. Kirhard - 1-30-54 (4' S. of 0+00)