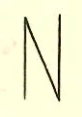
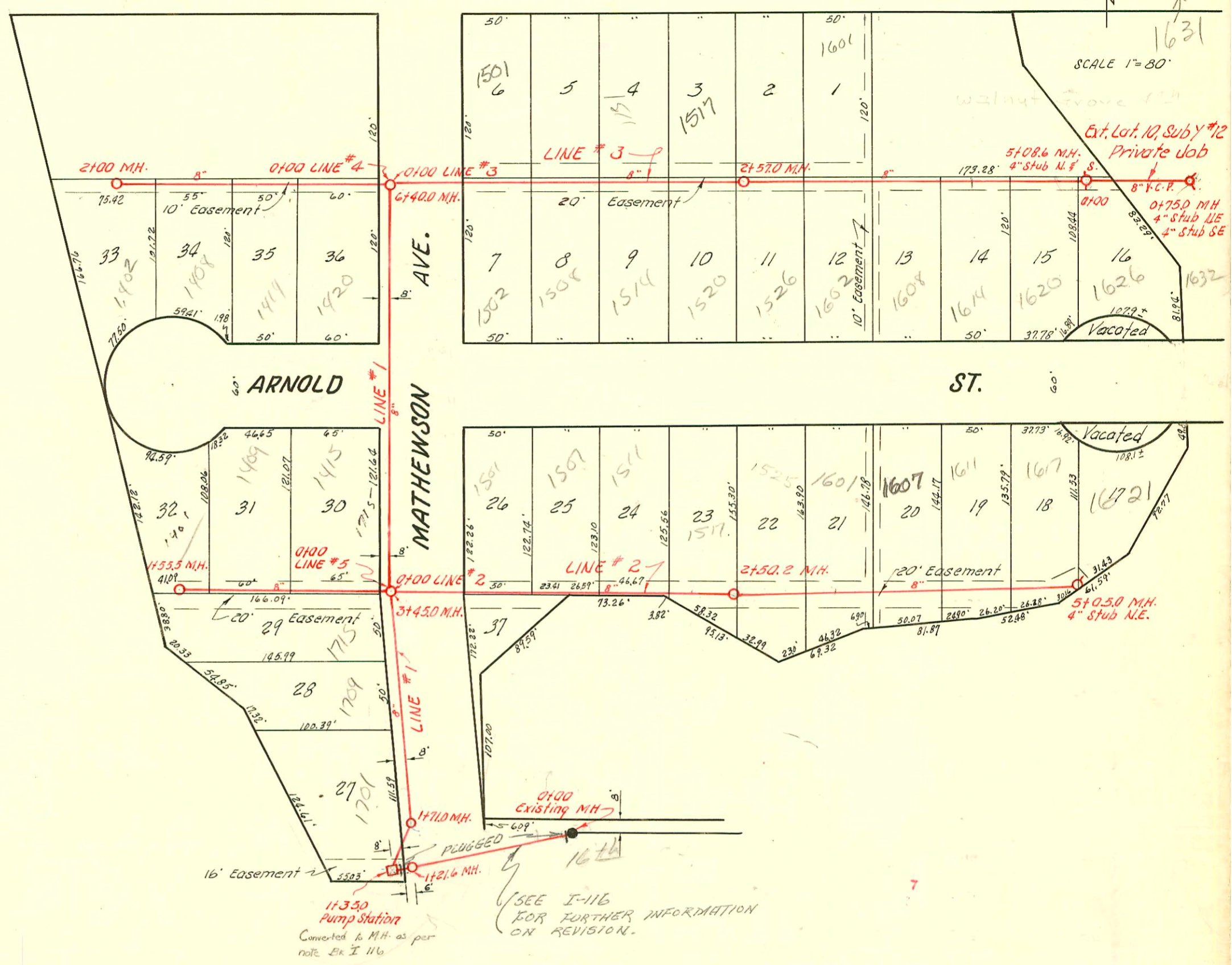


1" = 80'



17TH

ST.



$\frac{452706.6}{527.6}$
 857.16

2003-00296-2/4/03-1607 Arnold- Wichita Exc- city w/ repair 4" Predco 124.6' E of MH 2+50.2 (3+74.8)
 2V 25, 1TWIN CO- 4" SCH 40 PVC- replace exist svc line
 2002-01115-4/17/02-1501 E 17th St N- Royal P/lyg- 4" 40 PVC, 1/4" fall, 1TWINCO, 2 45° EUS, 1 Fernco, 1 donut
 P.L. tied into clay tile 3' off main

2003-00727 9/24/03 1517 E 17th St N Royal P/lyg- tied to existing cust(?) 1TWINCO, 4" SCH 40
 1 Dir (W/et 45) 4' short of SPL

LAT. 10, SUBMAIN Y, S.S. #12
 UTILITY CONST. CO., NOV. 28, 1953
 BK. NO. JT. 69, PROJ. NO. C23-61

CONSTRUCTION RECORD

SERVICE RECORD

| STATION | ELEVATION | | Depth | MANHOLE | 4-INCH "Y" BRANCHES | | No. of Permit | | House Number | | DATE OF PERMITS | |
|---------|-----------|-------|------------|---------|----------------------|-----------------|---------------|------------|--------------|------------|-----------------|------------|
| | Ground | Grade | | | North West | South East | North West | South East | North West | South East | North West | South East |
| | | | | | | | | | | | | |
| LINE #1 | 0+0 | 117.6 | 114.00 | 3.6 | 0+00 | | | | | | | |
| | 1+0 | 117.4 | 114.20 | 3.2 | Exist'g MH. | | | | | | | |
| | | 117.1 | 114.24 out | 4.9 | | | | | | | | |
| | | 117.1 | 113.50 in | 4.6 | 1+21.6 | | | | | | | |
| | | 117.1 | 102.00 out | 5.1 | 1+35 | | | | | | | |
| | | 116.6 | 110.00 in | 7.1 | Pump well | | | | | | | |
| | | 116.6 | 110.07 out | 6.5 | | | | | | | | |
| | | 117.2 | 110.17 in | 6.4 | 1+71.0 | | | | | | | |
| | 2+0 | 117.2 | 110.23 | 7.0 | | | | | | | | |
| | | | | | | 2+02.0 | | | 1701 | | | 1-22-90 |
| | | | | | | 2+51.0 | | | Mathewson | | | 12-1-53 |
| | | | | | | | | | 1709 | | | 12-22-90 |
| | | | | | | | | | Mathewson | | | 12-7-53 |
| | 3+0 | 117.0 | 110.43 | 6.6 | | | | | | | | |
| | | 116.7 | 110.52 | 6.2 | 3+45.0 | | | | | | | |
| | 4+0 | 116.5 | 110.63 | 5.9 | | | | | | | | |
| | 5+0 | 116.7 | 110.83 | 5.9 | | | | | | | | |
| | 6+0 | 116.7 | 111.03 | 5.7 | | | | | | | | |
| | | 117.0 | 111.11 | 5.9 | 6+40.0 | | | | | | | |
| LINE #2 | 0+0 | 117.0 | 110.78 | 6.2 | 0+00=3+45 in Line #1 | Y North | Y South | | | | | |
| | | | | | | 4" SCH 40 | | 2002-0115 | 1501 R | | 4-17-02 | |
| | | | | | | 0+75.3 | 0+72.3 | #7098 | Arnold | | 12-1-53 | |
| | 1+0 | 117.1 | 110.98 | 6.1 | | | | | 1507 | | 12-1-53 | |
| | | | | | | 1+26.0 | | #7099 | Arnold | | 12-26-89 | |
| | | | | | | 1+66.0 | | #24508 | 1511 R | | 12-1-53 | |
| | | | | | | | | #7100 | Arnold | | | |
| | 2+0 | 114.0 | 111.18 | 2.8 | | | | 24019 | 1517 B | | 10-3-89 | |
| | | | | | | 2+20.0 | | #7101 | Arnold | | 12-1-53 | |
| | | 113.8 | 111.28 | 2.5 | 2+50.2 | | | | 1525 | | 12-1-53 | |
| | | | | | | 2+72.0 | | #7102 | Arnold | | | |
| | 3+0 | 114.5 | 111.38 | 5.1 | | | | #24533 | 1601 R | | 1-2-90 | |
| | | | | | | 3+26.0 | | #7103 | Arnold | | 12-1-53 | |
| | | | | | | 3+74.5 | | #24511 | 1607 B | see next | 1-31-89 | 2-4-53 |
| | | | | | | | | #7104 | Arnold | | 12-1-53 | |
| | 4+0 | 116.2 | 111.58 | 4.6 | | | | | 1611 | | 12-1-53 | |
| | | | | | | 4+20.0 | | #7105 | Arnold | | 10-3-89 | |
| | | | | | | 4+66.4 | | #24018 | 1617 B | | 12-1-53 | |
| | | | | | | | | #7106 | Arnold | | | |
| | 5+0 | 116.2 | 111.79 | 4.4 | 5+05.0 | (4" stub N.E.) | | 24617 | 1621 B | | 10-3-89 | |
| | | | | | | | | 4620 | Arnold | | 1-13-54 | |
| LINE #3 | 0+0 | 117.0 | 111.36 | 5.6 | 0+00=6+40 in Line #1 | | | 2002-0115 | 1501 R | see next | 4-17-02 | 12-14-69 |
| | | | | | | 4" SCH 40 | | #7141 | E, 17th | 1502 R | 12-3-53 | 12-3-53 |
| | 1+0 | 116.6 | 111.56 | 5.0 | | | | | 1507 | 1508 R | 12-3-53 | 10-3-89 |
| | | | | | | 1+25.6 | 1+22.6 | #7143 | E, 17th | Arnold | 12-3-53 | 12-3-53 |
| | | | | | | 1+77.4 | 1+74.4 | #7144 | E, 17th | 1514 | 12-3-53 | 12-3-53 |
| | 2+0 | 116.8 | 111.76 | 5.0 | | | | 2002-0121 | 1517 B | 15-20 R | 12-3-53 | 10-3-89 |
| | | | | | | 2+27.0 | 2+23.0 | #7145 | E, 17th | Arnold | 12-3-53 | 12-3-53 |
| | | 117.2 | 111.87 | 5.3 | 2+57.0 | | | | 15-23 | 15-26 | 12-3-53 | 12-3-53 |
| | | | | | | 2+77.5 | 2+74.5 | #7146 | E, 17th | Arnold | 12-3-53 | 12-3-53 |
| | 3+0 | 117.2 | 111.96 | 5.2 | | | | 26211 | 1601 R | 1602 R | 9-26-90 | 10-3-89 |
| | | | | | | 3+28.4 | 3+25.4 | #7147 | E, 17th | Arnold | 12-3-53 | 12-3-53 |
| | | | | | | 3+76.4 | 3+73.4 | #7148 | E, 17th | 1608 R | 12-3-53 | 10-3-89 |
| | 4+0 | 117.5 | 112.16 | 5.3 | | | | | 1614 R | | 2-15-91 | 12-3-53 |
| | | | | | | 4+27.6 | 4+24.6 | #7138 | Arnold | | | |
| | | | | | | 4+73.0 | 4+70.0 | | | | | |
| | 5+0 | 118.2 | 112.36 | 5.8 | | | | | | | | |
| | | 118.1 | 112.38 | 5.7 | 5+08.6 | 4" stub N. & S. | | | | | | |
| LINE #4 | 0+0 | 117.0 | 111.36 | 5.6 | 0+00=6+40 in Line #1 | | | | 1420 | | 12-3-53 | |
| | | | | | | 0+24.0 | 0+21.0 | #7127 | Arnold | | | |
| | | | | | | 0+87.0 | 0+84.0 | #7128 | 1414 | | 12-3-53 | |
| | 1+0 | 116.8 | 111.56 | 5.2 | | | | | 14085 | | 4-20-92 | |
| | | | | | | 1+45.5 | 1+38.5 | #7129 | 1402 | | 12-3-53 | |
| | | | | | | 1+92.5 | 1+90.5 | #7130 | Arnold | | 10-3-89 | 12-3-53 |
| | | 116.8 | 111.76 | 5.0 | 2+00 | | | | | | | |
| LINE #5 | 0+0 | 116.7 | 110.78 | 5.9 | 0+00=3+45 in Line #1 | | | | 1415 B | | 12-14-89 | |
| | | | | | | 0+26.5 | | #7095 | Arnold | | 12-1-53 | |
| | | | | | | | 0+69.0 | #7094 | 1715 | Mathewson | | 12-1-53 |
| | | | | | | 0+87.0 | | #7096 | 1409 R | | 10-3-89 | |
| | 1+0 | 116.6 | 110.98 | 5.6 | | | | | 1401 | | 12-1-53 | |
| | | | | | | 1+47.5 | | #7097 | Arnold | | | |
| | | 117.4 | 111.09 | 6.3 | 1+55.5 | | | | | | | |
| | 0+0 | 117.9 | 112.40 | 5.5 | 0+00 | NORTH SOUTH | | | | | | |
| | | | | | Exist'g MH | | | | | | | |
| | | | | | | 0+43.0 | 0+46.0 | | | | | |
| | | | | | | 0+75.0 | | #C14633 | 1631 E | | 6-24-69 | |
| | | | | | | 4" stub NE. | | | 17th | | | |
| | | | | | | 4" stub SE. | | | | | | |

Ext. Lat. 10, Suby, S.S. #12
 Bk No. L-36, Dec. 30, 1955
 NICHOLS & HEVSELEY CONT.

#24546 Sep-16-20 Arnold - 12-3-53 - H.H. Creekmore (4+65.6) line 3=4" PVC Sch 40
 #7140 - Sep-16-26 Arnold - 12-3-53 - H.H. Creekmore
 #C12710 - Sep-16-26 Arnold - 2-14-69 - Herb. Weaver for D.H.A. (4" M.H. Sep. Sta. 5+08.6)