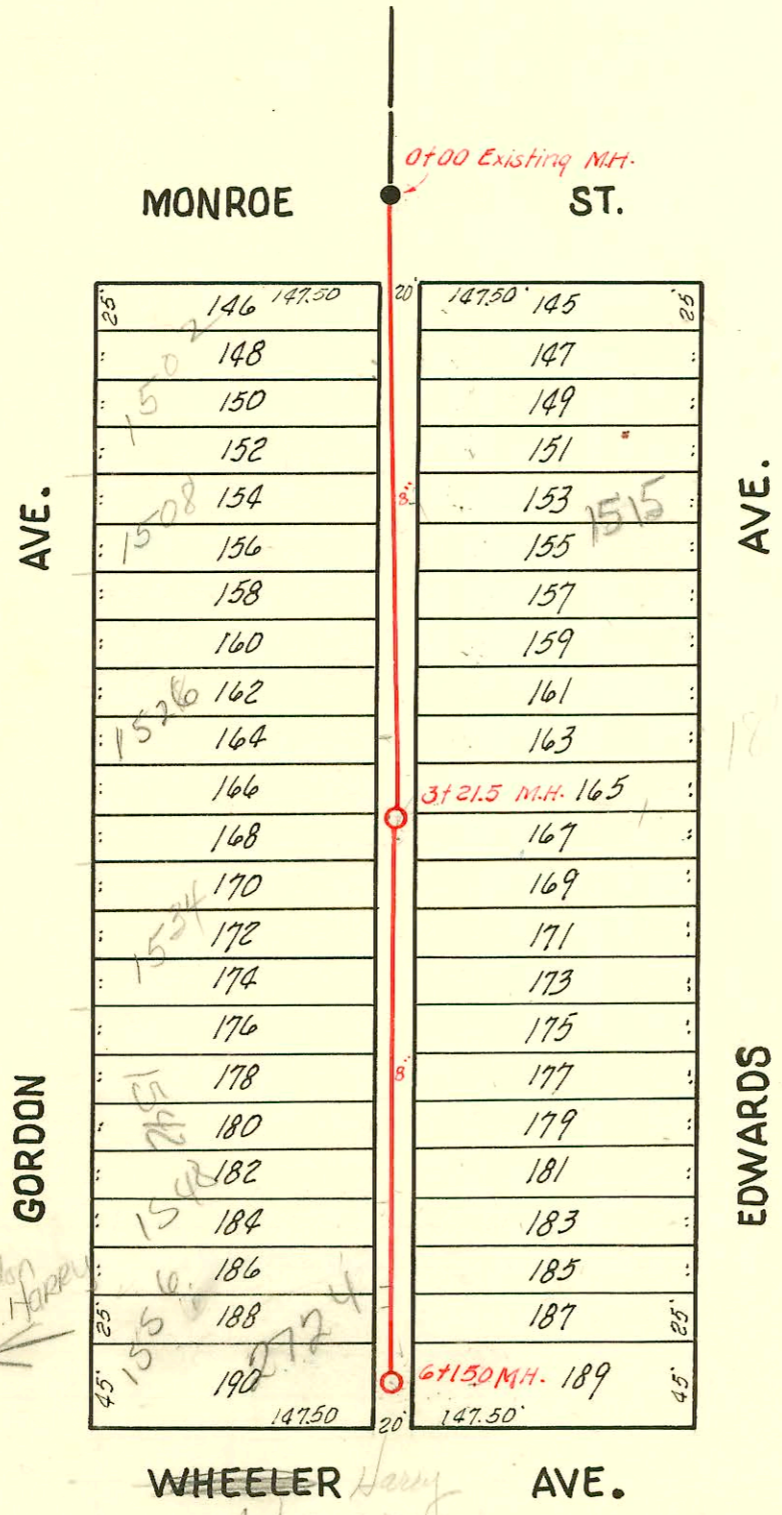


**LAT. 8, DIST. 13, S.S. 12**  
 UTILITY CONT. INC. DEC. 31, 1953  
 BK. JT. 64, PROJ. NO. C23-69

1" = 80'



**LAT. 12, SUBMAIN B, S. S. 21**  
 W. B. CARTER MARCH 10, 1954  
 JT. 70 BK. PROJ. NO. C23-65

1556 1/2 S Gordon  
 chg. to 2724 w. Harry  
 8/9/78

WHEELER Harry  
 AVE. HARRY

2002-02868-1017102-2542 E Raleigh-Jones Swr  
 wye repair (city tap crew) 59' w of MH 6+50.6 (5+91.6)  
 Predco Saddle, av 22 4" sch 40  
 2002-02556-9118102-2542 E Raleigh-Jones Swr  
 1 fernco, 1-4" w of co, 11' 22, tied to existing wye w/ fernco-  
 DL couldn't find MH

