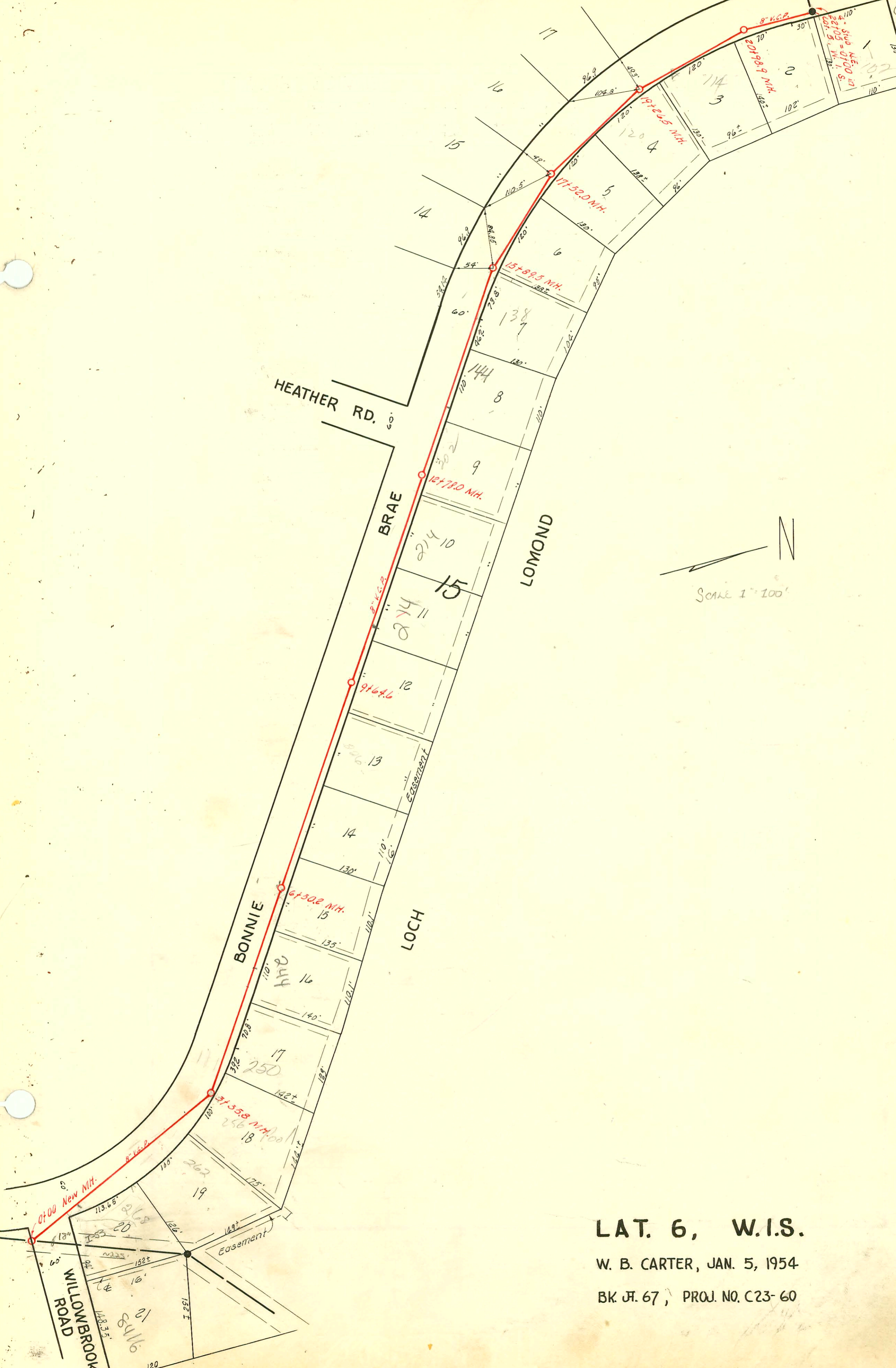


DOUGLAS AVE.



LAT. 6, W.I.S.

W. B. CARTER, JAN. 5, 1954

BK. JT. 67, PROJ. NO. C23-60

CONSTRUCTION RECORD						SERVICE RECORD						
STATION	ELEVATION		Depth	MANHOLE	4-INCH "Y" BRANCHES		No. of Permit		House Number		DATE OF PERMITS	
	Ground	Grade			North West	South East	North West	South East	North West	South East	North West	South East
0+0	146.3	135.00	11.3	0+00 New M.H.	0+85.0		2004-00268 9776		268 RPP Bonnie Brae		2-2-04 3-24-59	
1+0	145.6	135.40	10.2		1+93.7							
2+0	145.9	135.80	10.1		2+90.4							
3+0	146.6 146.8	136.20 136.35 out 139.00 in	10.4 10.4 7.8	3+35.8	3+88.6							
4+0	147.4	139.25	8.2		5+00.7							
5+0	149.0	139.65	9.4		5+25.8							
6+0	151.2	140.05	11.2		6+10.0		97-3226		244 S R Bonnie Brae		8-11-97 12-3-56	
7+0	151.9 153.2	140.25 out 144.00 in	11.7 7.9	6+50.2	7+14.0							
8+0	155.2	144.15	11.0		8+34.3		5781		332 Bonnie Brae		7-27-55	
9+0	156.0	144.25	11.8		9+42.5		15884 #3142		220 R Bonnie Brae		3-18-66 11-26-56	
10+0	156.2 156.1	144.31 144.35	11.9 11.8	9+64.6	10+51.0		44980		274 Bonnie Brae		5-27-55	
11+0	153.9	144.45	11.5		11+63.5							
12+0	153.6	144.55	9.0		12+67.0							
13+0	154.5 155.4	144.63 144.65	9.8 10.8	12+78.0	13+81.7		2002-01348 2002-01678 #3673		144 BR Bonnie Brae see Below		6-18-02 5-14-02 7-28-55	
14+0	157.4	144.75	12.7		14+94.3							
15+0	159.0 159.0	144.85 142.98 out 145.04 in	14.2 14.1 14.6	15+89.5	16+08.7		#350		132 Bonnie Brae		3-10-54	
16+0	159.0	145.05	14.0		17+26.0		#1929		126 Bonnie Brae		9-9-59	
17+0	158.5 158.3	145.15 145.20 out 145.30 in	13.4 13.1 13.0	17+52.0	18+49.7		#1877		100 Bonnie Brae		7-6-56	
18+0	158.1	145.35	12.8		19+26.5							
19+0	155.5 154.8	145.45 145.47	10.0 9.3	19+26.5	19+78.4		13126		114 Bonnie Brae		7-27-60	
20+0	152.7	145.65	7.0	6" Wye West	20+20.3							
21+0	150.9 149.9	145.74 out 145.84 in	5.2 5.1	20+98.9	21+11.7		4249		108 Bonnie Brae		4-3-57	
22+0	148.3	145.95	2.4	22+0.5 = 0+0 in Lot 5 W. I. S.	4" Stub N.E.		20900 #392		100 B Bonnie Brae		6-20-55 5-2-57	

2002-01698-6/18/02-144S Bonnie Brae- Bob Scott- 4" PVC, 1H22, Lower repair  
 2002-01348-5/14/02-144S Bonnie Brae- Bob Scott- 4" SCH40 PVC, 14" fall, 144S, tied back to clay tile

#B3257-138 Bonnie Brae tap in M.H. 15+89.5 4-28-65- Moody-Jones  
 #5781- tap - 332 Bonnie Brae - Home Gldg. - 9-12-55 4485 - tap - 202 Bonnie Brae - Mitchell & Wenzel - 5-31-57  
 #776- tap - 206 Bonnie Brae - Farrell O'Byrne - 5/14/52 4806 - v 208 - v L. Brodie - 6-30-57  
 #1925- tap - 226 Bonnie Brae - R. LaFay Jr. - 8-10-56 5527 - v 262 - v Reynolds - 10-28-59  
 #2779- tap - 332 Bonnie Brae - Lane House - 11-6-56 9776 Tap 268 Bonnie Brae byvette 5/13/59 71.8  
 #3226 tap - 244 Bonnie Brae - Reynolds - 12-3-56  
 2001-00294-354 v tap 250 Bonnie Brae Reynolds 1-9-57 - 27101-Padgett Exc- 4" SCH40 CITY REPAIR 4" PREDCO  
 74.2' N of MH 3+35.8(4+10) - ITWIN CO, 2022, 1 Fernco to CI@house