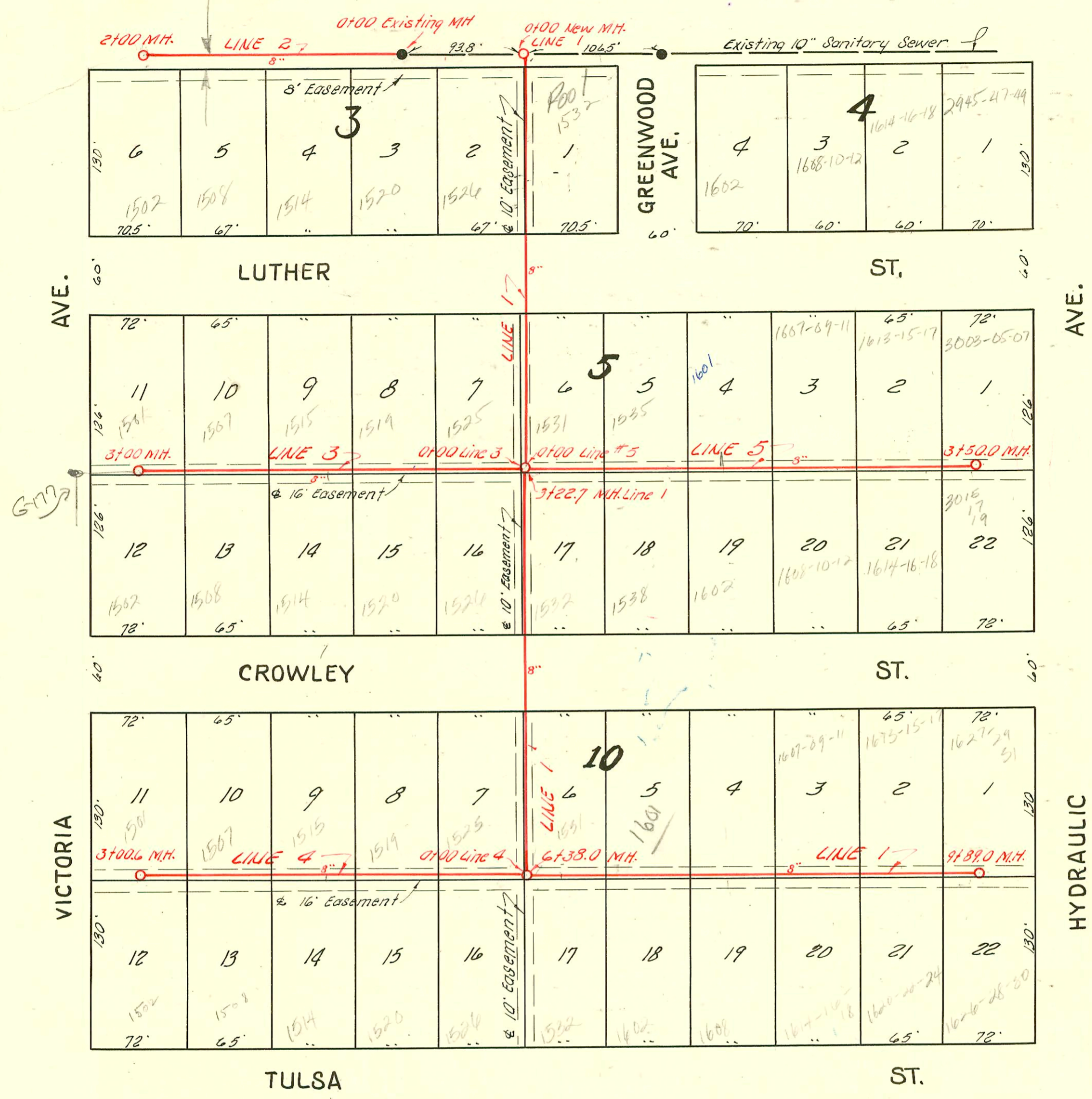


# TRAP AREA



**NOTE:** 6" wyes used on this project.

37' W of MH 0100 (4+87)  
 2001-00271-27101-1520 E Crowley St - Padgett Ex - 4" SCH 40, Donut with 6" wye - Trap installed, ITWIN CO, 1H22, 1H45, Fernco to CF @ house, 1-4X6 Bush (PVC)  
 2002-01692-6118102-1526 E Crowley - Kansas Ditching - 4" PVC 43.5' sof MH 3+22.7 (3+66.2), shallow, ITWIN CO, New house trap

**LAT. I, DIST. A A, S. S. NO. 20**  
 W. B. CARTER, FEB. 8, 1954  
 BK. JT 66, PROJ. NO. C23-63

CONSTRUCTION RECORD

SERVICE RECORD

LINE #1

LINE #2

LINE #3

LINE #4

LINE #5

| STATION | ELEVATION |                    | Depth | MANHOLE                  | 4-INCH "Y" BRANCHES    |               | No. of Permit |            | House Number      |                   | DATE OF PERMITS |            |
|---------|-----------|--------------------|-------|--------------------------|------------------------|---------------|---------------|------------|-------------------|-------------------|-----------------|------------|
|         | Ground    | Grade              |       |                          | North West             | South East    | North West    | South East | North West        | South East        | North West      | South East |
|         |           |                    |       |                          |                        |               |               |            |                   |                   |                 |            |
| 0+0     | 94.8      | 88.23              | 6.6   | New M.H. 0+00            | Y West 0+56.0          | Y East 0+53.0 | #639          |            | 1526 E. Luther    |                   | 4-14-54         |            |
| 1+0     | 93.8      | 88.33              | 5.5   |                          |                        |               |               |            |                   |                   |                 |            |
| 2+0     | 93.5      | 88.43              | 5.1   |                          |                        |               |               |            |                   |                   |                 |            |
| 3+0     | 92.8      | 88.53              | 4.3   |                          |                        |               |               |            |                   |                   |                 |            |
|         | 92.4      | 88.55              | 3.9   | 3+22.7                   | 4" SCH 40 DONUT 3+66.0 | 3+63.0        | #770          | #771       | 1526 E. Luther    | 1532 E. Luther    | 6-18-54         | 4-27-54    |
| 4+0     | 92.0      | 88.63              | 3.4   |                          |                        |               |               |            |                   |                   |                 |            |
| 5+0     | 92.4      | 88.73              | 3.7   |                          |                        |               |               |            |                   |                   |                 |            |
| 6+0     | 93.4      | 88.83              | 4.6   |                          | Y North                | Y South       |               |            |                   |                   |                 |            |
|         | 93.4      | 88.87 out 88.97 in | 4.5   | 6+38.0                   | 6+56.6                 | 6+59.6        | #228          | #404       | 1581 Luther       | 1532 E. Luther    | 5-26-54         | 3-22-54    |
| 7+0     | 93.3      | 89.03              | 4.3   |                          |                        |               |               |            |                   |                   |                 |            |
|         |           |                    |       |                          | 7+23.6                 | 7+26.6        | #229          | #230       | 1602 E. Luther    | 1602 E. Luther    | 2-26-54         | 3-20-54    |
|         |           |                    |       |                          | 7+89.6                 | 7+92.6        | #230          | #230       | 1602 E. Luther    | 1602 E. Luther    | 2-26-54         | 3-20-54    |
| 8+0     | 92.6      | 89.13              | 3.5   |                          |                        |               |               |            |                   |                   |                 |            |
|         |           |                    |       |                          | 8+54.2                 | 8+57.2        | #2680         | #2681      | 145-17-17 Luther  | 1414-16-17 Luther | 11-22-54        | 11-22-54   |
| 9+0     | 91.9      | 89.23              | 3.7   |                          |                        |               |               |            |                   |                   |                 |            |
|         |           |                    |       |                          | 9+17.6                 | 9+20.6        | #2679         | #2682      | 1621-23-25 Luther | 1620-22-24 Luther | 11-22-54        | 11-22-54   |
|         |           |                    |       |                          | 9+81.2                 | 9+84.2        | #2678         | #2683      | 1621-23-25 Luther | 1620-22-24 Luther | 11-22-54        | 11-22-54   |
|         | 91.7      | 89.32              | 2.4   | 9+89.0                   |                        |               |               |            |                   |                   |                 |            |
| 0+0     | 94.5      | 87.93              | 6.6   | 0+00 Exist'g M.H.        |                        | Y South       |               |            | 1520 E. Luther    |                   | 4-14-54         |            |
|         |           |                    |       |                          |                        |               |               |            | 1514 E. Luther    |                   | 4-14-54         |            |
| 1+0     | 94.5      | 88.03              | 6.5   |                          |                        |               |               |            |                   |                   |                 |            |
|         |           |                    |       |                          |                        |               |               |            | #284              | 1507 Luther       |                 | 3-4-54     |
|         |           |                    |       |                          |                        |               |               |            | #283              | 1502 Luther       |                 | 3-4-54     |
|         | 94.3      | 88.13              | 6.2   | 2+00                     | Y North                | Y South       |               |            |                   |                   |                 |            |
| 0+0     | 92.4      | 88.66              | 3.7   | 0+00 = 3+22.7 in Line #1 | 0+20.0                 | 0+87.0        | #764          | #2235      | 1525 Luther       | 1520 Luther       | 4-23-54         | 2-20-54    |
|         |           |                    |       |                          | 0+84.0                 | 0+87.0        | #765          | #281       | 1519 Luther       | 1520 Luther       | 4-23-54         | 3-4-54     |
| 1+0     | 92.1      | 88.76              | 3.3   |                          |                        |               |               |            |                   |                   |                 |            |
|         |           |                    |       |                          | 1+47.0                 | 1+50.0        | #766          | #280       | 1515 Luther       | 1514 Luther       | 4-23-54         | 3-1-54     |
| 2+0     | 92.1      | 88.86              | 3.2   |                          |                        |               |               |            |                   |                   |                 |            |
|         |           |                    |       |                          | 2+14.0                 | 2+17.0        | #767          | #279       | 1507 Luther       | 1508 Luther       | 5-17-54         | 3-2-54     |
|         |           |                    |       |                          | 2+80.0                 | 2+83.0        | #282          | #278       | 1501 Luther       | 1502 Luther       | 3-4-54          | 3-4-54     |
| 3+00    | 92.0      | 88.96              | 3.0   | 3+00                     | Y North                | Y South       |               |            |                   |                   |                 |            |
| 0+0     | 93.4      | 88.97              | 4.4   | 0+00 = 6+38.0 in Line #1 | 0+19.6                 | 0+22.6        | #207          | #403       | 1525 Luther       | 1526 Luther       | 2-26-54         | 4-3-54     |
|         |           |                    |       |                          | 0+86.6                 | 0+89.6        | #226          | #402       | 1519 Luther       | 1520 Luther       | 2-26-54         | 3-22-54    |
| 1+0     | 93.8      | 89.07              | 4.7   |                          |                        |               |               |            |                   |                   |                 |            |
|         |           |                    |       |                          | 1+53.6                 | 1+56.6        | #225          | #401       | 1515 Luther       | 1514 Luther       | 2-26-54         | 3-22-54    |
| 2+0     | 93.8      | 89.17              | 4.6   |                          |                        |               |               |            |                   |                   |                 |            |
|         |           |                    |       |                          | 2+17.6                 | 2+20.6        | #224          | #400       | 1507 Luther       | 1508 Luther       | 2-26-54         | 3-22-54    |
|         |           |                    |       |                          | 2+80.6                 | 2+83.6        | #223          | #399       | 1501 Luther       | 1502 Luther       | 2-26-54         | 3-22-54    |
| 3+0     | 93.7      | 89.27              | 4.4   | 3+00.6                   | Y North                | Y South       |               |            |                   |                   |                 |            |
| 0+0     | 92.4      | 88.66              | 3.7   | 0+00 = 3+22.7 in line #1 | 0+21.0                 | 0+88.0        | #2069         | #761       | 1521 Luther       |                   | 12-11-54        | 4-23-54    |
|         |           |                    |       |                          | 0+85.0                 | 0+88.0        | #762          | #762       | 1525 Luther       | 1538 Luther       | 4-23-54         | 5-7-54     |
| 1+0     | 93.5      | 88.76              | 4.7   |                          |                        |               |               |            |                   |                   |                 |            |
|         |           |                    |       |                          | 1+49.0                 | 1+52.0        | #763          | #1398      | 1601 Luther       | 1602 Luther       | 1-26-54         | 7-6-54     |
| 2+0     | 94.3      | 88.86              | 5.4   |                          |                        |               |               |            |                   |                   |                 |            |
|         |           |                    |       |                          | 2+14.2                 | 2+17.2        |               |            |                   |                   |                 |            |
|         |           |                    |       |                          | 2+79.2                 | 2+82.2        |               |            |                   |                   |                 |            |
| 3+0     | 94.5      | 88.96              | 5.5   |                          |                        |               |               |            |                   |                   |                 |            |
|         |           |                    |       |                          | 3+39.5                 | 3+42.5        |               |            |                   |                   |                 |            |
|         | 94.4      | 89.01              | 5.4   | 3+50.0                   |                        |               |               |            |                   |                   |                 |            |

2001-00187-1/26/61-1601 E Luther-Wichita Ex - 4" SCH 40-CITY REPAIR 6" Predco 301' wof MH 3+50(1+47) Trap installed, 1V22, 1V45, 1H45

#2112-6" aw 8" 3003-05-07 5" Hydraulic - Simmons Plumbing - 9-27-54  
 #2123-6" aw 8" 1618-15-17 Luther - Simmons Plumbing - 9-28-54  
 #2126-6" aw 8" 1608-10-12 Crowley - Simmons Plumbing - 9-28-54  
 #2125-6" aw 8" 1614-16-18 Crowley - Simmons Plumbing - 9-28-54  
 #2124-6" aw 8" 3315-17-19 5" Hydraulic - Simmons Plumbing - 9-28-54  
 #2113-6" aw 8" 1607-09-11 2" Luther - " - 9-27-54