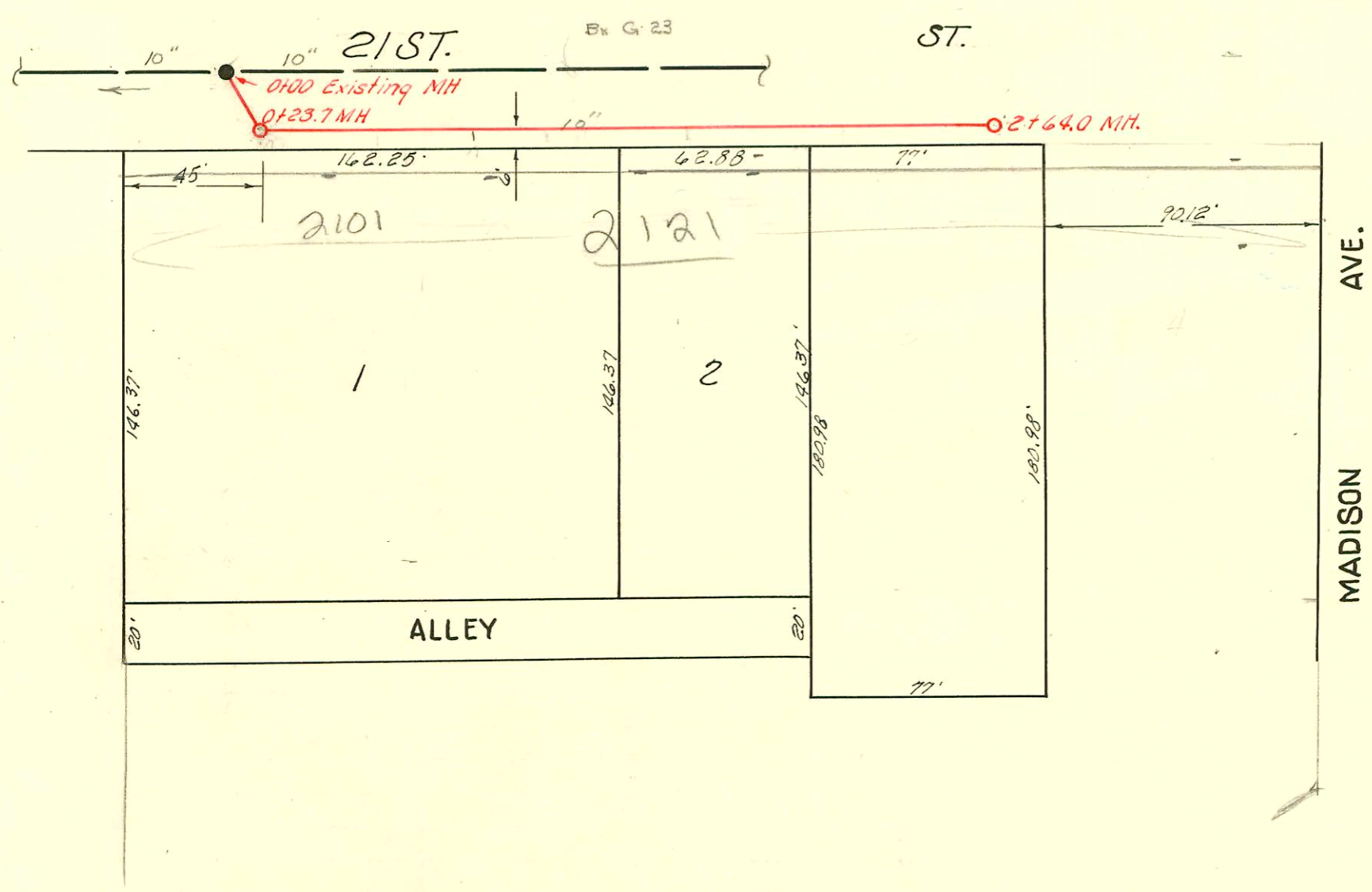


LAT. 30, D.C.S. 2, S. S. 12

W. B. CARTER MARCH 31, 1954

BK. NO. J. H. K. MISC., PROJ. NO. C23-10



SCALE 1"=50'

LAT. 24, DIST. E, S. S. 12

W. B. CARTER APRIL 5, 1954

BOOK NO. JT. 59, PROJ. NO. C23-20

