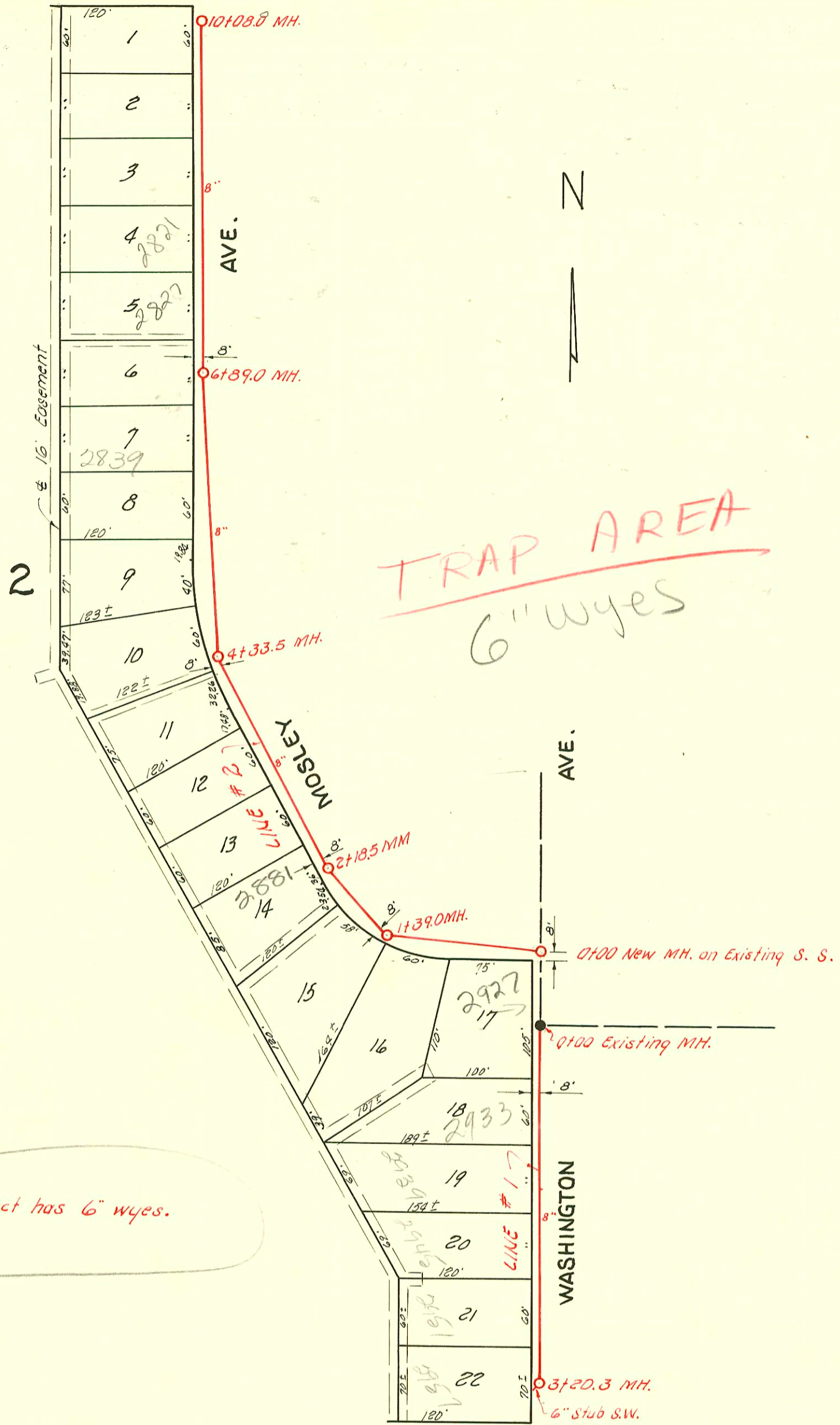


WASSALL AVE.



TRAP AREA  
6" wyes

NOTE: This project has 6" wyes.

LAT. 21, DIST. A, S. S. 20

UTILITY CONT. INC. APRIL 2, 1954

BOOK NO. K-20, PROJ. NO. C23-62

CONSTRUCTION RECORD

SERVICE RECORD

STATION	ELEVATION		Depth	MANHOLE	5 INCH "Y" BRANCHES		No. of Permit		House Number		DATE OF PERMITS	
	Ground	Grade			North West	South East	North West	South East	North West	South East	North West	South East
Line #1	0+0	95.0	4.3	0+00 New MH.								
	1+0	95.6	4.8		1+04.5		#560		2893 S. Washburn		6-21-54	
		95.4	4.6		1+53.6		#561		2887 S. Washburn		4-8-54	
		90.84	4.5	1+39.0	2+05.3		#560		2881 S. Washburn		4-8-54	
	2+0	95.8	4.8		2+64.0		#559		2875 S. Washburn		4-8-54	
		95.8	4.8	2+18.5	3+26.5		#558		2869 S. Washburn		4-8-54	
					3+87.5		#557		2863 S. Washburn		4-8-54	
	4+0	96.3	5.1		4+42.7		#556		2857 S. Washburn		4-8-54	
		96.3	5.1	4+33.5	5+03.7		#555		2851 S. Washburn		4-8-54	
					5+61.0		#7113		2845 S. Washburn		12-3-54	
							554				4-8-54	
					6+22.6		#536		2835 S. Washburn		4-7-54	
					6+80.8		#6778		2833 S. Washburn		10-13-54	
							533				4-8-54	
		96.1	4.6	6+89.0	7+42.3		#552		2827 S. Washburn		4-8-54	
		96.4	4.9		8+05.0		#561		2821 S. Washburn		4-8-54	
					8+60.7		#550		2815 S. Washburn		4-8-54	
					9+22.3		#204757		2809 S. Washburn		12-23-54	
					9+95.4		549		2801 S. Washburn		4-8-54	
							#548				4-8-54	
	10+0	95.4	3.7	10+08.8								
Line #2	0+0	94.6	4.1	0+00 Existing MH.	0+13.0		#537		2927 S. Washburn		4-7-54	
					0+89.6		#563		2923 S. Washburn		4-8-54	
					4" SCH 40		#564		2919 S. Washburn	see below	3-22-54	
					H70.3						4-8-54	
					2+08.0		#17257		2915 S. Washburn		11-6-54	
					2+68.5		#565		2911 S. Washburn		4-8-54	
							#566					
							#567		2907 S. Washburn		4-8-54	
		96.1	5.4									
		96.1	5.3	3+20.3 (6" stub SW)								

2000-00748-3(22)00- FANK NO LEAKS- 4" SCH 40 - 4" TRAP INSTALLED, L. TWIN CO