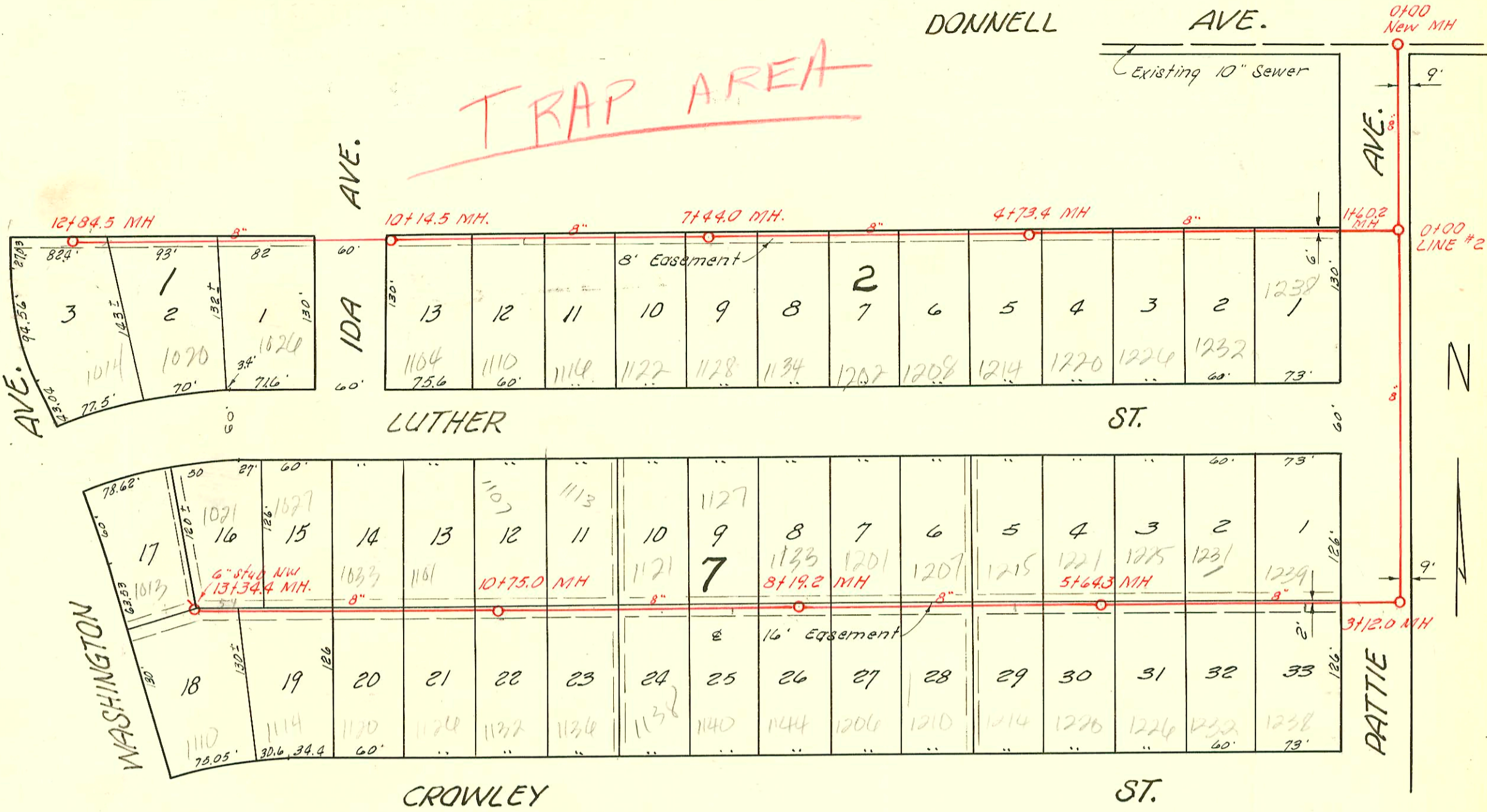


DONNELL

AVE.

TRAP AREA



1" = 100'

NOTE: 6" wyes used on this project.

LAT. 3, DIST. AA, S. S. NO. 20
 W. B. CARTER, APRIL 20, 1954
 BK. NO. JF. 67 PROJ. NO. C24-2

2002-00971-418102-1110 E Luther-Dutchmans - tied to wye w/donut, twinco, 4" sch 40, 14" fall, new trap
 2003-02861-1113103-1116 E Luther-OVERNIGHT SVCS-1 twinco, new trap, 1/2" dia, city main repair next
 to original wye, tied into original wye 4" x 4" PVC shallow, 98' W of MH 744 (8142) full replacement

CONSTRUCTION RECORD

SERVICE RECORD

STATION	ELEVATION		Depth	MANHOLE	6-INCH "Y" BRANCHES		No. of Permit		House Number		DATE OF PERMITS	
	Ground	Grade			North	South	North West	South East	North West	South East	North West	South East
0+0	93.3	89.52	3.8	0+00								
1+0	93.5	89.60	3.9									
	93.4	89.66 out 89.76 in	3.7	1+60.2								
2+0	93.3	89.80	3.5									
3+0	93.2	89.90	3.3			2+28.3	# 729		1238 Luther			4-21-54
						3+12.2	# 730		1232 Luther			4-21-54
						3+54.3	# 731		1226 Luther			4-21-54
4+0	94.2	90.00	4.2			4+32.3	# 732		1220 Luther			4-21-54
	94.5	90.07	4.4	4+73.4		4+77.4	# 733		1214 Luther			4-21-54
5+0	94.9	90.10	4.8			5+52.4	# 734		1208 Luther			4-21-54
						5+94.3	# 735		1202 Luther			4-21-54
6+0	94.6	90.20	4.4			6+74.3	# 736		1134 Luther			4-21-54
7+0	95.7	90.30	5.4			7+16.5	# 737		1128 Luther			4-21-54
	95.3	90.34	5.0	7+44.0		7+91.3	# 738		1122 Luther			4-21-54
8+0	95.3	90.40	4.9			4" PVC 8+42.0	2003-02861 #1241		1116 R Luther	see next pg		11-30-03 6-21-54
9+0	95.5	90.50	5.0			4" PVC 9+02.0 9+65.0	2002-00971 #1240 #1239		1110 R Luther	seenext		4-8-02 6-21-54 6-21-54
10+0	95.4	90.60	4.8									
	95.7	90.61	5.1	10+14.5								
11+0	96.2	90.70	5.5			11+09.0	# 1238		1026 Luther			6-21-54
						4" PVC 11+86.5	2002-03299 #1237		1020 R Luther	see below		12-6-02 6-21-54
12+0	96.5	90.80	5.7			12+71.0	2002-03299 #1237		1014 R Luther	Depth (see pg 1)		6-1-04 3-11-54
	97.8	90.88	6.9	12+84.5								
Line #2 0+0	93.4	89.76	3.6	0+00 = 1+60.2 in Line #1								
1+0	92.7	89.86	2.8									
2+0	91.8	89.96	1.8									
3+0	93.5	90.06	3.4									
	96.3	90.07	6.2	3+12.0								
4+0	95.1	90.16	4.9			3+96.0	# 675	# 745	1237 Luther	1238 (R) Crowley		4-20-54 4-21-54
5+0	95.2	90.26	4.9			4+56.5	# 676	# 746	1231 Luther	1232 Crowley		4-20-54 4-21-54
6+0	95.4	90.36	5.0			5+16.6	4" PVC - 90' type # 677	96-110857 # 747	1225 R Luther	1226 R Crowley		11-19-03 4-20-54 4-21-54
7+0	95.7	90.33	5.4	5+64.3		5+71.5	97-4447 # 678	# 748	1221 Luther	1220 Crowley		3-26-77 4-20-54 4-21-54
8+0	95.4	90.36	5.0			6+34.0	91-4447 # 679	# 749	1215 R Luther	1214 R Crowley		1-15-91 4-20-54 4-21-54
9+0	95.7	90.33	5.4	5+64.3		6+95.0	# 680	# 693	1207 R Luther	1210 Crowley		5-19-92 4-20-54 4-20-54
10+0	93.7	90.46	3.2			7+55.0	# 681	# 694	1201 Luther	1206 Crowley		4-20-54 4-20-54
11+0	94.2	90.56	3.6			8+08.5	# 682	24528 # 695	1133 Luther	1144 R Crowley		1-2-90 4-20-54 4-20-54
12+0	94.1	90.58	3.5	8+19.2		8+72.0	# 683	# 696	1127 Luther	1140 Crowley		4-20-54 4-20-54
13+0	94.3	90.66	3.6			9+32.0	# 684	# 697	1121 Luther	1138 Crowley		4-20-54 4-20-54
14+0	94.5	90.76	3.7			9+95.0	# 685	# 698	1113 Luther	1136 R Crowley		3-20-92 4-20-54 4-20-54
15+0	94.6	90.84	3.8	10+75.0		10+54.4	# 686	# 699	1107 R Luther	1132 Crowley		3-3-01 4-20-54 4-20-54
16+0	94.6	90.84	3.8	10+75.0		11+14.5	# 687	# 700	1101 Luther	1126 Crowley		4-20-54 4-20-54
17+0	94.7	90.86	3.8			11+73.5	# 688	# 701	1033 Luther	1120 Crowley		4-20-54 4-20-54
18+0	94.8	90.96	3.8			12+33.3	# 689	# 702	1027 Luther	1114 Crowley		4-20-54 4-20-54
19+0	94.6	91.06	3.5			12+95.6	# 690		1021 Luther			3-20-80 4-20-54
20+0	94.6	91.09	3.5	13+34.4 (6" stub NW)		13+22.5	26423 # 691	# 703	1023 Luther	1110 Crowley		10-31-90 4-20-54

2002-03299 1216102 1020 Luther-Jones SWR - 4" PVC, 2TWIN CO, 1H45, 1V22, tied to 6" clay tile