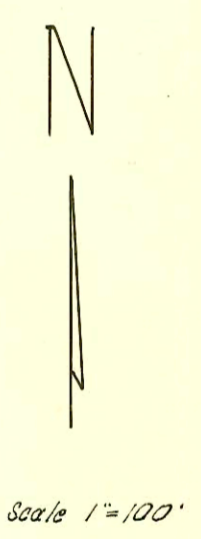
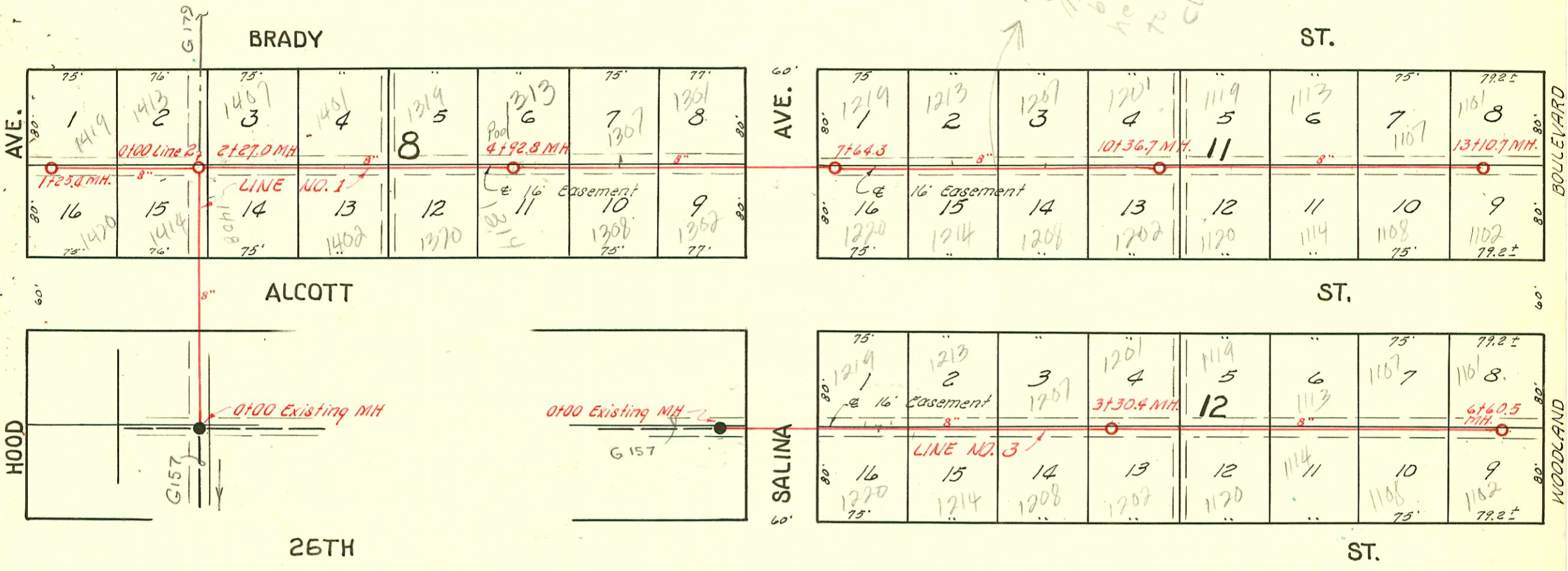


6-3-94
 AL Party City AL
 advised 6-3-94
 main to 50 Brady Side
 he advised AL to
 to be concrete main appears
 close to wye for
 1213 Brady
 BR



LAT. 10, DIST. T., S. S. 20
 W. B. CARTER APRIL 30, 1954
 BK. JT. 66 , PROJ. NO. C 23-56

CONSTRUCTION RECORD

SERVICE RECORD

STATION	ELEVATION		Depth	MANHOLE	4-INCH "Y" BRANCHES		No. of Permit		House Number		DATE OF PERMITS	
	Ground	Grade			North West	South East	North West	South East	North West	South East	North West	South East
0+0	126.3	121.56	4.7	0+00 Existing MH.								
1+0	125.1	121.66	3.4									
2+0	125.7	121.76	3.9									
	125.9	121.79 out 121.89 in	4.1 4.0	2+27.0								
3+0	125.6	121.96	3.6		2+80.4	2+83.4	#929	#846	1407 Brady	1408 Alcott	5-13-54	5-5-54
4+0	126.0	122.06	3.9		3+56.0	3+59.0	#928	#842	1401 Brady	1409 Alcott	5-13-54	5-5-54
	126.2	122.15	4.1	4+92.8	4+32.2	4+35.2	#927	#843	1319 Brady	1320 Alcott	5-13-54	5-5-54
5+0					5+04.0	5+07.0	#926	#844	1313 Brady	1314 Alcott	5-13-54	9-4-54 5-5-54
					5+82.0	5+85.0	#925	#845	1307 Brady	1308 Alcott	5-13-54	5-5-54
6+0	126.1	122.26	3.8		6+40.5	6+43.5	#1250	#1849	1301 Brady	1302 Alcott	8-30-54	8-30-54
7+0	126.2	122.36	3.8		7+78.0	7+81.0	#1780	#1779	1219 Alcott	1220 Alcott	8-17-54	8-17-54
	125.0	122.42	2.6	7+64.3	4" sch 40 RW 8+65.0	8+68.0	#81307 #924	#841	1213 Brady	1214 Alcott	5-31-54 5-13-54	5-5-54
9+0	125.3	122.56	2.7		4" sch 40 9+40.0	9+43.0	#123507 #923	#840	1207 Brady	1208 Alcott	8-2-54 5-13-54	5-5-54
10+0	126.2	122.66	3.5		10+19.0	10+22.0	#922	#839	1201 Brady	1202 Alcott	5-13-54	5-5-54
	126.6	122.70	3.9	10+36.7	10+91.0	10+94.0	#921	#838	1119 Brady	1120 Alcott	5-13-54	5-5-54
11+0	127.6	122.76	4.8		11+57.3	11+60.3	#920	#917	1113 Brady	1114 Alcott	5-13-54	5-13-54
12+0	128.0	122.86	5.1		12+32.3	12+35.3	#919	#916	1109 Brady	1108 Alcott	5-13-54	5-13-54
					12+95.3	12+98.3	#1787	#1788	1107 Brady	1108 Alcott	8-17-54	8-17-54
13+0	128.2	122.96	5.2		128.0	122.97	5.0	13+10.7				
Line #2 0+0	126.3	121.89	4.4	0+00 = 2+27.0 Line #1	0+14.0	0+17.0	#2093	#847	1413 Brady	1414 Alcott	9-23-54	5-5-54
					0+72.8	0+82.8	#2094		1419 Brady		9-23-54	
1+0	126.3	121.99	4.3		1+23.4							
	126.6	122.02	4.6									
Line #3 0+0	126.3	122.00	4.3	0+00 Existing MH.								
1+0	125.4	122.10	3.3		1+32.0	1+35.0	#1776	#2286 1775	1219 Alcott	1220 Alcott	4-6-54 8-17-54	8-17-54
2+0	125.0	122.20	2.8		2+14.5	2+17.5	#836	#832	1213 Alcott	1214 Alcott	5-5-54	5-5-54
					2+89.0	2+92.0	#835	#831	1207 Alcott	1208 Alcott	5-5-54	5-5-54
3+0	125.1	122.30	2.8		3+64.4	3+67.4	#834	#830	1201 Alcott	1202 Alcott	5-5-54	5-5-54
	125.2	122.33	2.9	3+30.4	4+40.2	4+43.2	#833	#829	1119 Alcott	1120 Alcott	5-5-54	5-5-54
4+0	126.2	122.40	3.8		5+12.8	5+15.8	#857	#828	1113 Alcott	1114 Alcott	5-5-54	5-5-54
					5+88.8	5+91.8	#856	#827	1107 Alcott	1108 Alcott	5-5-54	5-5-54
6+0	128.1	122.60	5.5		6+50.0	6+53.0	#1789	#1790	1101 Alcott	1102 Alcott	8-17-54	8-17-54
	128.3	122.66	5.6	6+60.5								

#2095 top 1420 Alcott - Home Pkg - 9-23-54