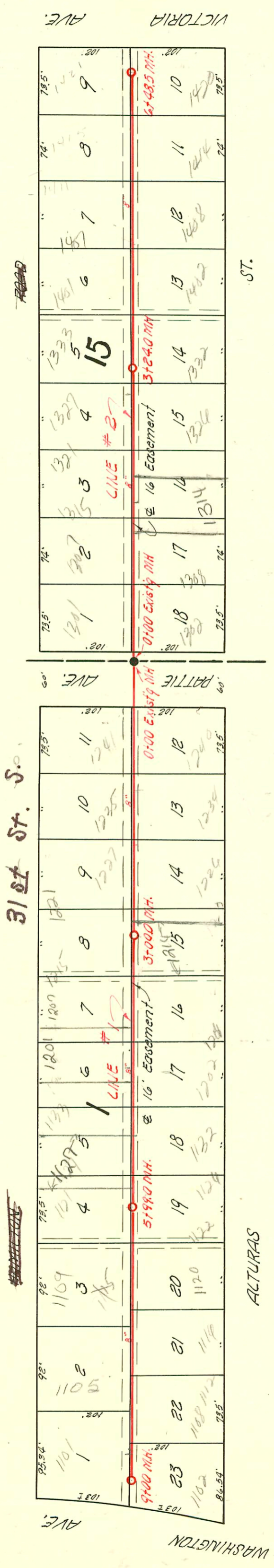


TRAP AREA



NOTE: 6-Inch "Y" Branches used on this project.

LAT. 3, SUB. 1, S. S. N° 22

W. B. CARTER
JULY 27, 1954

BK. NO. K-16
PROJ. NO. C 24 - 18

- # 2931 - 6-8 wye - 1402 Altman - Home - 12-14-54
- # 2932 - 6-8 wye - 1408 Altman - Home - 12-14-54
- # 2929 - 6-8 wye - 1401 Hamilton - Home - 12-14-54
- # 2930 - 6-8 wye - 1407 Hamilton - Home - 12-14-54

CONSTRUCTION RECORD

SERVICE RECORD

STATION	ELEVATION		Depth	MANHOLE	6-INCH "Y" BRANCHES		No. of Permit		House Number		DATE OF PERMITS	
	Ground	Grade			North West	South East	North West	South East	North West	South East	North West	South East
0+0	88.8	82.75	6.0	0+00 Existg MH.	0+75.2	0+78.2	#1594	95-20417 #1600	1241 Hamilton	1240 Alturas	7-27-54	7-27-54
1+0	89.3	82.85	6.5		1+40.0 1+97.0	1+43.0 4" SCH 40	#1595 #1596	200181178 #1601	1235 Hamilton	1234 R Alturas	7-27-54	7-27-54
2+0	89.5	82.95	6.5		2+54.5	2+00.0 2+57.5	#1597	#1602 #1603	1221 Hamilton	1226 Alturas	7-27-54	7-27-54
3+0	89.8	83.05	6.7	3+00	3+11.5 3+75.0	3+14.5 3+78.0	#1598 #1599	#1604 #1605	1215 Hamilton	1214 Alturas	7-27-54	7-27-54
4+0	89.8	83.15	6.6		4+41.5	4+44.5	#173		1133 Hamilton		9-13-54	
5+0	89.1	83.25	5.8		5+21.0	5+23.0						
6+0	89.4	83.35	6.0	5+99	6+31.7	6+16.7 6+57.6		6164		1120 Alturas		7-11-82
7+0	90.4	83.45	7.0		7+53.0 8+20.0	8+29.0	6394	#1982	1105 Hamilton	1108 Alturas	8-23-82	9-13-54
8+0	90.7	83.55	7.1		8+71.0	8+74.0	#1983	#1983	1101 Hamilton	1102 Alturas	9-29-54	9-13-54
9+0	90.9	83.65	7.2	9+00								
0+0	88.8	82.75	6.0	0+00 Existg MH	0+52.0	0+55.0	#1607	#1606	1301 Hamilton	1302 Alturas	7-27-54	7-27-54
1+0	90.4	82.85	7.6		1+12.0 1+70.0	1+15.0 1+73.0	#1553 #1554	#1558 #1559	1307 Hamilton	1308 Alturas	7-22-54	7-22-54
2+0	90.2	82.95	7.3		2+30.0 2+92.0	2+33.0 2+95.0	#1555 #1556	#1560 #1561	1321 Hamilton	1320 Alturas	7-22-54	7-22-54
3+0	90.1	83.05	7.0		3+46.5	3+49.5	#1557	#1562	1333 Hamilton	1332 Alturas	7-22-54	7-22-54
4+0	88.0	83.15	6.9		4+19.0 4+98.0	4+22.0						
5+0	87.6	83.25	4.3		5+77.0	5+80.0		#2982 #2987		1408 Alturas		12-13-54
6+0	87.4	83.35	4.0		6+23.5	6+26.5	#3985	#2986	1421 Hamilton	1422 Alturas	12-21-54	12-21-54
	87.3	83.40	5.9	6+48.5								

2003-00255 - 1129103-1127 E 31st STS - Wichita Exc - 4" PVC - 1TWIN CO, Newhouse trap, 2V45, shallow - 60'E of MH 5199 (5+39) city w/e repair - 4" Predco, 8' depth per city crew

2001-01178 - 514101-1234 E Alturas - Clearwater Exc - 4" SCH 40 - 6x4 Fernco pb clay 3' from main - 143' W of MH 0+00 (H43) Trap Installed, 1TWIN CO, Fernco to CI @ house

8-17-81 (Home)
 #1975 - Jap - 1202 Alturas - Home - 9-28-54 (20' W of RL)
 #1974 - 1201 Hamilton - 9-13-54 - Home Pkg
 #1977 - 1126 Alturas - 9-13-54 - Home Pkg
 #1980 - 1116 Alturas - Jap - 9-13-54 - Home Pkg
 #1981 - 1112 Alturas - Jap - 9-13-54 - Home Pkg
 #2131 - 1115 Hamilton - 9-29-54 - Home Pkg
 #2132 - 1101 Hamilton - 9-23-54 - Home Pkg
 4" SCH 40 - Fernco to clay - both ends - trap only
 #1976 - 1132 Alturas - Jap - Home - 9-13-54
 #1978 - Jap - 1120 Alturas - Home - 9-13-54
 #1979 - Jap - 1120 Alturas - Home - 9-13-54
 #1983 - Jap - 1105 Hamilton - 9-13-54
 #1972 - Jap - 1127 see below
 #1971 - Jap - 1121 Hamilton - 9-13-54
 #1973 - Jap - 1133 Hamilton - 9-13-54
 #2986 - Jap - 1415 Hamilton - 12-21-54 - Home Pkg
 #2987 - Jap - 1411 Hamilton - 12-21-54
 #2990 - Jap - 1412 Alturas - 12-21-54