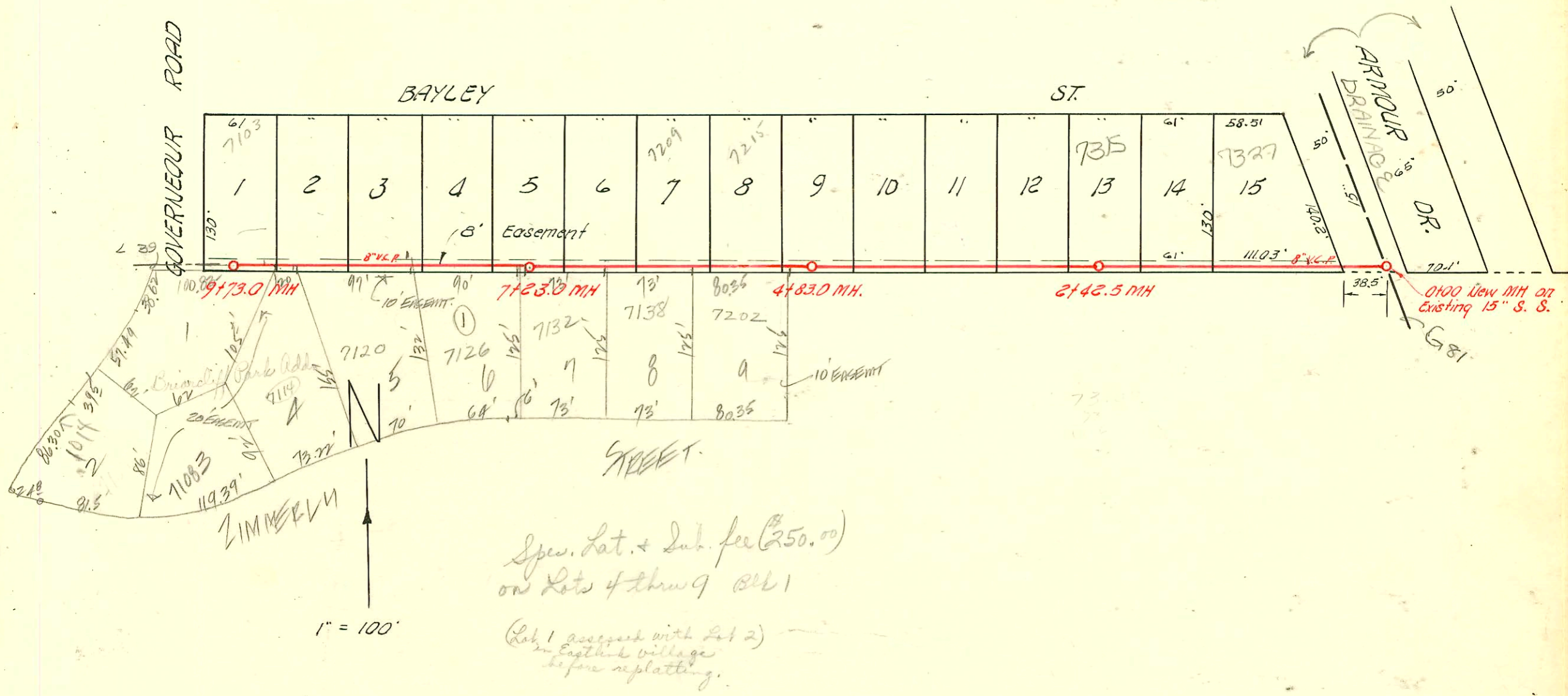


Rec. # 30759 \$250.00 Spec. Sub. + Sub. fee pd. - 7114 E. Zimmerly 3-31-69 Bruce Homes, Inc.
 Rec. # 38844 \$250.00 Spec. Sub. + Sub. fee pd. 7120 E. Zimmerly 8-4-69 Bruce Homes, Inc.
 Rec. # 130297 \$250.00 Spec. Sub. + Sub. fee pd. 7126 E. Zimmerly 7-3-72 Bruce Homes, Inc.
 Rec. # 136783 \$250.00 Spec. Sub. + Sub. fee pd. 7132 E. Zimmerly 9-12-72 Bruce Homes, Inc.



LAT. 6, SUB. 5, W. I. S.
 W. B. CARTER INC., JAN. 10, 1955
 BK. NO. K-15, PROJ. NO. C 24-59

CONSTRUCTION RECORD

SERVICE RECORD

STATION	ELEVATION		Depth	MANHOLE	4-INCH "Y" BRANCHES		No. of Permit		House Number		DATE OF PERMITS			
	Ground	Grade			North West	South East	North West	South East	North West	South East	North West	South East	North West	South East
Line #2 Continued	11+0	94.4	90.62	3.8										
	12+0	94.4	90.77	3.6										
					12+07.5			3071	3338 Silver			3-55		
					12+75.0									
	13+0	94.2	90.90	3.3	12+85.0									
		94.4	90.92	3.5				2000-02077	3340 R Silver	See Below	9-20-00			
		94.3	91.01	3.3	13+41.0			#3079			1-3-55			
Line #2-A	0+0	95.4	89.43	6.0	0+00 = (3+06.5 Line #2)									
					0+37.0			11675	613 W. 31st St. Co.			10-27-59		
		95.5	90.33	5.2	0+88.5									
Line #3	0+0	94.9	90.02	4.9	0+00 = 6+34.5 in Line #2	Y NORTH	Y SOUTH							
					0+16.5	0+19.5	#3126	#3127	623 Patterson	622 Patterson	1-7-55	1-7-55		
					0+76.5	0+79.5	#3125	#3128	616 Patterson	615 Patterson	1-7-55	1-7-55		
	1+0	95.1	90.42	4.7										
					1+38.0	1+41.0	#3124	#3129	609 R Patterson	610 Patterson	1-7-55	3-25-85		
	2+0	95.6	90.82	4.8										
					2+00.0	2+03.0	#3123	#3130	603 Patterson	604 Patterson	1-7-55	1-7-55		
		95.4	90.88	4.5	2+15.0									
Line #4	0+0	94.2	90.51	3.7	0+00 = 9+59 in Line #2									
					0+06.0	0+09.0	#4431	#4432	623 Patterson	622 Patterson	4-22-55	4-22-55		
					0+79.5	0+82.5	#4432	#4436	616 Patterson	615 Patterson	4-22-55	4-22-55		
	1+0	94.2	90.92	3.3										
					1+40.0	1+43.0	#4433	#4437	609 R Patterson	610 Patterson	4-22-55	4-22-55		
					1+98.0		#4434		603 Patterson		4-22-55			
	2+0	95.2	91.32	3.9										
		95.0	91.37	3.6	2+15.0				#4435	604 Patterson		4-22-55		
Line #5	0+0	94.4	91.00	3.4	0+00 = 12+85 in Line #2									
					0+22.0	0+25.0	#5920	#5922	623 Patterson	622 Patterson	8-5-55	8-5-55		
					0+80.0	0+83.0	#5921	#5923	616 Patterson	615 Patterson	8-5-55	8-5-55		
	1+0	94.6	91.15	3.5										
					1+38.0	1+41.0	#5928	#5924	610 Patterson	609 R Patterson	8-5-55	3-21-55		
					1+95.0	1+98.0	#5927	#5925	653 Patterson	603 Patterson	8-5-55	8-5-55		
	2+0	95.2	91.30	3.9										
		94.7	91.32	3.4	2+14.5									
	0+0	138.7	130.30	8.4	0+00 New MH	Y NORTH	Y SOUTH							
					0+65.0	0+68.0	#3271		7307 E. R. Bailey		9-24-48	1-28-55		
	1+0	140.7	130.70	10.0					7321 E. Bailey		1-28-55			
	2+0	143.9	131.10	12.8					7315 E. Bailey		1-28-55			
		144.8	131.26 out 135.00 in	13.5 out 9.8 in	2+42.5				7307 E. Bailey		1-28-55			
	3+0	146.0	135.24	10.8					7303 E. Bailey		1-28-55			
	4+0	147.5	135.64	11.9					7227 E. Bailey		1-28-55			
		149.6	135.96 out 140.00 in	13.6 out 9.6 in	4+83.0				7321 E. Bailey		1-28-55			
	5+0	150.0	140.08	9.9					7215 E. Bailey	7202 E. Zimmery	1-28-55	11-29-73		
					5+26.5	5+29.5	#3264	#4948	7209 E. Bailey	7138 E. Zimmery	1-28-55	7-19-71		
					5+88.0	5+91.0	#3263	#25673	7203 E. Bailey	7132 E. Zimmery	1-28-55			
	6+0	152.1	140.48	11.6					7203 E. Bailey	7132 E. Zimmery	1-28-55			
					6+52.0	6+55.0	#3262		7127 E. Bailey	7132 E. Zimmery	1-28-55	9-12-72		
		153.8	140.88	12.9					7127 E. Bailey		1-28-55			
		153.9	140.96	12.9	7+23.0				7121 E. Bailey	7124 E. Zimmery	1-28-55	7-17-72		
	8+0	152.5	141.28	11.2					7115 E. Bailey	7120 E. Zimmery	1-28-55	8-27-69		
					8+28.0	8+31.0	#3259	#15620	7114 E. Bailey	7114 E. Zimmery	1-28-55	4-1-69		
					8+89.5	8+92.5	#3258		7103 E. Bailey	7104 E. Zimmery	1-28-55	2-10-69		
	9+0	150.1	141.68	8.4					7103 E. Bailey	7104 E. Zimmery	1-28-55	2-10-69		
		148.7	141.96	6.7	9+73.0				7103 E. Bailey	7104 E. Zimmery	1-28-55	2-10-69		

Lat. 6, Submain 5, W. I. S.

Spec. Fee (Rev 130297) 250.00 Rec. 5-4-69 38844

Cost 220500 - Spec. fee lateral - Submain - 7138 E Zimmery - Lot 8 Od 6-27-71 \$250.00
 Rec 196489 - Spec. fee - Lat - Sub 7202 E Zimmery - Lot 9 Od 11-28-73 250.00
 #13315-610 W 32nd St. Lean Shallow 3-25-85 (1+570)
 2000-02077- 912000-3346 S Silverst - Wichita Exc - Orig Conn under 3340-4"sch40 17WIN CO, 2 KICKOUTS, 2H45