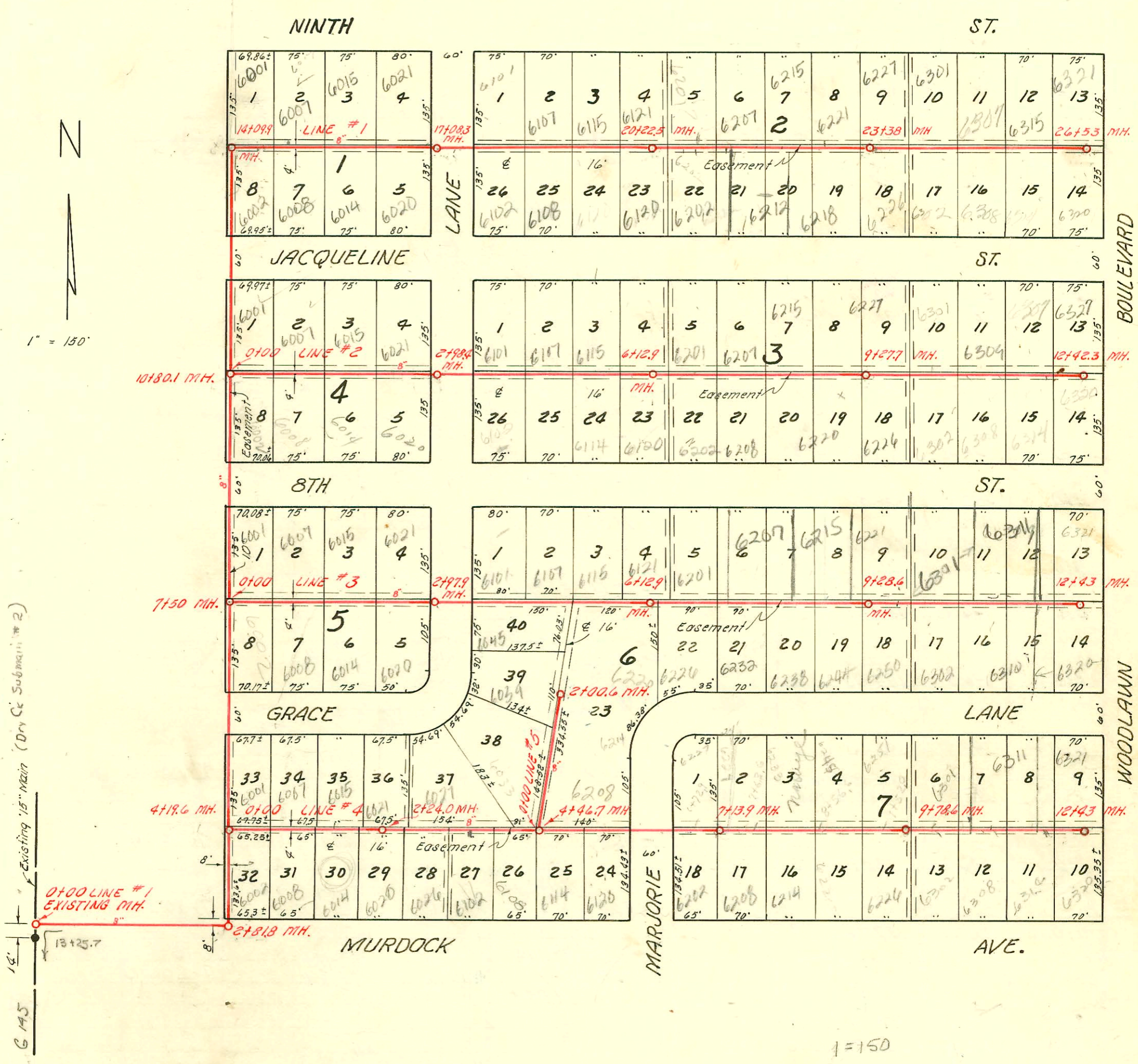


RECORD BOOK

Page 220



Note:
Construction Record for this project
booked on pages 195, 196 & 197.

Rec'd 36689 346320 E 8th St - Leidy - 2-5-57
 Rec'd 51664 246321 Jacqueline - Reiffel
 2003-01348 R Reddy Rootr 5119103 Predco by city 93'E of MH 9+28.6(10+21.6)
 3426 - Japn - 6301 E, 8th - Reiffel - 2/21/57 2V22, 1H45, 1H22, 1V45, 1V22, 1WYE Depth 13.8'
 2001-00279- 2/7/01- 6915 E Jacqueline - Boardman - 4" SCH 40 - CITY WYE REPAIR - 130' w of MH 2+98.4
 (1+68.4) 1TWINCO, 1H22, 1V45
 2001-00669- 3/27/01- 6121 E 9th St - Wichita Exc - 4" SCH 40 Donut 24.7' w of MH 20+22.3 (19+97.8) - 1TWINCO,
 1V22, 1H22, 1V45, Fernco to CI@ house

LAT. 36, D.C.S. No 2, S. S. No 12

W. B. CARTER

JUNE 30, 1954

BK. NO. JI. 69

PROJ. NO. C 24 - 22

CONSTRUCTION RECORD

SERVICE RECORD

STATION	ELEVATION		Depth	MANHOLE	4-INCH "Y" BRANCHES		No. of Permit		House Number		DATE OF PERMITS	
	Ground	Grade			North West	South East	North West	South East	North West	South East	North West	South East
6+0	201.3	188.56	12.7		5+31.1	5+28.1		#2119	6114 E. 8th			9-27-54
	201.6	188.61	13.0	6+12.9	5+63.5			C69285	6120 E. 8th			10-23-54
7+0	202.3	188.96	13.0		6+69.4	6+46.4		#2050	6201 B			7-16-54
8+0	203.5	189.36	14.1		7+44.3	7+41.3		#5268	6215			8-12-54
9+0	203.7	189.76	13.9		8+40.8			#3992	6221			3-28-54
	203.2	189.87	13.3	9+27.7	9+02.5			2002-01090 #1413	6230 E. 8th			4-16-54
10+0	202.3	190.16	12.1		9+77.3			2002-00347 #1410	6227 A			1-7-54
11+0	201.4	190.56	10.8		10+12.5	10+09.5		#2490	6301			9-20-56
					11+03.9	11+00.9		#2905	6301			10-26-56
					11+93.6	11+90.6		2785	6315			10-16-56
12+0	201.0	190.96	10.0						6320 B			3-19-57
	200.9	191.14	9.7	12+42.3		12+30.3			E. 8th			3-19-57
0+0	190.9	182.00	8.9	0+00 = 7+50.0 in Line #1	0+12.0			2001-00593 #11800	6001 R			4-17-51
1+0	191.8	182.40	9.4		0+29.6	0+26.6		#1531	6007			9-21-55
2+0	192.4	182.80	9.6		0+98.8	0+95.8		#3102	6007			3-15-51
3+0	193.2	183.19	10.0	2+97.9	1+77.7	1+74.7		#2724	6015			11-23-54
4+0	194.9	183.60	11.3		2+48.8	2+45.8		#4027	6014			3-31-55
5+0	196.3	184.00	12.3		3+82.4	3+79.4		#3221	6101 E. 8th			1-25-55
6+0	198.5	184.40	14.1		4+69.0	4+42.3		#2016	6107			9-15-54
7+0	198.8	184.45 out 14.4 in 11.8	14.4	6+12.9	5+39.6	5+32.5		#2000-00946	6220 R			4-19-50
8+0	200.1	187.34	12.8		6+04.0	6+55.0		#1941	6121			9-10-54
9+0	200.6	187.74	12.9		6+90.9	6+55.0		#1570	6201 R			10-27-56
10+0	201.3	188.14	13.2		7+85.0	7+45.7		2001-00748 #1385	6207			7-26-54
11+0	201.5	188.25	13.2	9+28.6	8+30.2	8+30.2		#3432	6244			7-15-55
12+0	201.5	188.25	13.2	9+28.6	8+72.0	8+84.8		#1572	6215			7-26-54
	201.3	188.14	13.2		9+50.9	9+50.9		#1573	6221			7-26-54
	201.5	188.25	13.2		9+68.0	9+68.0		2000-00475 #1417	6250 R			7-11-54
10+0	202.6	188.54	14.1		10+28.8	10+25.8		#272	6301			4-25-55
11+0	201.6	188.94	12.7		11+20.6	11+17.6		#271	6215			3-19-52
					11+95.5	11+95.5		#1410	6320			7-6-54
12+0	200.4	189.34	11.1		12+10.3	12+10.3		#20604	6321 R			3-28-51
	199.9	189.51	10.4	12+43.0				630	see next pg			4-25-56
0+0	188.1	178.00	10.1	0+00 = 4+19.6 in Line #1	0+18.7	0+23.7		2001-00526 #5839	6001 R			3-12-55
1+0	187.2	178.40	8.8		0+87.7	0+90.7		2001-00628 #3551	6007 R			3-21-55
					1+46.4	1+46.4		#4791	6008			3-16-55
					1+54.9							

This project continues on page 197

2001-00581 #2797 - Top - 6015 Grace Lane - Jack Dunham 5-3-55
 #4603 - Top - 6115 E. 8th - Jack Dunham 5-3-55
 #5839 - Top - 6007 Knox Lane - Dunham 5-3-55
 #6503 - Top - 6014 E. 8th - Dunham 5-3-55
 #2166 - Top - 6320 E. 8th - Dunham 5-3-55
 #1385 - Top - 6282 Jacquette - 7-9-56 Dale's Sewer Ser.
 2001-00626 #3426 - Top - 6301 E. 8th R/12-28-56 - Reynolds 3/21/61 - ROTO-ROOTER 4" SCH 40 ITWINCO
 3425 - Top - 6321 Jacquette - 12-28-56 Reynolds
 #4267 - 6307 E. 8th - 6-17-57 - Reynolds
 #31601 - Rodgett - Tied back to wye 55' W of MH 2+24 (1+69) 4" SCH 40

2002-01090-4/16/02-6220 E 8th- Redd Rooter- Replace exist svc line- ferro to clay- 5' from main
1V45, 1TWIN CO, ferro @ house, shallow, 4" 40 PVC

2002-00347-2/8/02-6227 E Jacqueline- Rob Rooter- city wye repair- 4" Predco (on msmt) 1V22, 1V45,
2 Ferro, 2V22, 1TWIN CO, 1TWIN CO, 4" E SDR17 - pipe burst replacement

2001-00913-4/17/01-6001 E 8th St N- Superior Pkg- 4" SCH40 - 2 Ferro to Orangeburg 40 Riser only

2001-00553-3/15/01-6008 E Grace Ln- Padgett Exc- 4" SCH40 wye w/donut 92' E of MH 0100 (0+92) 1TWIN CO, 1V22,
1V45, 2H45

2000-00475-6250 E Marjorie Ln- Wichita Exc- 4" SCH40 - Tied to existing building SWR - 1TWIN CO, 2H22,
2 KICKOUTS, 1V45, 1H45

2001-00604-3/20/01-6321 E 8th St N- Roto- Pipe Bursting Repl- 4" SDR17 - wye conn w/donut- 2V22, 2H22 33' w/donut 12+43 (12+10)

2001-00526-3/12/01-6001 E Grace Ln- Padgett EX- 4" SCH40 - Predco 18.7' E of MH 0100 (0+18.7) 1TWIN CO, 2V22, 1H22

2001-00628-3/21/01-6007 E Grace Ln- Padgett EX- 4" SCH40 - CITY WYE REP- 88' E of MH 0100 (0+88) 1TWIN CO, 1V45, 2H45