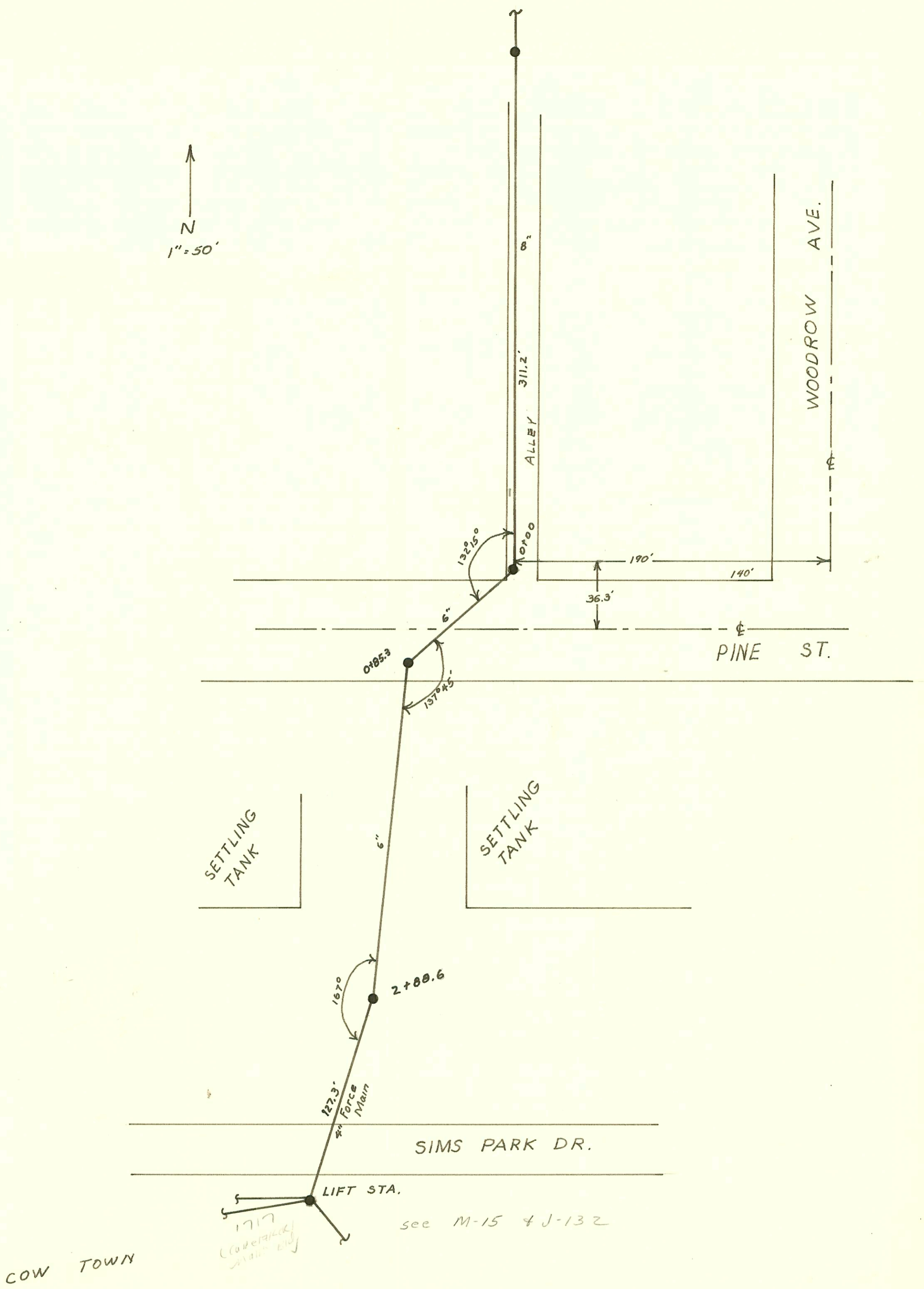


COW TOWN SANITARY SEWER  
 W. B. CARTER INC., NOV. 16, 1954  
 BK. K-21, PRIVATE JOB



COW TOWN

1717  
COW TOWN  
SANITARY SEWER

see M-15 & J-132

COW TOWN SANITARY SEWER  
W.B. CARTER 1954  
AS MEASURED BY SEWER  
MAINTENANCE - 1985

CONSTRUCTION RECORD

SERVICE RECORD

Line # 4  
Continued

STATION	ELEVATION		Depth	MANHOLE	4-INCH "Y" BRANCHES		No. of Permit		House Number		DATE OF PERMITS			
	Ground	Grade			North West	South East	North West	South East	North West	South East	North West	South East	North West	South East
2+0	188.6	178.80	9.8		2+16.5	2+13.5	#2129	96 #6543	6001	6020 R	9-28-54	14896 9-21-55		
	189.3	178.89 out 181.99 in	10.4 7.3	2+24.0	4" sch 40 2+78.9		#479	44-5909	6002 R	S. Murdock		4-26-55 5-16-55		
					2+93.1		#2903		6027	Sim Park	12-8-54			
3+0	191.4	182.30	9.1			3+44.0		#4485	6105	Murdock		4-27-55		
4+0	192.8	182.70	10.1			4+09.4		2082 #5040	6109 R	Murdock		10-10-55 8-1-55		
	193.5	182.89 out 185.99 in	10.6 7.5	4+46.7	4+72.4	4+75.4		#3778	6114 E	Murdock		3-24-55		
5+0	194.3	184.20	8.1			5+44.4								
6+0	197.2	184.60	10.6		6+72.9	6+75.9	#1137	#4792	6007	Mayne	6-18-56	5-16-55		
7+0	198.0	187.00	11.0			7+13.9								
	197.8	187.05	10.7	7+13.9	4" PESDR17 7+45.6	7+45.8	#3953	2002-02926	6208 R	see below		10-28-55 3-18-55		
					7+63.6		#7012		623	Mayne	12-7-55			
8+0	199.6	187.40	12.2			8+11.6		#2275	6245	Mayne	7-22-54	10-15-55		
					8+56.6	8+93.0	#1550	#8327	6208 R	Murdock		5-23-55 7-22-54		
					9+52.0	9+64.6	#6373	#1670	6256 R	Murdock	9-13-55	7-7-55 1-27-54		
10+0	200.5	188.11	12.4	9+78.6		10+22.0	10+25.0	#529	#21764	6301	R	2-18-56 1-6-56	10-24-55 1-6-56	
	200.4	188.20	12.2					#1191	#1196	6301	R			
11+0	199.7	188.60	11.1		11+07.7	11+10.7	#4172	#7195	6311	50010	6308	3-8-55	1-6-56	
					11+96.8	11+99.8	#3407	#1192	6314 R	6314 R	6-22-55	1-6-56		
12+0	198.4	189.00	9.4					#3777		CO tied to clay Agpl 30' upper end				
	198.2	189.17	9.0	12+43.0										
					Y WEST	Y EAST								
0+0	193.5	184.00	9.5	0+00 = 4+46.7 in Line #4		0+41.0	0+38.0	#7515	6033			7-22-54		
								1551						
1+0	194.4	184.40	10.0			1+41.0		#6322	6214	Marjorie		2-26-59		
						1+88.8		#2549	6031	Brace	11-10-54			
2+0	196.0	184.80	11.2	2+00.6										
0+0	122.5	112.20	8.3	0+00 Exist'g MH.										
	113.7	112.50	1.2	0+50 Begin Pump Sta.										
		106.72		Bottom of Lift Sta. MH.										
		113.34		Top of Brick Work.										
	113.7	109.74	1.4	0+56 End Pump Sta.										
1+0	113.6	109.86	5.7											
2+0	112.6	109.98	2.6	2+01.0										

Line # 5

CON TOWN SANITARY SEWER

No Wyes

2002-02926 - 10/28/02 - 6208 E. Murdock - Rot - Pipeburst replacement - PESDR17 - City work, repair 31.9' E of MH 7+13.9  
(7+45.8) Predco Saddle, 1V45 4" 40 PVC, 3V22, 1TWIN CO  
99-00837 10-4-99 1717 SIM PARK DR (1871 Sim Park Ln) Conetakes (Main Bldg -

Tap # 4175 - 6311 Marjorie Lane 4-11-55 Reynolds Bldg  
# 6000 - Tap 6120 E. Murdock Durham Bldg Co - 9-21-55  
# 7173 - Tap was made in w. city - 6320 E. Murdock Reynolds - 1-6-56 (12+36)  
93-5248-7 31143-6 311 E. Marjorie - East Line Sta. 11+61.6 up sch 40  
93-4644-7 3-8-93 6311 E. Marjorie - West Line Sta. 10+95.6 4" sch 40

6

