

# 2625 - Jap - 3810 Pawnee - Cherry Alley - 11-15-54  
 # 2617 - Jap - 3852 Pawnee - Cherry Alley - 11-15-54  
 # 2612 - Jap - 3926 E Pawnee - Cherry Alley - MAY  
 # 2345 - Jap - 2345 Sec. Washington Blvd - Cherry - 11-15-54

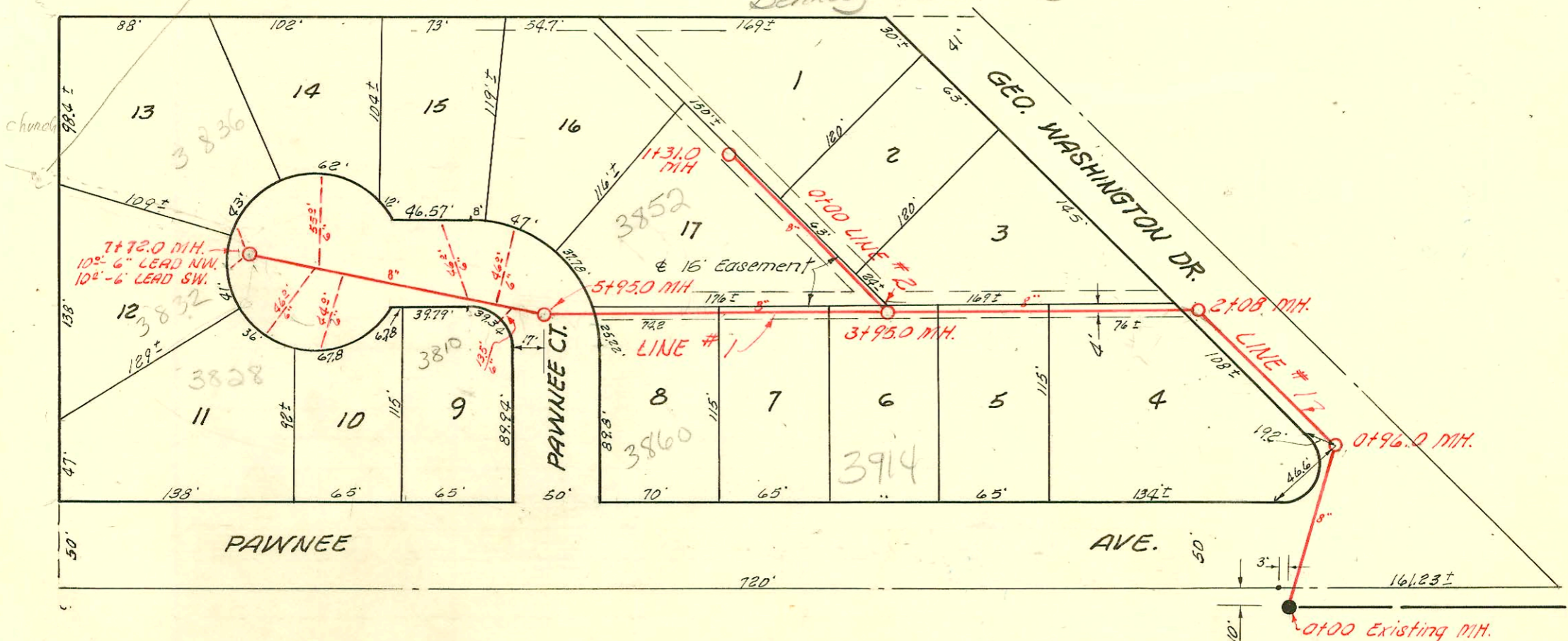
\* 16665 deal off - 1900 S. Martinson - Thompson Alley. 2-18-63

**LAT. 5, DIST. E, S. S. 21**

W. B. CARTER AUG. 27, 1954

BK. NO. K-15, PROJ. NO. C24-47

3700 E. Pawnee (the church)  
 Found MH on Field inspection & it  
 seem the church is tied to it.  
 Behnooz Rahbar (12-29-89)



Note: 6" x" Branches installed on this project.

**LAT. 4, SUB. 6, W. I. S.**

W. B. CARTER AUG. 30, 1954

BK. K-17 PROJ. NO. C 24 - 30

