

LAT. 10, S. S. N° 12

W. B. CARTER

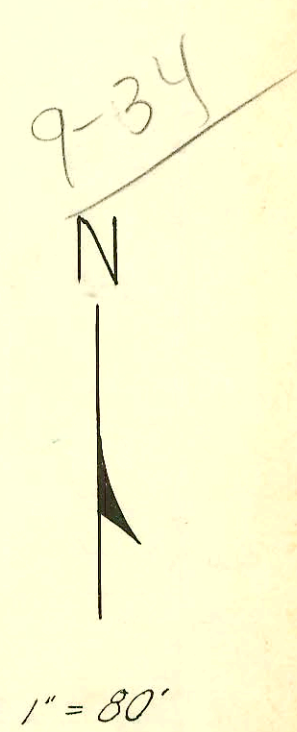
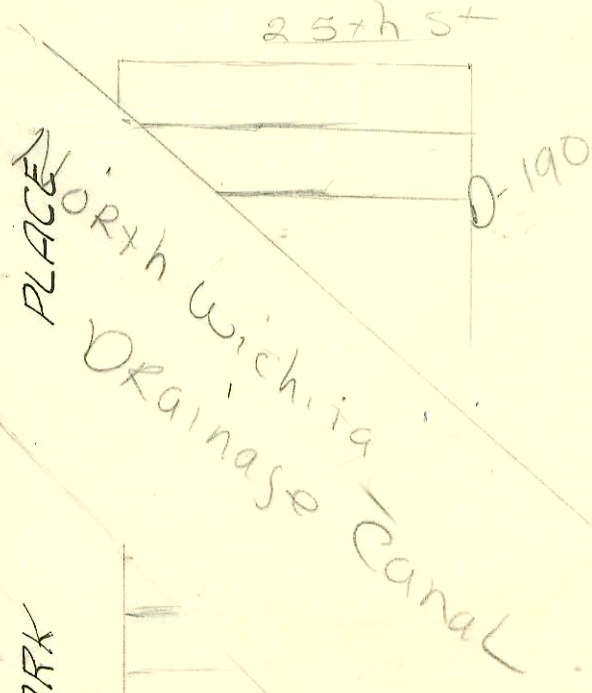
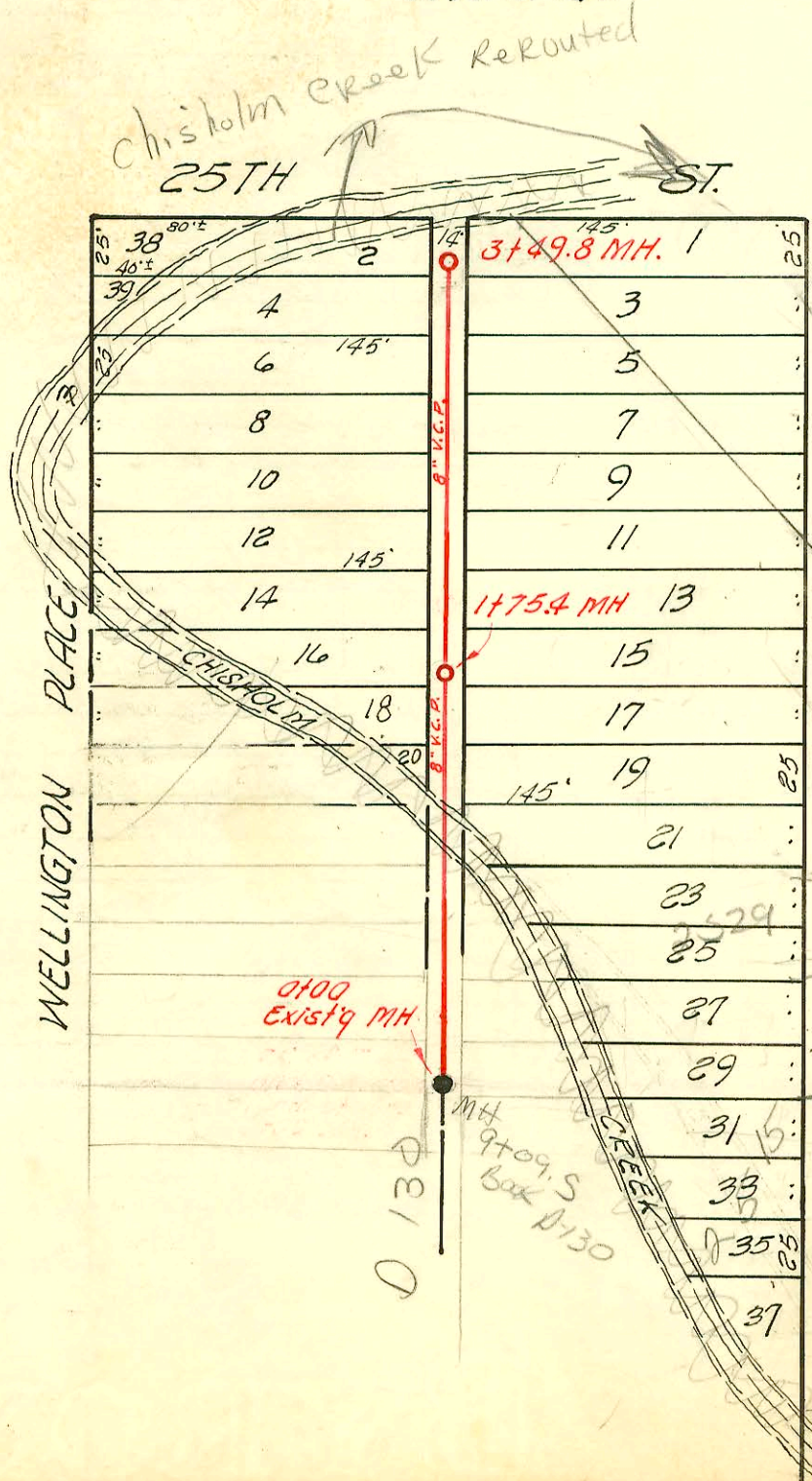
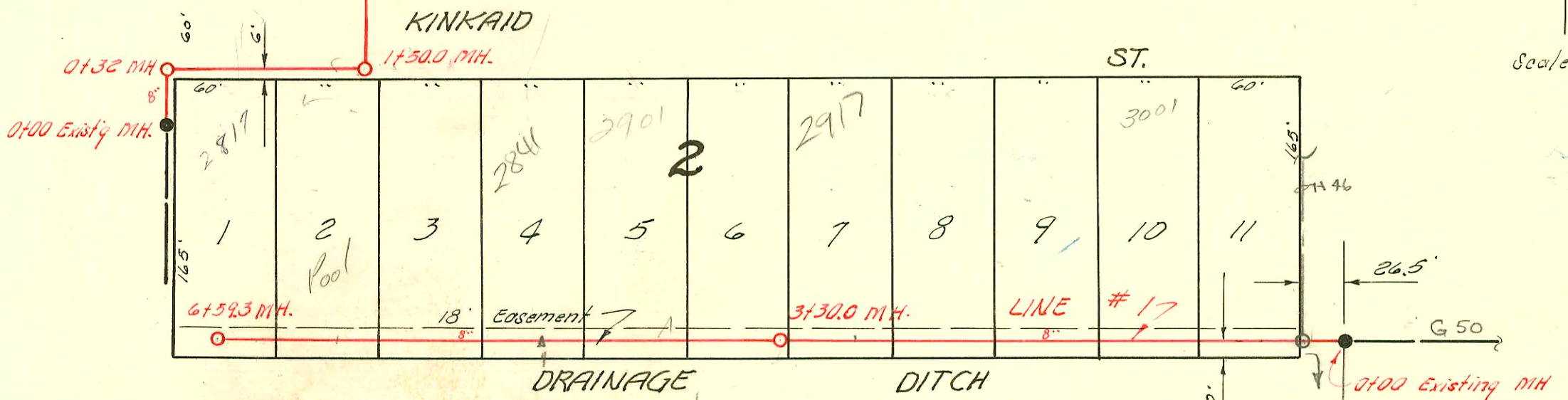
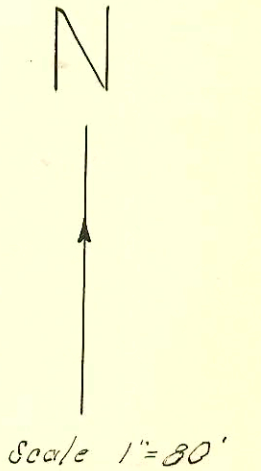
SEPT. 23, 1954

BK. K-15

PROJ. NO. C24-10

NOTE:

4" wye branches installed on this project.



LAT. 16, DIST. T, S. S. 20

UTILITY CONT. INC.

MARCH 25, 1955

BK. NO. JT 65,

PROJ. NO. C 24-60

CONSTRUCTION RECORD

SERVICE RECORD

STATION	ELEVATION		Depth	MANHOLE	4-INCH "Y" BRANCHES		No. of Permit		House Number		DATE OF PERMITS	
	Ground	Grade			North West	South East	North West	South East	North West	South East	North West	South East
Line #1 0+0	99.0	91.26	7.7	0+00 Exist'g MH.					3009 KIRKLAND		12-27-54	
1+0	98.4	91.36	7.0		0+47.0		#3032		3001 KIRKLAND		12-27-54	
2+0	98.3	91.46	6.8		1+06.0 1+69.0		#3033 #3034		2933 KIRKLAND		12-27-54	
3+0	98.5	91.56	6.9		2+26.0 2+91.0		#3035 2000-02627 #3036		2925 KIRKLAND 2919 KIRKLAND	Repl all but lower 2'	12-27-54 11-5-54 12-27-54	
4+0	98.7	91.59	7.1	3+30.0	3+48.0		#3037		2909 KIRKLAND		12-27-54	
5+0	98.7	91.66	7.0		4+10.0 4+69.5		#3038 2000-02627 #3039		2901 KIRKLAND 2841 KIRKLAND	R See below	12-27-54 11-30-54 12-27-54	
6+0	99.1	91.76	7.3		5+29.0 5+89.3		#3040 #3041		2933 KIRKLAND 2825 KIRKLAND		12-27-54 12-27-54	
7+0	98.9	91.86	7.0		6+48.7							
8+0	98.7	91.92	6.8	6+59.3								
Line #2 0+0	99.0	92.57	6.4	0+00 Exist'g MH	WEST	EAST						
1+0	98.4	92.77	5.6									
2+0	98.0	92.97	5.0		2+23.0	2+20.0	#3083 #3081		2820R KIRKLAND		10-5-51 12-27-54	5-17-55
3+0	98.0	93.07	4.9		2+86.0	2+83.0	#497	4818	2152 Valutec	2157	3-1-56	5-17-55
4+0	97.3	93.19	4.1		3+53.0	3+50.0	#3084		2144 Valutec		1-4-55	
5+0	97.1	93.27	3.8		4+18.0	4+15.0	#3085	17582	2138 Valutec	2133 SEB	1-4-55	5-6-87
6+0	97.8	93.37	4.4		4+78.0	4+75.0	#3086	16113 4819	2106 Valutec	2107SK SEB	1-4-55	11896 5-17-55
7+0	97.7	93.47	4.2		5+42.0	5+45.0	#3087	20191 45593	2126 Valutec	2121-R SEB	1-4-55	7-11-88 5-17-55
8+0	97.8	93.37	4.4		6+13.5		#3088		2114 Valutec		1-4-55	
9+0	97.8	93.37	4.4		6+19.5		#3090		2115 SEB		1-4-55	
10+0	97.8	93.37	4.4		6+79.5		#654		2108 Valutec		9-23-55	
11+0	97.7	93.47	4.2		6+91.5		#4820		2107 SEB		5-17-55	
12+0	97.7	93.47	4.2		7+54.5		1048	7474	2102 Valutec		6-8-56	
13+0	98.1	93.54	4.6	7+70.0			4827		2105 SEB		2-15-53 5-17-55	
14+0	124.1	118.20	5.9	0+00 Exist'g MH.	WEST	EAST						
15+0	123.7	118.30	5.4		0+29.0	0+32.0						
16+0	123.7	118.30	5.4		0+95.4	0+68.0	#4113		2529-3133-55 B.B. Place		4-7-55	
17+0	123.9	118.38	5.5	1+75.4	1+34.6	1+28.3	#4114		2537-3941-43 B.B. Place		4-7-55	
18+0	123.9	118.38	5.5	1+75.4	1+62.6	1+49.5	#4115		2545-4749-51 B.B. Place		4-7-55	
19+0	124.0	118.50	5.5		2+00.6		#4116		2552-55-59-57 B.B. Place		4-7-55	
20+0	124.0	118.50	5.5		2+13.6		#4110		2549-46-47-50 Burlington		4-7-55	
21+0	124.0	118.50	5.5		2+37.8	2+40.8	#4111		2552-54-56-58 Burlington		4-7-55	
22+0	124.0	118.50	5.5		2+96.0		#4112		2556-59-61-66 Burlington		4-7-55	
23+0	124.0	118.55	5.5	3+49.8	3+35.0							

4" W/455

#3089 - Sup - 2133 S. Erie - Kirkside - 1-4-55
 #7387 - Sup - 2120 S. Erie - Al Harrison Co. - 2-21-57
 #2465 - Sup - Daleo 2817 - Kirkside - 9-20-57 (also see 5113)
 Repair 6018102 Redd - 4" PVC, ITW/CO, 1H22, 1H45
 #4907 - Sup - 2519 B.B. Place - 7-17-57

Rep-2000-02627-11/30/00-Betzen-4"sch40
 ITW/CO, 1U22, 1U45, 1H22, 1H45-2 Fernco to
 clay tied into house line