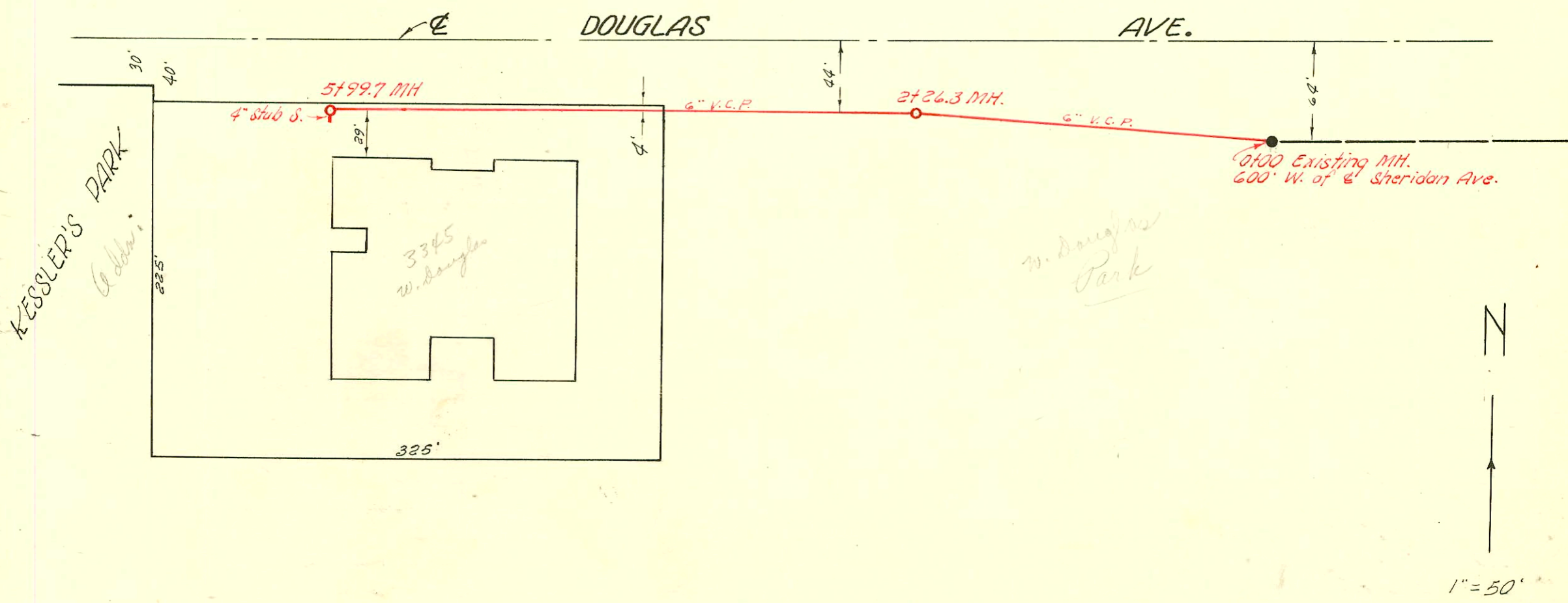


#4746 Tap - 1717 Woodrow Ct - Justice 7-23-57

**LAT. 6, DIST. R, S. S. NO. 20**  
 W. B. CARTER INC. NOV. 17, 1954  
 BK. NO. K-15 PROJ. NO. C 24-40



**WEST ARMORY SAN. SEWER**  
 W. B. CARTER INC. NOV. 17, 1954  
 BK. K-15 PRIVATE CONTRACT

CONSTRUCTION RECORD

SERVICE RECORD

STATION	ELEVATION		Depth	MANHOLE	4-INCH "Y" BRANCHES		No. of Permit		House Number		DATE OF PERMITS	
	Ground	Grade			North West	South East	North West	South East	North West	South East	North West	South East
Line # 5 0+00	94.3	91.00	5.3	0+00=0+00 in Line # 4			#5989	2952	2361 S Rivers	2402 E Poplar	8-11-55	11-2-56
1+00	96.7 96.5	91.10 91.13 out 91.23 in	5.6 5.4 5.3	1+27.0								
	96.3	91.29	5.0	1+91.0	6" stub SE.		#5652 #7142		2373 S Rivers	2374 E Poplar		7-18-55 12-30-55
Line # 5-A 0+00	96.5	91.23	5.3	0+00 = 1+27.0 in Line # 5								
	96.3	91.30	5.0	0+70.0	6" stub NE		#5651 #5650		2367 S Rivers	2368 E Poplar		7-18-55 7-18-55
Line # 6 0+00	96.5	90.94	5.6	0+00 Exist'g MH	WEST 0+67.0	EAST 0+70.0	#1206	#1208 2002- 02272	2317 S Rivers	2320 E Poplar	6-21-56	6-21-56
1+00	96.6	91.04	5.6		4" PVC Saddle 1+09		#1207		2321 S Rivers	2322 E Poplar		
2+00	97.2	91.14	6.2		1+26.0						6-21-56	
					2+46.0							
					2+74.0							
3+00	97.3	91.24	6.1		3+07.0		#2911		2323 S Rivers		10-26-56	
	97.4	91.26	6.1	3+18.5 2 46.0 72.5								
					4" wyes							
0+0	124.3	115.15	9.2	0+00 Exist'g MH	Y NORTH	Y SOUTH						
1+0	119.9	115.25	4.7		1+09.3	1+29.2	#2813	06978	1631 Rivers	1620-22 Willett N.	12-6-54	8-22-78
	119.1	115.30	3.8	1+49.8	4" stub NW 4" stub SW							
<p>2002-02272 2320a 2320 Poplar - Bob Scott - Replace svc line (NO original record of connection)                  4" PVC Saddle 109' S of MH 0+00 (1+09) LTWIN CO, 1V45, 1H45, tied 7' from main. Tied to 4" PVC PIPE</p>												
West Armory San. Sewer	0+0	117.1	113.61	3.5	0+00 Exist'g MH							
	1+0	117.3	113.81	3.5								
	2+0	116.0	114.01	2.0								
		116.2	114.06	2.1	2+26.3		3406.9	063468	3309 S Douglas		10-12-77	
	3+0	117.2	114.21	3.0			Armory #24143-3345		W. Douglas		11-5-54	
	4+0	118.4	114.41	4.0					W. B. Carter Const. Co. Inc.			
	5+0	119.5	114.61	4.9								
		119.7	114.80	4.9	5+99.7	4" stub S.						

Lat. 6, Dist. R, SS. #20

West Armory San. Sewer

#2912 - Top - Dalia Sewer Serv. - 2332 S. Grove - 10-26-56  
 #2910 - Top - Dalia Sewer Serv. - 2341 S. Poplar - 10-26-56