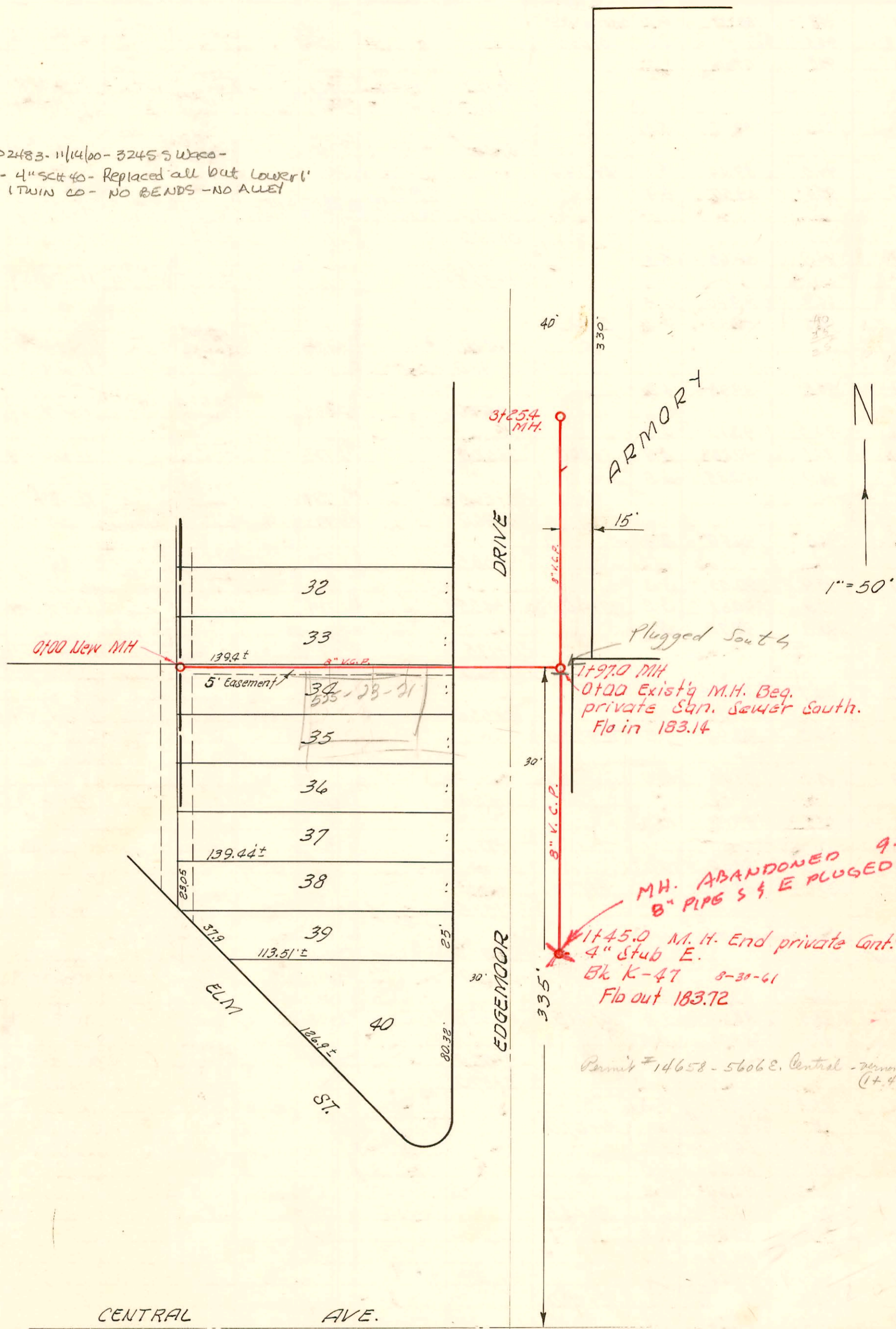


Rep-2000-02483-11/14/00-32455 Wages-
Wichita Exc- 4" S&T 40- Replaced all but lower 1'
1-Way CO, 1-TWIN CO- NO BENDS -NO ALLET



M.H. ABANDONED 9-28-1984
8" PIPE S & E PLUGGED
1145.0 M.H. End private cont.
4" stub E.
Bk K-47 8-30-61
Flo out 183.72

Permit #14658-5606 E. Central - Renew App'd 7-12-61
(1+45" stubs.)

EAST ARMORY SAN. SEWER

W. B. CARTER INC., DEC. 3, 1954

BK. NO. K-16, PRIVATE CONTRACT
Grades Bk 07-64

