

2002-01378-5/16/02 3221 Oak - Wichita Exc -
 4" PVC 4" Wye repair 52' S of MH at 59.4 (3+11.4)
 Replaced entire line - 4" twin CO @ house, 4" full
 shallow - no bends, no alley

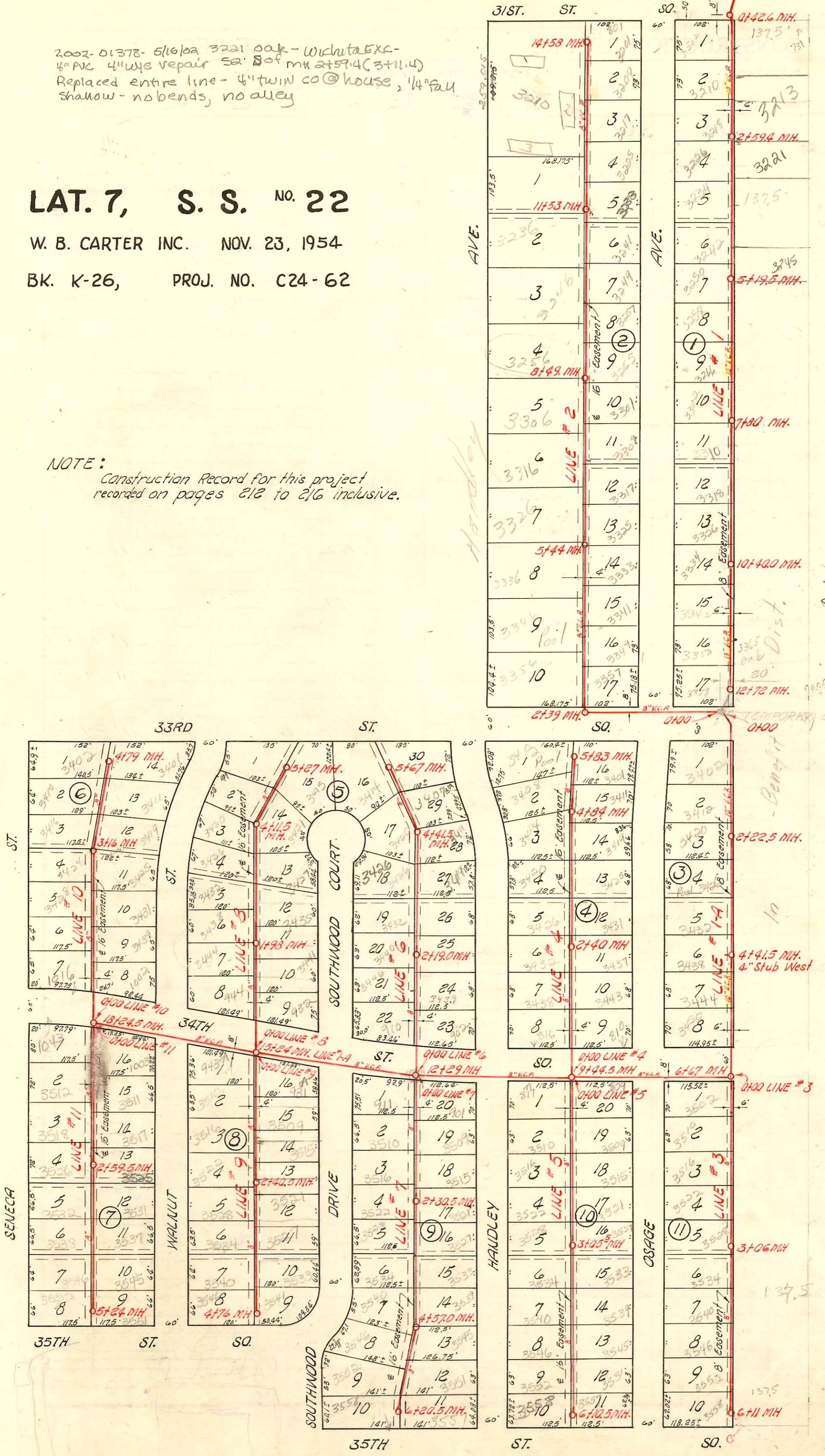
LAT. 7, S. S. NO. 22

W. B. CARTER INC. NOV. 23, 1954

BK. K-26, PROJ. NO. C24-62

NOTE: Construction Record for this project recorded on pages 212 to 216 inclusive.

Existing 36" San. Sewer → 4100 Existing MH →



6026 Enterprise Blvd 3612 S. Union - all work for 12-58
 6027 S. Enterprise Blvd 3612 S. Union - all work for 12-58
 # 14325 Top 701 W. 33rd St. Lane Archie Pkg. 6-21-61 (MH to 6711)
 # C53741-700 W. 35th St. Lane Archie Pkg. 9/13/76

CONSTRUCTION RECORD

SERVICE RECORD

STATION	ELEVATION		Depth	MANHOLE	4-INCH "Y" BRANCHES		No. of Permit		House Number		DATE OF PERMITS			
	Ground	Grade			North West	South East	North West	South East	North West	South East	North West	South East	North West	South East
0+0	94.9	88.95'	6.0	0+00 Exist'g MH.										
	95.5	89.01' out 89.11' in	6.5 6.4	0+42.6										
1+0	95.5	89.20	6.3											
					1+17.0	4" SCH 40 CO	#2761	2001-0057	3202 S	331 R	11-24-54	4-12-01		
					1+41.5	1+14.0	90-19377	3056	3210 S	312 S	11-24-54	1-13-65		
2+0	94.6	89.35	5.2				#2763		3218 S		11-24-54			
	94.5	89.44	5.1	2+59.4										
3+0	95.4	89.50'	5.9				#2764	2002-01378	3226 S	3221 S	11-24-54	5-16-02		
					3+03.0	4" PVC 40 City Water Rep	2765		3234 S		11-24-54			
					3+78.0									
4+0	94.9	89.65	5.3				#2766	2001-01665	3242 S	R Soil Pipe EXT - Repl entire line	11-24-54	7-9-01		
					4+56.5	4" SCH 40 (4+42)								
5+0	94.3	89.80	4.5				#2767		3250 S		11-24-54			
	94.3	89.83	4.4	5+19.5			#2768		3258 S		11-24-54			
6+0	94.8	89.95	4.9				#2769		3266 S		11-24-54			
7+0	94.3	90.10	4.2				#2770		3302 S		11-24-54	4-8-76		
	94.1	90.22	3.9	7+80.0	4" PVC 40									
8+0	94.0	90.25	3.8				#2771		3310 S		11-24-54			
							#2772		3318 S		11-24-54			
9+0	94.3	90.40	3.9				#2773		3326 S		11-24-54			
10+0	93.9	90.55	3.3				#2774		3334 S		11-24-54			
	93.8	90.61	3.2	10+40.0										
11+0	93.8	90.70	3.1				#2775	2005-01665	3342 S		11-24-54	7-9-01		
							#2776		3350 S		11-24-54			
12+0	94.7	90.85	3.9				#2777	19291	3358 S	3315 S	11-24-54	11-13-86		
	94.2	90.95	3.2	12+72.0	12+40									
Line 1-A 0+0	93.7	83.00	10.7	0+00 Temp. Lift MH			#2689		3402 S		11-23-59			
1+0	93.5	83.15	10.3				#2690		3412 S		11-23-59			
2+0	93.3	83.30	10.0				#2691		3420 S		11-23-59			
	93.2	83.33	9.9	2+22.5										
3+0	93.2	83.45	9.8				#2696		3426 S		11-23-59			
							#2697		3432 S		11-23-59			
4+0	93.4	83.60	9.8				#2698		3438 S		11-23-59			
	93.5	83.66	9.8	4+41.5	4" stub w.									
5+0	93.7	83.75	10.0				#2699		3444 S		11-23-59			
							#2700		3450 S		11-23-59			
6+0	93.2	83.90	9.3											
	93.1	84.00 out 84.17 in	9.1 8.9	6+67.0										
7+0	92.7	84.24	8.5											
8+0	91.2	84.44	7.0											
9+0	92.8	84.64	8.2											
	92.8	84.73	8.1	9+44.5										
10+0	92.8	84.84	8.0											
11+0	92.6	85.04	7.6											
12+0	92.6	85.24	7.4											
	92.7	85.30 out 85.40 in	7.2 7.3	12+29.0										
13+0	92.6	85.54	7.1											
14+0	93.1	85.74	7.4											
15+0	92.8	85.94	6.9											
	92.8	85.99	6.8	15+24.0										
16+0	92.4	86.15	6.2											
17+0	92.6	86.35	6.3											
18+0	93.0	86.55	6.8											
	93.6	86.60	7.0	18+24.5										

Note: Record Construction for this project continues on page 213

- #1885 - Tap - 3261 S Oak - Creekside Blkby - 8-7-56
- #2061 - Tap - 3229 S Oak - Creekside Blkby - 8-21-56
- #3448 - Tap - 3301 S Oak - Creekside Blkby - 1-2-57
- #3449 - Tap - 3253 S Oak - " " - 11-2-57
- #3450 - Tap - 3245 S " " - 11-9-57
- #3451 - Tap - 3242 S Oak - Creekside Blkby - 1-25-57
- #3452 - Tap - 3309 S Oak - Al Henning - 10-22-57
- #3453 - Tap - 3317 S Oak - Creekside Blkby - 12-23-57
- #3454 - Tap - 3305 S Oak - Creekside Blkby - 7-15-58
- #17658 - Tap - 2122 S - 701 W. 33rd St. - C. E. Redmond Contractors - 8-11-58
- #7772 - Tap - 3333 S Oak - C. E. Brodie - 8-13-58
- #7773 - Tap - 3341 S Oak - C. E. Brodie - 8-13-58
- #7774 - Tap - 3349 S Oak - C. E. Brodie - 8-13-58
- #7775 - Tap - 3257 S Oak - C. E. Brodie - 8-13-58
- #437 - Tap - 3612 S Oak - C. E. Brodie - 8-13-58
- #B5872 - Tap - 3365 S Oak - Gen. Driffen - 6-22-66 (11+88.4)
- 1873 - 3349 S Oak - J. C. Sowers (10+64.0)