

2002-01378-5/16/02 3221 Oak - Wichita Exc -
 4" PVC 4" Wye repair 52' S of MH at 59.4 (3+11.4)
 Replaced entire line - 4" twin co @ house, 4" full
 shallow - no bends, no alley

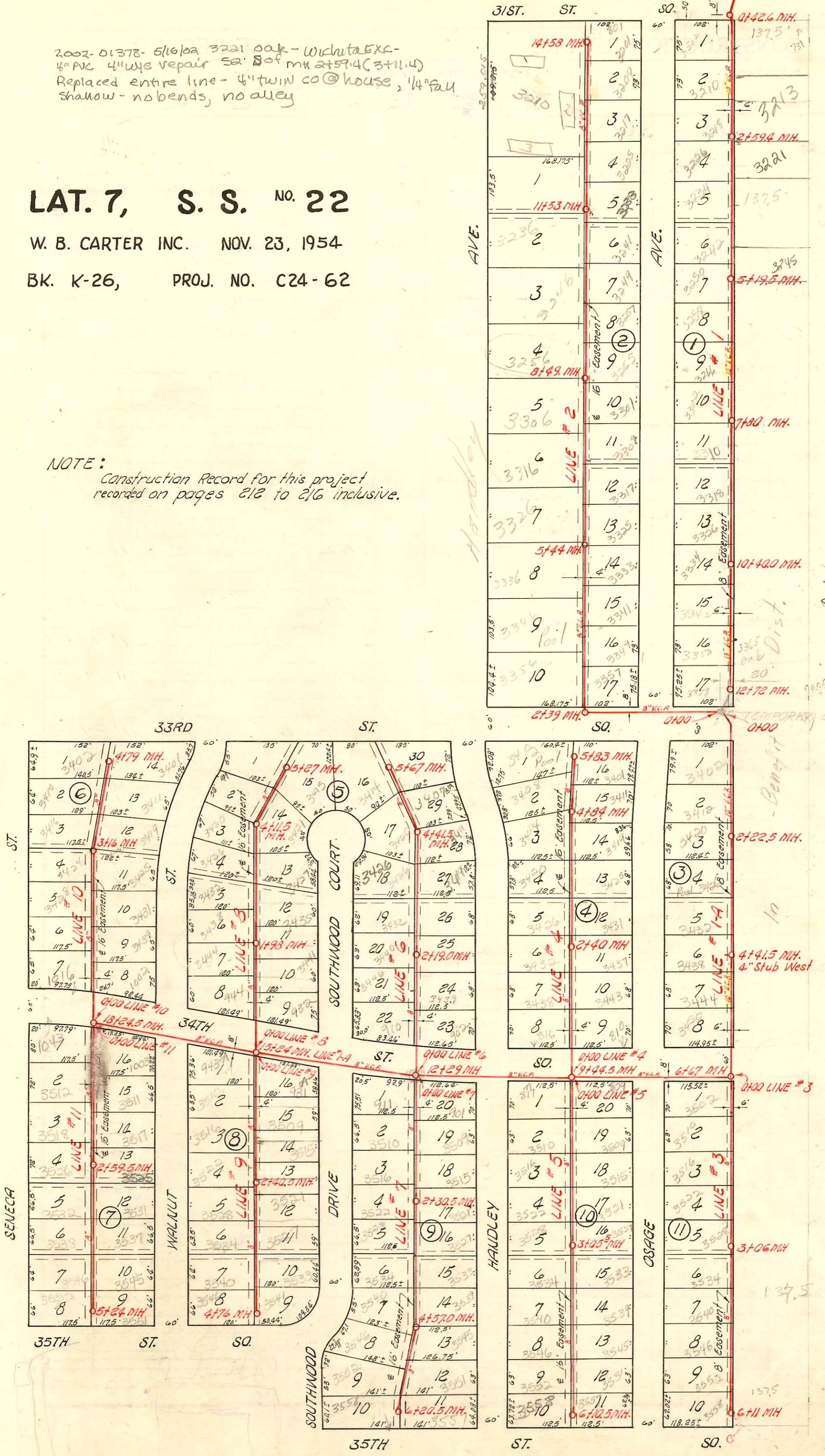
LAT. 7, S. S. NO. 22

W. B. CARTER INC. NOV. 23, 1954

BK. K-26, PROJ. NO. C24-62

NOTE: Construction Record for this project
 recorded on pages 212 to 216 inclusive.

Existing 36" San. Sewer → 4100 Existing MH →



6026 Enterprise Blvd 3612 S. Union - all work for 12-58
 6027 Enterprise Blvd 3612 S. Union - all work for 12-58
 #14325 Top 701 W. 33rd St. Lane Archie Pkg. 6-21-61 (MH to 6711)
 #53741-700 W. 35th St. Lane Archie Pkg. 9/13/76

CONSTRUCTION RECORD

SERVICE RECORD

Line # 2

STATION	ELEVATION		Depth	MANHOLE	4-INCH "Y" BRANCHES		No. of Permit		House Number		DATE OF PERMITS	
	Ground	Grade			West	East	North West	South East	North West	South East	North West	South East
0+0	93.2	83.00	10.2	0+00 Temp. Lift MH								
1+0	93.6	83.40	10.2									
2+0	93.7 93.6	83.80 84.01 out 84.11 in	9.9 9.6 9.5	2+39.0	4" 40 PVC 2+70.0		2087221 #2768		3357 R Orange	See next	4-29-02 11-24-54	
3+0	93.6	84.30	9.3		2+91.0		6674		3356 S Hardley		4-16-58	
4+0	93.7	84.70	9.0		3+36.0		8731 #2759		3349 S Orange		7-18-83 11-24-54	
5+0	94.0 94.1	85.10 85.30	8.9 8.8	5+44.0	4+11.0 4+90.0		01017 #2758 #4601 B3087		3341 S Orange 3336 S Orange		8-19-80 11-24-54 4-12-65 11-24-54	
6+0	94.2	85.50	8.7		5+52.5 5+95.0		#2756 B1073		3325 S Orange 3326 S Hardley		11-24-54 3-25-64	
7+0	93.8	85.90	7.9		6+24.5		#4091 2755		3317 S Orange		9-9-81 11-24-54	
8+0	94.1 94.1	86.30 86.56	7.8 7.5	8+49.0	7+06.0 7+81.0		9024 #2754 8698 #2753		3316 S Orange 3306 S Orange 3307 S Orange		1-15-59 11-24-54 12-1-58 11-24-54	
9+0	94.0	86.70	7.3		8+55.5 8+89.0		#2752 6672		3265 S Orange 3256 S Hardley		11-24-54 4-16-58	
10+0	94.2	87.10	7.1		9+28.5 9+86.0 9+98.0		#2751 #3458 2750		3257 S Orange 3249 S Orange		11-24-54 6-7-85 11-24-54	
11+0	94.0	87.50	6.5		10+71.0		#9393 2749		3241 S Orange		10-10-83 11-24-54	
12+0	94.2 94.4	87.70 87.90	6.5 6.5	11+53.0	11+14.0 11+45.5		16489 #30 #300435 2748		3236 S Hardley 3246 S Hardley 3233 S Orange		12-17-62 5-28-60 see next pg 2-17-02 11-24-54	
13+0	94.7	88.30	6.4		12+11.0 12+14.0 12+92.5 12+89.5		6136 #2747 #21676 2746		3225 S Orange 3210 S Orange 3217 S Orange		1-15-58 11-4-83 11-24-54	
14+0	94.9 96.2	88.70 89.00	6.2 7.2	14+58.0	13+68.0 13+65.0 14+31.0 14+35.0 14+32.0 14+54.75		#2745 9202 #2744 9277		3209 S Orange 3210 S Hardley 3201 S Orange 3210 S Hardley		11-24-54 9-16-83 11-24-54 9-27-83	
Line # 3	0+0	93.0	84.17	8.8	0+64.0		26105 2692		3502 S Orange		7-16-86 11-23-54	
1+0	93.2	84.37	8.8		1+12.5 1+75.5		#2692 #2670		3510 S Orange 3516 S Orange		11-23-54 11-22-54	
2+0	93.1	84.57	8.5		2+33.0 2+99.0		#2671 #2672		3522 S Orange 3528 S Orange		11-22-54 11-22-54	
3+0	92.8	84.78	8.0	3+06.0	3+63.0		#2673		3534 S Orange		11-22-54	
4+0	92.8	84.97	7.8		4+26.5 4+87.0		#2674 #2675		3540 S Orange 3546 S Orange		11-22-54 11-22-54	
5+0	92.7	85.17	7.5		4" sch 40 5+56.0		2001-01819 #2676		3552 R Orange	see next	11-22-54 7-31-01	
6+0	92.5 92.4	85.37 85.39	7.1 7.0	6+11.0	6+02.0		#2677		3558 S Orange		11-22-54	
Line # 4	0+0	93.2	84.83	8.4	0+00 = 94.45 in Line #1-A							
1+0	93.1	85.23	7.9		1+08.0 1+54.0		#2714 #2713	#2678 #2679	816 W. 34th 3433 S Hardley	3445 S Orange 3455 S Orange	11-23-54 11-23-54	11-23-54 11-23-54

NOTE:

Construction Record for this project continues on page 214.

- #3031 - Inf - 3213 S. Oak - Creekmore - 11-14-56
- #3032 - Inf - 3221 S. Oak - Creekmore - 11-14-56
- #3033 - Inf - 3237 S. Oak - Creekmore - 11-14-56
- #3341 - Inf - 3273 S. Oak - Creekmore - 12-14-56

3943 - top - 3246 S. Hardley - Kimball - 3-13-57

2002-01221 4/29/02 3357 S Osage Padgett EXC- 4"40PK 4"wc repaired 31' N of MH 2139 (2+70)
1/4" fall, shallow, replaced entire line, avaa, 1Haa, 4"twiwo @ house - No alley

2002-00485 2/19/02 3233 S Osage-Clearwater EXC- 4"40 PK Replaced all but lower 2', 1/4" fall,
shallow, No Bends, 4"twiwo @ house, no alley

2001-01819- 7/23/01- 3552S Osage- Lubbers EX- 4"sch40 4"wc repaired 55' N of MH 611 (5+56) on msmt
Replaced entire line, 1V45, 17wiwo @ house