

2002-01378-5/16/02 3221 Oak - Wichita Exc -  
4" PVC 4" Wye repair 52' S of MH at 59.4 (3+11.4)  
Replaced entire line - 4" twin CO @ house, 4" full  
shallow - no bends, no alley

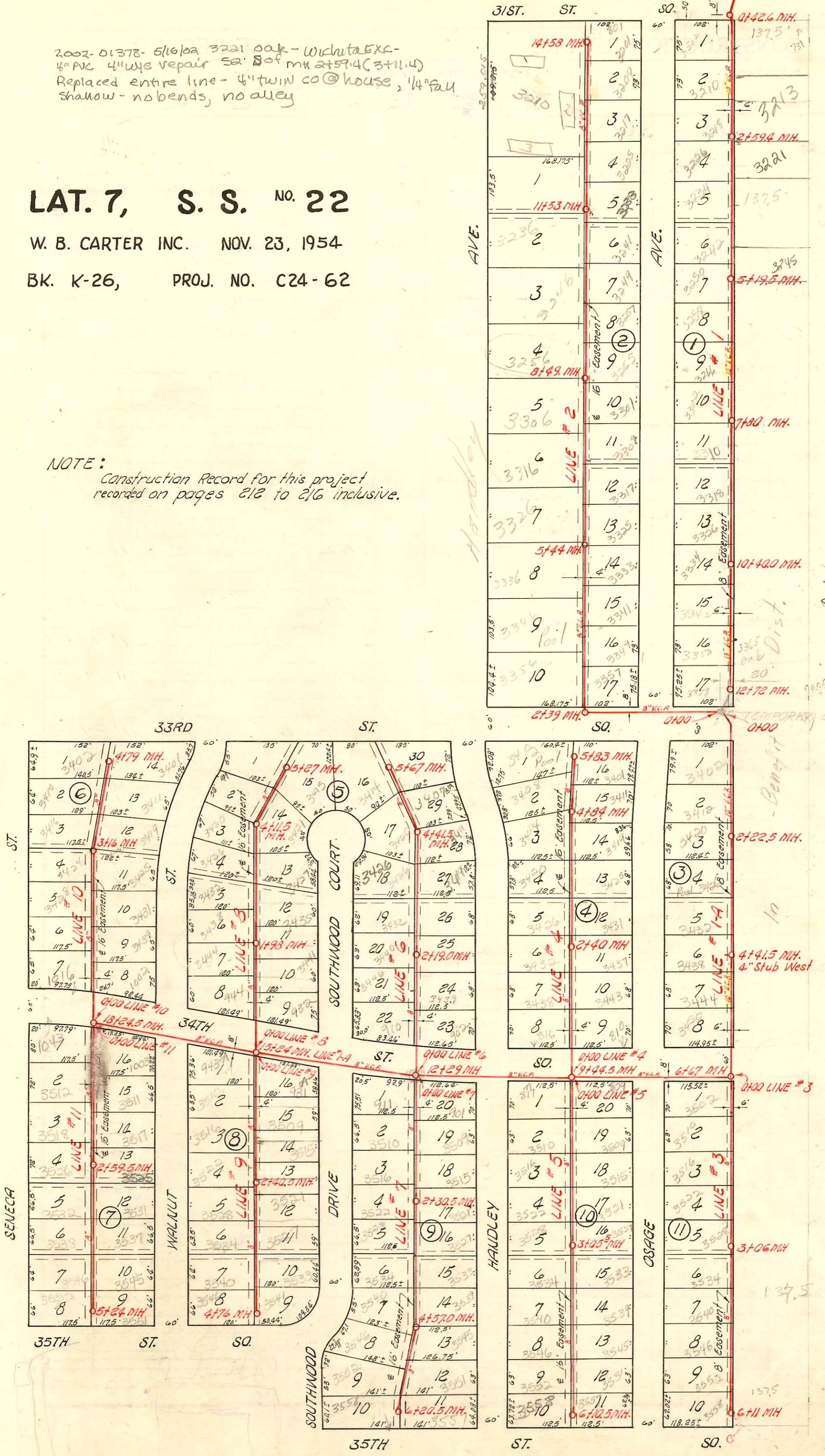
# LAT. 7, S. S. NO. 22

W. B. CARTER INC. NOV. 23, 1954

BK. K-26, PROJ. NO. C24-62

NOTE: Construction Record for this project  
recorded on pages 212 to 216 inclusive.

Existing 36" San. Sewer → 4000 Existing MH →



N  
↑  
1" = 150'  
OAK

6026 Enterprise Blvd 3612 S. Union  
6027 S. Enterprise Blvd 3612 S. Union  
# 14325 Top 701 W. 33rd St. Lane Archie Pkg. 6-21-61 (MH to 6711)  
# C53741-700 W. 35th St. Lane Archie Pkg. 9/13/76

CONSTRUCTION RECORD

SERVICE RECORD

STATION	ELEVATION		Depth	MANHOLE	4-INCH "Y" BRANCHES		No. of Permit		House Number		DATE OF PERMITS	
	Ground	Grade			North West	South East	North West	South East	North West	South East	North West	South East
Line #4 Continued 2+0	93.3	85.63	7.7				#2716	#2708	3925 Handley	3935 Osage	11-23-54	11-23-54
	93.2	85.79	7.4	2+40.0	2+20.0	2+17.0	#2717	#2709	3926 S Handley	3931 S Osage	11-23-54	11-23-54
3+0	93.1	86.03	7.1		3+53.0	3+50.0	#2718	#2710	3920 S Handley	3925 S Osage	11-23-54	11-23-54
4+0	93.6	86.43	7.2		4+22.0	4+19.0	#2719	#2711	3914 S Handley	3915 S Osage	11-23-54	11-23-54
	93.3	86.76 86.86	6.5 6.4	4+84.0	4+97.0	4+94.0	#2720	#2712	3908 S Handley	3911 S Osage	11-23-54	11-23-54
5+0	93.8	86.93	6.9		5+70.0	5+67	#2721	#2712	3902 S Handley	3901 S Osage	11-23-54	11-23-54
	93.4	87.26	6.3	5+83.0								
Line #5 0+0	92.8	84.83	8.0	0+00 = 9+44.5 in Line #1-A	0+64.5	0+61.5	#2729	#2722	8176 3411 S Handley	3501 S Osage	11-21-54	11-23-54
	1+0	93.0	85.23	7.8		1+00.5		#3842		3510 S Handley		3-9-55
2+0	92.8	85.63	7.2		1+67.0	1+64.0	#3841	#2661	3516 S Handley	3515 S Osage	3-9-55	11-22-54
					2+30.5	2+27.5	#2730	#2662	3522 R Handley	3521 S Osage	11-24-54	11-22-54
3+0	92.4	86.05	6.3	3+05.5	2+97.5	2+94.5	#2731	#2663	3528 S Handley	3527 S Osage	11-24-54	11-22-54
					3+57.5	3+54.5	#3839	#2664	3534 S Handley	3533 S Osage	3-9-55	11-22-54
4+0	92.4	86.43	6.0		4+18.5	4+15.5	#2732	#2666	3540 S Handley	3539 S Osage	11-24-54	11-22-54
					4+82.0	4+79.0	#2732	#2667	3546 S Handley	3545 S Osage	11-24-54	11-22-54
5+0	92.6	86.83	5.8		5+46.0	5+43.0	#2733	#2668	3552 S Handley	3551 S Osage	11-24-54	11-22-54
					5+97.5	5+97.5	#2733	#2669				
6+0	92.5	87.23	5.3		6+00.5							
	92.7	87.27	5.4	6+10.5								
Line #6 0+0	92.7	85.40	7.3	0+00 = 12+29.0 in Line 1-A	0+82.0	0+79.0	#5214	#4712	910 W 3412 Handley	904 W 3411 Handley	6-14-55	5-10-55
	1+0	92.9	85.80	7.1		1+49.5	1+46.5	#5213	#4713	3413 R Handley	3412 R Handley	6-12-55
2+0	93.3	86.20	7.1		2+06.5	2+03.5	#5212	#4714	3440 Southwood	3435 Handley	6-14-55	5-10-55
					2+73.0	2+70.0	#5211	#4716	3432 Southwood	3425 S Handley	6-14-55	5-10-55
3+0	93.2	86.60	6.6		3+37.5	3+34.5	#5210	#4717	3426 R Handley	3415 R Handley	6-14-55	5-10-55
					3+99.0	3+96.0	#5210	#4717	3415 Handley	3414 Handley	6-14-55	
4+0	93.3	87.00	6.3			4+48.5		#3847		3401 S Handley		11-26-51
	93.2	87.17	5.9	4+41.5		4+62.5 top	4+47.5	#5208	#4718	3407 Handley	3406 Handley	6-14-55
5+0	93.4	87.50	5.9		5+50.5	5+47.5	#5208	#4718	3414 Southwood	3413 Handley	6-14-55	5-10-55
	93.5	87.77	5.7	5+67.0								
Line #7 0+0	92.50	85.40	7.1	0+00 = 12+29.0 in Line 1-A	0+59.0	0+56.0	#2735	#2734	911 W 3414 Handley	901 W 3413 Handley	11-24-54	11-24-54
	1+0	92.4	85.80	6.6		1+04.0	1+01.0	#3844	#3845	3510 Southwood	3509 S Handley	3-9-55
2+0	92.6	86.20	6.4		1+58.5	1+55.5	#3846	#3846	3516 Southwood	3515 S Handley	3-9-55	3-9-55
					2+24.5	2+21.5	#2737	#2736	3522 Southwood	3521 S Handley	11-24-54	11-24-54
3+0	92.7	86.32	6.4	2+30.5	2+96.5	2+93.5	#2739	#2738	3528 Southwood	3527 S Handley	11-24-54	11-24-54
					3+53.5	3+50.5	#3848	#3847	3534 Southwood	3533 S Handley	3-9-55	3-9-55
4+0	92.2	87.00	5.2		4+18.0	4+15.0	#3850	#3849	3540 Southwood	3533 S Handley	3-9-55	3-9-55

Note: Construction Record for this proj. continues on page 215

5209 - 3420 Southwood 24 - Babco Nbg - 5-10-55  
 2002- 16297 - 3558 S Handley R Reynolds Alley 11-19-62 - top (5+94.5) Kimeplbg - soil pipe extension  
 02159 4" PVC 40, install 4" twin co @ back of new addition 1+45

SWR 2001-02476-10/5/01- 3516 S Handley - 4" PVC - Replaced lower 4' of line at main, 4" WYE - (38' N of MH 3+05.5 (1+67.5) Replaced 25' of line @ house end, 1" TWIN CO @ house 1V22 - Clearwater EXC

2002-03362-12/12/02- 3446 Southwood Ct - Shallow - 4" 40 PVC Replaced all but lower 4', 1/4" fall shallow, 4" twin co @ house, Wye is aprx on msmt, NO bends, NO alley

2003-01666 6/24/03 3426 Southwood - Roto Man - 4" PVC 40 - 4" WYE REPAIR - 117' N of MH 2+19 (3+36) 1/4" fall shallow, 4" twin co @ house, 1H22, 3V45, NO alley

2001-00911-4/17/01- 911 W 34th St S - Roto - Pipe Burst - 4" PE SDR17 - 4" WYE 59' S of MH 0+00 (0+59) 1V22, 1H22, 1V45 - Replaced entire line