

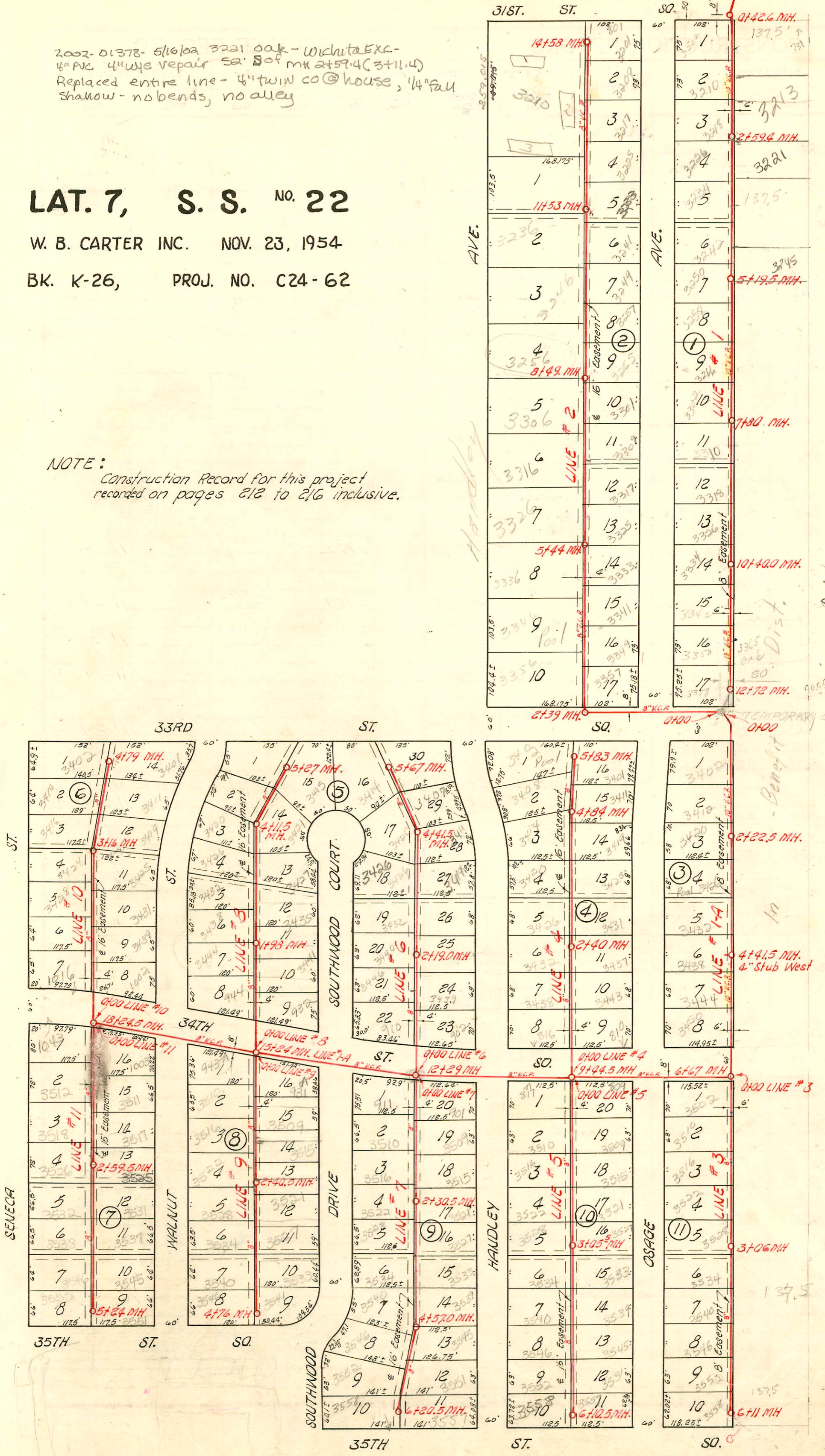
2002-01378-5/16/02 3221 Oak - Wichita Exc -
 4" PVC 4" Wye repair 52' S of MH at 59.4 (3+11.4)
 Replaced entire line - 4" twin co @ house, 4" full
 shallow - no bends, no alley

LAT. 7, S. S. NO. 22

W. B. CARTER INC. NOV. 23, 1954
 BK. K-26, PROJ. NO. C24-62

NOTE: Construction Record for this project
 recorded on pages 212 to 216 inclusive.

Existing 36" San. Sewer → 4100 Existing MH →



N
 1" = 150'
 OAK

6026 Enterprise Blvd 3612 S Union
 6027 Enterprise Blvd 3612 S Union
 # 14325 Top 701 W. 33rd St. Lane Archie Pkg. 6-21-61 (MH to 6711)
 # C53741-700 W. 35th St. Lane Archie Pkg. 9/13/76

CONSTRUCTION RECORD

SERVICE RECORD

STATION	ELEVATION		Depth	MANHOLE	4-INCH "Y" BRANCHES		No. of Permit		House Number		DATE OF PERMITS			
	Ground	Grade			North West	South East	North West	South East	North West	South East	North West	South East	North West	South East
Line #7 Continued	92.4	87.22 out 87.32 in	5.2 5.1	4+57.0										
5+0	92.2	87.50	4.7		4+91.0	4+88.0	#2711	#2740	3546 Southwood	3545 Handley	11-24-54	11-24-54		
6+0	92.0	87.90	4.1		5+65.5	5+47.0	#2743	#2742	3552 Southwood	3551 Handley	11-24-54	11-24-54		
	92.2	87.98	4.2	6+20.5	6+13.0	6+10.0	#6049	#6298	3558 Southwood	3557 Handley	12-7-67	10-29-62		
Line #8	0+0	93.0	6.9	0+00 = 15+24 in Line #1-A										
					0+79.5		#3393		920 W 341 R			10-27-51 6-14-55		
1+0	93.5	86.49	7.0		0+94.5		#3052		744 W 342 R			12-28-54		
					1+21.5		#5203		3441 Southwood			6-14-55		
					1+49.0		#2822		3444 Walnut			12-1-54		
2+0	92.8	86.89	5.9	1+98.0										
					2+05.0		#3051		3438 Walnut			12-28-54		
					2+39.0		#5204		3437 Southwood			6-14-55		
					2+65.5		#2821		3430 Walnut			12-1-54		
3+0	93.0	87.29	5.7		3+19.5	3+16.5	#3050	#5205	3426 Walnut	3427 Southwood	12-28-54	6-14-55		
4+0	92.9	87.69	5.2		3+76.0	3+73.0	#2820		3420 Walnut			12-1-54		
				4+11.5	4+27.0		#3049		3412 Walnut			12-28-54		
5+0	93.2	88.29	4.9		5+05.0	5+02.0	#2819	#2810	3415 W 341 R		see next pg	3-9-51 6-14-55		
	93.2	88.45	4.8	5+27.0										
Line #9	0+0	92.4	6.3	0+00 = 15+24.0 Line 1-A										
					0+43.0	0+40.0	#6236	#6237	3432 W 3426 S	341 W 341 S		9-1-55		
1+0	92.5	86.49	6.0		0+85.0		#6238		3510 S Walnut			9-1-55		
					1+06.5		#6245		3516 S Walnut	3509 Southwood		9-1-55		
					1+67.0		#6246		3515 R Southwood			5-6-50 9-1-55		
2+0	92.7	86.89	5.8		2+11.5		#6240		3522 S Walnut	see next 3521 Southwood		6-25-51 9-1-55		
					2+27.0		#6247					9-1-55		
	92.4	87.05	5.3	2+40.5	2+72.5		#6241		3528 S Walnut			4-17-54 9-1-55		
					2+84.0		#6248		3527 R Southwood			9-1-55		
3+0	92.5	87.29	5.2		3+41.0	3+38.0	#6242	#6249	3534 S Walnut	3533 Southwood	9-1-55	9-1-55		
4+0	92.5	87.69	4.8		4+07.0	4+04.0	#6243	#6250	3540 S Walnut	3541 R Southwood	9-1-55	8-12-50 9-1-55		
	92.3	87.99	4.3	4+76.0	4+67.0	4+64.0	#6244		3546 S Walnut			9-1-55		
Line #10	0+0	93.3	6.6	0+00 = 18+24.5 in Line 1-A										
1+0	93.4	87.09	6.3		0+94.0		#5818		1002 W 341 R			12-1-54		
					1+08.5		#5605		1016 W 342 S			11-5-57		
					1+33.0		#3048		3439 Walnut			12-28-54		
					1+45.5				3431 R Walnut			12-1-54		
2+0	93.4	87.49	5.9		2+06.5		#3151		3428 Walnut			1-11-55		
					2+63.5	2+60.5	#2728	#3047	3422 S Seneca	3420 Walnut	11-24-54	12-28-54		
3+0	93.2	87.89	5.3		3+40.0	3+37.0	#3400	#2816	3416 Seneca	3421 R Walnut	6-28-55	12-1-54		
	93.4	87.96 88.06	5.4 5.3	3+16.0										
4+0	93.1	88.39	4.7		4+03.0	4+00.0	#3947	#3046	3410 R Seneca	3411 Walnut	7-10-56	10-28-54		
					4+62.5	4+59.5	#3985	#2815	3402 Seneca	3401 R Walnut	3-28-55	12-1-54		
	93.2	88.71	4.5	4+79.0										

NOTE: This project continues on page 216.

#5206 - Sep - 3421 Southwood St. - 6-14-55
#6237 - Sep - 931 W. 34th St. - Lakewood - 10-19-55

2001-00510 - 3/9/01 - 3415 S Southwind - Irwin Pkg - 4" sch 40 - Soil pipe extension - Replaced all but lower 3' - ITWINCO

2001-01103 - 5/3/01 - 3516 S Walnut - Lubbers - 4" sch 40 - Replaced all but lower 3' of sewer - No bends - ITWINCO

2001-01548 - 6/25/01 - 3522 S Walnut - McClung's - 4" sch 40 - 4" wye - 21' S of NPL - Replaced entire line - ITWINCO