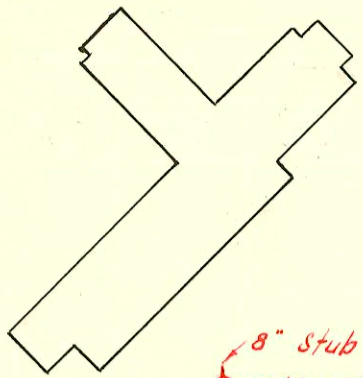


ELEMENTARY SCHOOL
FOR
MINNEHA DIST. 134



8" Stub North
13190.0 MH.

8"

10110.0 MH.

8"

6130.0 MH.

Line Abandoned
Sec L-262

MH 21400
ABANDONED

50'

WEBB AVE

50'

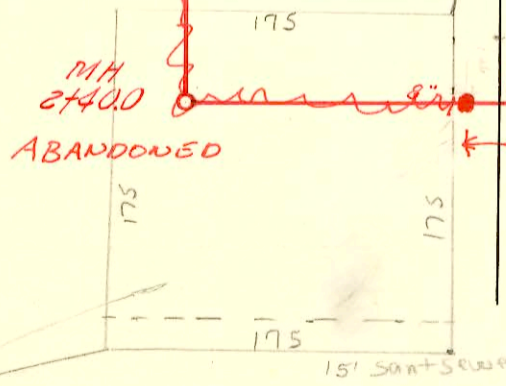
N

1" = 100'

PROPERTY OWNED BY
ROUNDS

SCR 2002-02237 8/15/02 701 N Webb Rd
(Bldg Addition) Mies Const.

SCR 2002-02200 8/15/02 701 N Webb Rd
(Bldg Add) Mies Const.



Manhole 0100 MH.

WAR INDUSTRY SEWER

200'

CENTRAL AVE.

Proposed Johnson's
General Store
NOT incl in assess lot
Rest of Corporate Lakes Add
Charge fee in next assess
before issuing sewer permit
BE 7/13/90

MINNEHA SCHOOL DIST. NO. 134 SAN. SEWER

SEDGWICK COUNTY, KANSAS

F. E. DEVLIN, CONSULTING ENG., WICHITA, KANSAS. 1949

CONSTRUCTION RECORD

SERVICE RECORD

STATION	ELEVATION		Depth	MANHOLE	4-INCH "Y" BRANCHES		No. of Permit		House Number		DATE OF PERMITS	
	Ground	Grade			North West	South East	North West	South East	North West	South East	North West	South East
0+0	93.0	86.69	6.3	0+00 = 18+24.5 in Line #1-A	0+43.5	0+40.5	14840		10432 34th St		10-17-61	
1+0	92.5	87.09	5.4		1+02.0	1+73.5	#3122	#6665	3512 S. Seneca	3511 S. Walnut	1-7-55	10-13-55
2+0	92.6	87.49	5.1		2+42.0	2+39.0	#3055	#6666	3518 S. Seneca	3519 S. Walnut	12-29-54	10-13-55
3+0	92.4	87.73	4.7	2+59.5	3+12.0	3+09.0	#3056	#6667	3526 S. Seneca	3525 S. Walnut	see just below	12-29-54
4+0	92.2	88.29	3.9		4+03.0	4+00.0	#4757	#6669	3534 S. Seneca	3531 S. Walnut	12-29-54	10-13-55
5+0	92.1	88.69	3.4		4+61.0	4+58.0	#5754	#6671	3538 S. Seneca	3537 S. Walnut	7-1-55	10-13-55
	92.1	88.79	3.3	5+24.0	5+19.5	5+16.5			3545 S. Seneca	3544 S. Walnut	5-11-55	10-13-55
2002-00967 4" x 10" 3525 Walnut - Denny's Cleanout - twin co, 3H22, 3V22, 4" sch 40 PVC, 1/4" fall - tied back to claytile 2' from main												
0+0				0+00								
1+0												
2+0				2+40	Y-WEST	Y-EAST						
3+0												
4+0												
5+0												
6+0				6+30								
7+0												
8+0												
9+0												
10+0												
11+0				10+00								
12+0												
13+0				13+90.0	(8" stub North)							

MINNEHA SCHOOL DIST. NO. 134 SANITARY SEWER

grades

Y SOUTH

Y-WEST Y-EAST

#6660 - Tap - 1005 W. 24th South - ZAKER p169 10-13-55

#977 - Tap Minneha School - 7-6-49 Ray, Bus.
 #2242 - Tap " " 8-20-52 Randall P169
 #2243 - Tap " " 8-20-52 " "
 24497 + 3927 - 6" on 8" wye (533 Walnut Rd (2nd St)) - Ray Bus. (sealed 21' 5 y a M.H.)
 #2528 - 6" on 8" wye - 655 W. 25th - (School) - Ray Bus.
 289 - 6" on 8" y 650 W. 25th Rd - G. Ray - 3-21-56