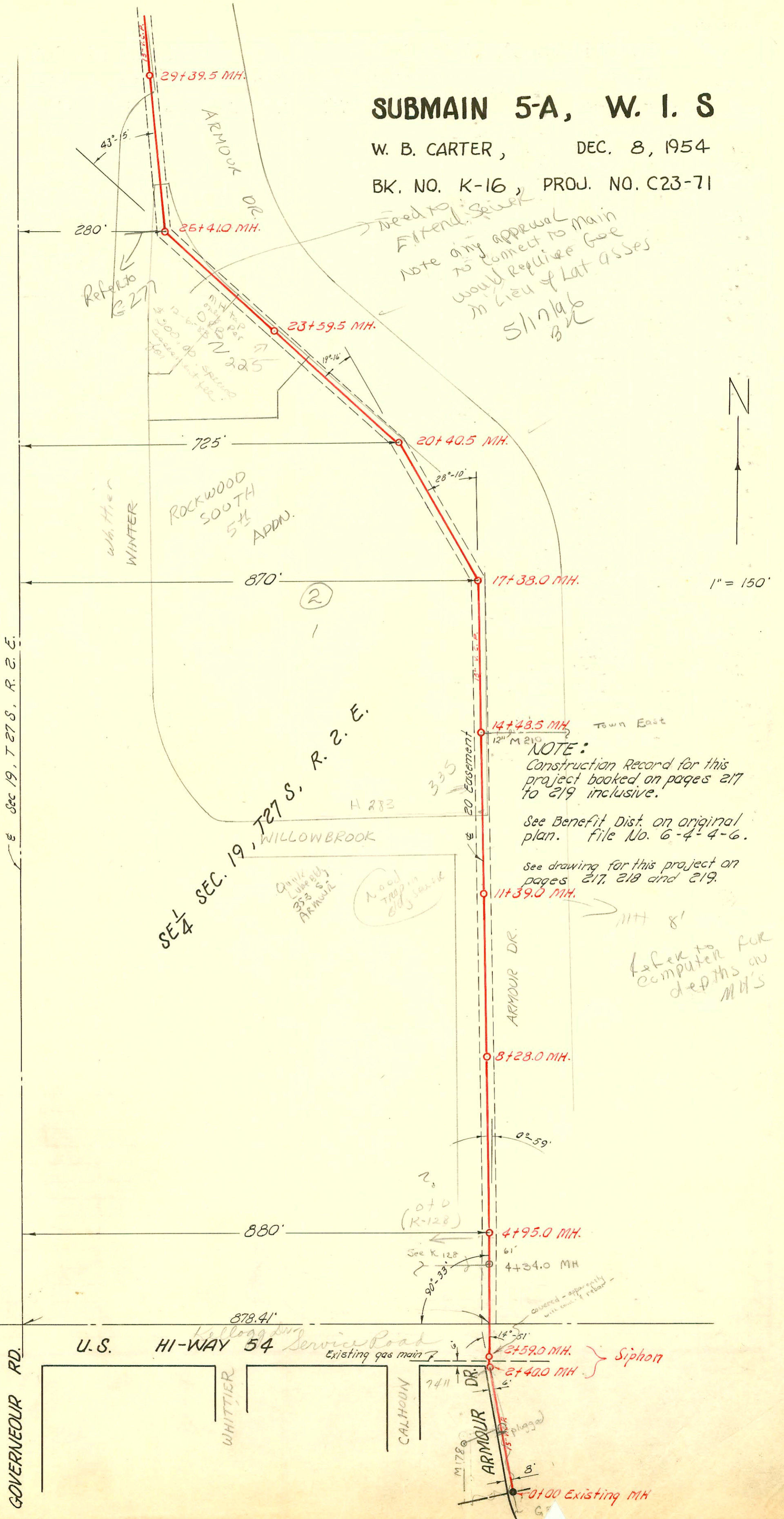


SUBMAIN 5-A, W. I. S

W. B. CARTER, DEC. 8, 1954

BK. NO. K-16, PROJ. NO. C23-71



CONSTRUCTION RECORD						SERVICE RECORD						
STATION	ELEVATION		Depth	MANHOLE	4-INCH "Y" BRANCHES		No. of Permit		House Number		DATE OF PERMITS	
	Ground	Grade			North West	South East	North West	South East	North West	South East	North West	South East
0+0	147.24	142.64	4.6	0+00 Exist'g MH								
1+0	149.9	142.85	7.0									
2+0	152.1	143.05	9.0									
	153.0	143.12 143.42 in.	9.9 9.6	2+40.0	} Siphon							
	153.0	143.45	9.6	2+59.0								
3+0												
4+0	147.8	143.75	4.0									
	148.9	143.92	5.0	4+95.0								
5+0	149.3	143.95	5.3									
6+0	149.8	144.15	5.7		Tap 6+42.0		91-18911-5701 C3064		7316 E. Kellogg		5-12-67	
7+0	150.2	144.35	5.9									
8+0	147.8	144.55	3.2									
	147.7	144.59	3.1	8+28.0								
9+0	148.4	144.75	3.6									
10+0	149.6	144.95	4.6									
11+0	149.9	145.15	4.7									
	149.5	145.21	4.3	11+39.0			93-228707		353 S. AR. Mank		11-25-98	
12+0	150.0	145.35	4.7									
13+0	151.1	145.55	5.6									
14+0	151.1	145.75	5.3									
	151.0	145.83	5.2	14+48.5								
15+0	150.1	145.95	4.1									
16+0	151.2	146.15	5.0									
17+0	152.9	146.35	6.5									
	153.2	146.41	6.8	17+38.0								
18+0	151.9	146.55	5.3									
19+0	154.1	146.75	7.3									
20+0	157.3	146.95	10.3									
	157.1	147.01	10.1	20+40.5								
21+0	157.6	147.15	10.4									
22+0	157.6	147.35	10.2									
23+0	156.7	147.55	9.1									
	156.6	147.65	9.0	23+59.5	mH Tap OK		10282		225 S. Arrow		2-22-84	
24+0	157.8	147.75	10.0									
25+0	160.3	147.95	12.3									
26+0	161.4	148.15	13.2									
	161.6	148.21	13.4	26+41.0								
27+0	159.2	148.35	10.8									
28+0	158.3	148.55	9.7									
29+0	161.1	148.75	12.3									

NOTE:
This project continues on page 218

#1458 - tap - 7411 E. Kellogg - Callison Rd. 7-25-58
#27201 - 3-15-91 - 7310 E. Kellogg - Archie Conduff