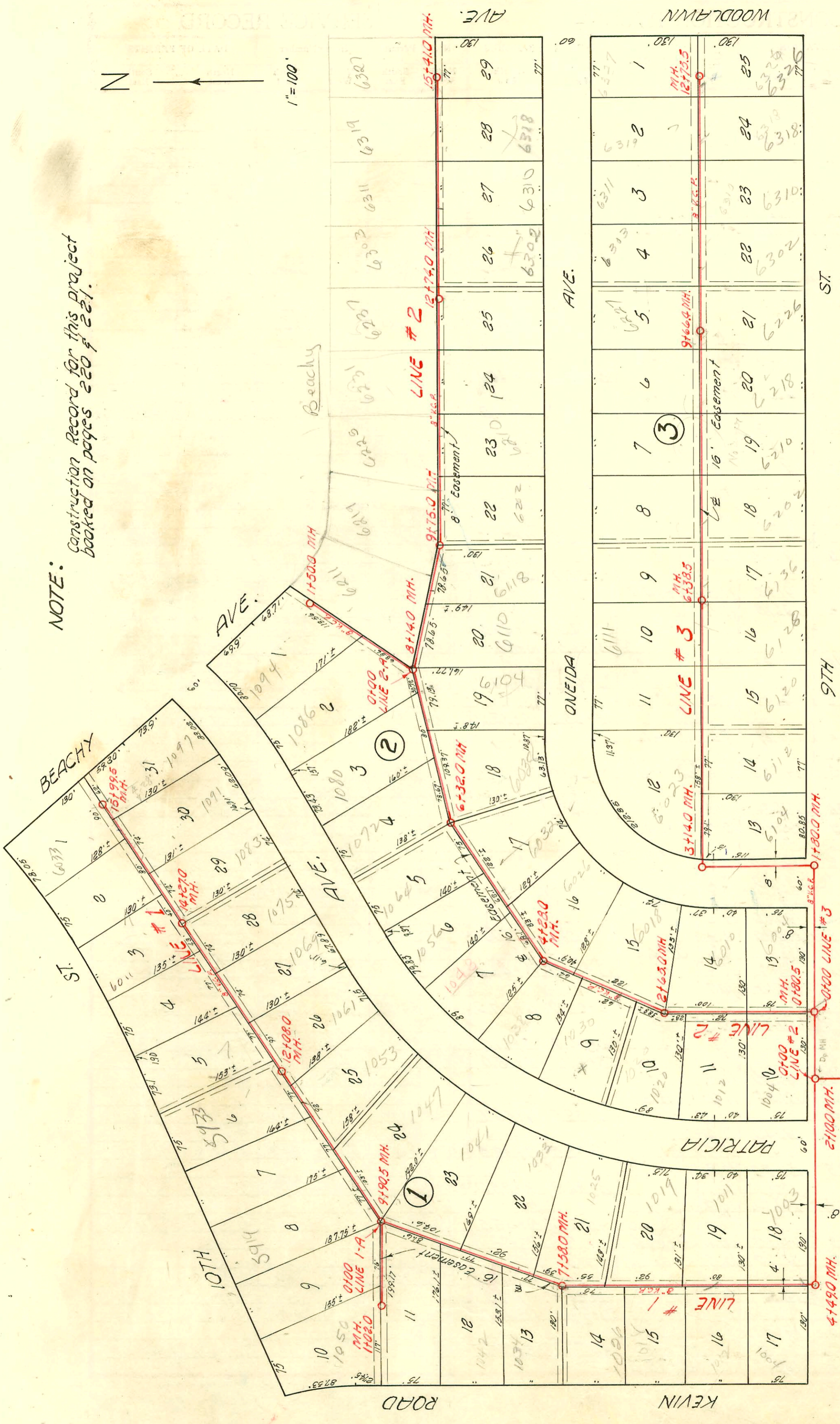


NOTE: Construction Record for this project booked on pages 220 & 221.



1" = 100'



LAT. 40, D.C.S. NO. 2, S. S. 12

W. B. CARTER CO. INC., DEC. 31, 1954

BK. NO. K-27, PROJ. NO. C24-70

0100 Existing MH. LINE #1

CONSTRUCTION RECORD

SERVICE RECORD

STATION	ELEVATION		Depth	MANHOLE	4-INCH "Y" BRANCHES		No. of Permit		House Number		DATE OF PERMITS	
	Ground	Grade			North West	South East	North West	South East	North West	South East	North West	South East
0+0	195.4	186.86	8.5	0+00 Exist'g MH								
1+0	196.0	186.96	9.0									
2+0	194.5	187.07 out 187.17 in	7.4 7.3	2+10.0								
3+0	193.7	187.26	6.4									
4+0	191.8	187.36	4.4									
	191.6	187.41 out 187.51 in	4.2 4.1	4+49.0								
5+0	190.8	187.56	3.2		4+77.0	4+74.0	#3521	#4487	1004 Kensley	1003 Patricia	4-16-58	4-27-55
6+0	191.5	187.66	3.8		5+53.0	5+50.0	#4679	#4591	1012 Kensley	1011 Patricia	5-9-55	5-3-55
7+0	192.4	187.76	4.6		6+25.0	6+31.0	19076 #58		1018 Kensley	1017 Patricia	9-16-89 4-9-56	
					7+06.0	7+21.0	#3115		1026 Kensley			10-17-55
8+0	193.1	187.82	5.3	7+58.0	7+74.0	7+98	#5537 #4680	1033 Kensley	1034 Patricia	1-4-93	3-28-81 5-7-55	
9+0	194.7	187.96	6.7		8+13.5	8+52.5	#5571		1042 Kensley		7-14-55	
10+0	196.0	188.05	8.0	9+90.5	9+28.0	9+07.0	#3888 #1671	#270	1044 Kensley	1041 Patricia	5-9-73 7-26-55	3-19-56
11+0	197.5	188.16	9.3	10+11.0 10+88.0	10+18.0	10+88.0	4290 #423	5969 #5873	1047 Kensley	1046 Patricia	5-16-97 4-5-55	4-9-57
12+0	200.0	188.27 out 192.27 in	11.7 7.7	12+08.0	11+64.0	11+15.5	#5775 #6557	5933 #1024	1053 Kensley		9-22-55	7-27-55
13+0	202.2	192.36	9.8	12+19.0 12+40.0	12+94.0	12+19.0	#5927 #5609	#6625	6002 Kensley	1064 Patricia	1-17-95 7-27-55	10-7-55
14+0	204.6	192.46 out 196.49 in	12.1 8.5	14+27.0	13+18.0	13+71.0	#2428 #6770	#6016	6011 Kensley	1076 Patricia	1-16-90 1-28-55	8-16-55
15+0	206.9	196.56	10.3	14+72.0	14+43.0	14+72.0	#5693	6019 #1024	1073 Kensley		7-21-55	8-3-55
	207.6	196.66	10.9	15+18.0	15+64.0	15+18.0	22995 #6534	6033 #1076	1091 Kensley	1090 Patricia	4-24-89	4-10-54 9-21-55
Line #1-A 0+0	196.0	188.25	7.8	0+21.0 0+93.0	1+02.0	M.H. Jap	#4488 #6078	5911 #1024	1056 Kensley		4-27-55 6-30-52 1-30-57	
1+0	192.3	188.35	4.0						1048 Kensley			5-9-73
Line #2 0+0	194.5	188.00 out 188.13 in	6.5 8.0	0+80.5	1+21.4	1+18.4	#2437 #4036	#5803	1001 Kensley	6004 Patricia	4-4-55	7-28-55
1+0	197.2	188.20	9.0		1+94.0	1+91.0	#5518	1038 Patricia	6010 Kensley		4-4-55	12-2-58
2+0	198.2	188.30	9.9		2+57.5	2+96.0			1020 Kensley		7-8-55	
	198.9	188.36 out 190.71 in	10.5 8.2	2+65.0	3+23.0	3+93.0	#6774 #5898	1039 Patricia	1038 Patricia		12-1-55	12-27-57
3+0	198.5	190.75	7.8	4+28.0								

This project Continues on page 221

#4106 Top - 6033 E 10th - Kensley Pkg. 4-7-55
 #5753 Top - 1091 Patricia - Kensley Pkg. 7-26-55
 Prop #4311 Top - 6240 Kensley - Kensley Pkg. 2-6-57
 #5898 Top - 1638 Patricia - Kensley Pkg. 12-26-57
 96-187167 11-6-96 OR Dennis McCamp's

#6623 Top - 5927 E 11th - 12-17-55
 #7198 Top - 6001 - 9th - Patricia Pkg. 1-6-56
 3977 Top - 1633 Patricia - Patricia Pkg. 1-4-55
 5074 1025 - 8-7-57
 8802 Top - 6018 Onida - Kensley 12-5-58 3+43.5