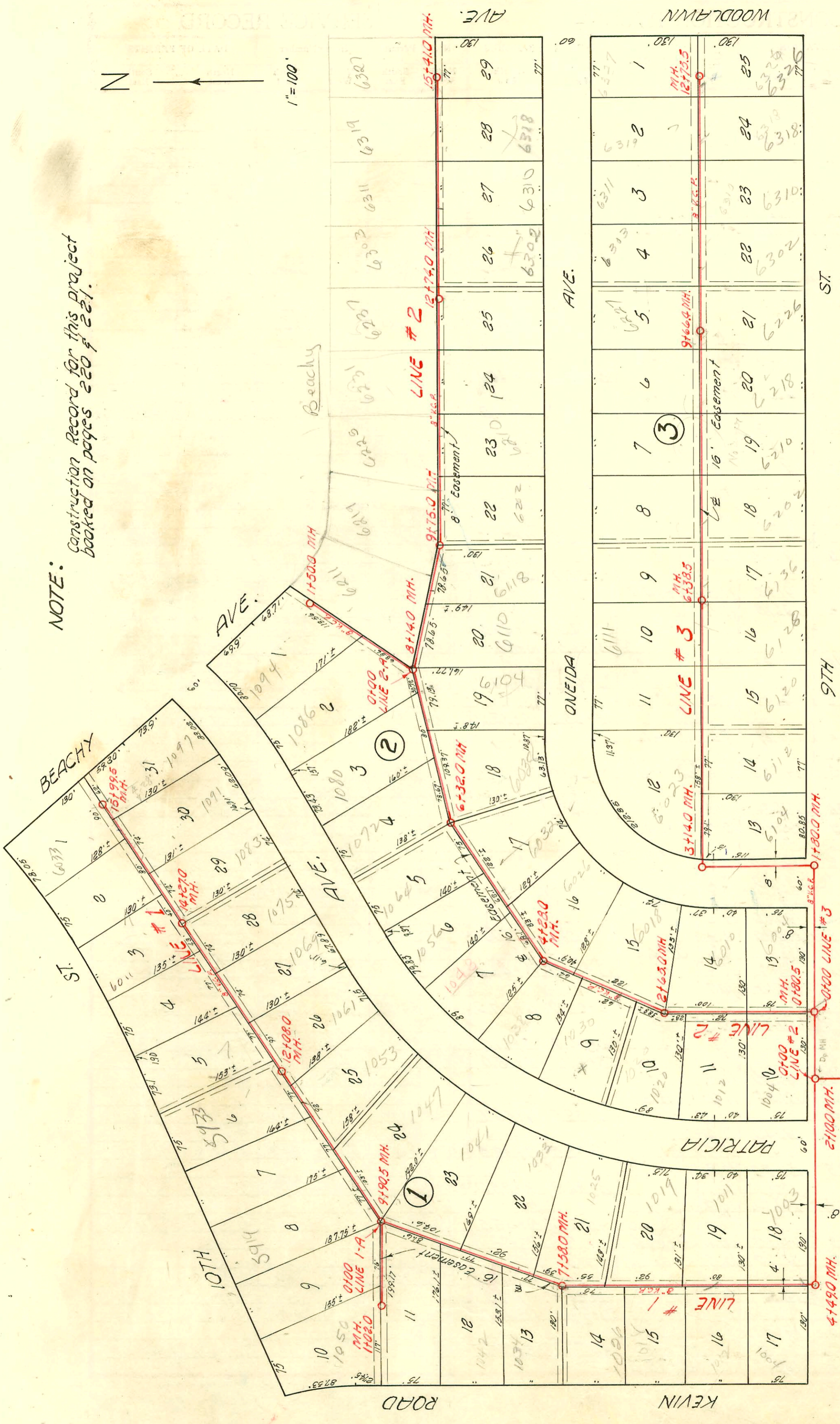


NOTE: Construction Record for this project booked on pages 220 & 221.



1" = 100'



# LAT. 40, D.C.S. NO. 2, S. S. 12

W. B. CARTER CO. INC., DEC. 31, 1954

BK. NO. K-27, PROJ. NO. C24-70

0100 Existing M.H. LINE #1

CONSTRUCTION RECORD

SERVICE RECORD

STATION	ELEVATION		Depth	MANHOLE	4-INCH "Y" BRANCHES		No. of Permit		House Number		DATE OF PERMITS			
	Ground	Grade			North	South	North West	South East	North West	South East	North West	South East	North West	South East
5+0	202.2	190.95	11.3			4+37.0		#5908		6076 Oneida		12-17-57		
					4+61.0		#3326	1078 Patricia		2-3-55				
					5+12.0		#3106	1056 Patricia		1-6-55				
6+0	203.4 204.2	191.05 191.08	12.4 13.1	6+32.0		5+41.0		#3105		1064 Patricia		1-6-55		
					5+63.5									
					6+57.5			1072 Patricia		7-15-55				
7+0	205.6	191.15	14.5			6+63.5		#3099		6028 Oneida		11-20-56		
					7+36.0									
8+0	205.5 205.5	191.26	14.2	8+14.0		7+66.5		#5781		6104 Oneida		8-11-55		
					8+43.0	8+40.0								
9+0	205.1	191.35	13.8			9+22.0	9+19.0	#2588		6018 E Oneida		2-2-55		
					9+98.5									
10+0	204.9	191.45	13.4			10+01.5	10+79.5	1291		6219 Beachy		6-29-56		
					10+79.5	10+76.5	5269		6220 Beachy		9-10-57			
11+0	204.3	191.55	12.7			11+56.5	11+53.5	#4644 #777		6216 R Oneida		11-12-81 5/14/56		
					12+35.0	12+32.0	#7351	6207 Beachy	6220(R) Oneida		2-8-56			
13+0	203.5 203.2	191.72 191.75	11.8 11.5	12+74.0		13+12.0	13+09.0	#15794 7240		6302 R Oneida		5-9-85 7-16-56		
					13+86.5	13+83.5	#2913	6211 Beachy	6210 R Oneida		10-19-66			
14+0	202.0	191.85	10.2			14+65.0	14+62.0	#1066	7241	6219 Beachy	6315 Oneida	6-11-56	1-16-56	
					15+35.0	15+32.0	#6704	#1381	6227 Beachy	1015 Woodlawn	10-21-55	7-6-56		
Line #2-A 0+0	205.5	195.26	10.2	0+00 = 8+14.0 Line #2		Y WEST								
					0+14		#3104	1086 Patricia		1-6-55				
1+0	205.8 205.9	195.36 195.41	10.4 10.5	1+50.0		4" SCH 40-20 1700		#4873		1074 Patricia		5-17-55		
Line #3 0+0	196.2	190.50	5.7	0+00 = 0+80.5 in Line #2		Y NORTH Y SOUTH								
					1+0									
1+0	198.0 199.9	190.60 190.68 Out 190.78 In	7.4 9.2 9.1	1+80.0										
					2+0									
3+0	200.4 200.8	190.80 190.90	9.6 9.9	3+14.0										
					200.7	190.92 191.02	9.8 9.7							
4+0	201.8	191.10	10.7			3+49.0	3+46.0	#5903		6104 R Oneida		8-8-55		
					4+28.0	4+25.0	#4793		6112 R Oneida		5-16-55			
5+0	202.9	191.20	11.7			5+04.0	5+01.0	#4705	#6512	6103 Oneida	6220 Oneida	5-1-55	9-21-55	
					5+81.0	5+78.0	#3104		6111 Oneida	R	8-8-55			
6+0	202.8 203.0	191.30 191.34	11.5 11.7	6+38.5		6+59.5	6+56.5		7336	6236 Oneida		2-6-56		
					7+35.5	7+32.5	#7134	#4031	6203 Oneida	6202 Oneida	2-21-56	4/2/56		
8+0	202.8	191.50	11.3			8+88.0	8+85.0	#5727	2228 4577	6213 Oneida	6218 Oneida	7-7-55	5-30-59 7-28-55	
					9+58.5	9+55.5	#743		6206(R) Oneida		5/10/56			
10+0	202.3 202.2	191.67 191.70	10.6 10.5	9+66.4		10+43.0	10+41.0	#2464	#19347	6303 R Oneida	6302 R Oneida	1-8-90	10-20-89	
					11+20.0	11+17.0	#4226	#2111	6311 Oneida	6310 R Oneida	4-12-55	7-20-55		
11+0	201.4	191.80	9.6			11+99.0	11+96.0	#6870	#7237	6219 Oneida	6318 R Oneida	11-10-55	1-12-56	
					12+72.2	12+69.2	5740	#6214	6227 Oneida	6228 Oneida	11-25-57	8-21-55		
12+0	199.4	191.98	7.4	12+75.5										

Line # 2  
Continued

Line #2-A

Line #3

#5728 - Top - 6211 Oneida - C.H. Kelly - 7-25-55  
 #6068 - Top - 6227 Oneida - J. Douglas Henderson - 8-22-55  
 #4930 - Top - 6110 Oneida - J. Douglas Henderson - 8-22-55  
 #8469 - Top - 6210 Oneida - J. Douglas Henderson - 8-22-55  
 #5936 - Top - 6119 Oneida - J. Douglas Henderson - 8-22-55  
 #81 - Top - 6021 - Artie Ray Blly - 3-1-56

#4428 - Top - 6202 Oneida - Jagers - 5-24-55  
 #2682 - Top - 6121 E. 9th - Jagers - 5-24-55  
 #7127 - Top - 6231 Beachy - Jagers - 5-24-55  
 #1010 - Top - 6211 Beachy - Jagers - 5-24-55  
 #7790 - Top - 1080 Patricia - Jagers - 5-24-55  
 #10127 - Top - 6032 Oneida - Jagers - 5-24-55  
 #68757 - Repair - 6138 E. 9th - Jagers - 5-24-55

Repair 2000-00153 - 1-18-00 - 6310E Oneida Ave - Wichita EX - 4" SCH40 - wye-Tied within 5' of main - 1145