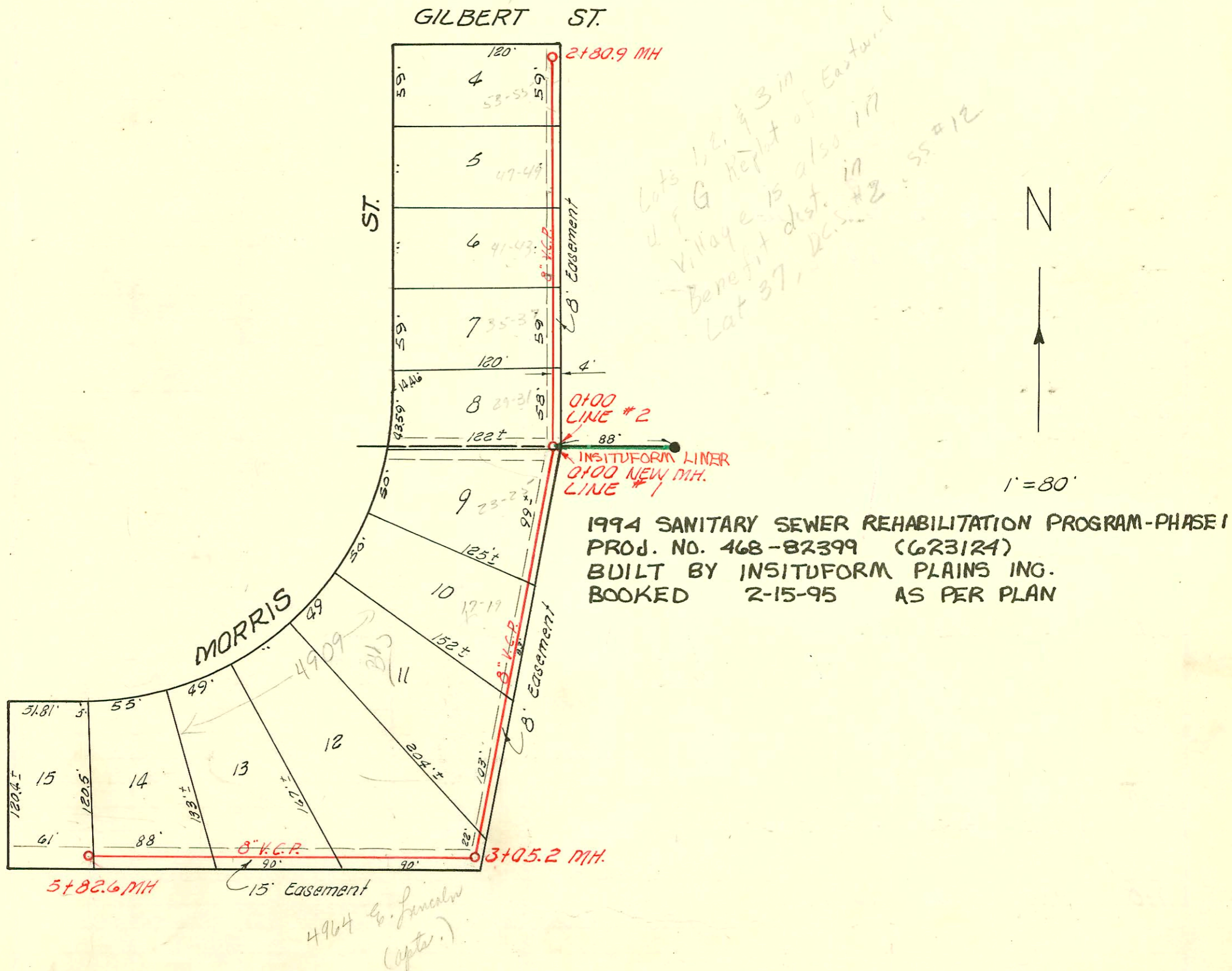


LAT. 15, SUB. 3, W. I. S

W. B. CARTER INC. FEB. 10, 1955

BK. NO. C 24-81 PROJ. NO. C24-81



LAT. 37, D.C.S. NO. 2, S. S. NO. 12

UTILITY CONT. INC., FEB. 11, 1955

BK. NO. K-18, PROJ. NO. C24-36

CONSTRUCTION RECORD						SERVICE RECORD							
STATION	ELEVATION		Depth	MANHOLE	4-INCH "Y" BRANCHES		No. of Permit		House Number		DATE OF PERMITS		
	Ground	Grade			North West	South East	North West	South East	North West	South East	North West	South East	
0+0	163.4	155.80	7.6	0+00 New MH									
1+0	163.6	156.30	7.3										
	163.9	156.46 out 156.66 in	7.4 7.2	1+32.0									
2+0	165.2	157.00	8.2		1+65.3		#6685		6601 E Kellogg			7-20-55	
					2+17.6		#5690		6601 E Kellogg			7-20-55	
					2+79.0								
3+0	166.3	157.50	7.8		3+29.0	4' Riser	#2375		6601 E Kellogg			3-8-02	
					3+75.0	4' Riser	#3523		6601 E Kellogg			2-23-67	
4+0	167.0	158.00	9.0		4+26.2		#4486						
					4+38.5		8805		6679 E Kellogg			7-26-53	
	167.4	158.25	9.2	4+50.0	(4" Stub NE)		#3566		6679 E Kellogg (6637)			2-24-55	
							C17223		6637 E Kellogg (garage)			12-8-69	
									(4" cast iron pipe under bldg. runs on to garage, hung on side of bldg. coming from 6637 E Kellogg on SW corner.)				
					4" Wyes								
					WEST								
LINE #1	0+0	148.2	138.00	10.2	0+00 New MH.								
	1+0	147.9	138.10	9.8		0+69.0	#3561		4923-25 E Monro			2-24-55	
	2+0	146.2	138.20	8.0		1+41.6	#2562		4917-19 E Monro			2-24-55	
	3+0	145.2	138.30 out 138.50 in	6.9 6.7	3+05.2	2+28.0	#3974		4907 E Monro			3-24-55	
	4+0	144.3	138.60	5.7		3+32.0							
	5+0	143.7	138.70	5.0		4+19.0	4+17.5	C33551	4964 E Lincoln (Apt.)			7-13-72	
						5+08.5							
						5+77.0	5+60.6	5214 C37193	4845 E Monro	4964 E Lincoln (Apt.)			2-14-73
		141.5	138.78	2.7	5+82.6								
LINE #2	0+0	148.2	138.00	10.2	0+00 = 0+00 Line #1	WEST							
	1+0	148.6	138.40	10.2		0+11.5	#3560		4929-31 E Monro			2-24-55	
						0+68.0	#3559		4935-37 E Monro			2-24-55	
						4' 500.26 1+25.01	#26223-7 #3558		4941-43 R E Monro			5-11-92	
						1+85.0	#24536 #3557		4947-49 R E Monro			2-24-55	
	2+0	148.5	138.80	9.7		2+45.3	91-13767 #3556		4953-55 R E Monro			8-13-77	
		148.7	139.12	9.6	2+80.9							2-24-55	

NC Bldg Addition
 SOUR 2002-01210 4/25/02 6601 E Kellogg - overnight serv.

7339 Tap 6631 E Kellogg Carter Bldg 6-24-58