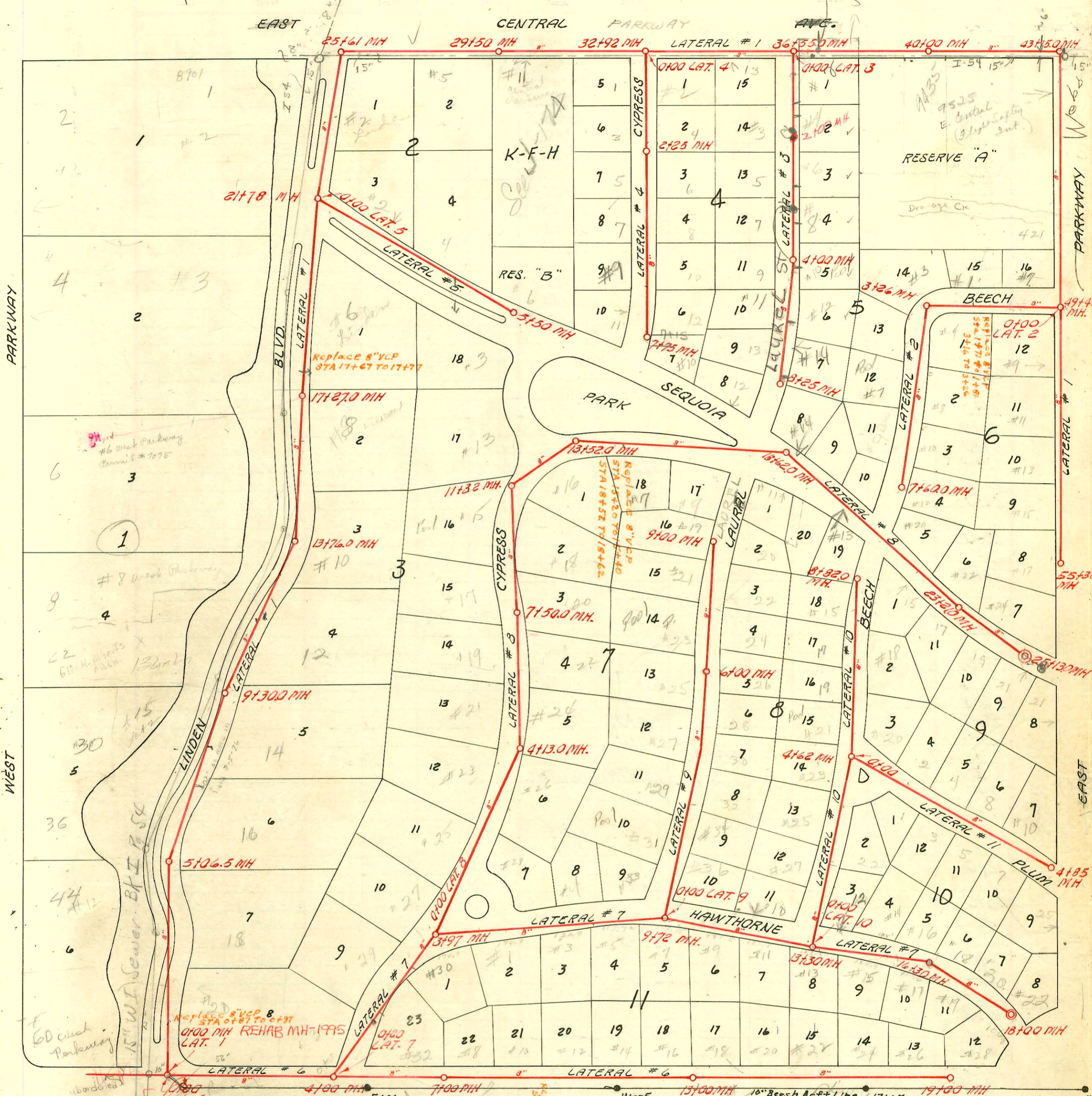


Also Refer To Book I-54

200 Scale

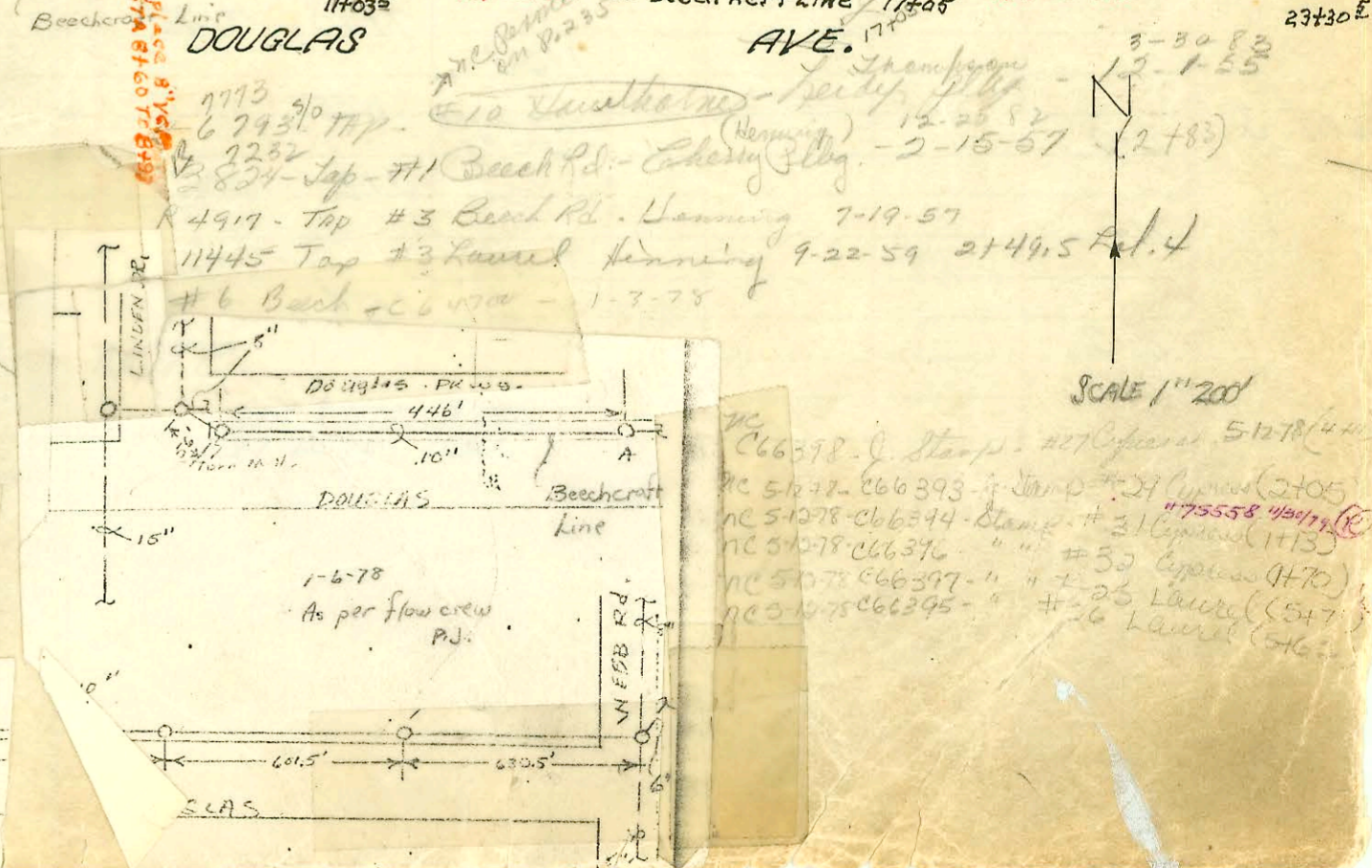
FORREST HILLS AREA

VAC. CENTRAL PARKWAY



RECON FOREST HILLS SEWER  
 BUILT BY: WB CARTER CONST CO.  
 PROJ. NO 468-76-245-80623-000-000-001  
 BOOKED 9-18-78

- #1566 Tap 6-10-52
- #3539 Top
- #24 Cypress
- #2133 Top #8 Linden
- #5224 Top-13 Hawthorne
- #1712 Top-4 Hawthorne
- #2441 Top-7 Beech Rd.
- #2750 Top-31 Central Dr.
- #2447 Top-7 Laurel Dr.
- #2443 Top-11 Hawthorne
- #3190 Top-6 Cypress Dr.
- #1537 Top-27 Laurel Dr.
- nc 665989-#29 Laurel-9 Stamp-4-19-78
- nc 665990-#30 Laurel
- nc 665991-#130 Laurel
- nc 665992-#27 Laurel
- nc 665993-#28 Laurel



SCALE 1"=200'

nc 666378-Stamp-#27 Cypress 5-12-78  
 nc 5672-666393-Stamp-#24 Laurel 2-20-55  
 nc 51078-666344-Stamp-#31 Cypress 11-13-55  
 nc 51078-666376-Stamp-#30 Cypress 11-13-55  
 nc 51078-666397-Stamp-#23 Cypress 11-13-55  
 nc 51078-666395-Stamp-#26 Laurel 5-12-78

CONSTRUCTION RECORD

SERVICE RECORD

STATION	ELEVATION		Depth	MANHOLE	4-INCH "Y" BRANCHES		No. of Permit		House Number		DATE OF PERMITS	
	Ground	Grade			North West	South East	North West	South East	North West	South East	North West	South East
39+0												
40+0				40+00		39+18 39+42 39+66 40+18.3 40+28.5 40+52.0 40+76.5		3111 #3110	9435 100 Central 9435 100 Central		4-13-81 4-13-81	
41+0						41+02 41+29 41+53 41+80						
42+0						42+24 42+54 42+75						
43+0			11.0	43+15	43+36.0		3629	9525 E Central			2-17-81	
44+0					44+94							
45+0												
46+0												
47+0						47+25.4 47+44	C57932 2001-00622 Crim. to 5179 Blind in Road Rd.	421 W. Well Rd. #7 C. Parkway P.R. St. 16, C 5		9-28-76 3-21-01 See next pg 2-10-82 See below 12-7-77		
48+0						Top						
49+0				49+45								
50+0					50+56							
51+0					51+35							
52+0												
53+0					53+ -		B6301	#15 East Parkway			9-7-66	at turning
54+0					55+07 55+27							
55+0				55+30								
LAT. 2 0+0 1+0				0+00 = 49+45 LAT. 1	NORTH SOUTH							
2+0					2+09 2+15		260837 #2225	#1 Beech Rd. Lot 13 Blk 5			4-25-77 10-27-49	
3+0				3+26	Top WEST EAST 3+78		59198	#3 Beech Rd.			11-2-49 12-21-76	
4+0					Top 4+81		#1246	Lot 13 Blk. 5			5-13-52	
5+0					4+87							
6+0					5+89							
7+0					6+23							
LAT. 3 0+0 1+0 2+0 3+0				7+60 0+00 = 36+55 in line #1	WEST EAST 0+71 0+62 1+47 1+62 1+74 1+65		#667 #5975 #65893 #6872 #65894 #4778 #65895 #65896	Lot 4 Blk 6 #2 Laural #3 Laural #4 Laural #6 Laural #5 Laural		6- - - 4-13-78 12-19-49 4-13-78 10-2-85 11-13-78 4-13-75		

LAT. 1  
CONTINUED

LAT. 2

LAT. 3

6882 - 6" surge to East Parkway, Hamlet, N.Y. 5-19-58  
 #7588 Top - #4 Laurel Dr. Lot 20k5 Shippo Bldg. (1+62) 7-22-58  
 #018826 - repair - #4 Beech - Indus Bldg. 4-15-70 (2+07)  
 C57932 - repair #9 Beech - Brennan 12-7-76  
 #5179 - #7 East Parkway (repair) 3/10/82 - see McJunk

2001-00622 - 3/21/01 - 7 N East Parkway (now Webb) J-Hawk Plog - Soil pipe extension for Bldg Addition - 4" SCH 40 tied back to existing sewer with sch 40 wye - 1 Tee w/ c, 1V22, 2 Kickouts, 1V45