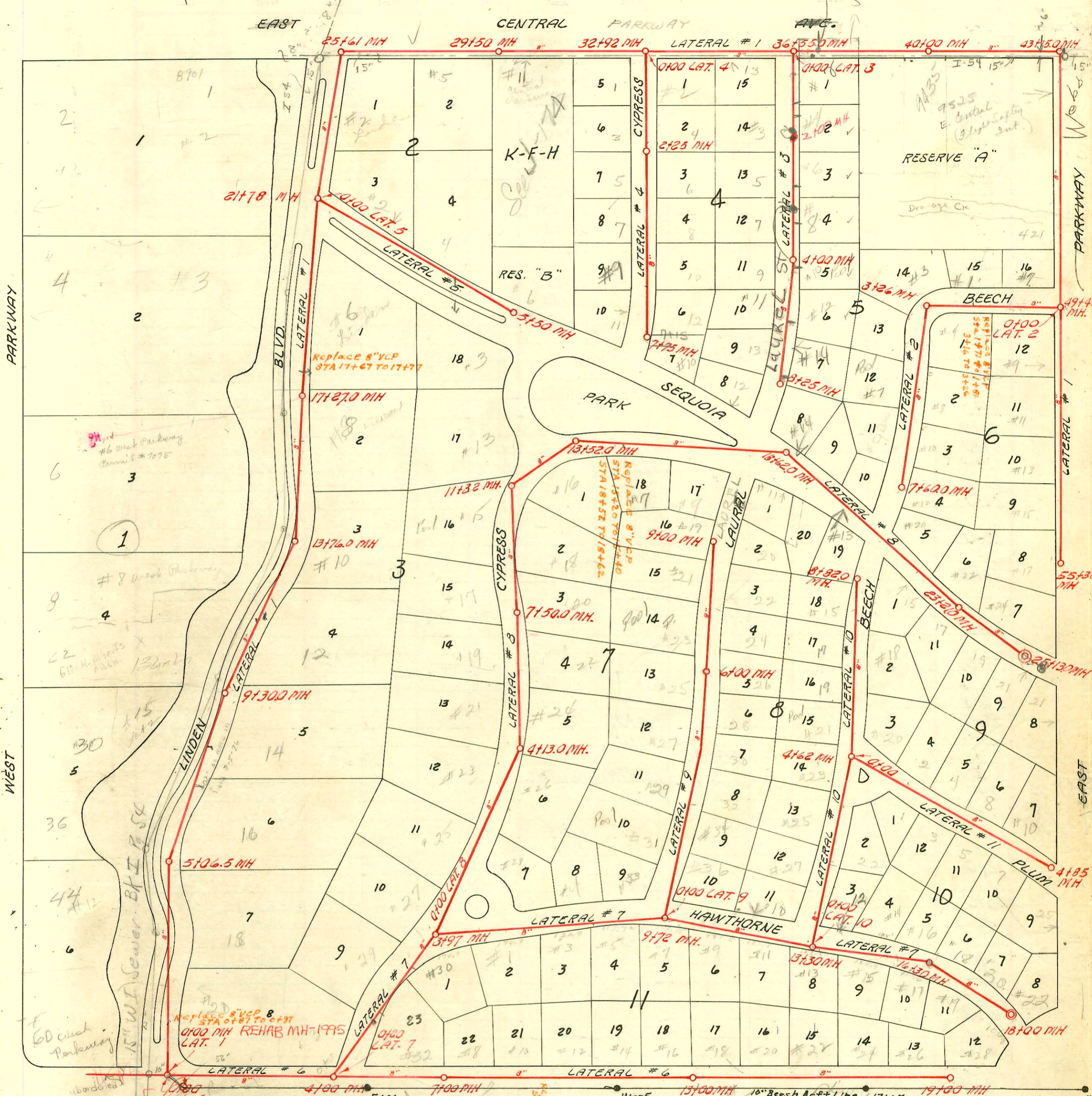


Also Refer To Book I-54

200 Scale

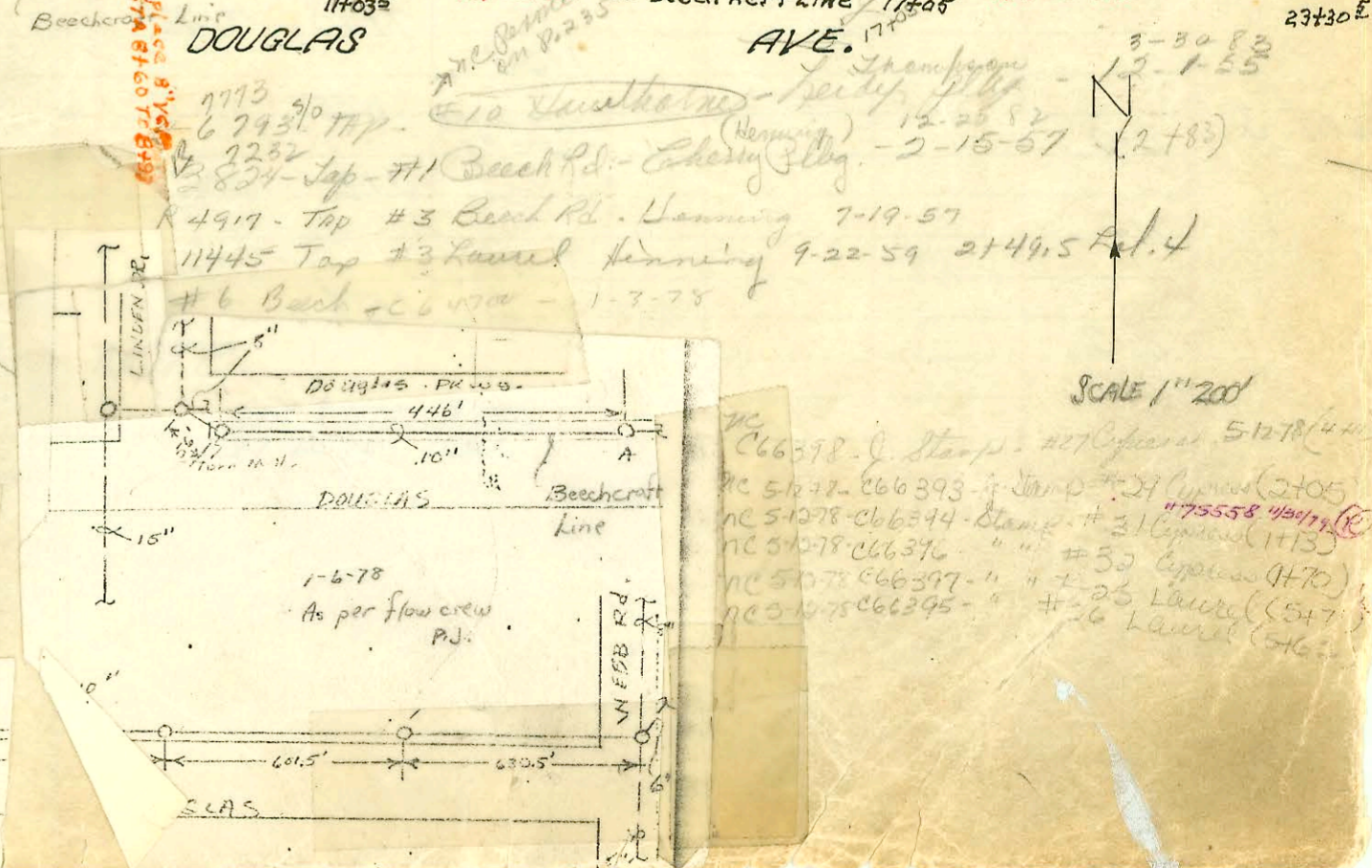
FORREST HILLS AREA

VAC. CENTRAL PARKWAY



RECON FOREST HILLS SEWER
 BUILT BY: WB CARTER CONST. CO.
 PROJ. NO. 468-76-245-80623-000-000-001
 BOOKED 9-18-78

- #1566 Tap 6-10-52
- #3539 Top
- #24 Cypress
- #2133 Top #8 Linden
- #5224 Top-13 Hawthorne
- #1712 Top-4 Hawthorne
- #2441 Top-7 Beech Rd.
- #2750 Top-31 Central Dr.
- #3447 Top-7 Laurel Dr.
- #3443 Top-11 Hawthorne
- #3190 Top-6 Cypress Dr.
- #1537 Top-27 Laurel Dr.
- nc 665989-#29 Laurel-9 Stamp-4-19-78
- nc 665990-#30 Laurel
- nc 665991-#130 Laurel
- nc 665992-#27 Laurel
- nc 665993-#28 Laurel



SCALE 1"=200'

nc 666378-Stamp-#27 Cypress-5-12-78

nc 5672-666393-Stamp-#24 Laurel-2-10-55

nc 51078-666344-Stamp-#31 Cypress-11-13-55

nc 51078-666376-Stamp-#30 Cypress-11-13-55

nc 51078-666397-Stamp-#23 Laurel-11-13-55

nc 51078-666395-Stamp-#26 Laurel-11-13-55

CONSTRUCTION RECORD

SERVICE RECORD

STATION	ELEVATION		Depth	MANHOLE	4-INCH "Y" BRANCHES		No. of Permit		House Number		DATE OF PERMITS	
	Ground	Grade			North West	South East	North West	South East	North West	South East	North West	South East
11+0					11+05							
12+0					Tap 13+58		#2527		#14 Douglas			9-29-50
13+0				13+00	13+58				#18 Douglas			
14+0					13+44							
15+0					14+70		#1610		#16 Douglas			9-13-50
16+0					Tap		#58964		#22 Douglas			12-6-76
17+0					15+88		6712					12-26-51
18+0					Tap		#325		#21 Douglas			4-12-50
					18+32		#1252		#26 Douglas			4-2-51
					18+94							
				19+00								
0+0				0+00 = 4+00	WEST		18-225 057		#32 R C.O.			11-23-48
1+0				Lat. 6	Tap	17+65	066393	29	Cypress			5-12-48
2+0					17+74		35914					12/6/71
3+0												
4+0												
5+0												
6+0												
7+0												
8+0												
9+0												
10+0												
11+0												
12+0												
13+0												
14+0												
15+0												
16+0												
17+0												
18+0												
0+0				0+00 = 4+00	WEST							
1+0				Lat. 7	Tap	01+59						
2+0					1+54							
3+0												

NOTE:

This project continues on page 236.

R-#14158 #15 Hawthorne (Data) Henning 7-8-85 inspection not made
 R-#93-13249-7 #30 Cypress - 4" SDR35 - Replaced line from stubout to leader 1/4" pf shallow. Connection is 37' from main and 55 ft. southwest of Northeast PL (6-1-93)
 R-24405 - #30 Cypress 12/4/89 - 4" SDR35 - 1/4" pf - replaced West branch to wye on east line

LAT. 6 CONTINUED

LAT. 7

LAT. 8

