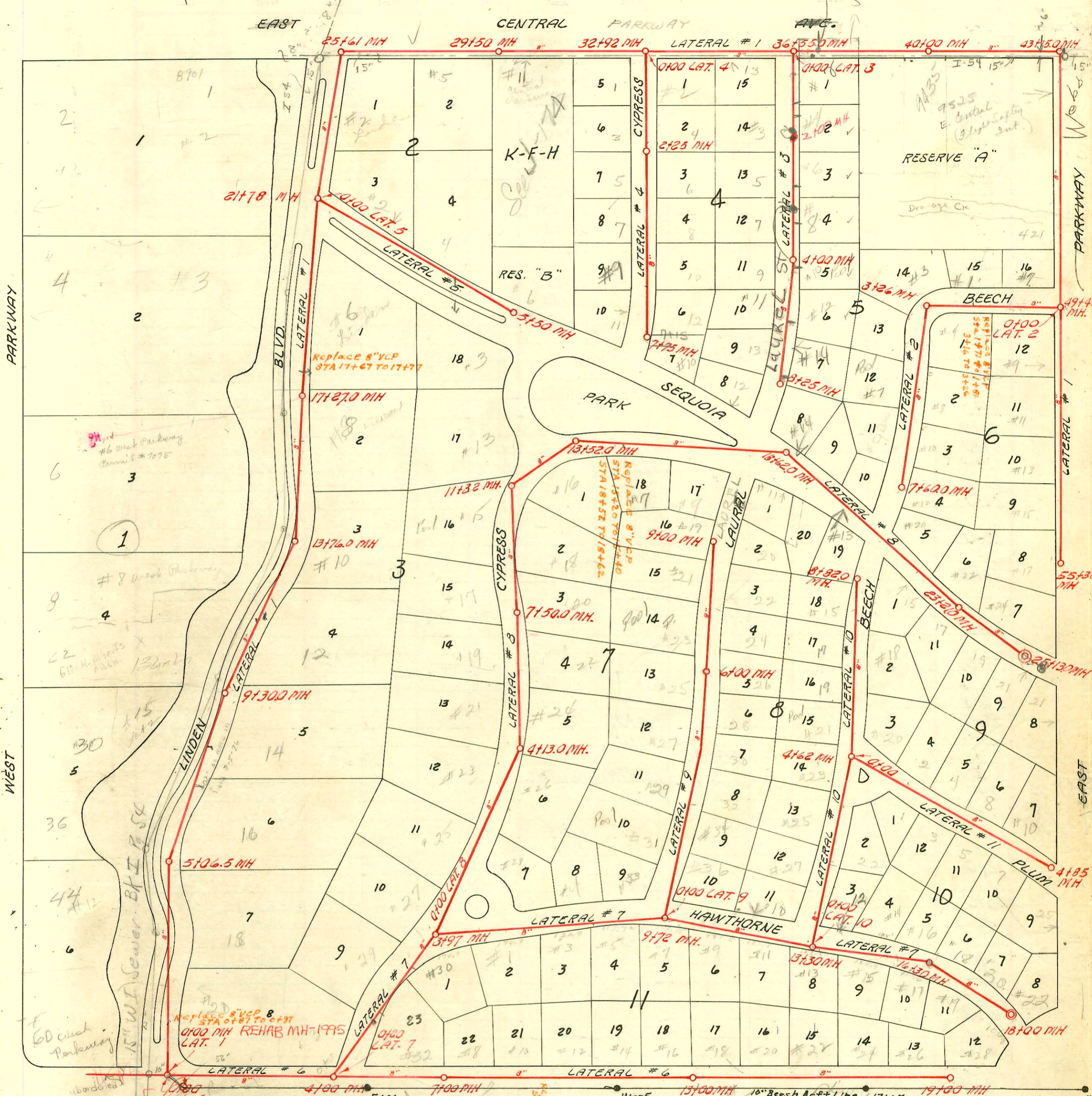


Also Refer To Book I-54

200 Scale

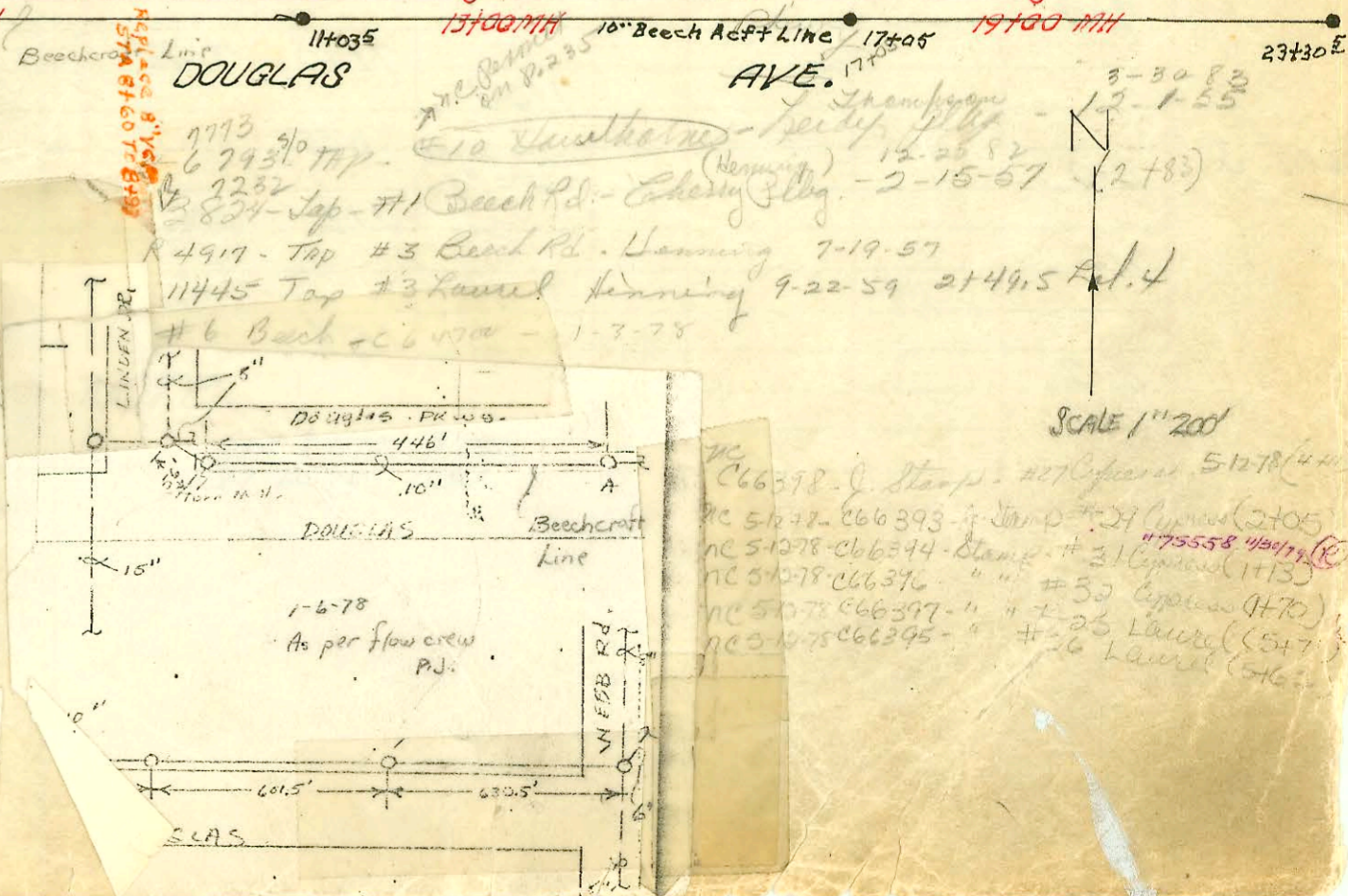
FORREST HILLS AREA

VAC. CENTRAL PARKWAY



RECON FOREST HILLS SEWER
 BUILT BY: W.B. CARTER CONST. CO.
 PROJ. NO. 468-76-245-80623-000-000-001
 BOOKED 9-18-78

- #1566 Tap
- #14 Douglas
- #5589 Top
- #24 Cypress
- #2133 Top #8 Linden
- #5224 Top - 13 Hawthorne
- #1712 Top - 4 Hawthorne
- #2441 Top - 7 Beech Rd.
- #2750 Top - 31 Central Dr.
- #2447 Top - 7 Laurel Dr.
- #2443 Top - 11 Hawthorne
- #3190 Top - 6 Cypress Dr.
- #1537 Top - 27 Laurel Dr.
- nc 665989 - #29 Laurel - 9 Stamp - 4-19-78
- nc 665990 - #30 Laurel -
- nc 665991 - #130 Laurel -
- nc 665992 - #27 Laurel -
- nc 665993 - #28 Laurel -



SCALE 1"=200'

- nc 666378 - Stamp - #27 Cypress - 5-12-78
- nc 5672 - 666393 - Stamp - #24 Laurel - 2-10-78
- nc 51078 - 666344 - Stamp - #31 Cypress - 11-13-78
- nc 51078 - 666376 - Stamp - #30 Cypress - 11-13-78
- nc 51078 - 666397 - Stamp - #23 Cypress - 11-13-78
- nc 51078 - 666395 - Stamp - #26 Laurel - 11-13-78

CONSTRUCTION RECORD

SERVICE RECORD

STATION	ELEVATION		Depth	MANHOLE	4-INCH "Y" BRANCHES		No. of Permit		House Number		DATE OF PERMITS	
	Ground	Grade			North West	South East	North West	South East	North West	South East	North West	South East
3+0					Tap 3+50		#201		23 Cypress		5-31-51	
4+0			7.0	4+13	3+34 (R) 3+59 Tap			17666 (R) 4802		26 Cypress		1-15-67 5-31-50
5+0												
6+0					5+36 Tap		#3227		#25 Cypress		7-14-51	
7+0					6+92 Tap	TAP 7+12	#3201	C25949	#12 (R) Cypress	#22 Cypress	7-20-51	7-22-71
8+0				7+50	(Stub W.) Tap		92-310-7 4886 #12300 #116	(11470) #17 Cypress	#17 (R) Cypress	Flow addn (addn)	6-3-72 6-5-51 1-2-81 3-23-51	
9+0												
10+0					9+83							
11+0				11+32		4" sch 40 PVC Tap	92-27100-7 #65991 3412		#13 R Cypress			10-15-92 8-19-78
12+0												
13+0				13+52	NORTH SOUTH			#1373		Lot 2 Blk. 7		3-7-50
14+0												
15+0					Wye. Un. ?							
16+0												
17+0					?			#2574		Lot 17 Blk. 7		
18+0				18+62	18+59.0				#14 R Cypress		11-6-79	
19+0					19+55							
20+0												
21+0												
22+0					21+92			671267	#15 R Cypress		4-16-79	
23+0				23+21								
24+0					23+52							
25+0					23+63							
26+0					24+84							
27+0					24+93							
28+0			7'	25+13.0	25+08			67056	#17 R Cypress		6-23-78	
29+0				0+100 = 9+72 Lat. 7	WEST EAST							
30+0			8.5		0+700			665840	#13 R Cypress		4-13-78	
31+0					1+22							
32+0					1+77	1+69		665891	#3 Cypress	#34 Cypress	4-13-78	
33+0					Tap	1-199		#65989 2727	#29 Cypress	#34 Cypress	7-19-78 7-19-50	4-13-78
34+0					2+52			665892	#32 Cypress		4-19-78	
35+0					2+68			665888	#32 Cypress		4-19-78	
36+0					3+75			665970	#30 Cypress		4-19-78	4-8
37+0					3+81							
38+0					Tap			#65992 5056	#27 Cypress		4-19-78 3-6-51	
39+0					4+59			665993	#28 Cypress		4-19-78	
40+0												
41+0					5+09			#66277 3722	#25 Cypress		5-12-78 7-17-51	
42+0				6+00	5+61			66295 391	#20 Cypress		5-12-78 7-9-78	
43+0					Tap			#3721	Lot 14 Blk. 7		1-17-51	
44+0					6+42			#332	Lot 8 Blk. 8		7-7-48	
45+0					6+63							

LAT. 8
CONTINUED

LAT. 9

NOTE: This project continues on page 237.
 # B-165 - Tap #34 Laurel Drive - Vermontypoldt - 10-2-63 (1+39)
 # C-18510 - #17 Cypress - (addition) Matthews Pkg. - 3-25-70

2001-02905-22 E SE QUOIA DR 11/4/01 Wichita, EXC- 4" SCH 40 Predco saddle 39.8' E of MH 237 21(2 2181)

1H22 1V22