

# 848 Top #5 Doyle, French 10-1-47  
 # 118 Top #67 Mission # Shephard 6-1-47

# EASTBOROUGH ESTATES SAN. SEWER

PRIVATE CONTRACT

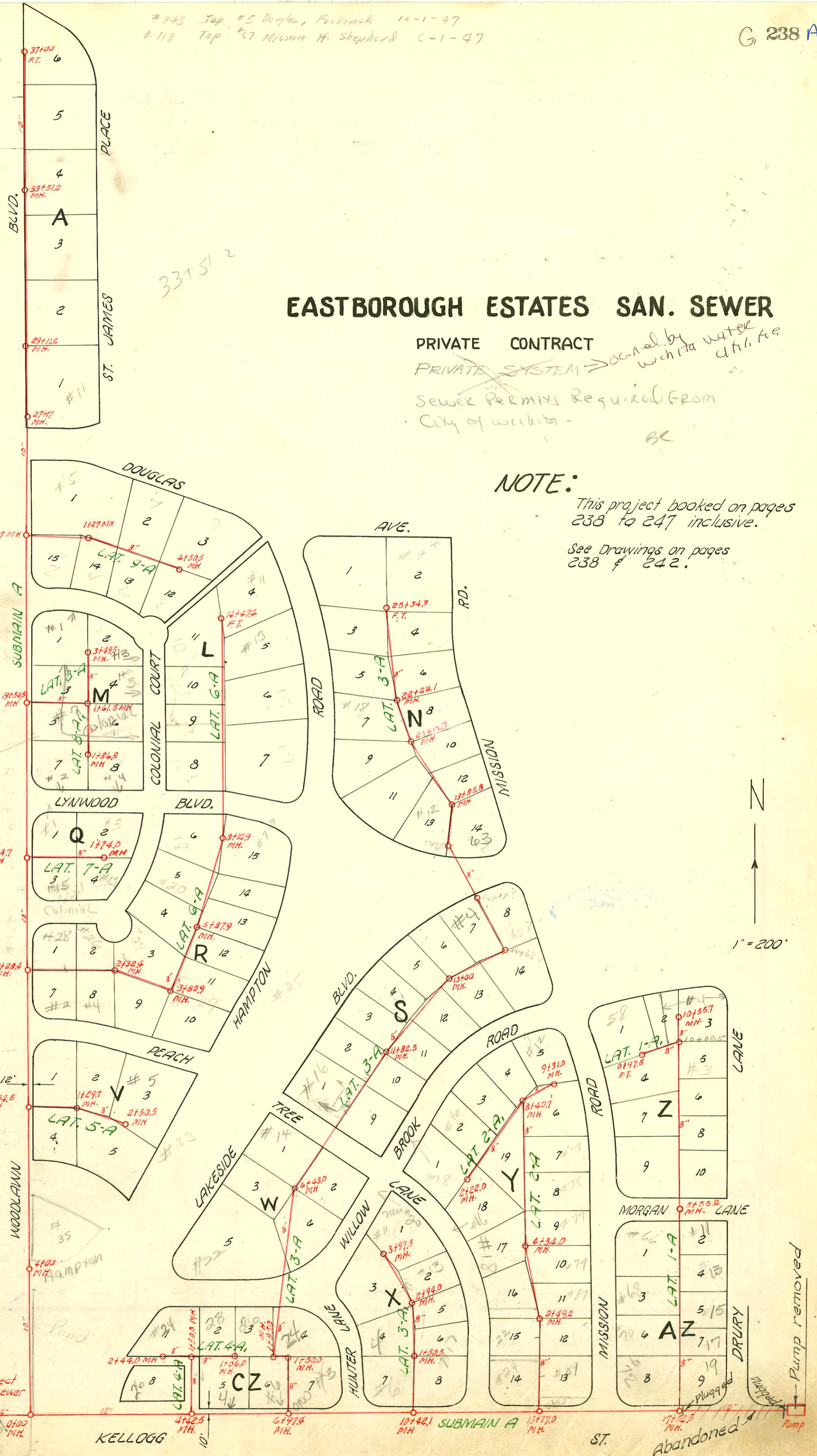
PRIVATE SYSTEM  $\rightarrow$  owned by water utility

Sewer Permits Required From City of Wichita -

## NOTE:

This project booked on pages 238 to 247 inclusive.

See Drawings on pages 238 & 242.



# 7 Colonial has Lots 3, 5, 6

6355 willowbank

6300 E. Kellogg Church of England 8" sewer line in Kellogg

12" main to connect with Wichita sewer system.

Abandoned

Pump removed

CONSTRUCTION RECORD

SERVICE RECORD

STATION	ELEVATION		Depth	MANHOLE	4-INCH "Y" BRANCHES		No. of Permit		House Number		DATE OF PERMITS	
	Ground	Grade			North West	South East	North West	South East	North West	South East	North West	South East
SUBMAIN A 12" IN KELLOGG ST												
0+0												
1+0												
2+0												
3+0												
4+0	145.7	156.1	9.6	4+42.3								
5+0												
6+0	168.4	156.8	11.6	6+97.4								
7+0												
8+0												
9+0												
10+0												
11+0					10+42.1							
12+0												
13+0	172.1	-		13+77.0								
14+0												
15+0												
16+0												
17+0					17+52.5							
18+0												
19+0												
20+0				Pump 20+46 ±								
LAT. 1-A 8"				0+00 = 17+52.5 Subm. A	0+60.5 Top	(Seal off (Lat 89.5) Top	#15855 6646	#2001- 05957 6.163	#72 Mission	#17 Drury	12-9-85 10-6-53	4-20-01 8-13-53
1+0					0+60.5 Top	0+63.0 Top	#1260 5809	2001-1806 B3817	#70 Mission	#17 Drury		7-30-65
2+0					1+65.0 Tap	1+67.5 Tap	#6995		#70 Mission		7-15-53 7-30-53	
3+0					2+61 Tap	2+63.5 Tap	#1260	2001-3991	#70 Mission	#15 Drury		3-15-74
4+0					3+61.2 Tap	3+63.7 Tap		10993		#13 Drury	6-2-54	7-24-59
5+0					4+59.2 Tap	4+61.7 Tap	#1230	#7228	#66 Mission	#11 Drury	5-12-52	1-23-52
6+0	170.7	162.3	8.4	5+55.2	3+4+98.2 Tap		264770			#11 Drury		1-6-78
7+0					6+52.1 Tap	6+54.6 Tap		#1653		Drury		2-24-48
8+0					7+57.6 Tap	7+60.1 Tap		#4866		#7 Drury		6-5-51
9+0					8+58.3 Tap	8+60.8 Tap	#524	#5304	Mission	Drury En.	7-29-47	7-21-51
10+0					9+57.8 Tap	9+60.3 Tap	#272	#8860	Mission	#3 Drury	6-23-47	2-13-64
	173.9	164.1	9.8	10+08.5	10+31.2 10+55.7	10+53.7 Stub out of MH						
LAT. 1-A				0+00 = 10+08.5 in Lat 1-A	NORTH 0+26	SOUTH 0+29						
				F.T. 0+97.5	WEST	EAST						
LAT. 2-A 8"				0+00 = 13+77 in Subm. A								
0+0	172.1	161.9	10.2									
1+0					0+94.0 Tap	0+96.5 Tap	2001-01464 C193		#24 SIO		6-13-01 12-11-68	
2+0					1+96.3 Tap	1+98.8 Tap	#242	#505		#83 Mission		1-24-62 7-20-48
3+0	172.8	162.1	10.7	2+49.2	2+94.5 Tap	2+97.0 Tap		#1850		#7 Mission		6-21-54
4+0					3+94.0 Tap	3+96.3 Tap	1357	#822		#7 Mission		5-5-54
	173.8	163.7	10.1	4+54.0							9-25-80	

NOTE: This project Continues on page 239

#6031 private tap - 6300 E. Kellerbrook - 8-17-55 - Ripston Drury - 711 Wilkeson School  
 (addition to 6355 Wilkeson School)  
 #835 Tap #68 Mission Lane Dodds 3-31-59 3+52.7  
 10459 Tap #68 Mission Dodds 6-15-59 3+03.2 1A  
 11053 Tap #9 Ripston Dodds 8-5-59 30+30.2  
 #C4631 - private tap - 6300 E. Kellogg - Maple Church Rd. Ripston - 8-28-61  
 Cont. to 8" line at base N. of Kellogg - approx 250 ft. W. of roadline  
 (85')  
 #463780 - #20 - 10-27-77 - Ripston