

# 848 Top #5 Doyle, French 10-1-47  
 # 118 Top #67 Mission # Shephard 6-1-47

# EASTBOROUGH ESTATES SAN. SEWER

PRIVATE CONTRACT

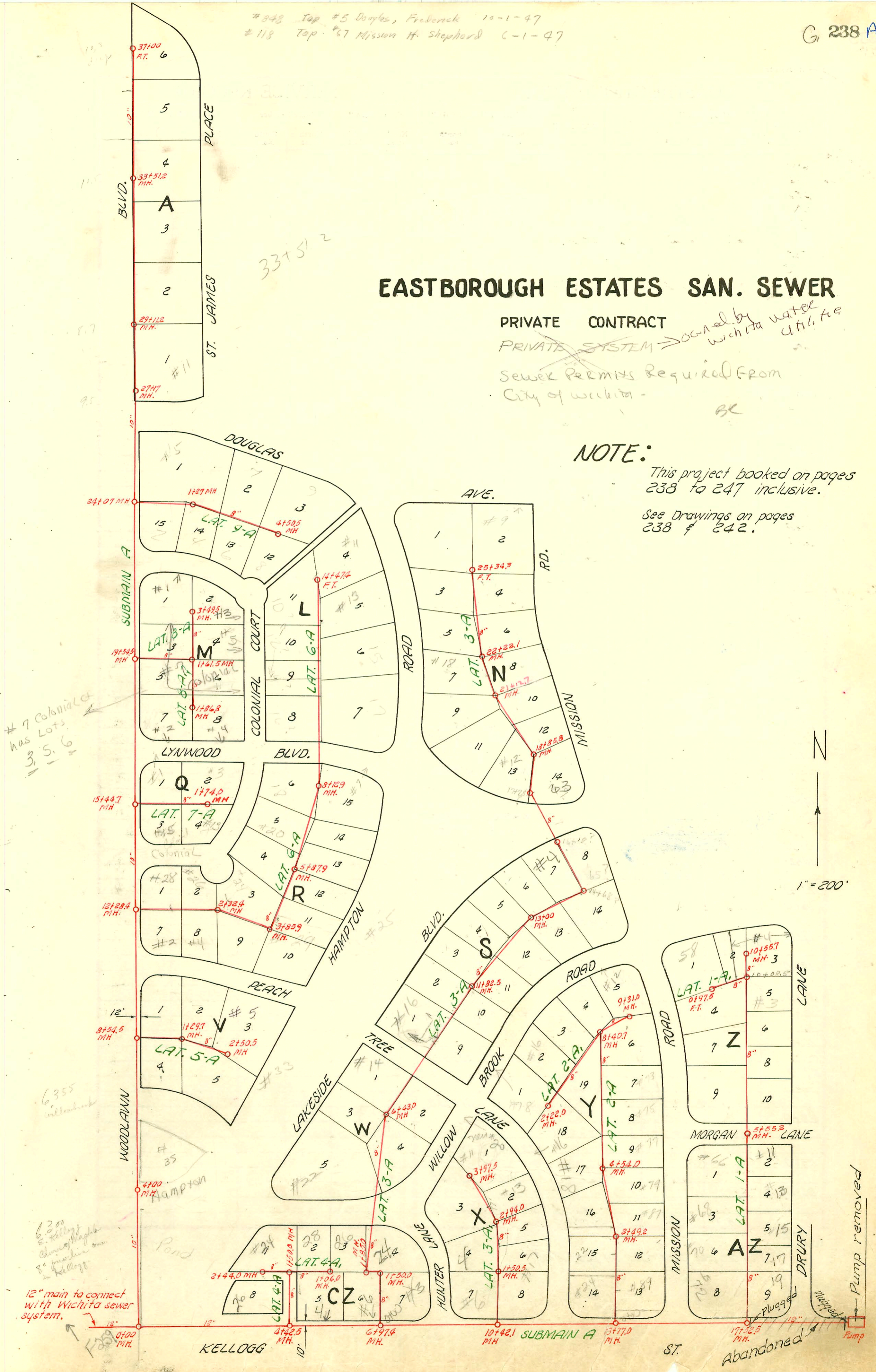
PRIVATE SYSTEM  $\rightarrow$  owned by Wichita water utility

Sewer Permits Required From City of Wichita -

## NOTE:

This project booked on pages 238 to 247 inclusive.

See Drawings on pages 238 & 242.



# 7 Colonial has Lots 3, 5, 6

6.355 willowbank

6.300 E. Kellogg Church of England 8" sewer line in Kellogg

12" main to connect with Wichita sewer system.



1" = 200'

Pump removed  
 Abandoned

CONSTRUCTION RECORD

SERVICE RECORD

STATION	ELEVATION		Depth	MANHOLE	4-INCH "Y" BRANCHES		No. of Permit		House Number		DATE OF PERMITS	
	Ground	Grade			North West	South East	North West	South East	North West	South East	North West	South East
				4+54.0								
5+0					5+00.8	5+03.3	#6766		77 Mission			10-24-53
					5+98.6				75 Mission			5-13-48
6+0						Tap	#2448					
						6+01.1						
7+0						Tap	#4103		73 Mission			3-15-51
8+0					7+01.3	7+03.8						
					8+01.3	8+05.3	#2448		Lot 6 Bk. Y			5-13-48
	173.8	165.3	8.5	8+40.7	NORTH	SOUTH						
					8+81.0	8+83.5						
9+0				9+31.0	Tap		#2490		#12 Willowbrook			9-12-52
					WEST	EAST						
0+0				0+00 = 8+40.7 in Lat. 2-A	0+48.7	0+51.2	#24685		#16 B Willowbrook			1-24-50
1+0					Tap		#24685					9-20-50
					1+49.2	1+51.7						
2+0				2+22.0	Tap	Tap	#2279	#1628	#18 Willowbrook	#16 Reach T.		10-31-49
												6-14-5
0+0	168.4	158.79	9.6	0+00 = 6+97.4 in Subm. 19	3) Tap 0+96.0	5) 0+98.5	20005847 #623	2005123 #2324	#6510 Kelly	#3 Hunter Blk. CC		8-17-00
1+0												7-14-50
												4-4-51
1+0	168.9	159.2	9.7	1+50					Lot 43 Blk. CC			5-12-50
	168.1	159.4	8.7	1+85								
2+0									#220 Lakeside			1-30-74
3+0					Tap (4+04.1)		#630					6-27-47
4+0												
5+0												
6+0												
7+0	168.7	160.7	8.0	6+43.0	Tap		#2670		Lot 1 Blk. W			10-12-50
8+0					8+91.3	8+93.8	#2440	#999	Lot 1 Blk. S	Lot 9 Blk. K		5-12-48
9+0												3-24-48
10+0					9+81		23536		#16 Lakeside			7-14-89
					10+52.0 Tap		23379		#16 Lakeside			6-21-89
					10+51.7	10+03.2						
11+0					11+01.1	11+03.6		#1766		#19 Willowbrook		7-6-50
12+0	172.0	162.4	9.6	11+82.5								
					12+29.4	12+31.9						
					12+70.5	12+73.0						
13+00	173.4	163.3	10.1	13+00								
14+0	174.8	165.8	9.0	14+68.7								
15+0												
16+0				16+18.0								
17+0	174.8	166.9	7.9	17+78.7								
18+0	175.5	167.1	8.4	18+85.8								
19+0					Tap		#2776		#10 Cypress			10-19-50
					19+70.8							
						19+73.3						
20+0					20+96.9	20+99.4						
21+0				21+12.7								
					21+51.7	21+53.2	2003-0317		#18 Bk. Hampton			12-1-52
22+0	176.6	168.3	8.3	22+22.1	Tap		#1268		#16 Hampton			1-4-47
					22+33.7	22+36.2						
23+0					23+11.0	23+13.5						
24+0					24+11.2	24+13.7						
	178.9	170.6	8.3	F.T. 25+34.3								

NOTE: This project continues on page 240.

Set 2001 02976 11-20-01 #26 Willowbrook Mills

#16 Reach Tree Ln - 8-14-86 James Beckford (replaced under pool)

SWR 2001-02973 11-20-01 #24 Lakeside<sup>30</sup> - H.D. Mills - sealed w/ concrete (as meas given)

3/6 SW R2002-00067-118/2-17 E Peach Tree Ln - HD Mills - sealed w/ concrete

SWR 2002-00262 1-29-02 #26 Lakeside<sup>30</sup> - H.D. Mills -