

# 848 Top #5 Doyle, French 10-1-47  
 # 118 Top #67 Mission # Shephard 6-1-47

# EASTBOROUGH ESTATES SAN. SEWER

PRIVATE CONTRACT

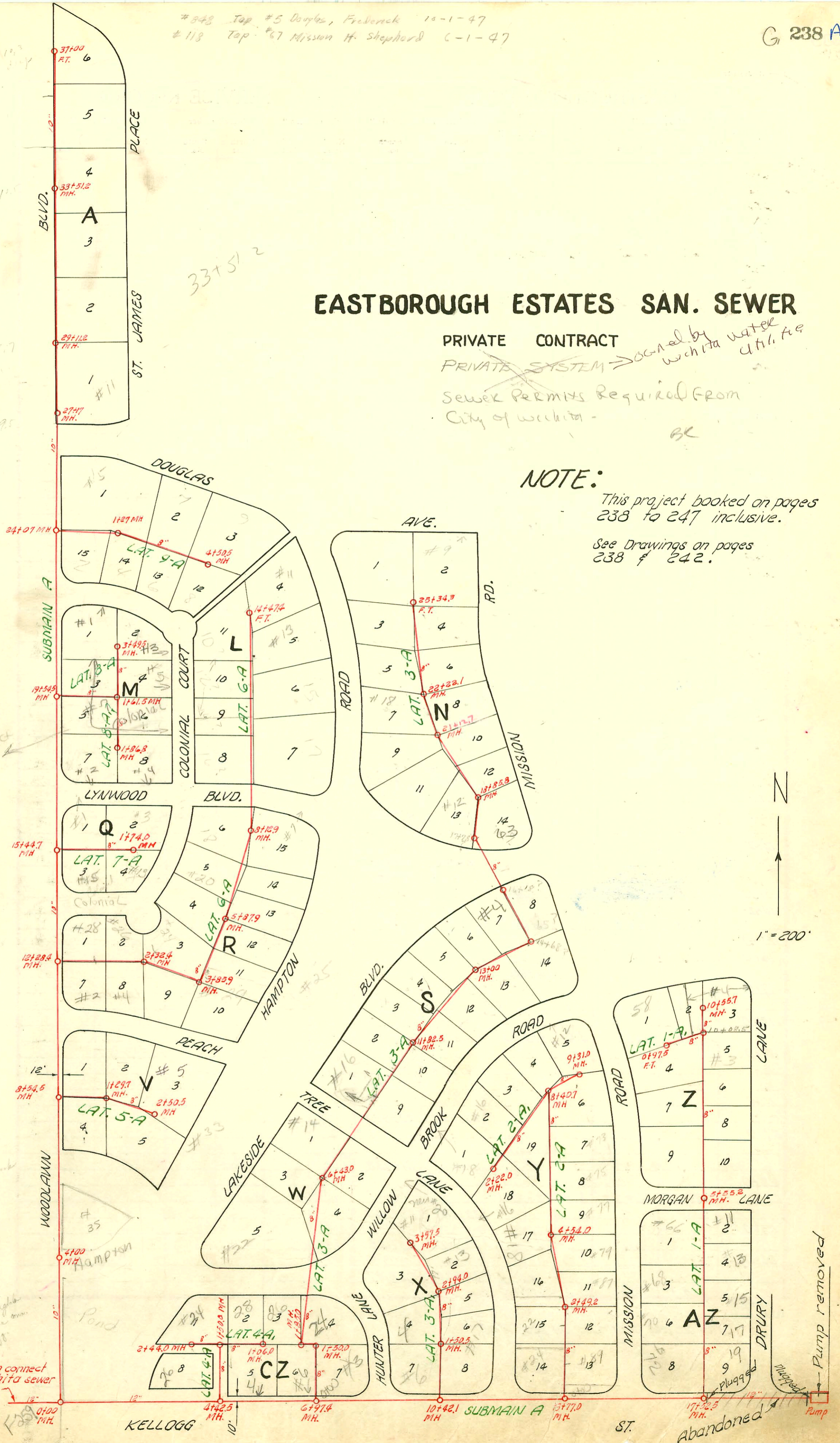
PRIVATE SYSTEM *Owned by water utility*

Sewer Permits Required From City of Wichita

## NOTE:

This project booked on pages 238 to 247 inclusive.

See Drawings on pages 238 & 242.



# 7 Colonial has Lots 3, 5, 6

6355 willowbank

6300 E. Kellogg Church of England 8" sewerline in Kellogg

12" main to connect with Wichita sewer system.

Abandoned

Pump removed

CONSTRUCTION RECORD							SERVICE RECORD					
STATION	ELEVATION		Depth	MANHOLE	4-INCH "Y" BRANCHES		No. of Permit		House Number		DATE OF PERMITS	
	Ground	Grade			North West	South East	North West	South East	North West	South East	North West	South East
LAT. 3-A 0+0	-	161.8	-	0+00 = 10+42.1	Tap 0+95.7	Tap 0+98.2	4203	2715	Lot 7 Blk. X	Lot 8 Blk. X	3-27-51	9-20-50
1+0	171.5	162.2	9.3	1+50.5	Tap 1+92.0	Tap 1+94.5	#203 one	#1416 post 8/26/51	Lot 4 Blk. X	#1730 Peach T	6-13-51 6-10-49	1-8-52 5-28-52
2+0					2+84.7	2+89.2		#4165		#15 Peach T		3-23-51
3+0	172.2	163.0	9.2	2+94.0	3+49.3	3+52 tap 3+51.8		#2217		#13 Peach T		3-6-52
				3+97.5				#1733		#11 Peach T		12-14-48
LAT. 4-A 0+0				0+00 = 4+42.5 in Subm. A		Tap		#5152		#9 No. 1099		7-6-51
1+0	166.4	156.7	9.7	1+50.0	NORTH 1+77.2	SOUTH 1+79.7						
2+0					2+29.8	2+33.3						
	165.1	157.1	8.0	2+44.0								
LAT. 4-A 0+0				0+00 = 1+50.0 in Lat. 4-A	0+26.6	0+28.1						
1+0	167.3	157.3	10.0	1+06.0	0+94.2	0+96.7						
LAT. 5-A 0+0				0+00 = 8+54.5 in SUBM. A	NORTH 0+24.3	SOUTH 0+26.93	#1634	#1620	Woodlawn	Lot 4 Blk. KV	12-2-48	
1+0					1+11.2	1+13.7						2-17-48
2+0	167.6	158.7	8.9	1+29.7	2+41.7	2+44.2	#2338	#1276	Lot 38 Blk. V	#33 Hampton	10-24-50	6-12-50
				2+50.9								
LAT. 6-A 0+0	172.0	159.5	12.5	0+00 = 12+28.4 in SUB. A	Tap 1+02.5		#2943 1320		#23 R Colonial		110.96	4-9-51
1+0						1+05.0		#14957 #137		#2 Peach T		10-17-85 6-9-47
2+0					2+17.8	2+20.5	3367	#206	#26 Colonial	Lot 9 Blk R	5-27-81	2-26-52
	176.7	160.2	16.5	2+32.4	2+50.4	2+52.9	8884	#1410	#24 R Colonial		8-2-83	1-9-48
3+0					3+67.0	3+69.5		10900		#27 Hampton		5-11-84
4+0	169.5	160.5	9.0	3+85.9	WEST 4+13.1	EAST 4+15.6		10924		Lot 11 Blk. R		5-11-84
					4+93.9	4+96.4		#220				4-27-48
5+0					5+98.4			#3143		#25 Hampton		11-10-52
6+0						6+00.9						
7+0					6+71.4	6+73.9			#20 Colonial			
8+0					7+95.9	7+98.4						
9+0	172.6	164.3	8.3	8+12.9	Tap			#963		#7 Lynwood		9-21-48
10+0					9+87.9	9+90.4						
11+0												
12+0					11+16.1	11+18.6						
					12+02.4	12+04.9	99-01076 12100		#12 R Colonial		11-2-74	9-25-84
					12+78.6	12+81.1						
13+0					13+29.4	13+31.9		9391		#13 Hampton		2-25-59
14+0					14+31.5	14+33.0						
	178.5	170.00	8.5	14+47.4 F.T.								

NOTE: This project continues on page 241.

