

848 Top #5 Doyle, French 10-1-47
 # 118 Top #67 Mission # Shephard 6-1-47

EASTBOROUGH ESTATES SAN. SEWER

PRIVATE CONTRACT

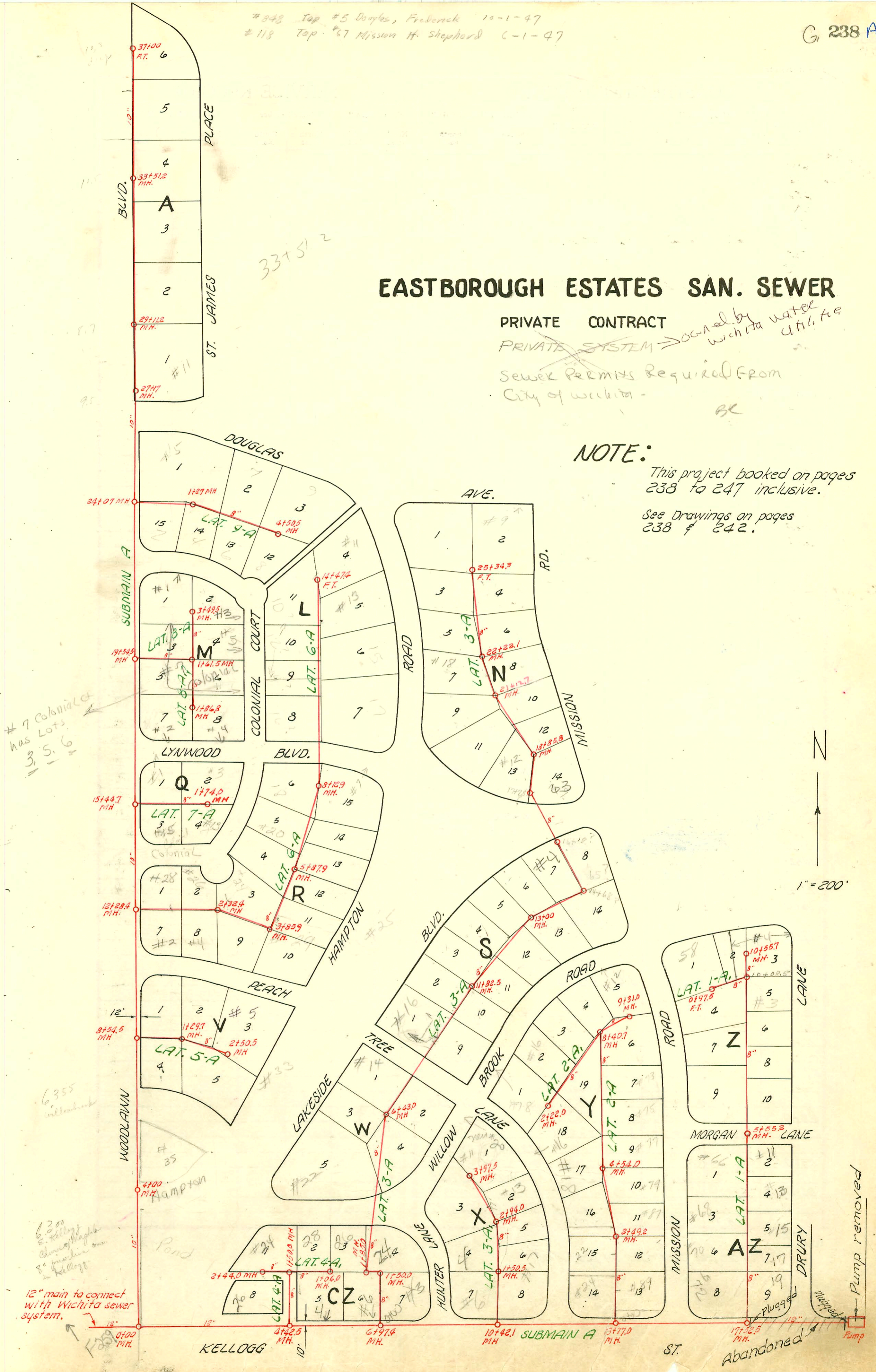
PRIVATE SYSTEM *Owned by water utility*

Sewer Permits Required From City of Wichita

NOTE:

This project booked on pages 238 to 247 inclusive.

See Drawings on pages 238 & 242.



7 Colonial has Lots 3, 5, 6

6355 willowbank

6300 E. Kellogg Church of England 8" sewer line in Kellogg

12" main to connect with Wichita sewer system.



1" = 200'

Pump removed

Abandoned

CONSTRUCTION RECORD

SERVICE RECORD

STATION	ELEVATION		Depth	MANHOLE	4-INCH "Y" BRANCHES		No. of Permit		House Number		DATE OF PERMITS	
	Ground	Grade			North West	South East	North West	South East	North West	South East	North West	South East
LAT. 7-A	0+0			0+00=15+44.7 in Sub. A	Tap	Tap	#1792	#2419	#1 - Lyndon	#15 Colonial	7-27-50	9-20-50
	1+0				0+20.3	0+22.8						
					1+51.25	1+53.75		#1128		#12 Colonial		6-9-54
	173.7	165.0	8.7	1+74		m. H. Tap	#2551	#692	#3 Lyndon	#13 Colonial	5-13-68	7-25-86
LAT. 8-A	0+0			0+00=19+54.5 in Sub. A								
	1+0				0+24.4	0+26.9						
	177.0	167.6	9.4	1+61.5	WEST	EAST						
					1+76.8	1+79.3		#16138		#5 Colonial		10-2-69
	2+0				2+56.5	2+59						
	3+0				4" Sch. 40 3+03.5	Tap	2847	#6026		#7 Colonial		6-15-95
					3+49.5							10-3-51
LAT. 8-A	0+0			0+00=1+61.5 in Lat. 8-A								
	1+0				0+21.1	0+23.6		2822		#7 Colonial		5-30-95
					0+80.0	0+82.5						
	178.4	168.2	10.2	1+86.8	Tap	1+66.5	#2733		#2 Lyndon		10-16-50	
LAT. 9-A	0+0			0+00=2+07 in Sub. A	NORTH	SOUTH						
	1+0				1+21.8	1+19.3	#64465		#2 Lyndon		12-14-77	
	178.1	169.6	8.5	1+67.5	1+27.0	1+29.6	#626		#1 Douglas		4-14-54	
					1+80.8	1+83.5						
	2+0				2+70.9	2+68.4						
	3+0				3+33.7	3+36.2						
	4+0				4+02	4+04.8	#1562		#5 Douglas		9-12-49	
	179.5	170.5	9.0	4+50.5								
SUBMAIN A	0+0			0+00		EAST						
10" in	1+0					0+44.0						
WOODLAWN BLVD.	2+0					1+00						
	3+0					1+50						
	4+0	163.0	7.1	4+00		2+01						
	5+0	155.9				2+49						
	6+0					3+ -						
	7+0					Tap	#2856		#35 Hampton Rd		10-26-50	
	8+0					4+51.0						
	9+0					5+00						
	10+0					5+50						
	11+0					6+00						
	12+0	163.8	10.9	8+54.5		7+35.5	(w/perm) 21227		#24 Woodlawn		10-5-70	
	13+0	172.0	12.5	12+28.4								
	14+0											
	15+0											
	16+0	174.9	14.2	15+44.7								
	17+0											
	18+0											
	19+0	177.1		19+54.5								
	20+0											
	21+0											

2822 5-30-95 # 7 Colonial Ct - Rep -

NOTE: This project continues on page 242.

