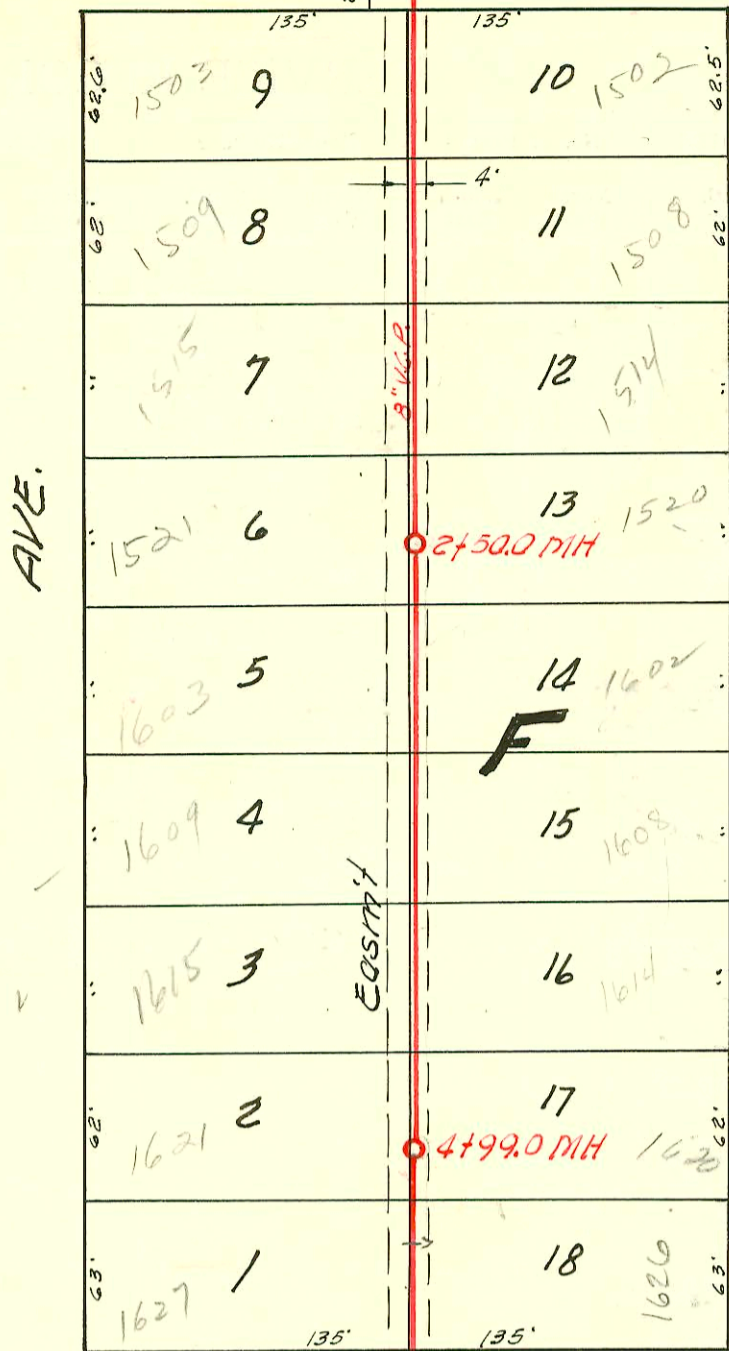
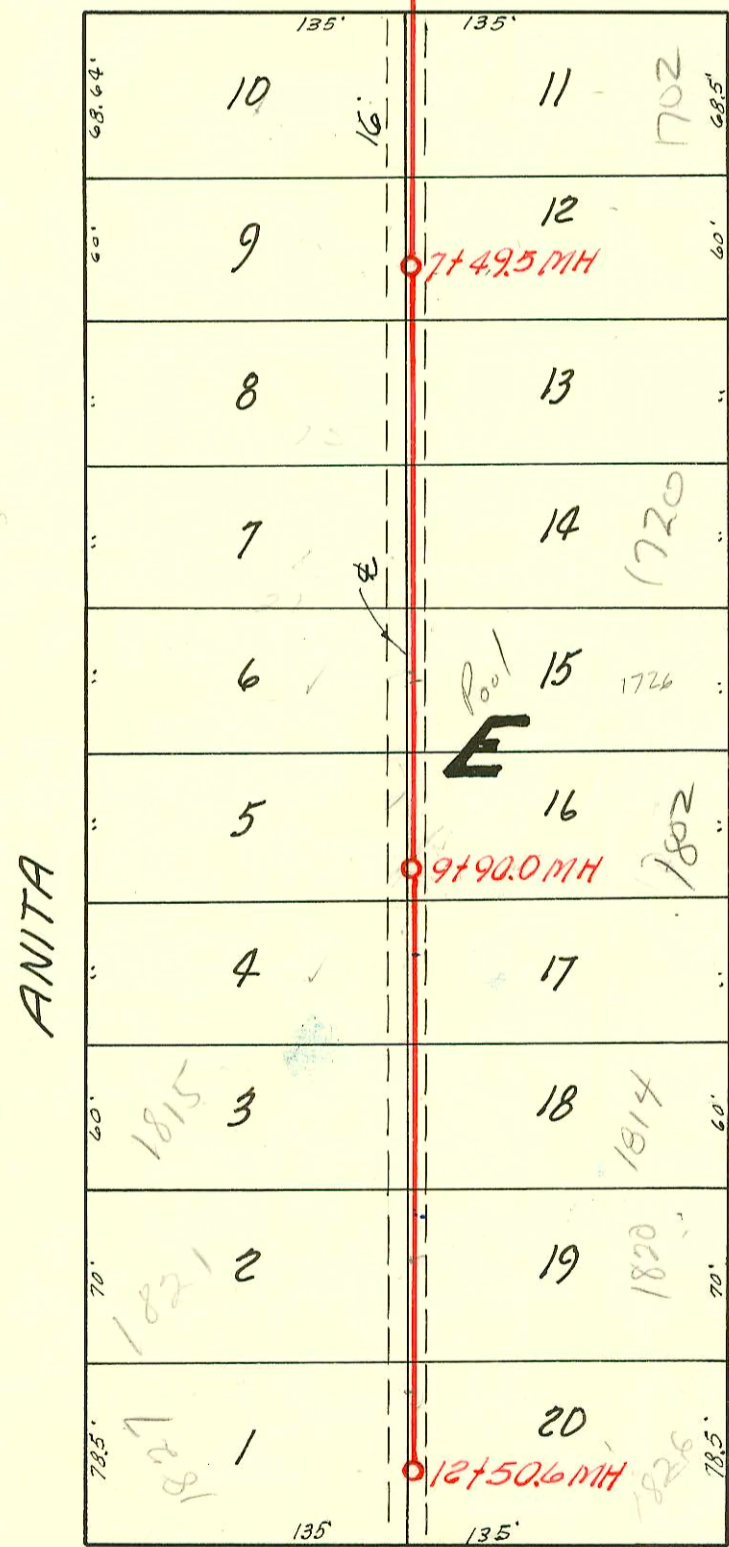


0+00 Existing MH.



MILLWOOD AVE.



GLENN AVE.



1" = 80'

LAT. 7, SUB. 2, S. S. 22

UTILITY CONT. INC., MAY 17, 1955

BK. NO. K-24,

PROJ. NO. C 25-6

CONSTRUCTION RECORD						SERVICE RECORD						
STATION	ELEVATION		Depth	MANHOLE	4-INCH "Y" BRANCHES		No. of Permit		House Number		DATE OF PERMITS	
	Ground	Grade			North West	South East	North West	South East	North West	South East	North West	South East
0+0	98.1	89.50	8.6	0+00 Existg MH	0+43.5	0+46.5	93145127	10125	1503R	1502	6-9-53	4-21-59
1+0	98.4	89.90	8.5		1+04.0	1+07.0	6549	6548	1509	1508	4-8-58	4-8-58
					1+66.0	1+69.0	6073	6072	1515	1515	1-30-58	1-30-58
2+0	98.5	90.30	8.2		2+28.0	2+31.0	7333	2117	1521	1520	6-20-58	12-19-56
	98.3	90.50	7.8	2+50.0	2+90.0	2+93.0	7475	2818	1603	1602	7-28-54	10-17-56
3+0	98.1	90.70	7.4		3+51.3	3+54.3	9344	#2055	1609	1608	2-12-59	8-20-56
4+0	97.9	91.10	6.8		4+14.0	4+17.0	9346	#2056	1615	1614	2-12-59	8-20-56
					4+76.0	4+79.0	6362		1621		3-17-58	
5+0	98.0	91.50	6.5	4+99.0	5+37.0	5+40.0	10126	#5571	1637	1636	4-21-59	7-13-55
6+0	98.0	91.90	6.1		6+62.0	6+65.0		#4795		1702		5-17-55
7+0	97.9	92.30	5.6		7+23.0	7+26.0	#1459	#4796	1707	1706	2-21-56	5-17-55
	97.8	92.50	5.3	7+49.5	7+84.0	7+87.0	#256	#4797	1715	1714	3-19-56	5-17-55
8+0	98.1	92.70	5.4		8+42.0	8+45.0	#255	1999-01505	1721	1720	3-19-56	5-17-55
9+0	98.0	93.10	4.9		9+08.0	9+11.0	#783	#4799	1727	1726	2-13-56	5-17-55
					9+68.5	9+71.5	#32	#539	1802	1802	2-28-56	6-20-55
10+0	98.2	93.50	4.7	9+90.0	10+28.5	10+31.5	#7382	#5290	1809	1808	2-13-56	6-20-55
					10+88.0	10+91.0	17146	45714	1815	1814	5-21-63	7-15-74
11+0	98.2	93.90	4.3		11+49.0	11+51.0	17145	17268	1821	1820	5-21-63	6-12-63
12+0	98.2	94.30	3.9		12+18.5	12+21.5	17767	81250	1827	1826	6-12-63	5-15-64
	98.0	94.50	3.5	12+50.6								

2000-02141-9/28/00-1827W Anita- Padgett Exc- 4" SCH40 - old msmt incorrect - Replaced entire line - 4" wye - ITW INC, 1V22, 1H22
 1999-01505-12/21/99- Ks Ditching- 4" SCH40, Repl all but lower 3' of sewer

#5571-Exp-1626 Anita - 2-13-55
 #1609-Exp-2049 Anita - 8-17-58
 #7458-Exp-1703 Anita - 2-21-56
 3548 Top 1620 Anita - 1-10-57