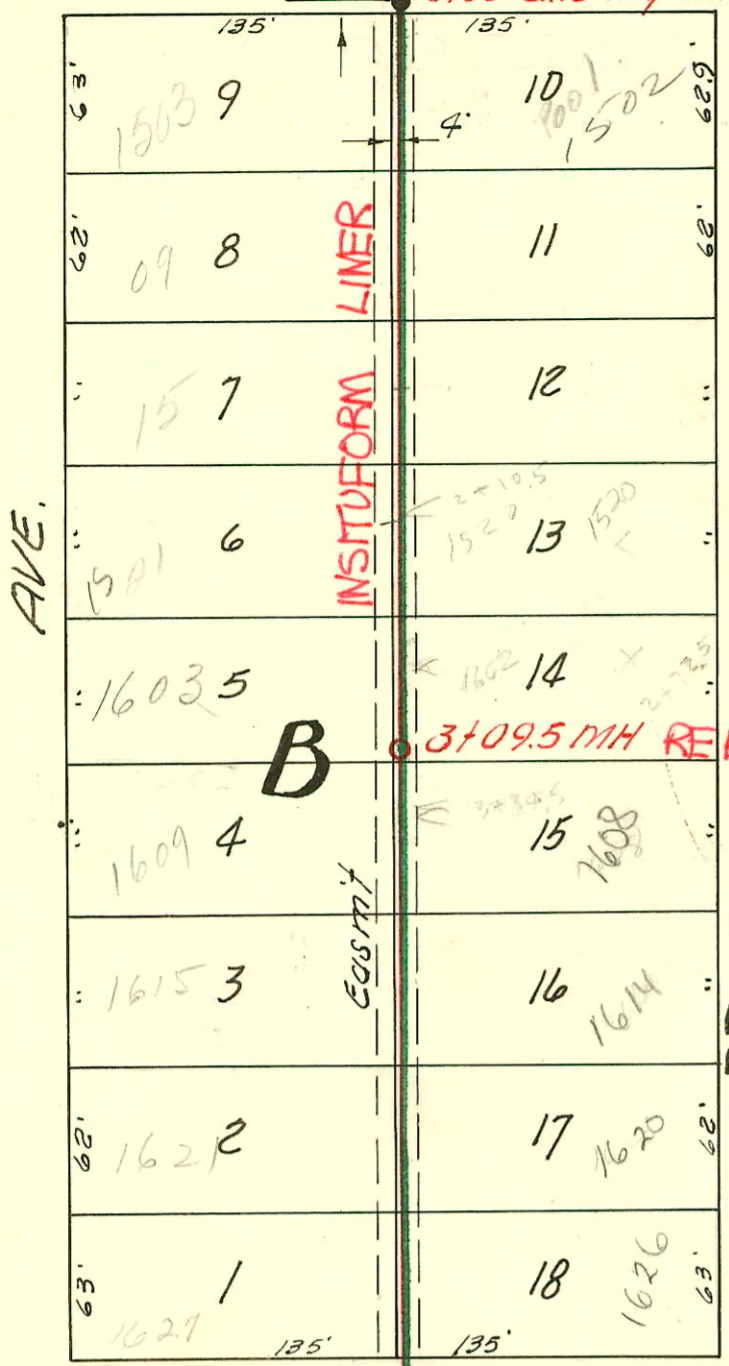
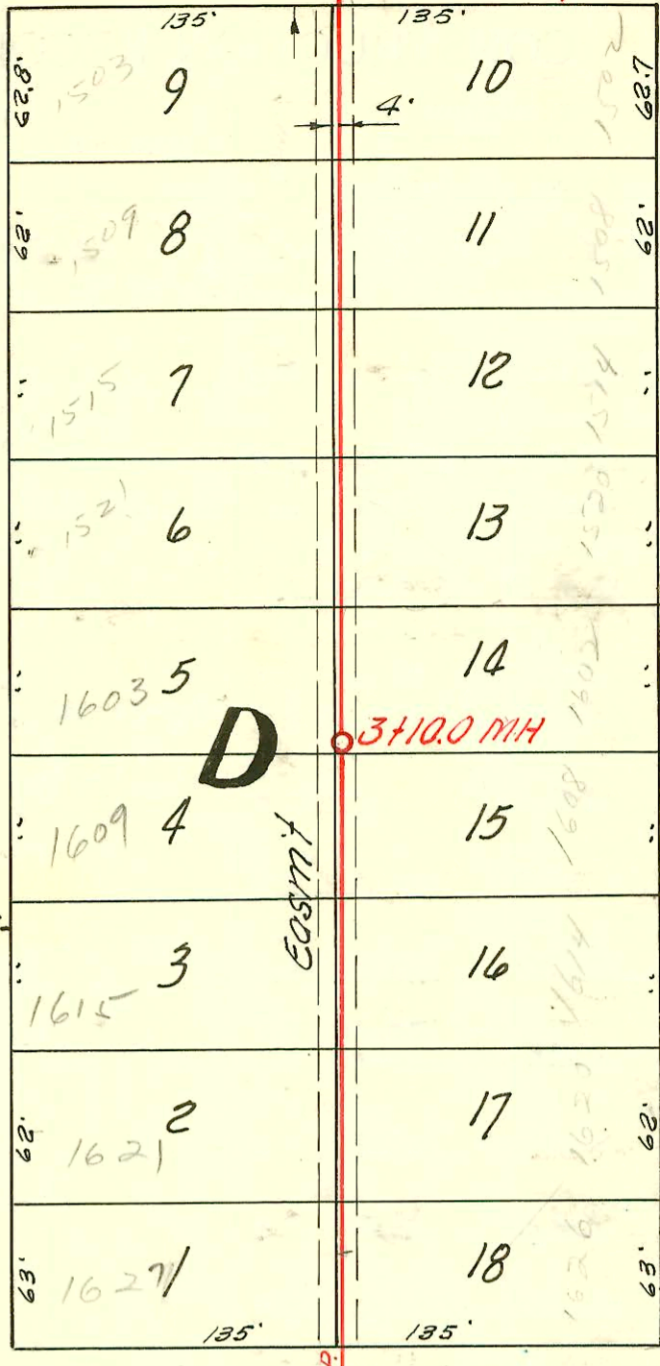


ELIZABETH AVE. 0100 Existing MH

ELIZABETH AVE. 0100 Existing MH

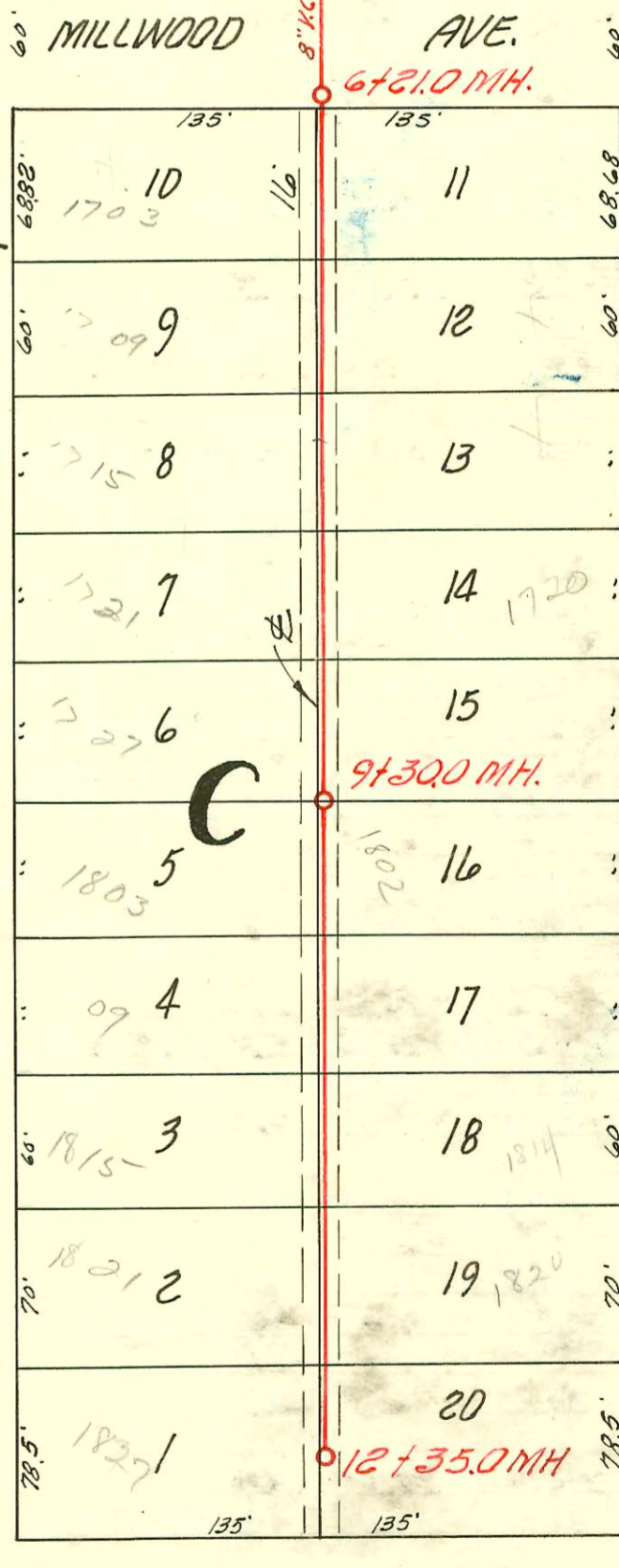
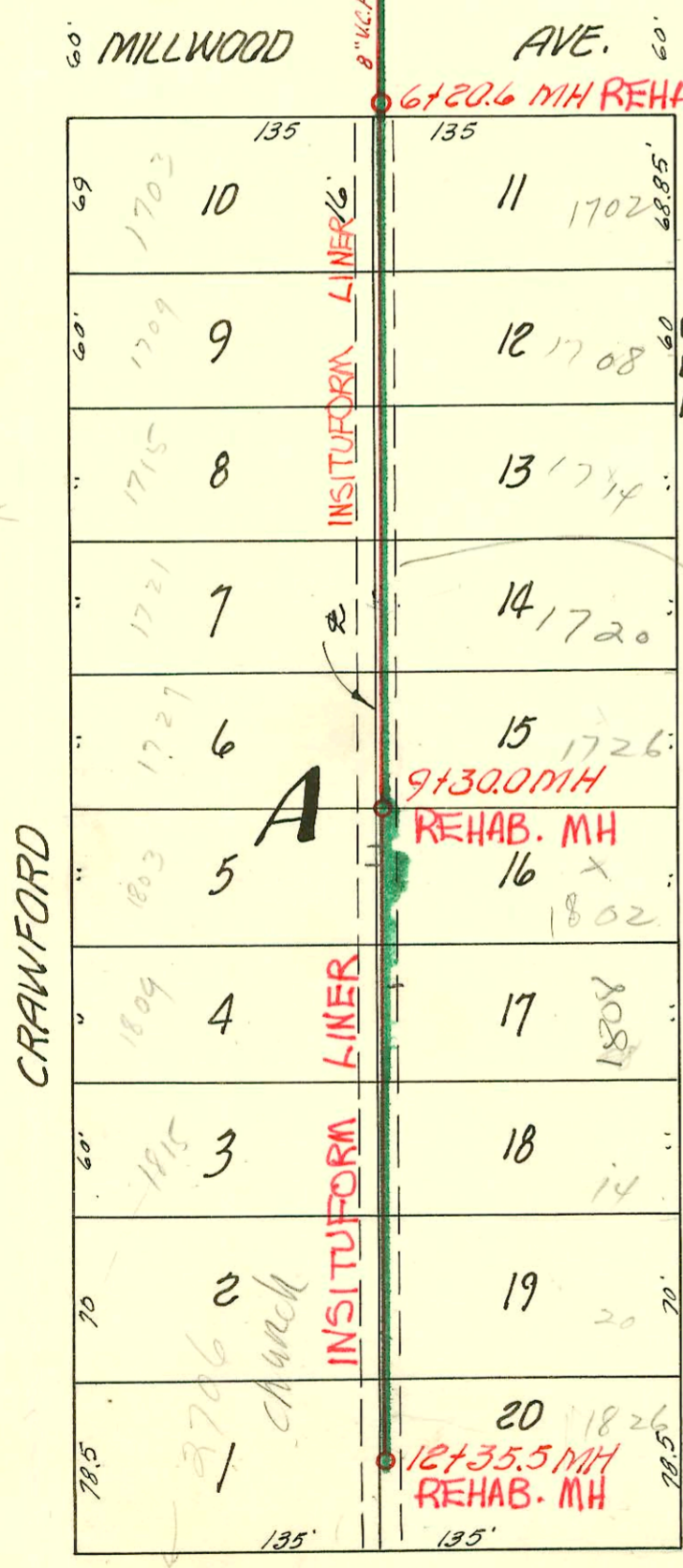


SEWER RESPONSE PLAN-
 PHASE ID
 PROJ. NO. 468-82544
 BUILT BY INSITUFORM
 BOOKED 3-18-96
 FROM AS BUILTS



SEWER REPOSE PLAN-
 PHASE 1A
 PROJ. NO. 468-82420
 BUILT BY INSITUFORM
 BOOKED 10-9-95
 FROM AS BUILTS

See G-250A
 For Reconnections



LAT. 9, SUB. 2, S.S. 22

UTILITY CONT. INC. MAY 18, 1955

BK NO. K-24, P. 40, PROJ. NO. C25-10

LAT. 8, SUB. 2, S.S. 22

UTILITY CONT. INC. MAY 18, 1955

BK. NO. K-24, P. 38, PROJ. NO. C25-9

CONSTRUCTION RECORD

SERVICE RECORD

STATION	ELEVATION		Depth	MANHOLE	4-INCH "Y" BRANCHES		No. of Permit		House Number		DATE OF PERMITS	
	Ground	Grade			North West	South East	North West	South East	North West	South East	North West	South East
0+0	98.6	90.00	8.6	0+00 Existg MH.	0+23.5	0+26.5		205087 4322	1502 Antia			9-11-01
1+0	98.6	90.40	8.2		0+87.0	0+90.0	6242	4323	1501 Antia	1508 Antia	2-13-58	4-12-57
2+0	98.7	90.80	7.9		1+49.0	1+52.0	6243	4324	1515 Antia	1514 Antia	2-13-58	4-12-57
3+0	98.7 98.8	91.20 91.24	7.5 7.6	3+10.0	2+10.5 2+73.0	2+13.5 2+76.0	7639	4325 25328 7117	1580 Antia 1603 Dallas	1580 Antia	8-6-58	4-12-57 3-19-57
4+0	98.5	91.60	6.9		3+35.5 3+98.0	3+38.5	7640 7641	9641 7112	1609 Dallas 1615 Dallas	1609 Antia	8-6-58	11-14-53 3-19-57
5+0	98.4	92.00	6.4		4+60.0	4+63.0	7642	13332 7113	1621 Dallas	1620 Antia	8-6-58	3-26-55 3-19-57
6+0	98.4 98.2	92.40 92.48	6.0 5.7	6+21.0	5+21.5	5+24.5	7643	4321	1627 Dallas	1626 Antia	8-6-58	
7+0	98.3	92.80	5.5		6+44.5	6+47.5	#1200	7476	1703 Dallas	1704 Antia	6-21-56	7-28-56
8+0	98.4	93.20	5.2		7+12.0 7+73.0	7+15.0 7+76.0	#1201 #1202	#1201 #1202	1703 Dallas 1714 Dallas	1703 Antia 1714 Antia	6-21-56 7-18-56	6-21-56 6-21-56
9+0	98.4 98.4	93.60 93.72	4.8 4.7	9+30.0	8+26.0 8+87.5	8+29.0 8+90.5	#505 #5013	#5010 #5014 #5013	1721 Dallas 1721 Dallas	1720 Antia 1720 Antia	6-1-55 7-18-56	6-1-55 6-1-55
10+0	98.6	94.00	4.6		9+47.5	9+50.5	2819	#5012	1800 Dallas	1802 Antia	10-19-56	6-30-53 6-1-55
11+0	98.4	94.40	4.0		10+07.5 10+72.5	10+10.5 10+75.5	2820	#5011	1809 Dallas	1808 Antia	10-19-56	6-1-55
12+0	98.3	94.80	3.5		11+32.5	11+35.5	B981	#16567	1815 Dallas	1814 Antia	4-18-63	11-63
	98.5	94.94	3.6	12+35.0	12+03.0	12+06.0	B982	B1206	1821 Dallas	1820 Antia	3-4-64	11-63
									1827 Dallas	1826 Antia	3-4-64	5-6-64
0+0	98.2	90.50	7.7	0+00 Existg MH	0+23.5	0+26.5	6849	#671	1503 Crawford	1502 Antia	5-13-58	5-2-52
1+0	98.8	90.90	7.9		0+84.5	0+87.5	6850		1503 Crawford		5-13-58	
2+0	98.8	91.30	7.5		1+48.0	1+51.0	6851	#672	1515 Crawford	1514 Antia	5-13-58	5-2-52
3+0	98.8 98.9	91.70 91.74	7.1 7.2	3+09.5	2+07.5 2+69.5	2+10.5 2+72.5	6852 6853	76208 #152	1501 Crawford 1603 Dallas	1520 Antia 1602 Antia	5-13-58	1-18-80 7-20-54
4+0	98.9	92.10	6.8		3+31.5 3+93.5	3+34.5 3+96.5	7116 7331	#11267 #3439 #3440	1609 Crawford 1615 Crawford	1608 Dallas	5-29-58	1-8-96 12-31-56
5+0	98.9	92.30	6.6		4+55.5	4+58.5	7332	3441	1621 Crawford	1620 Dallas	6-20-58	12-31-56
6+0	98.9 98.9	92.90 92.98	6.3 5.9	6+20.6	5+17.5	5+20.5	7786	#405	1621 Crawford	1620 Dallas	8-18-58	4-3-56
7+0	98.8	93.30	5.5		6+44.0	6+47.0	8251	#6003	1703 Crawford	1703 Antia	10-13-58	8-15-55
8+0	98.8	93.70	5.1		7+08.0 7+69.0	7+11.0 7+72.0	8252 8253	#7109 #6530	1709 Crawford	1708 Antia	10-13-58	4-9-52 9-20-55
9+0	98.8	94.10	4.7	9+30.0	8+29.0 8+89.0	8+32.0 8+92.0	8254 8255	#13065 #6531 #6532	1714 Crawford 1721 Crawford	1714 Antia 1720 Antia	10-13-58	2-15-85 9-15-53 9-20-55
10+0	98.8	94.50	4.3		9+49.0	9+52.0	8256	#5016	1803 Crawford	1802 Antia	10-13-58	4-7-52 6-1-55
11+0	98.7	94.90	3.8		10+08.5 10+69.0	10+11.5 10+72.0	8257	#8133	1809 Crawford	1808 Antia	10-13-58	6-1-55
12+0	98.7	95.30	3.4		11+29.0 11+99.0	11+32.0	#7379	#8-18	1815 Crawford	1814 Antia	9-12-63	8-13-63
	98.8	95.44	3.4	12+35.5	12+02.0		#8132		1826 Dallas			9-12-63

LAT 8, SUB 2, S. S. # 22

LAT 9, SUB 2, S. S. # 22

#3022 - Tap 1508 Dallas - S. Glenn - 11-12-56
 #641 Tap 1503 Dallas - S. Glenn - 2-13-58 (2+15)
 #B4368 - Tap 2746 S. Glenn - 10-26-65 - Kennedy Aky (11+73.0) Rep 500MHT page

