

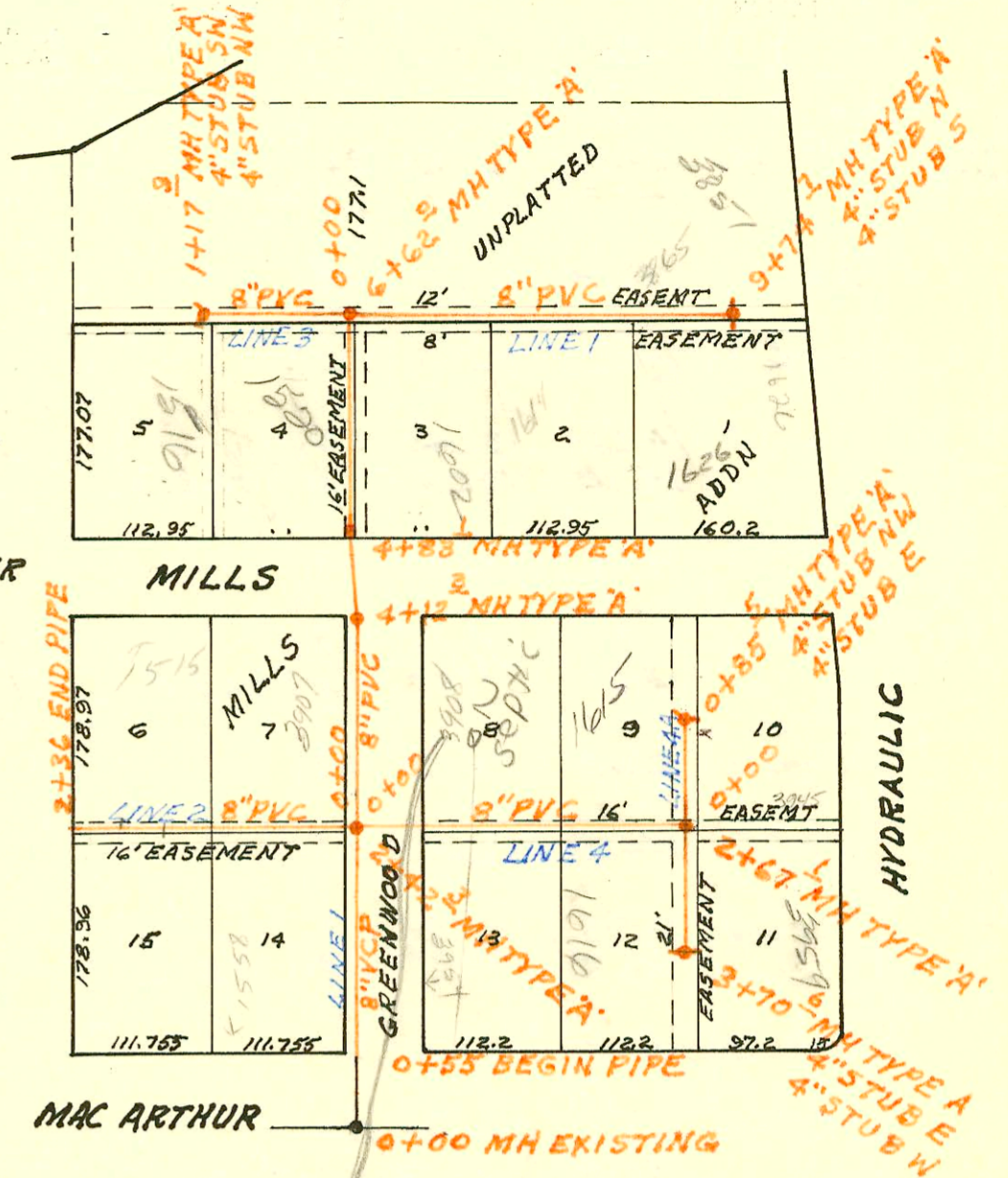
*Check for
access on Dept.*

SCALE 1" = 150'

LATERAL 47 MAIN 1 SOUTHWEST INTERCEPTOR SEWER
BUILT BY: UTILITY CONTR. INC.
PROJ. NO 468-76-245-80506-000-000-001
BOOKED 1-19-81 FROM JLA 12

on map

9-18



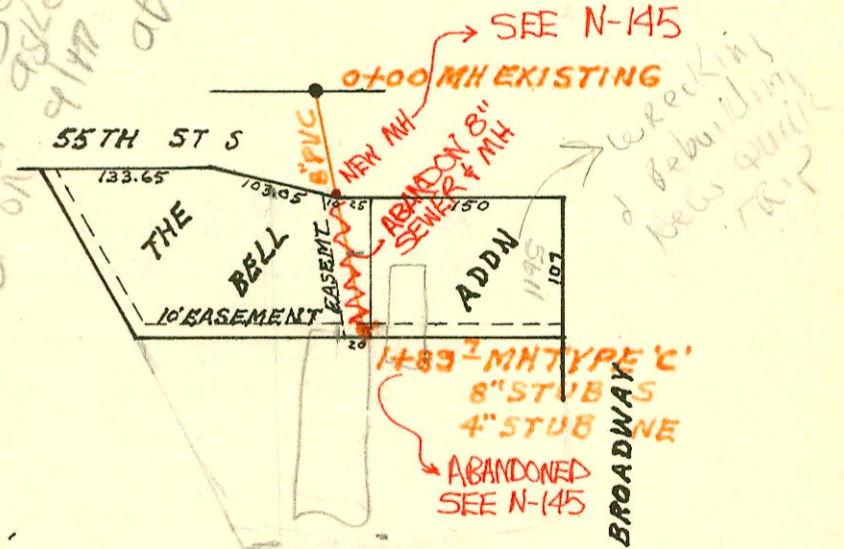
*3908 Greenwood
advised by state
has been by state
S. Garrahan said
Homeowner said
9116 but
Belted on 9/17
asked for
3945
said she can't
afford to connect
8/17/03*

SCALE 1" = 150'

LATERAL 150 SOUTHWEST INTERCEPTOR SEWER
BUILT BY: MID STATES CONST. CO.
PROJ. NO 468-76-245-80922-000-000-001
BOOKED 1-21-81 FROM DCD 180

on map

16-b



CONSTRUCTION RECORD

SERVICE RECORD

STATION	ELEVATION		Depth	MANHOLE	4-INCH "Y" BRANCHES		No. of Permit		House Number		DATE OF PERMITS	
	Ground	Grade			North West	South East	North West	South East	North West	South East	North West	South East
LAT 47 MAIN 1 SWI (CONT'D)												
LINE 1 CONT'D 6+00	87.4	78.15	9.3									
	87.8	OUT 78.40 IN 78.50	9.4	6+62.0								
7+00	87.9	78.65	9.3									
8+00	87.1	79.05	8.1		8+21.13		3973		1614 mills			3-30-81
9+00	87.1	79.45	7.7		9+62.74		13143		3865 - Church 3857 - Hydraulic			3-4-85
	86.8	79.75	7.1	9+74.7	4" STUB N	4" STUB S	#23003		1626 mills			4-3-81
LINE 2												
0+00	86.9	76.63	10.3	0+00 = 2+42.3 LINE 1								
1+00	87.0	77.03	10.0		0+77 TAP		1382		1558 E Mills			5-2-85
2+00	87.6	77.43	10.2		74' W of SR 1+90.0 TAP		20316		1935 E Mills			3-22-88
2+36	87.8	77.57	10.2	END PIPE								
LINE 3												
0+00	87.8	79.53	8.3	0+00 = 6+62 LINE 1								
1+00	88.0	79.93	8.1									
	88.2	80.00	8.2	1+17.9	4" STUB NW	4" STUB SW	2064		1516 mills			12-10-80
LINE 4												
0+00	86.9	77.94	9.0	0+00 = 2+42.3 LINE 1								
1+00	86.6	78.34	8.3		0+78 TAP		561		3907 Greenwood			4-14-87
2+00	86.5	78.74	7.8				2353		3954 S Greenwood			1-2-81
	86.3	79.01	7.3	2+67.1								
3+00	86.5	79.24	7.3									
	86.5	79.52	7.0	3+70.6	4" STUB W	4" STUB E	2122	2329	1616 E MacArthur	3959 S Hydraulic	12-16-80	1-9-81
LINE 4A												
0+00	86.3	79.08	7.2	0+00 = 2+67.1 LINE 4								
	86.1	79.42	6.7	0+85.5	4" STUB NW	4" STUB E	#2564		1615 mills			2-6-81
LATERAL 150 SOUTHWEST INTERCEPTOR SEWER												
0+00	83.1	70.53	12.6	EXISTING								
1+00	82.2	70.93	11.3		0+79.0							
	82.5	71.29	11.2	1+89.7	4" STUB NE	8" STUB S	1247		5611 S. Broadway			9-25-80
LATERAL 33 MAIN 4 SOUTHWEST INTERCEPTOR SEWER												
LINE 1 0+00	143.7	135.45	8.3	0+00								
	143.6	OUT 135.70 IN 135.80	7.8	0+82.0			0187.0	18627	149 S. Glencrofts			7-1-87
1+00	143.3	135.85	7.5									
2+00	144.1	136.15	8.0				2+26.0 TAP	11322	143 S. Glencrofts			6-29-84
3+00	144.2	136.45	7.8									
	144.4	136.51	7.9	3+20.0	4" STUB W	4" STUB N	3453	21831	145 S. Munrofield	139 S. Munrofield	6-8-81	11/23/88
LINE 2												
0+00	140.2	130.26	9.9	Begin Pipe	0+26.2		2066		310 S. Glencrofts			12-10-80
1+00	140.3	130.56	9.7									
	140.6	OUT 130.69 IN 130.74	9.9	1+25.0								
2+00	140.6	130.95	9.7		1+88.0 TAP		8497		7729 Harmony			6-23-83
					2+14.0 TAP		13359		7721 Harmony			3-29-85
3+00	140.3	131.23	9.1		3+25.7 TAP		9496		7711 W Harmony			10-24-83
					3+82.1 TAP		7859		7703 Harmony			4-15-83

CONT'D NEXT PAGE

95 S. Broadway - Dondlinger - old Quirk Rd - 8" city main

95 S9007 4-26-95 5611 S. Broadway - Dondlinger - old Quirk Rd - 8" city main

S10 at New Mt