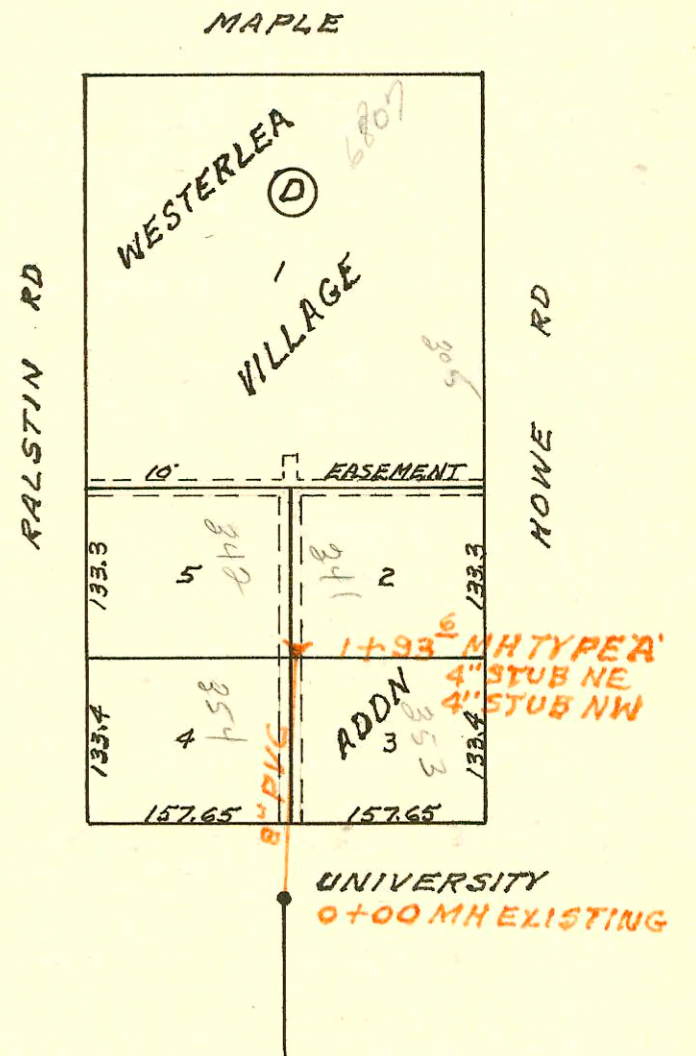


LATERAL 154 SOUTHWEST INTERCEPTOR
 BUILT BY: MID STATES CONST. CO.
 PROJ. No 468-76-245-80961-000-000-001
 BOOKED 5-4-81 FROM LES 23

on map

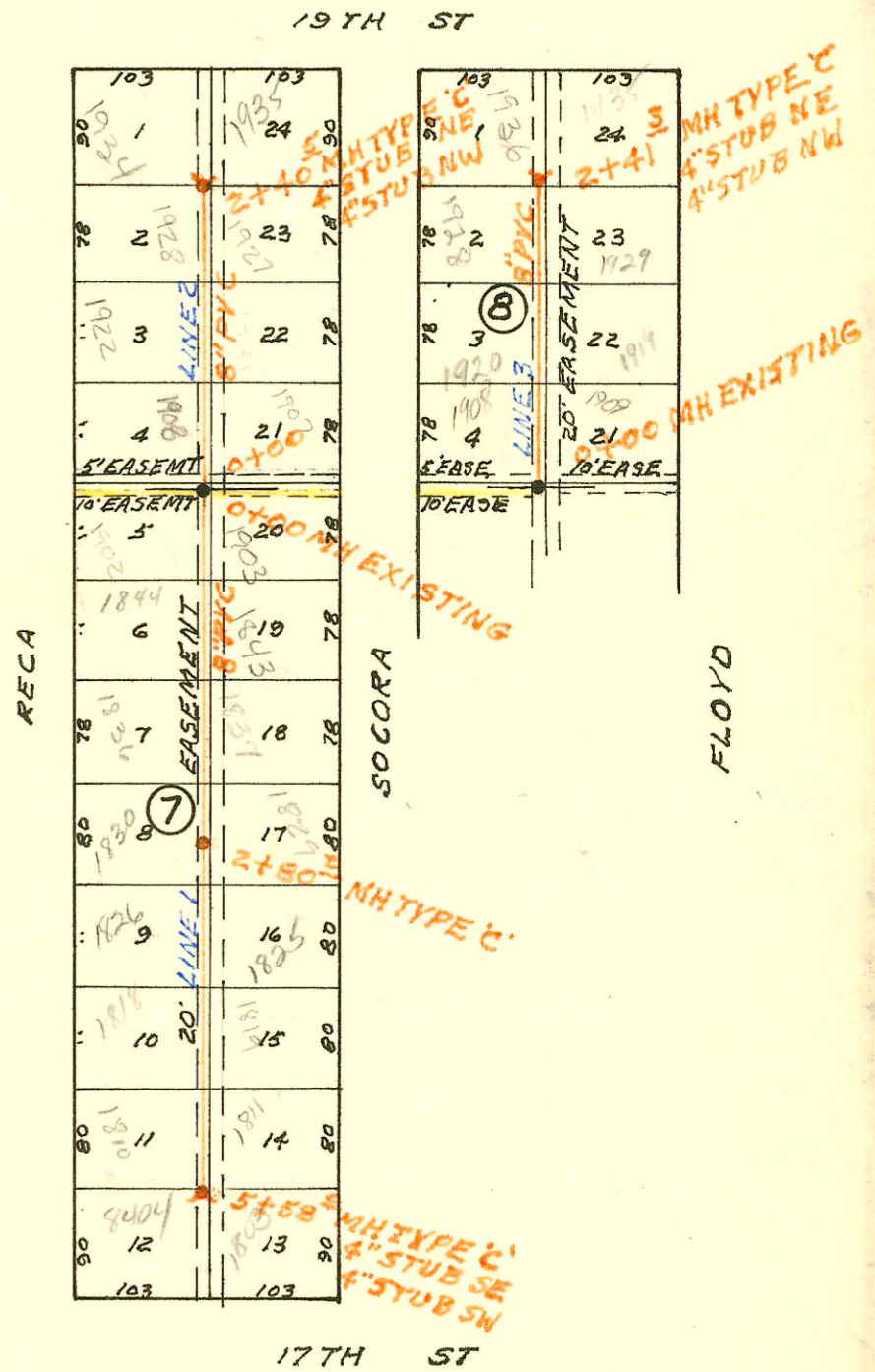
SCALE 1" = 150'



SCALE 1" = 150'

LATERAL 132 SOUTHWEST INTERCEPTOR
 BUILT BY: CLEARWATER EXCAVATION CO.
 PROJ. No 468-76-245-80602-000-000-001
 BOOKED 5-9-81 FROM TCD 36

on map



CONSTRUCTION RECORD

SERVICE RECORD

STATION	ELEVATION		Depth	MANHOLE	4-INCH "Y" BRANCHES		No. of Permit		House Number		DATE OF PERMITS	
	Ground	Grade			North West	South East	North West	South East	North West	South East	North West	South East
LAT 14 MAIN 20 WIS (CONT'D)												
LINE 2 0+00	194.9	183.64	11.3	0+00	0+70.0 tag		5045		1710 N Kearney Ln 1718			1-7-82
1+00	194.5	184.04	10.5		0+85.0 tag	1+15.0 tag	7398	15888	Lawrence 1718 Lawrence 1726	7009 St Fairmount		1-20-83 3-19-86
2+00	194.7	184.44	10.3		1+11.0 tag	2+07.2 tag	16587	8801	Lawrence	7005 Fairmount 6721		7-10-86 7-26-83
3+00	195.2	184.67	10.5	2+58.7	4" STUB NE 4" STUB NW	4" STUB NE	10307	7701	1734 Lawrence	6721 Fairmount		2-28-84 3-18-83
LINE 3												
0+00	201.7	191.41	10.3	0+00		0+13.6 tag		3538		1709 N Gouverneur		6-22-81
1+00	200.7	191.81	8.9			1+30.5 tag		5099		1717 N Gouverneur		1-22-82
2+00	200.5	192.21	8.3		1+88.1 tag	2+15.1 tag	5526		7021 Fairmount		4-1-82	
	200.3	192.42	7.9	2+53.1	4" STUB NE 4" STUB NW	4" STUB NE	7397	7173	6635 7027 Fairmount	1725 N Gouverneur 1733		9-27-82 12-15-82
LATERAL 154 SOUTHWEST INTERCEPTOR SEWER												
0+00	127.0	120.00	7.0	0+00	EXISTING							
1+00	128.5	120.40	8.1		1+24.0 tag	1+28.8 tag	2403	4263	354 Palaton	353 Howe		1-16-81
	128.3	120.77	7.5	1+93.6	4" STUB NW 4" STUB NE	4" STUB NE	6422	2363	342 Kearney	341 Howe		8-25-82 1-13-81
LATERAL 132 SOUTHWEST INTERCEPTOR SEWER												
LINE 1 0+00	163.59	154.13	9.5	0+00	EXISTING	0+58.0 tag	9427	9875	1902 Kearney	1903 N Kearney		10-13-83
1+00	164.2	154.53	9.7		0+82.0 tag	1+07.0 tag	8485	11867	1844 N Kearney	1843 Kearney		6-22-83 8-27-84
2+00	164.7	154.93	9.8		2+06.5 tag	2+14.7 tag	6144	10423	1836 Kearney	1837 N Kearney		7-13-82 3-8-84
	165.2	155.25	10.0	2+80.2	2+89.5 tag	2+72.7 tag	8517	10422	1830 Kearney	1829 N Kearney		6-24-83 7-8-84
3+00	165.2	155.33	9.9		3+44.6 tag		6178		1826 Kearney			7-16-82
4+00	165.2	155.73	9.5		4+28.0 tag	4+18.0 tag	8867	9188	10346 1818 N. Recp	1825 Kearney 1819		2-29-84 8-1-83 9-14-83
5+00	165.5	156.13	9.4		5+17.5 tag	5+22.0 tag	6145	11273	1810 Kearney	1811 Kearney		7-13-82 6-25-84
	166.0	156.36	9.6	5+58.0	4" STUB SW 4" STUB SW	4" STUB SE 4" STUB SW	8200	8317	8404 N 17th	1803 N. Socora		5-18-83 6-9-82
LINE 2												
0+00	163.59	154.18	9.4	0+00	EXISTING	0+27.0 tag	3392	9266	1908 Kearney	1907 Kearney		6-1-81
1+00	163.0	154.48	8.5		1+20.0 tag	0+94.9 tag	3478	11348	1922 Kearney	1921 Kearney		7-2-84
2+00	163.0	154.78	8.2		1+92.1 tag	2+07.7 tag	7006	9201	1928 N Kearney	1927 Kearney		6-11-81
	163.0	154.90	8.1	2+40.5	4" STUB NE 4" STUB NW	4" STUB NE	7007	9408	1934 N Kearney	1935 Kearney		11-17-82 9-16-83 10-12-83
LINE 3												
0+00	161.42	153.27	8.2	0+00	EXISTING	0+17.0 tag	13882	15517	1908 Kearney	1909 Kearney		5-29-85
1+00	161.7	153.67	8.0		0+94.0 tag	35' N of S. R.L.	12245	13362	1920 Kearney	1919 N Kearney		1-27-86 10-15-84
2+00	162.5	154.07	8.4		1+66.3 tag		11558	13781	1928 Kearney	1927 N Kearney		3-27-85 5-17-85
	162.5	154.24	8.3	2+41.3	4" STUB NW 4" STUB NE	4" STUB NE	11232	13721	1936 Kearney	1935 Kearney		7-13-84 6-20-84 6-3-85
LATERAL 126 A SAN SEWER No 22												
LINE 1 0+00	113.4	100.51	12.9	0+00	EXISTING							
0+19	113.0	100.55	12.5		Begin Pipe							
1+00	112.6	100.71	11.9									
	112.3	100.83	11.5	1+60.0		4" STUB E		2792		4731 W Harr		3-10-81
2+00	112.7	100.99	11.7			2+43.1		43912		1625 S. Baehr		8-14-81
3+00	112.5	101.39	11.1									
4+00	112.7	101.79	10.9									
5+00	112.8	102.19	10.6					99927		1637 S. Baehr		5-12-99

CONT'D NEXT PAGE