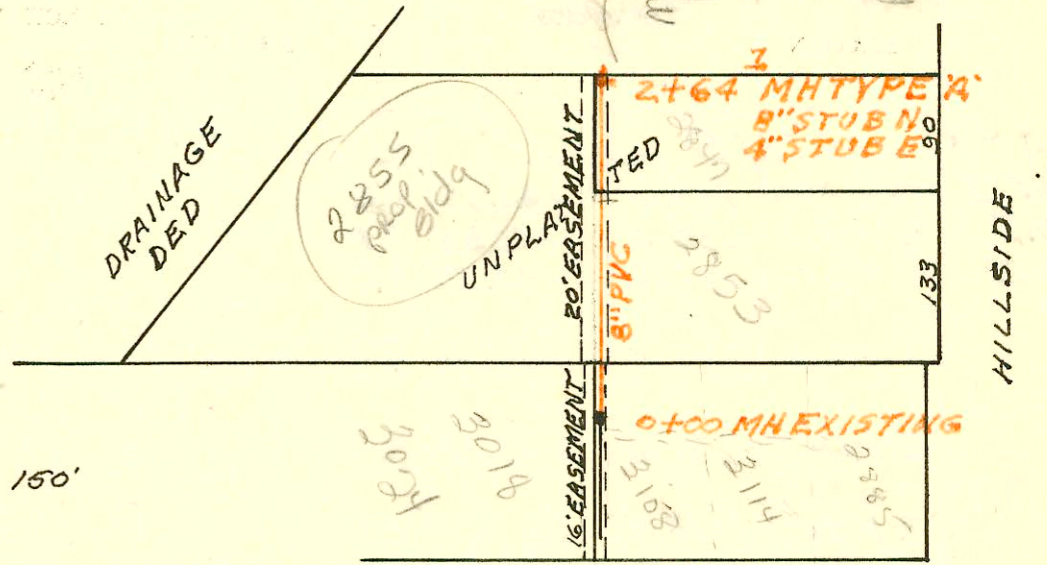


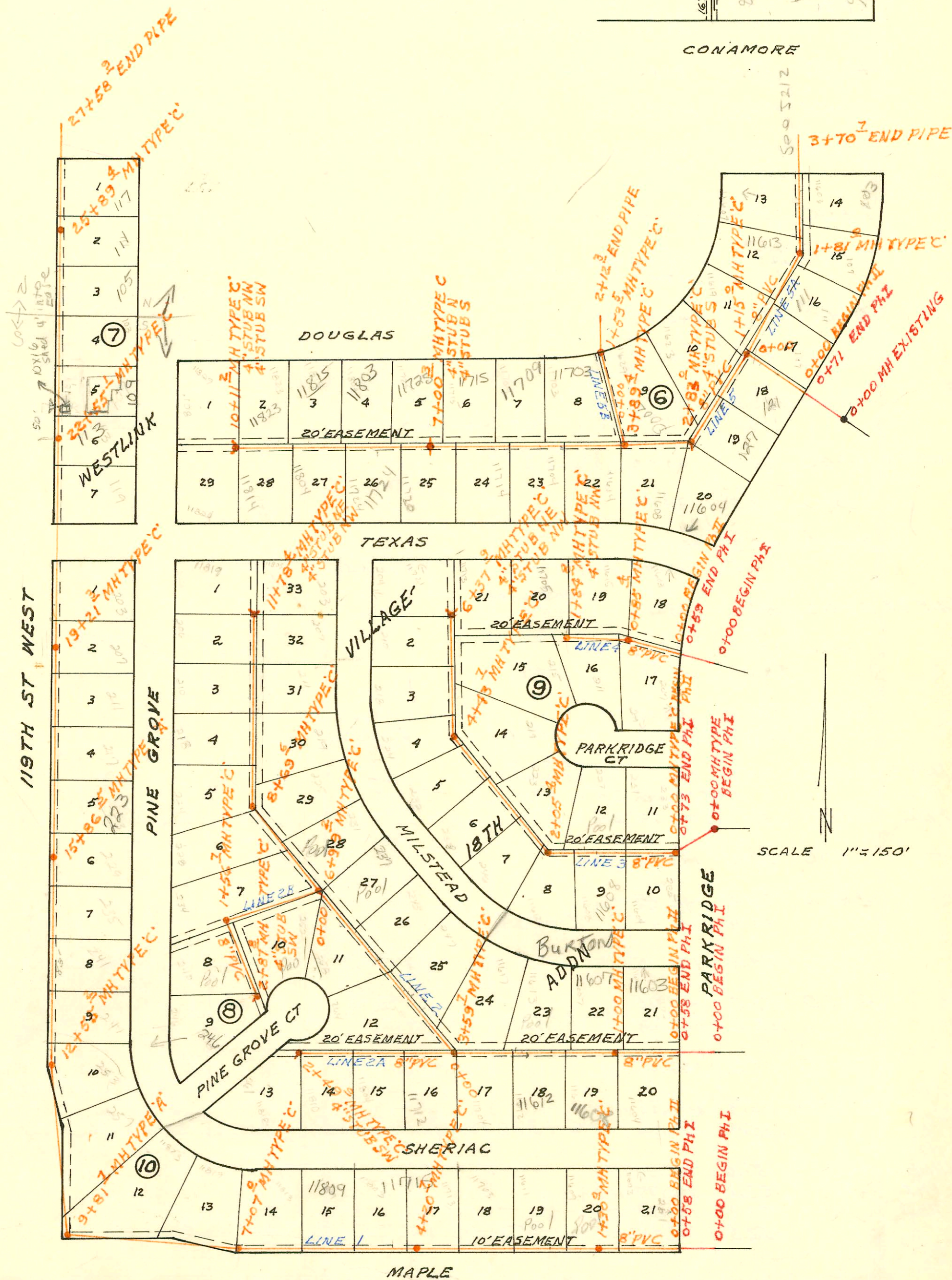
LATERAL 63 WAR INDUSTRIES SEWER
 BUILT BY: WB CARTER CONST. CO.
 PROJ. N^o 468-76-245-80866-000-000-001
 BOOKED 5-16-81 FROM TCD 36
 (SEE G291 FOR DATA)

on map

G291A



SCALE 1"=150'



SCALE 1"=150'

LATERAL 3 MAIN 9 SOUTHWEST INTERCEPTOR
 BUILT BY: DULING CONST. CO (PHASE II)
 PROJ. N^o 468-76-245-80641-000-000-001
 BOOKED 5-21-81 FROM LES 16
 (PHASE I) BUILT BY: MID STATES CONST. CO.

on map

CONSTRUCTION RECORD

SERVICE RECORD

STATION	ELEVATION		Depth	MANHOLE	4-INCH "Y" BRANCHES		No. of Permit		House Number		DATE OF PERMITS	
	Ground	Grade			North West	South East	North West	South East	North West	South East	North West	South East
LATERAL 3 MAIN 9 SOUTHWEST INTERCEPTOR SEWER												
LINE I 0+00	147.0	136.43	10.6									
PH I 0+58	147.4	136.49	10.9									
PH II 0+00	147.4	136.49	10.9									
1+00	146.7	136.89	9.8		0+78.3		4946		11603			12-18-81
		out 137.01 147.2 in 137.18	10.2 10.0	1+30.0	1+22.5		4950		11609			12-18-81
2+00	147.9	137.39	10.5		2+10.8 top 2+92.1 top		4395 6329		11611 Sherman 11703 Sherman			10-23-81 8-11-82
3+00	148.4	137.69	10.7									
4+00	148.0	137.99	10.0		4" sch 40 tap 18' w of EPL		932978		11715 w. Sherman			2993
	147.9	138.05	9.9	4+20.7								
5+00	147.7	138.29	9.4		4" PVC 40 44' E. of WPL		9243223		11809 Sherman			11-20-82
6+00	147.2	138.59	8.6		6+39.0		8460		11813 w. Sherman			6-21-83
7+00	146.3	138.89	7.4									
	146.2	138.91	7.3	7+07.0	7+48.7		9113		11819 Sherman			11-21-83
8+00	147.5	139.19	8.3		8+85.7		9303		11823 Sherman			9-27-83
9+00	146.5	139.49	7.0									
	145.0	out 139.74 in 139.84	5.3 5.2	9+81.7								
10+00	145.0	139.89	5.1									
11+00	146.2	140.19	6.0			11703	9302		257 Pine Grove			9-27-83
12+00	145.6	140.49	5.1									
	145.2	140.65	4.6	12+55.2	12+29.6 top 12+94.7 top		14301 11115		253 Pine Grove 247 S. Pine Grove			7-19-85 6-6-84
13+00	145.2	140.79	4.4									
14+00	145.2	141.09	4.1		67' 50" w. N. property line		11099		241 S. Pine Grove			9-14-85
15+00	145.9	141.39	4.5									
	147.3	141.65	5.7	15+86.5	15+30.5 top		12687		235 S. Pine Grove			12-3-84
16+00	147.4	141.70	5.7									
					11' S of 17.727 16+40.5 top		13334 15340		229 Pine Grove 223 Pine Grove			4-5-85 1-2-86
17+00	149.6	142.10	7.5		17+46.3 top		14049		217 Pine Grove			6-21-85
18+00	152.0	142.50	9.5		18+31.7 top		14015		211 S. Pine Grove			6-17-85
19+00	153.3	142.90	10.4		19+04.3 top		16290		207 Pine Grove			5-30-86
	153.7	142.99	10.7	19+21.3	19+87.3 top		17069		203 Pine Grove			10-8-86
20+00	154.7	143.30	11.4									
21+00	155.5	143.70	11.8		21+87.6 top		17848		119 S. Pine Grove			2-24-87
22+00	156.2	144.10	12.1									
	156.6	144.32	12.3	22+55.1	22+05.7 top		19098		113 S. Pine Grove			9-18-87
23+00	156.5	144.50	12.0		(15' W of SPL) 23+05.1 top 23+98.4 top		25164 23596		109 S. Pine Grove 103 S. Pine Grove			4-18-90 7-25-89
24+00	156.6	144.90	11.7									
					4" PVC 40 25+23.8 MC		9515077		105 N Pine Grove			10-3-85
25+00	157.0	145.30	11.7									
	157.4	145.66	11.7	25+89.4	25+80.4 top		17846		111 N Pine Grove			2-24-87
26+00	157.5	145.70	11.8		26+89.4 top		17847		117 N Pine Grove			2-24-87
27+00	157.7	146.10	11.6									
27+58.9	158.0	146.34	11.7									

CONT'D NEXT PAGE

* 109 S. Pine Grove - Refer to Bldg Permit #96-19717-101 dtd 11/25/82
12x16 storage shed built on concrete blocks 4' into
util raise. Had Maximos agree with sewer Dept. Also shed
placed over own Bldg line. Unable to locate permit to
verify type of material. Advise homeowner he leaves out
line at own risk 12-19-86 BR