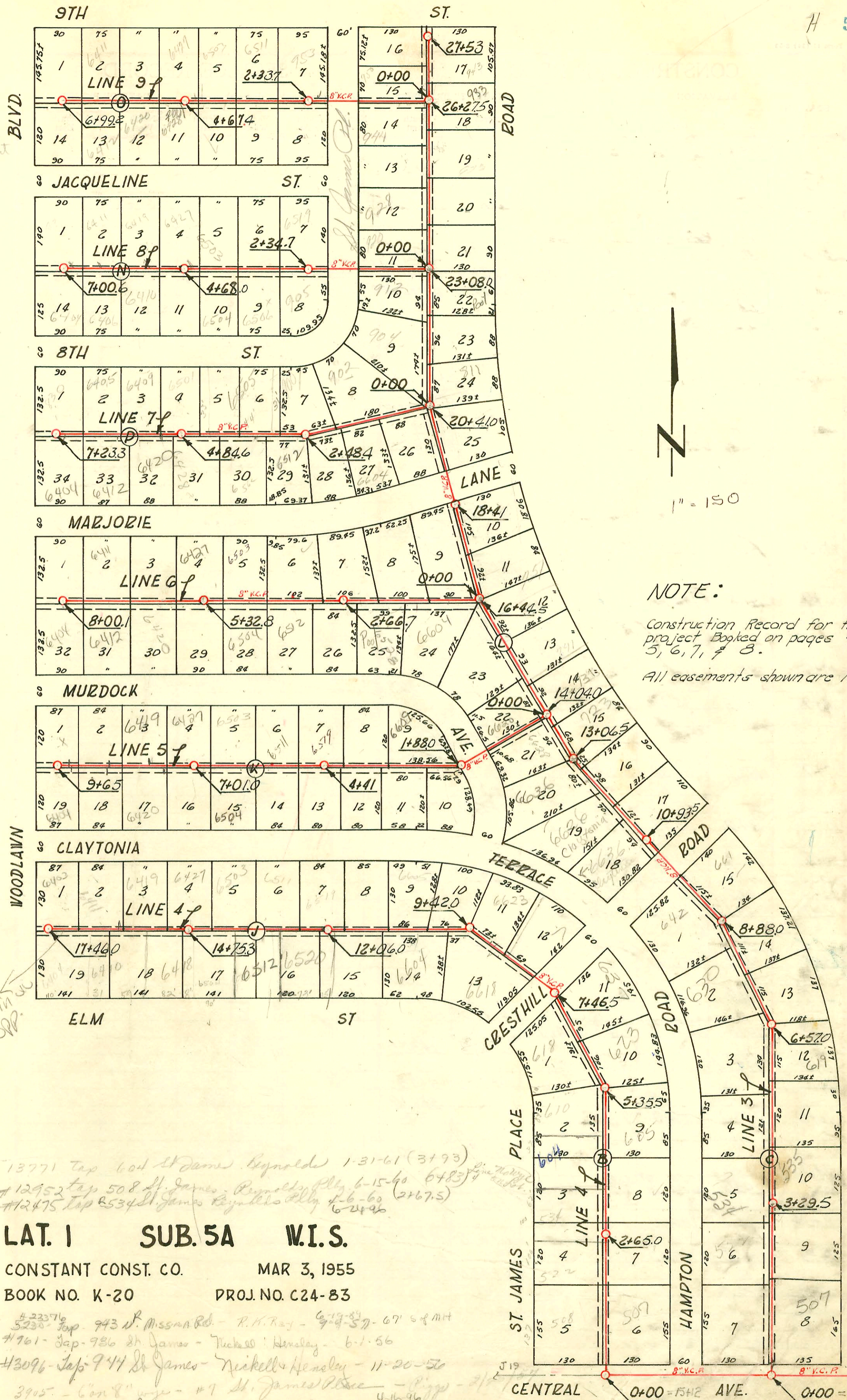


16 ft. easement



NOTE:

Construction Record for this project Booked on pages 4, 5, 6, 7, & 8.
 All easements shown are 16 wide.

13771 Top 604 St James Reynolds 1-31-61 (3193)
 R - 12952 Top 508 St James Reynolds Pk 6-15-60 (6483)
 9697147-#12475 Top 8534 St James Reynolds Pk 6-6-60 (2167.5)
 6-24-60

LAT. 1 SUB. 5A W.I.S.

CONSTANT CONST. CO. MAR 3, 1955
 BOOK NO. K-20 PROJ. NO. C24-83

- #23376 5230 Top 943 St. Mission Rd. - R.H. Ray - 9-29-57 - 67' 6" MH
- #761 - Top 986 St James - Richard Hensley - 6-1-56
- #3096 - Top 944 St James - Richard Hensley - 11-20-56
- 3905 - Con 8" pipe - #7 St. James Place - Pipp - 2/11/57
- 965237-#4378-933 Mission - Top Artie Ray - 5-8-57 - TOP 26+12.9 (4 1/2" dia MH 26-27.5) 41" PC 4'
- #4447 - Top 507 Hampton - Dennis - 10-23-57
- 7304 Top 912 St James Place - Richard Hensley - 6-16-58
- 8129 Top 6505 E 8th Hensley 11-20-58 31+5.94
- By 113863 Top 610 St James Reynolds 8-27-59 4+6.3 (Hemming)
- 11268 Top 618 St James Reynolds 9-25-59 6+32.5 - R.H. Ray

CONSTRUCTION RECORD

SERVICE RECORD

STATION	ELEVATION		Depth	MANHOLE	4-INCH "Y" BRANCHES		No. of Permit		House Number		DATE OF PERMITS			
	Ground	Grade			North West	South East	North West	South East	North West	South East	North West	South East	North West	South East
	185.4	176.65 Out 176.85 In	8.8 8.6	5+35.5										
6+0	185.6	177.10	8.5		5+83.7 6+12.5	5+86.7		20001367 #3751		623 f 618 f		6-6-58 3-18-55		
7+0	185.9	177.50 177.68 Out 177.88 In	8.4 8.6 8.4	7+46.5	6+84.0	6+81.0		#5473				8-27-59		
8+0	186.6	178.10	8.5		NORTH 8+26.5 8+77.0	SOUTH 8+29.5 8+90.0		#216 #2263 #3755	123549 10767	6618 E elm		6-21-55 3-28-59 7-1-59		
9+0	187.5	178.50 178.67 Out 182.00 In	9.0 9.1 9.3	9+42.0	9+65.7			#3922		6615 Claytonia		3-24-55		
10+0	188.3	180.23	8.1			10+17.0 10+65.0 10+62.0 10+95.0				6604 E. Elm		10-27-61		
11+0	189.4	180.63	8.8		11+40.0	11+22.5		#6630	#16467	6527 Claytonia		10-10-55		
12+0	190.2	181.03 181.07 Out 182.00 In	9.2 9.3	12+06.0	12+24.0	12+59.5				6520 E. Elm		1-28-60		
13+0	190.9	182.36	8.5		13+05.0	13+98.0 TAP 13+50			#15126	6504 E. Elm 6512 ELM		1-30-62 12-8-60		
14+0	191.3	182.76	8.5		14+03.0 14+54.0			#5564		6427 Claytonia		11-5-57		
15+0	191.9	183.08 Out 184.00 In	8.8 7.9	14+75.3	15+39.8	15+36.8		217848 4072		6419 Claytonia		10-27-58 4-7-55		
16+0	192.9	184.48	8.4		16+12.0 16+43.0	16+74.5		#4091		6411 Claytonia		4-7-55		
17+0	193.7	184.88	8.8		17+05.0 17+37.0	17+34.0		#19327 7461		6403 R Claytonia		11-21-55 2-23-56		
	194.0	185.08	8.9	17+46.0										
0+0	190.8	181.50	9.3	0+00 = 14+04 in Line #3										
1+0	190.6	181.90	8.7		NORTH	SOUTH								
2+0	189.0	182.24 Out 182.44 In	8.8 8.6	1+88.0	2+27.0	2+82.0		#4137		6612 R Claytonia		4-8-55		
3+0	190.2	182.90	7.3		2+79.0	2+82.0		#4888	#4570	6607 R Munich 6604 Claytonia		5-23-55 5-3-55		
4+0	191.9	183.30	8.6		3+75.0			#2855		6529 Claytonia		5-17-55		
	191.8	183.46 Out 184.46 In	8.3 7.3	4+41.0	4+12.5	4+52.5		#3950		6221 R Munich		3-21-55		
5+0	192.1	184.70	7.4		4+49.5	4+52.5		6887 #3749		6517 R Munich 6500 R Claytonia		11-18-54 3-21-55 4-11-55		
6+0	193.0	185.10	7.9		5+42.5	5+45.5 5+97.0		24980 #145	174549 2000-01648 3976	6511 R Munich 6504 R Claytonia		8-28-57 3-21-56 3-12-56 7-17-55 3-24-55		
7+0	193.7	185.50 Out 186.50 In	8.2 7.2	7+01.0	6+27.5	6+90.5		#6810 #3754	#3944	6503 R Munich 6427 R Munich 6428 Claytonia		10-27-55 8-5-57 3-16-55 3-21-55		
8+0	194.4	186.90	7.5		7+86.0	7+83.0		1179 #3759	4" PVC Sch 40 #3759	6419 R Munich 6420 R Claytonia		12-3-51 3-18-55 3-24-55		
9+0	195.0	187.30	7.7		8+67.0	8+70.0		#3758	#2319	6411 R Munich 6412 R Claytonia		3-18-55 3-24-55 6-9-55		
	195.5	187.56	7.9	9+65.0	9+45.0	9+42.0		#5761	966247 5782	6401 R Munich 6404 R Claytonia		6-9-55 5-8-56 6-9-55		

LINE # 4
CONTINUED

LINE # 5

#4899 = 637 + 643 tap - 12-10-81 - at Manning 7146.5 SE

#47 - tap - 6403 Claytonia - Kelly Pllg - 2-29-54
 4638 ✓ 6519 ✓ Building - 6-17-57
 8997 Tap 6404 E Elm Reynolds 2-27-59 (16+91)
 8998 Tap 6410 E Elm Reynolds 2-27-59 (16+25)
 10265 tap 6418 E Elm Reynolds 5-13-59 (15+32)
 13574 tap 6512 E Elm Reynolds 12-8-60 (13+50)
 15126 tap 6504 E Elm Reynolds 1-30-62 (14+31.3)

