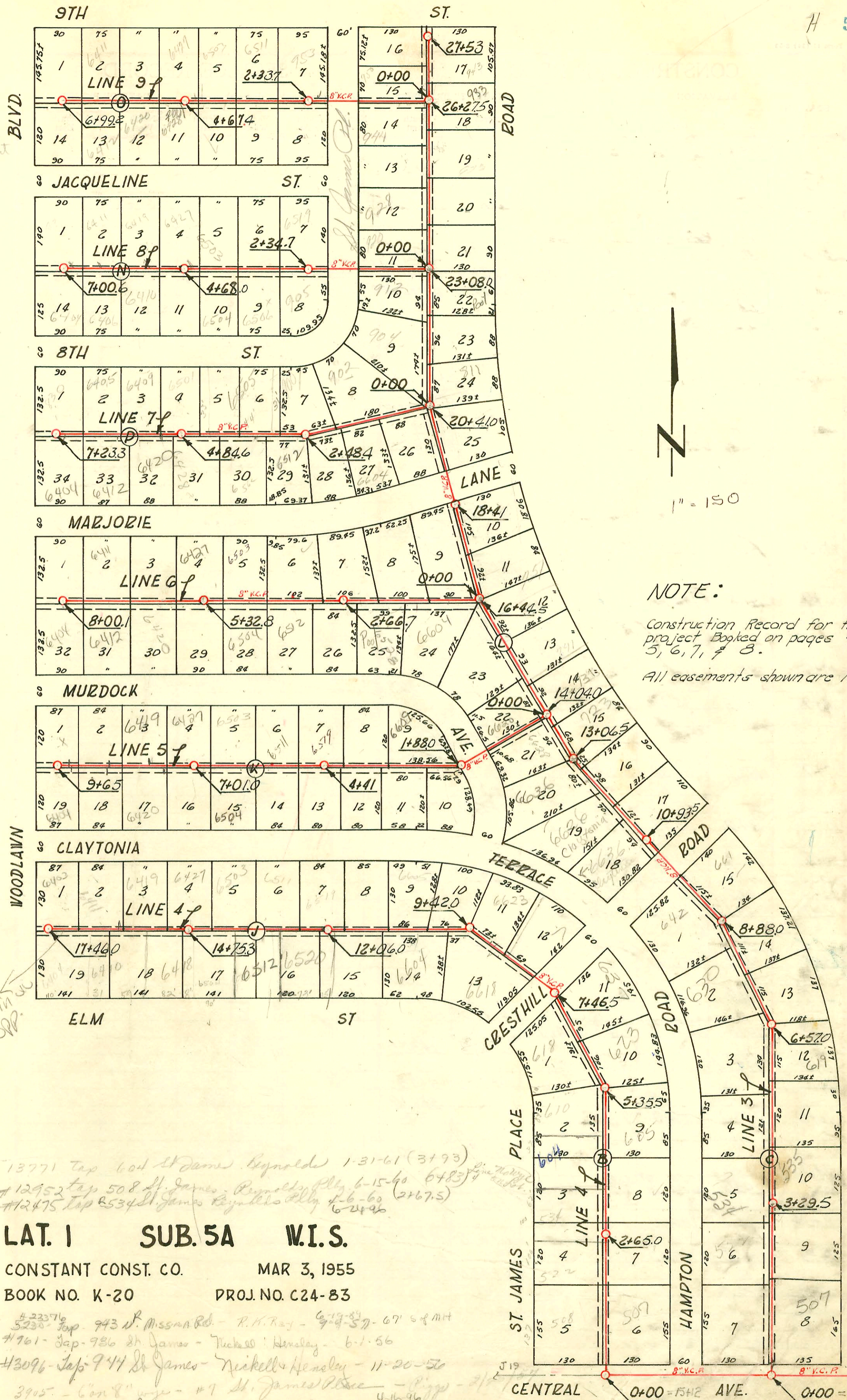


16 ft. easement



NOTE:
 Construction Record for this project Booked on pages 4, 5, 6, 7, & 8.
 All easements shown are 16 wide.

13771 Top 604 St James Reynolds 1-31-61 (3193)
 R - 12952 Top 508 St James Reynolds Pk 6-15-60 (6483)
 969147 - #12475 Top 8534 St James Reynolds Pk 6-6-60 (2167.5)
LAT. 1 SUB. 5A W.I.S.
CONSTANT CONST. CO. MAR 3, 1955
BOOK NO. K-20 PROJ. NO. C24-83
 #23376 5230 Top 943 St. Mission Rd. - R.H. Ray - 9-29-57 - 67' 6" MH
 #761 - Top 986 St James - Richard Hensley - 6-1-56
 #3096 - Top 944 St James - Richard Hensley - 11-20-56
 3905 - Con 8" pipe - #7 St. James Place - Pipp - 2/1/57
 965237 #4378 - 933 Mission - Top Artie Ray - 5-8-57 - TOP 26+12.9 (4 1/2" dia MH 26-27.5) 4" PC 4"
 #4447 - Top 507 Hampton - Dennis - 10-23-57
 7304 Top 912 St James Place - Richard Hensley 6-16-58
 8129 Top 6505 E 8th Hensley 11-20-58 3+594
 #113863 Top 610 St James Reynolds 8-27-59 4+63 (Hemming)
 11268 Top 618 St James Reynolds 9-25-59 6+32.5 - R.H. Ray Box 200

CONSTRUCTION RECORD

SERVICE RECORD

STATION	ELEVATION		Depth	MANHOLE	4-INCH "Y" BRANCHES		No. of Permit		House Number		DATE OF PERMITS	
	Ground	Grade			North West	South East	North West	South East	North West	South East	North West	South East
LINE #6 0+0	191.7	183.70	8.0	0+00=16+44.5 Exist'g MH. Line 3	0+60.5	0+63.5		97-154097 44049			9-9-55	11-9-55
1+0	191.1	184.10	7.0		1+18.0	1+63.0	#4064	#02127 6796	66003 Maysville		4-6-55	3-26-81 11-21-55
2+0	191.8	184.50	7.3		2+26.0	2+58.0	#4107	4566	6519 Maysville		6-3-55	8-3-55
3+0	192.0	184.70	7.3	2+66.7								
	192.0	184.90	7.1		3+39.8	3+67.0	4" SCH 40 - CO	2001-00683 4569	6511 Maysville		2-29-55	5-3-55
4+0	192.6	185.30	7.3		4+17.8	4+15.3	4" PVC 40	95-71017 #5774	6504 R Maysville		5-15-95	7-27-55
5+0	193.5	185.70	7.8		5+04.7	5+01.7		2002-02201 5558 #5773	6-127 R Maysville	6428 R Maysville	8-14-02	7-14-55
	193.4	185.83	7.6	5+32.8	5+95.5	5+92.5	#4856	#	6419 Maysville		5-17-55	
6+0	193.9	186.10	7.8		7+09.3	7+06.3	4" PVC 40	93-60767	6411 ER Maysville		3-31-93	11-9-01
7+0	194.7	186.50	8.2		7+84.5	7+87.5	6+67-1 TAP	95-13807 #23767	6403 Maysville	6404 R Maysville	10-12-55	3-24-55
8+00	196.4	186.90	9.5	8+00.1								
LINE #7 0+0	193.2	185.45	7.8	0+00=20+41 Exist'g MH Line 3	0+88.7	0+28.6						
1+0	193.0	185.85	7.2		1+38.4	1+09.2	2110	45587	902 B ST 39th St		7-20-88	7-14-55
2+0	193.4	186.25	7.2		2+29.8	2+26.8	#2228	#631	6520 Maysville		10-3-58	7-26-57
	193.7	186.42 out 188.00 in	7.3 5.7	2+48.4		2+64.8	#341		6504 R Maysville			8-27-56
3+0	193.8	188.23	5.6		3+25.0	3+49.3	#457		6504 Maysville			6-5-55
4+0	194.1	188.63	5.5		4+06.5	4+27.6		1285 #5777	6428 R Maysville		9-15-80	7-27-55
	194.8	188.95	5.9	4+84.6	4+72.8							
5+0	195.0	189.03	6.0		5+57.3	5+20.8	4" SDR 35	95-724-7	6420 R Maysville		1-20-95	
6+0	196.2	189.43	6.8		6+11.3	6+08.3	5629	96-12674-7 5586	6425 R Maysville	6412 R Maysville	11-20-57	8-5-94 7-14-55
7+0	197.2	189.83	7.4		7+10.3	7+07.3	9334		6307 Woodlawn		2-11-59	
	197.3	189.91	7.4	7+23.3								
LINE #8 0+0	192.6	186.78	5.9	0+00=23+08 in Line 3								
1+0	193.5	187.12	6.4		2+26.0	2+23.0	4" SCH 40	2001-00738 #21094	6519 R Maysville	see next pg 6504 R Maysville	4-3-01 7-15-86	5-29-56
2+0	193.9	187.52	6.4		3+14.8	3+11.8	4425	7586	6511 Maysville	6506 R Maysville	4-23-57	7-28-58
3+0	194.0	187.66	6.3	2+34.7	3+94.0	3+97.0	4424		6503 Maysville		4-23-57	
4+0	195.4	188.32	7.1		4+57.0	4+54.0	4424		6427 Maysville		5-11-55	
	196.1	188.59	7.5	4+68.0	5+35.0	5+32.0	44753		6417 Maysville		5-11-55	
5+0	196.6	188.72	7.9		6+26.0	6+23.0	44752	C24677	6406 E Maysville		6-2-71	
6+0	197.7	189.12	8.6		6+89.0	6+86.0	44751		6411 Maysville		5-11-55	
7+0	198.8	189.52	9.3	7+00.6								

#5767 Tap - 640 Maysville Lane - J. Hays Pkg. Co. - 7-27-55
 #5575 Tap - 6404 Maysville Lane - Reynolds Pkg. Co. - 7-14-55
 #5549 Tap - 6401 Maysville Lane - Reynolds Pkg. Co. - 7-14-55
 #5549 Tap - 6401 Maysville Lane - Reynolds Pkg. Co. - 12-20-55
 #71217 - 4 6 641 Tap - 6512 E. Maysville - Antioch Pkg. - 12-29-55
 #7122 - 6529 Tap - P. Muddock - Antioch Pkg. - 12-29-55
 #178 - Tap - 6520 Jacqueline - Nickell - 3-9-58
 C 72704 6420 E. Maysville - Repair - 7-3-79
 #3028 Tap - 6608 Maysville Lane - 11-13-56 - Reynolds
 5510 Tap - 905 St. James - Henning - 10-16-57
 5620 Tap - 6409 E. 8th - Henning - 11-7-57
 5565 Tap - 6504 E. 8th - Henning - 11-19-57
 6487 Tap - 6508 E. 8th - Reynolds - 4-7-58
 #306 Tap - 6410 6th - Phipps - 6-17-58

2001-00738- 4/3/01- 6519 JACQUELINE- A+T Pibg Co- 4" SCH 40- Tied back to Bldg SWR- ITWIN CO, 2 KICKOUTS, LV45