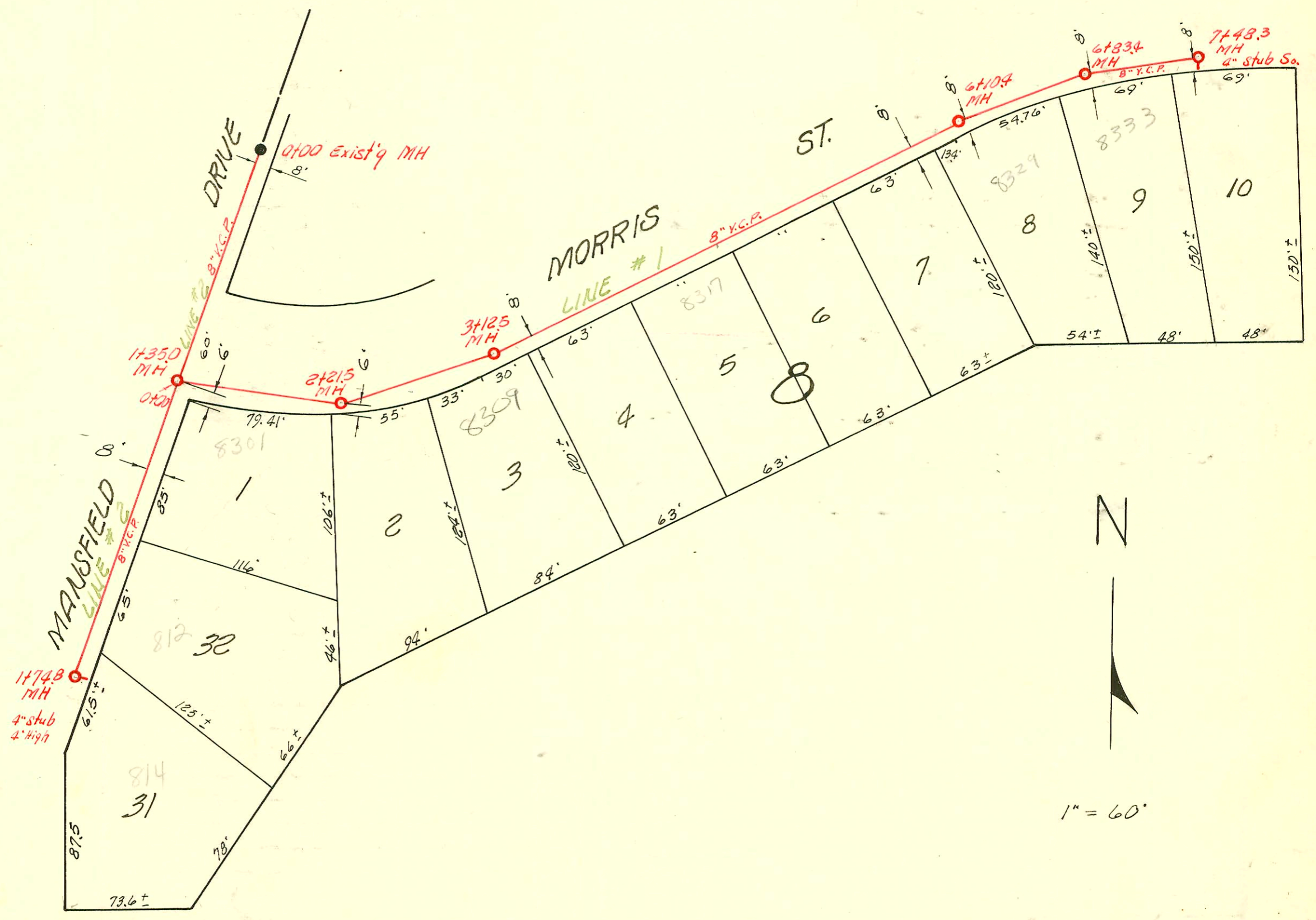


LAT. 10, SUB. 2 S. S. 22

W. B. CARTER CONST. CO., APRIL 19, 1955

BK. NO. K-24 , PROJ. NO. C25-20



LAT. 11, W. I. S.

BUILDERS CONST. INC., AUG 27, 1955

BK NO. K-31, PROJ. NO. C24-73

CONSTRUCTION RECORD							SERVICE RECORD					
STATION	ELEVATION		Depth	MANHOLE	4-INCH "Y" BRANCHES		No. of Permit		House Number		DATE OF PERMITS	
	Ground	Grade			North West	South East	North West	South East	North West	South East	North West	South East
0+0	93.1	87.80	5.3	0+00 EXIST'G MH								
1+0	93.6	88.20	5.4		0+61.5	0+64.5						
2+0	93.6	88.60	5.0		1+29.5 1+87.0	1+32.5 1+90.0		C49329	1208 W. 34th			5-1-75
3+0	93.9	89.00	4.9	2+98.5	2+68.0	2+71.0		12684	1202 W 34th			4-27-60
4+0	94.4	89.40	5.0		3+15.0 3+76.0 3+87.0 4+16.5	3+18.0 3+79.0 3+82.0 4+19.5		B116 #5900 15117	1200 W 34th			11-25-85
5+0	93.9	89.76 out 89.86 in	4.1 4.0	4+90.0	4+51.5 MH TAP	4+54.5		6054 #7210	3423 S Seneca 1129 W 33rd S			11-26-13 10-21-46 1-10-56 N Permit
	95.0	90.30	4.7	6+00		EAST 5+46.0 5+58.0						
SOUTH												
Line #1	0+0	136.0	132.30	3.7	0+00 EXIST'G MH							
	1+0	140.9	132.70	8.2								
	2+0	141.2	132.84 132.94	8.4 8.3	1+35.0							
	2+0	140.5	133.20	7.3		2+04.0		#6588	8301 E Morris			9-30-55
		140.6	133.30	7.3	2+21.5	2+61.7		#6589	8305 E Morris			9-30-55
	3+0	141.0	133.60	7.4		3+12.5						
		140.9	133.66	7.2		3+21.4 3+87.8		#6590 #6591	8309 R Morris	See Below		9-30-55 9-30-55
	4+0	141.8	134.00	7.8		4+47.0		#6592	8317 E Morris			9-28-92 9-30-55
	5+0	143.9	134.40	9.5		5+10.5 5+76.0		#6593 #6594	8321 Morris			9-30-55 9-30-55
	6+0	144.2	134.80	9.4		6+10.4						
		144.2	134.84	9.4	6+10.4	6+38.8		#6595	8327 E Morris			12-12-94 9-30-55
	7+0	144.5	135.14	9.4	6+83.4							
		144.5	135.20	9.3		7+11.0		#6596	8333 E Morris			9-30-55
		143.9	135.40	8.5	7+48.3 (4" Stub S)			#6597	8337 E Morris			9-30-55
EAST												
Line #2	0+0	141.2	132.94	8.3	0+00 = 1+35.0 in Line #1							
	1+0	141.6	133.34	8.3		1+42.4		#49112	812 R Manfield			4-18-76
		142.5	133.64	8.9	1+74.8 (4" Stub 4' high)				845 Manfield			

2001-00664-312701-8309 E Morris - CJ Pray - 4" SCH 40 - 17WINGO, 1V22, 1H22, 2H45, Fernco to clay 1' from main 9'E of MH 3+12.5 (3+21.5)
Fernco to 4' @ house

#5515 - tap - 344th - Seneca - NK - Donna Salina (TAP 4+80)
#25909 - 8/2 to 3417 S Seneca - NK - Donna Salina (TAP 4+80)