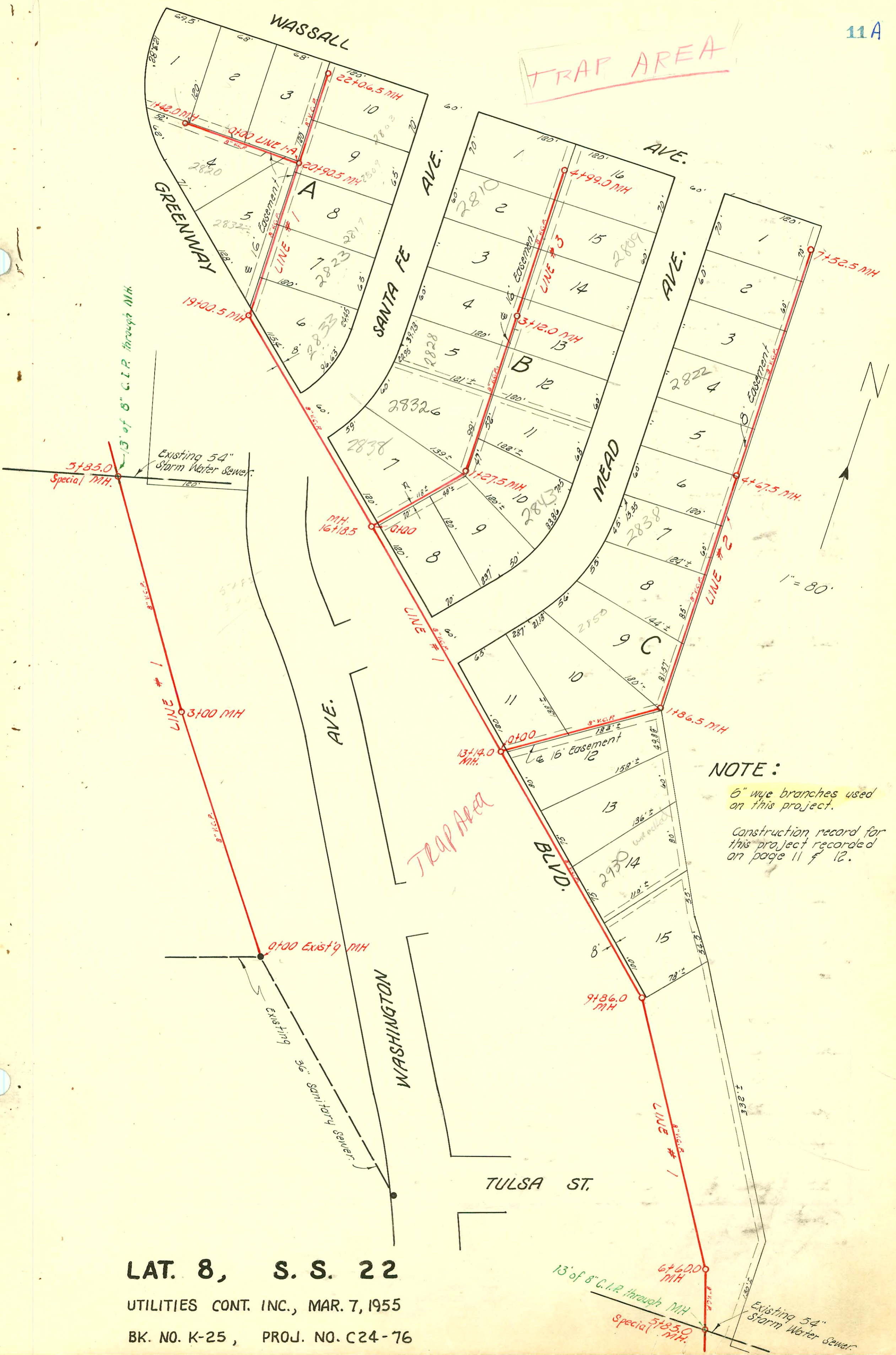


TRAP AREA



NOTE:
 6" wye branches used on this project.
 Construction record for this project recorded on page 11 & 12.

LAT. 8, S. S. 22
 UTILITIES CONT. INC., MAR. 7, 1955
 BK. NO. K-25, PROJ. NO. C24-76

CONSTRUCTION RECORD

SERVICE RECORD

STATION	ELEVATION		Depth	MANHOLE	6-INCH "Y" BRANCHES		No. of Permit		House Number		DATE OF PERMITS	
	Ground	Grade			North West	South East	North West	South East	North West	South East	North West	South East
0+0	92.9	83.68	9.2	3+00 Existing MH								
1+0	89.8	83.93	5.9									
2+0	91.9	84.68	7.2									
3+0	92.2	85.18 out 85.82 in	7.0 6.4	3+00								
4+0	91.5	85.92	5.6									
5+0	89.8	86.02	3.8									
	92.8	86.11	6.7	5+85.0								
6+0	94.1	86.12	8.0									
	93.8	86.18	7.6	6+60								
7+0	92.0	86.22	5.8									
8+0	92.1	86.32	5.8									
9+0	92.3	86.42	5.9									
	92.0	86.50	5.5	9+86.0								
10+0	92.4	86.52	5.9									
					10+35.0			#3781	2920 Greenway			3-8-55
11+0	92.4	86.62	5.8					#9-10738-7 #3780	2930 S/O Greenway	30' below		5-26-99 3-8-55
					11+80.0			#3789	2924 Greenway			3-8-55
12+0	92.3	86.72	5.6									
					12+56.0			#3788	2916 Greenway			3-8-55
13+0	91.7	86.82	4.9									
	92.3	86.83	5.5	13+14.0								
14+0	92.2	86.92	5.3									
15+0	92.7	87.02	5.7									
16+0	92.3	87.12	5.2									
	92.2	87.14	5.1	16+18.5								
17+0	91.9	87.22	4.7									
18+0	92.8	87.32	5.5									
					18+25.5			#9-3949-7 4686	2933 S/R Greenway			3-4-99 5-9-55
19+0	93.0	87.42 out 87.63 in	5.6 5.4	19+00.5	WEST	EAST						
					19+52.0			#4691	2932 Greenway			5-9-55
								#9-10738-7 #4677	2923 S/A Greenway			8-11-99 5-7-55
20+0	92.5	87.74	4.8									
								#4688	2917 S. Greenway			5-9-55
21+0	92.7	87.82	4.9	20+90.5								
								#4689	2907 S. Greenway			5-7-55
					21+25.0			#4693	617 Greenway			5-9-55
					21+54.5			#4690	21809 Greenway			11/01/88 5-9-55
22+0	94.3	87.94	6.4									
	94.3	87.94	6.4	22+06.5								
LINE 1-A	0+0	92.8	88.01	4.8	0+00 = 20+90.5 in Line #1	NORTH	SOUTH					
								#4692	2920 Greenway			5-9-55
								#4694	611 Greenway			5-9-55
1+0	93.4	88.11	5.3									
								#4695	603 Greenway			5-9-55
	93.7	88.15	5.6	1+42.0								
LINE # 2	0+0	92.4	87.04	5.3	0+00 = 13+14 in Line #2	WEST						
								#3786	2860 S. Greenway			3-8-55
								#3785	2824 Greenway			3-8-55
1+0	92.7	87.13	5.6									
	92.3	87.42 out 87.42 in	5.1 4.9	1+86.5								
2+0	92.8	87.43	5.4									
								#3784	2850 S. Greenway			3-8-55
								#3783	2845 Greenway			3-8-55
3+0	92.8	87.53	5.3									
								#9-15422-7 #3782	2838 S/B Greenway			7-28-95 3-8-55
4+0	95.7	87.63	8.1									
								#3781	2830 S. Greenway			3-8-55
	95.9	87.70	8.2	4+67.5								
								#3780	2828 S. Greenway			3-8-55
5+0	95.5	87.73	7.8									
								#3778	2822 S. Greenway			3-8-55
6+0	96.2	87.83	8.4									
								#3777	2816 S. Greenway			3-8-55
								#3776	2810 S. Greenway			3-8-55
7+0	95.4	87.93	7.5									
	95.6	87.98	7.6	7+52.5				#3775	2804 S. Greenway			11-21-88 3-8-55

NOTE: See Line #3 on page 12 2000-00433 211600 2930 5. Greenway Blvd - McCullough
 S/O 99-10738-7 6/26/99 2930 5 Greenway - McClung's 3/6 10.8' N of Curb + 26' w of EPL
 C 62902 (R) 2807 S. Greenway 9-7-55