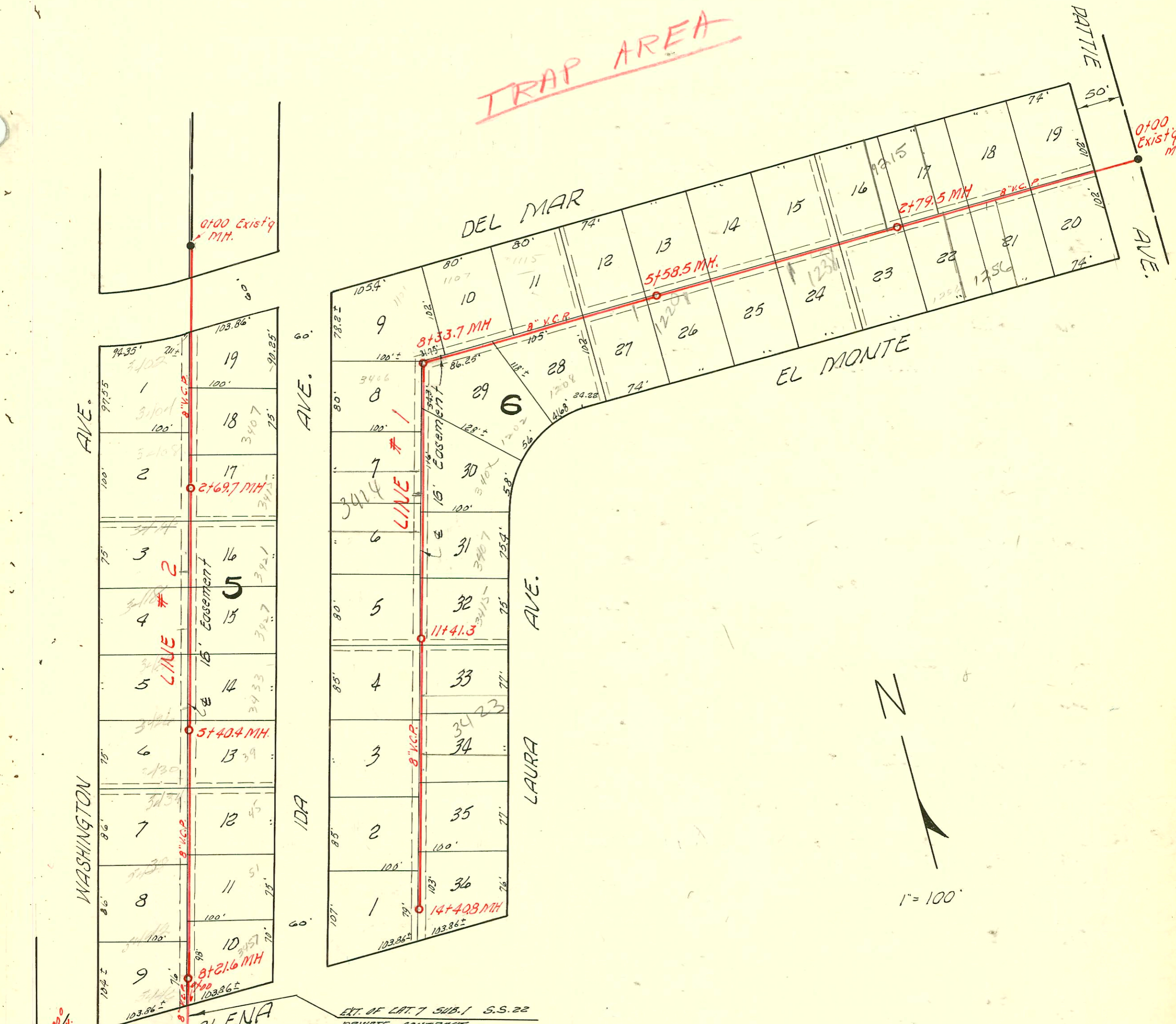


TRAP AREA



EXT. OF LAT. 7 SUB. 1 S.S. 22
PRIVATE CONTRACT
BK. NO. K-29 MAY 22 '59

NOTE:

This project has 6 inch "Y" branches.

STA.	GR.	GRADE	DEPTH	M.H.
0+00	94.9	86.00	8.9	Existing
0+80	94.5	86.16	8.3	0+80 8" dia 6" W.
1+00	94.5	86.80	7.7	
2+00	94.2	87.80	6.4	
	94.0	88.70	5.3	2+00 6" dia 6" W. #10548

SUR 1994-00234 S15 7-20-99 (0+80) top (35.6W) (415.6)
 277006 (3501 S Washington) Mike Bratcher 3-25-80 Mc. (35.6W) (415.6)
 SUR 1994-00235 S10 7-20-99
 SUR 2004-02154 8/11/04 3502 S Washington
 Brokered Pkg =

GALENA
 New Restroom Bldg for Garvey Park
 Community Garden
 2/18/03
 BSR

Res #29313 \$100.00 fee paid 5-22-59 y.m.c.a.-3501 S Washington

Need appraisal from sewer maint. Div to connect to MH 0+80 BK

LAT. 7, SUB-MAIN 1, S. S. 22

UTILITY CONT. INC. MARCH 14, 1955

BK. NO. K-24 PROJ. NO. C 24-32

