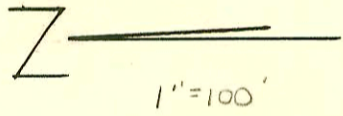
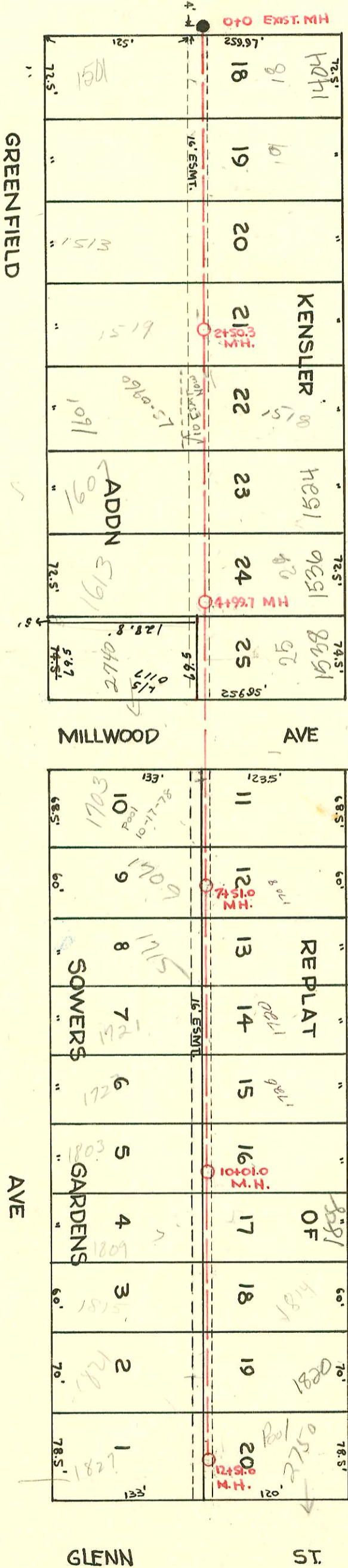


Elizabeth not open



LAT 6 SUB 2
 W.B. CARTER CONST. CO. INC.
 BK K-30

SS #22
 MAY 6, 1955
 PROJ. NO. C25-S

2000-01915-1524 W 27th St S - 212800- Roto Rooter - 4" SCH 40, TWIN CO. 4445

CONSTRUCTION RECORD

SERVICE RECORD

LINE #27 CONTINUED

LINE #28

LINE #29

Lat 6 Sub 2 SS#22

STATION	ELEVATION		Depth	MANHOLE	4-INCH "Y" BRANCHES		No. of Permit		House Number		DATE OF PERMITS			
	Ground	Grade			North West	South East	North West	South East	North West	South East	North West	South East	North West	South East
5+0	98.8	94.70	4.1		5+10.5	5+13.5	6691	7542	2421	2422	4-17-58	7-15-58		
	98.8	94.97	3.8	5+89.5	5+72.0	5+75.0		7547		2423		7-18-58		
0+0	98.6	94.50	4.1	0+00 = 13+78.9 in Line # 23	0+18.8	0+21.8	2550163	21657	2227	2227	9-20	10-12-58		
					0+83.0	0+86.0	#5027	H5034	2227	2227	6-2-55	6-2-55		
1+0	99.2	94.90	4.3				#10087	4049	2227	2227	7-21-80	7-1-81		
							#4149	H5033	2227	2227	4-15-44	6-2-55		
2+0	98.4	95.30	3.1		1+44.7	1+47.7	16680	27643	2227	2227	7-24-86	2-14-80		
							#4065	H5032	2227	2227	4-6-55	6-2-55		
	97.4	95.62	1.8	2+79.5	2+06.3	2+09.3	#4066	H5031	2227	2227	4-6-55	6-2-55		
					2+68.0	2+71.0	#76982	H5030	2227	2227	3-24-80	6-2-55		
					WEST	EAST								
0+0	96.1	89.80	6.3	0+00 Exist 9 MH	0+27.0	0+24.0	8195	H6313	2045	2045	10-1-58	7-12-55		
1+0	96.8	90.20	6.6		0+88.6	0+85.6	8471	H6314	3110	3110	10-30-58	9-12-55		
2+0	96.9	90.60	6.3	2+00.3	1+46.5	1+43.5	8472	H5609	3116	3115	10-30-58	7-14-55		
					2+10.0	2+07.0	H6322	5610	3122	3121	9-12-55	7-14-55		
					2+67.0	2+64.0	H6321	H5611	3128	3127	9-12-55	7-14-55		
3+0	96.8	91.00	5.8		3+27.5	3+24.5	H6320	H5612	3134	3133	9-12-55	7-14-55		
					3+85.7	3+82.7	H6319	H5613	3140	3139	9-12-55	7-14-55		
4+0	96.5	91.40	5.1	4+00.0	4+46.0	4+43.0	H6318	H5614	3146	3145	9-12-55	7-14-55		
5+0	96.5	91.80	4.7		5+07.0	5+04.0	H6317	H5615	3152	3151	9-12-55	7-14-55		
					5+68.0	5+65.0	H6316	H5616	3158	3157	9-12-55	7-14-55		
6+0	96.5	92.20	4.3		6+26.0	6+23.0	H6315	H5617	2146	2082	9-12-55	7-14-55		
	96.4	92.36	4.0	6+40.0					3159	3158				
0+0		90.60	7.41	Exist M.H.	North	SOUTH								
					+25.5	+50.0		9404	1426	2720		2-27-59		
					+99.0									
1+0	97.38	90.80	7.38		1+70.0	1+73.0		#310	1502			3-26-56		
2+0	98.1	91.00	7.18		2+36.5	2+39.5	4698	H311	1519	1510	6-18-57	3-26-56		
	98.0	91.10	6.92	2+50.3					1510					
3+0	98.0	91.20	6.89		3+30.0	3+33.0	986257	H3215	1601	1601	8-26-58	3-14-56		
					3+89.5	3+92.5	8181	H332	1607	1607	9-26-58	3-14-56		
4+0	97.9	91.40	6.48		4+70.0	4+73.0	14257	H338	1613	1613	6-5-61	2-12-57		
5+0	97.7	91.60	6.25	4+99.7					1613					
					5+40.0	5+43.0	H26797	H4889	2740	1538	8-25-71	5-23-55		
6+0	97.7	91.80	6.02		6+72.0	6+75.0		H4774	1702	1702		5-12-55		
7+0	97.5	92.00	5.67		7+33.5	7+36.5	H5238	H4775	1702	1702	6-20-55	5-12-55		
	97.6	92.10	5.65	7+51.0					1702					
					7+91.5	7+94.5	H5236	H4776	1702	1702	9-16-83	11-24-75		
8+0	98.6	92.20	6.79		8+56.0	8+59.0	H6167	H4777	1702	1702	6-20-55	5-12-55		
									1702					
9+0	98.4	92.40	5.97		9+12.0	9+15.0	H6768	H4778	1702	1702	10-24-55	5-12-55		
					9+72.5	9+75.5	6998	H4779	1702	1702	12-6-55	5-12-55		
10+0	98.7	92.60	6.12	10+01.0					1702					
					10+35.0	10+38.0	H6799	H4780	1809	1608	12-6-55	5-12-55		
11+0	97.9	92.80	5.20		11+01.5	11+04.5	H3505	H225	1815	1814	4-25-66	5-6-64		
					11+59.5	11+62.5	H1161	H1486	1821	1820	4-27-64	4-13-64		
12+0	98.0	93.00	5.13		12+33.0	12+36.0	H5972	H63717	1827	3750	7-8-66	6-26-67		
	97.9	93.10	5.01	12+51.0					1827					

97-974-7 5-20-57 2215 W 27th - Padged

C52572-1714 W 27th St - 11-24-75 - Tap (7484.7)
C26797-2740 S Millwood - 8-25-71 - Tap (5449.7)

Jan #127-1588 West 27th Street (South) - Art Prosser - 4" Tap - 5/9/56

Tap #3100 - 1513 Greenfield Co. Bldg 11-20-56
5025 - Tap 1507 Kennedy 3-28-59
6090 Tap 2427 Greber RK Key Bldg 4-17-58 (15' E of MH 5+89.5)
48490 Tap - 1501 Greenfield - 11-5-58 Whippo Bldg 0+07
10377 Tap 1703 Greenfield Building 5-18-59 6+53