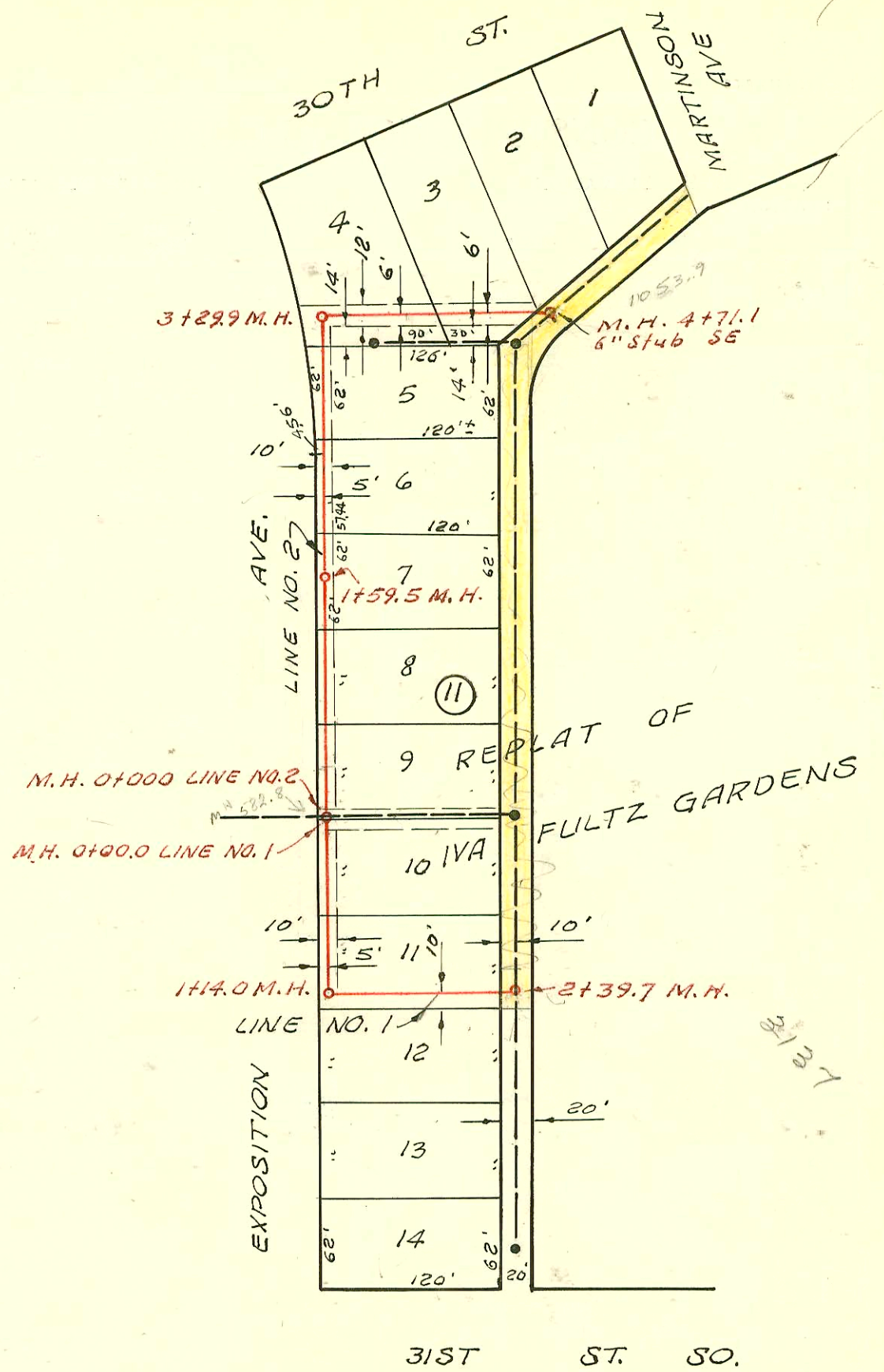


1"=100'

RELOCATION OF A PART OF  
 LAT. 5, SUB. 2, S. S. NO. 22  
 W. B. CARTER CONST. CO. INC  
 PRIVATE CONTRACT, BK. U.K #5  
 NOV. 14, 1968



| STATION    | ELEVATION |                       |            | MANHOLE                                  | 4" Y BRANCHES                 |  |
|------------|-----------|-----------------------|------------|--|-------------------------------|--|
|            | GROUND    | GRADE                 | DEPTH      |  | NORTH WEST                    | SOUTH EAST   |
| LINE NO. 1 |           |                       |            |  |                               |  |
| 0+00       | 95.4      | 89.86                 | 5.5        | 0+00.0 New M.H.                          |                               | 0+56.5 15311 - 3137 S Seneca #1 - 12-20-85   |
| 1+00       | 95.7      | 90.16                 | 5.5        |  |                               |  |
|            | 95.9      | 90.20 out<br>90.30 in | 5.7        | 1+14.0                                   | 1+33.0                        | 15310 3137 S Seneca 12-20-85   |
| 2+00       | 95.8      | 90.56                 | 5.2        |  | 6" on 8" 2+07.0               |  |
|            | 95.2      | 90.68                 | 4.5        | 2+39.7                                   | 15417<br>C14639<br>15418      | add to<br>MCDONALD<br>3153 S Seneca 6-24-69 Hoover Ditching<br>3153 S Seneca 1-7-86 Brake  |
| LINE NO. 2 |           |                       |            |  |                               |  |
| 0+00       | 95.4      | 89.33                 | 6.1        | 0+00.0 Line No. 2 =<br>0+00.0 Line No. 1 | TAP 0+35.5<br>0+30.0          | 15416<br>C14977-3149 S Seneca (TAP Y) 1-7-86 Brake<br>7-18-69 Hoover Ditching  |
| 1+00       | 95.5      | 89.59                 | 5.9        |  | 4" on 8" 1+08.5               | C16608-3145 S Seneca - 11-5-69 Hoover Ditching   |
|            | 95.5      | 89.73                 | 5.8        | 1+59.5                                   | Mill-top<br>Mill-top          | C16629-3145 S Seneca 11-5-69 Hoover Ditching   |
| 2+00       | 95.5      | 89.84                 | 5.7        |  |                               |  |
| 3+00       | 95.6      | 90.08                 | 5.6        |  |                               |  |
|            | 95.8      | 90.15 out<br>90.25 in | 5.6<br>5.5 | 3+29.9                                   |                               |  |
| 4+00       | 95.8      | 90.44                 | 5.4        |  |                               |  |
|            | 96.0      | 90.66                 | 5.3        | 4+71.1                                   | 6" on 8" 4+44.0<br>6" stub SE | C16610-3145 S Seneca - 11-5-69 Hoover Ditching<br>C10807 3123 S Seneca 10-4-68<br>Rex Robertson P169,<br>4+71.1 Mill-top C16964-3145 S Seneca - 11-19-69 Hoover Ditching |

CONSTRUCTION RECORD

SERVICE RECORD

| STATION         | ELEVATION |                                    | Depth             | MANHOLE  | 4-INCH "Y" BRANCHES |            | No. of Permit |            | House Number |            | DATE OF PERMITS         |            |
|-----------------|-----------|------------------------------------|-------------------|--|---------------------|------------|---------------|------------|--------------|------------|-------------------------|------------|
|                 | Ground    | Grade                              |                   |  | North West          | South East | North West    | South East | North West   | South East | North West              | South East |
|                 |           |                                    |                   |  |                     |            |               |            |              |            |                         |            |
| LINE # 5<br>0+0 | 95.8      | 90.50                              | 5.3               | 0+00 = 4+01.8<br>in line #1                    | 0+15.0              | 0+12.0     | #6205         | #6210      | 31269        | 3133A      | 8-21-55                 | 8-21-55    |
| 1+0             | 95.9      | 90.90                              | 5.0               |  | 0+69.0              | 0+66.0     | #4185         | #4181      | 31270        | 31271      | 4-11-55                 | 4-11-55    |
| 2+0             | 95.7      | 91.30                              | 4.4               |  | 1+32.5              | 1+29.5     | #6132         | #6128      | 31149        | 31218      | 8-24-55                 | 8-24-55    |
| 3+0             | 95.6      | 91.70                              | 3.9               |  | 1+95.0              | 1+92.0     | #4186         | #6129      | 31085        | 31152      | 4-11-55                 |            |
|                 | 95.6      | 91.78                              | 3.8               | 7204<br>3+19.0                                 | 2+58.0              | 2+55.0     | #6131         |            | 31022        |            | 8-24-55                 |            |
| LINE #6<br>0+0  | 95.2      | 90.40                              | 4.8               | 0+00 = 7+08.5<br>in line #1<br><br>(ABANDONED) | 0+23.0              | 0+20.0     |               | #5963      |              | 31533      |                         | 8-9-55     |
| 1+0             | 95.2      | 90.80                              | 4.4               |  | 0+90.0              | 0+87.0     |               |            |              |            |                         |            |
| 2+0             | 95.1      | 91.20                              | 3.9               |  | 1+46.0              | 1+43.0     | #6097         |            | 31524-56     |            | 6-3-55                  |            |
|                 | 95.0      | 91.52                              | 3.5               | 2+81.5   | 2+09.0              | 2+06.0     | #5078         |            | 31576-45     |            | 6-3-55                  |            |
|                 |           |                                    |                   |  | 2+72.0              | 2+69.0     | #5099         |            | 1234 31-59   |            | 6-3-55                  |            |
| LINE #7<br>0+0  | 95.6      | 86.80                              | 8.8               | 0+00<br>EXIST'G MH.                            | NORTH<br>0+45.6     | SOUTH      | #4781         |            | 1427         |            | 5-12-55                 | 4-13-52    |
| 1+0             | 95.8      | 87.00                              | 8.8               |  | 0+56.0              |            | C 3158        |            | 1434-50      |            | 5-9-55                  |            |
|                 |           |                                    |                   |  | 0+67.0              |            | C 31583       |            | 1438 W       |            | 4-17-72                 |            |
|                 |           |                                    |                   |  | 1+04.0              |            | #2390         |            | 1435         |            | 9-19-81                 |            |
| 2+0             | 96.0      | 87.20                              | 8.8               |  | 1+67.0              | 1+70.0     | #4373         | #4672      | 1415         |            | 4-21-55                 | 5-9-55     |
|                 | 96.0      | 87.28 out<br>87.38 in              | 8.7<br>8.6        | 2+40.0   | 2+21.0              |            | #23339        | #4673      | 1416         |            | 2-3-91-55               |            |
|                 |           |                                    |                   |  | 2+51.0              |            | #4374         |            | 1417         |            | 4-21-55                 |            |
| 3+0             | 95.9      | 87.50                              | 8.4               |  | 2+85.5              |            | #4674         |            | 1410W        |            | 5-9-55                  |            |
|                 |           |                                    |                   |  | 3+23.0              |            | #4675         |            | 1404 W       |            | 5-9-55                  |            |
|                 |           |                                    |                   |  | 3+37.0              |            | #4375         |            | 1403         |            | 4-21-55                 |            |
|                 |           |                                    |                   |  | 3+81.0              | 3+84.0     | #4376         | #4676      | 1329         |            | 4-21-55                 | 5-9-55     |
| 4+0             | 95.8      | 87.71 out<br>87.81 in              | 8.1<br>8.0        | 4+06.5   | 4+40.0              | 4+43.0     | #4377         | #4677      | 1327         |            | 4-21-55                 | 5-9-55     |
| 5+0             | 96.0      | 88.00                              | 8.0               |  | 5+02.0              |            | #4678         |            | 1323W        |            | 5-9-55                  |            |
|                 |           |                                    |                   |  | 5+26.0              |            | #4378         |            | 1321         |            | 4-21-55                 |            |
|                 |           |                                    |                   |  | 5+89.4              |            | NC 2001-00509 |            | 1316         |            | 17WVW CO,<br>2H22, 1V46 | 3-5-81-01  |
|                 |           |                                    |                   |  | 5+88.0              |            | #4379         |            | 1315         |            | main 4 1320W            | 8-13-52    |
| 6+0             | 96.0      | 88.20                              | 7.8               |  | 6+40.0              |            | #1959         |            | 1310         |            | 8-13-52                 |            |
|                 |           |                                    |                   |  | 6+49.0              |            | #4380         |            | 1309         |            | 4-21-55                 |            |
|                 |           |                                    |                   |  | 6+88.0              |            | #1958         |            | 1304         |            | 8-13-52                 |            |
| 7+0             | 96.0      | 88.40                              | 7.6               | 7+01.0   | 7+15.0              |            | #4381         |            | 1303         |            | 4-21-55                 |            |
| 8+0             | 96.8      | 88.60                              | 8.2               |  | 8+20.5              | 8+23.5     | #1950         | #1957      | 1221         |            | 10-14-83                |            |
|                 |           |                                    |                   |  | 8+83.5              |            | #1956         |            | 1220         |            | 8-13-52                 | 8-13-52    |
|                 |           |                                    |                   |  | 8+89.5              |            | #1949         |            | 1215         |            | 8-13-52                 | 8-13-52    |
| 9+0             | 96.3      | 88.80 out<br>88.84 out<br>88.94 in | 7.5<br>7.5<br>7.4 | 9+21.5   | 9+43.0              |            | #1948         |            | 1209         |            | 8-13-52                 |            |
|                 |           |                                    |                   |  | 9+55.0              |            | #1955         |            | 1204         |            | 8-13-52                 | 8-13-52    |
| 10+0            | 95.8      | 89.10                              | 6.7               |  | 10+05.0             | 10+29.0    | #2001-00890   |            | 1203 R       |            | 4-12-01                 |            |
|                 |           |                                    |                   |  | 10+67.0             |            | #1947         |            | 1180         |            | 8-13-52                 | 8-13-52    |
|                 |           |                                    |                   |  | 10+78.0             |            | #1946         |            | 1181         |            | 8-13-52                 |            |
| 11+0            | 96.0      | 89.30 out<br>89.40 in              | 6.7<br>6.6        | 11+00  | 11+09.0             |            | #1945         |            | 1116         |            | 8-13-52                 | 8-13-52    |
|                 |           |                                    |                   |  | 11+27.0             |            | #1952         |            | 1115         |            | 8-13-52                 | 8-13-52    |
|                 |           |                                    |                   |  | 11+78.0             |            | #1952         |            | 1110         |            | 8-13-52                 | 8-13-52    |
| 12+0            | 95.9      | 89.60                              | 6.3               |  | 12+43.0             | 12+46.0    | #1944         |            | 1103         |            | 8-13-52                 |            |
|                 | 95.6      | 89.72                              | 5.9               | 12+63.0  |                     |            | #1951         |            | 1103         |            | 6-26-56                 | 8-13-52    |

# 4382 - top 1421 Marlboro - 4-21-55 - Nichol & Kenney  
# 6130 - top 3109 S. Exposition - 8-24-55 - Nichol & Kenney

NOTE:

This project continues on page 27.

# 47348 - top 3120 S. Elizabeth - 1-23-57